

DEUTZ-ALLIS

7085/7110/7120/7145

AIR-COOLED
DIESEL
TRACTORS



DEUTZ
ALLIS



Four handsome new middleweight champs ready to work for you.

Meet the new 7100 Series from Deutz-Allis: topped by the 7145 at 144 PTO hp, and including the 7120 at 122 PTO hp, the 7110 at 110 PTO hp, and the 7085 with 85 PTO hp. Every one is designed to help you get more work done every hour you use it... and to make things a little easier for you.

Climb aboard the roomy MasterCab and you'll soon realize how much comfort, convenience and efficiency has been designed in. The angled steps help you up to the extra-wide door. The seat feels like it was made for you no matter what your size. It's fully adjustable, and it swivels for ease in getting in and out.

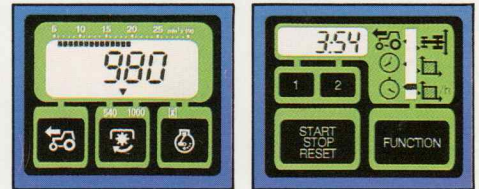
Now check the visibility. There's glass everywhere, practically nothing to block your line of sight. And all controls are right where they should be, easy to reach and use.

You can even have new Agrotronic

electronic instrumentation. The most technologically advanced tractor monitoring system there is, the Agrotronic monitor lets you accurately track operating functions you've only guessed at till now. The basic system provides a constant display of engine rpms, and lets you call up PTO and ground speed at a finger's touch. So you get full control of implements, and fine tuning of planter rates, fertilizer and chemical application.

An even more sophisticated system, the Agrotronic II monitor, combines an on-board computer and Doppler radar to give you data on true ground speed, wheel slip, acres per hour and total acreage—all the facts you need for profitable farming.

Fatigue isn't likely to be a problem in the MasterCab. The high-capacity heating and air-conditioning system keeps you comfortable in all weather



Top: Operator has clear view of all instrumentation.

Center: Choose new Agrotronic electronic readouts (left) or computerized Agrotronic II monitor (right).

Bottom: Adjustable deluxe swivel seat with heavy-duty suspension (air suspension on 7145) is standard.

conditions. The cab is isolated from the tractor frame by rubber mounts, and insulated to keep out dust and noise. Outside, halogen flood lights front and rear let you stretch working hours when you have to. There's even a remote electric outlet in the cab—and accent stripes for an added touch of class!

The smart good looks of the new 7100 Series tractors are a direct result of the principle that "form follows function"...they look great because that's how they're designed to perform! The crisp, clean lines also put routine service and maintenance points where they're easy to reach...hard to neglect.

Rugged mechanical transmissions let you control the power.

As the table shows, the new 7100 Series tractors give you plenty of speeds to choose from. Many are in the frequently-used working range under 6.5 mph. End speed of each gear lies within the working range of the next gear to give you the speed and efficiency you want, whatever the job. Synchronized shifting assures smooth, "on the go" gear changes.

Powermatic high-low power shifting is standard on the 7120 and 7145 models. It lets you decrease ground speed by 20%—increasing power by 26%—under load, at the touch of a button.

Quiet, efficient, easy shifting, these transmissions are designed and built of tough alloys to take years of hard use. Precision-manufactured helical gears mesh surely and silently year after year.

On the 7120 and 7145, you can engage or disengage the rear axle differential lock on the go, by means of an electrohydraulic control.

And new bar-type rear axles on the new 7110 and 7120 tractors provide a variety of wheel tread settings from 61.5" to 99" with 18.4 tires. An optional long axle permits the use of dual wheels or wider treads.

Model	Speeds forward		Reverse
	Std.	Opt.	
		(Creeper)	
7085	15	20	5
7110	15	20	5
7120	24	32	8
7145	36	(Std.)	12

Super-efficient All-Wheel Drive

More work per gallon, outstanding maneuverability, and power to get through tough spots are just some of the advantages of the mechanical All-Wheel Drive available on the new 7100 Series. And with Optitrac front axle differential lock to eliminate front-wheel spin,

you've got the best system around for really difficult terrain.

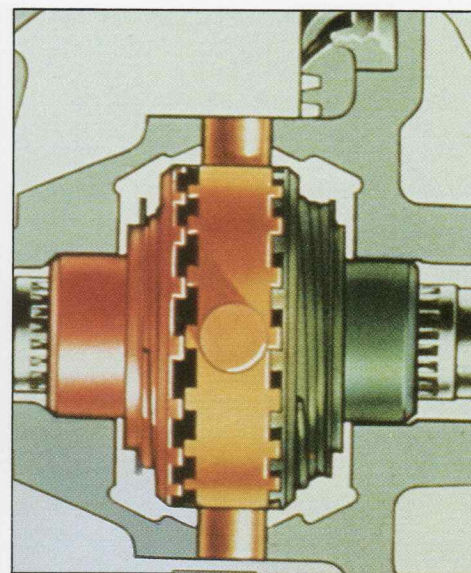
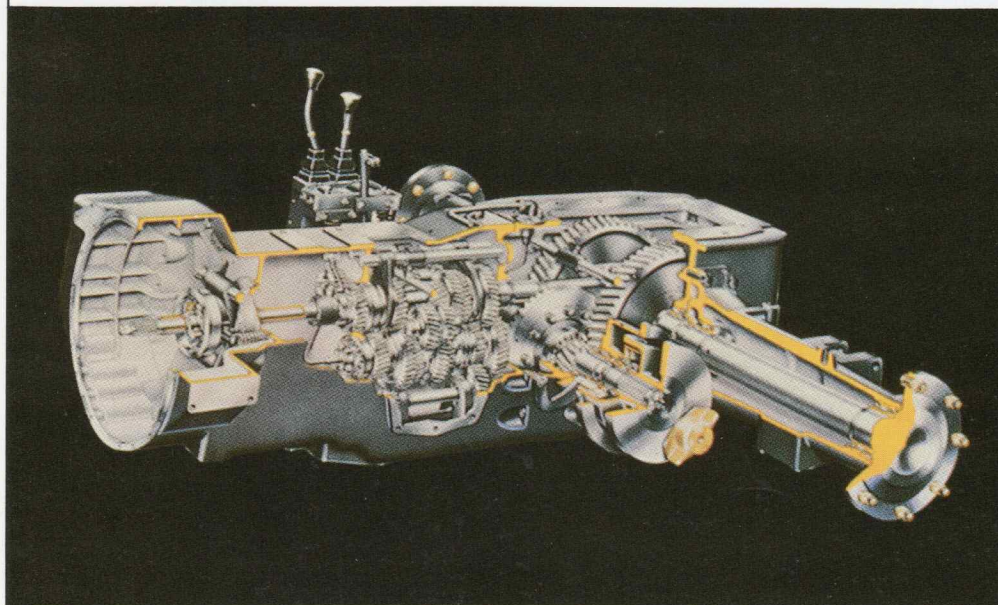
Other AWD engineering advances include planetary final drive, dual U-joints, permanent maintenance-free lubrication and much more...all adding up to performance and long life that sets this system apart.

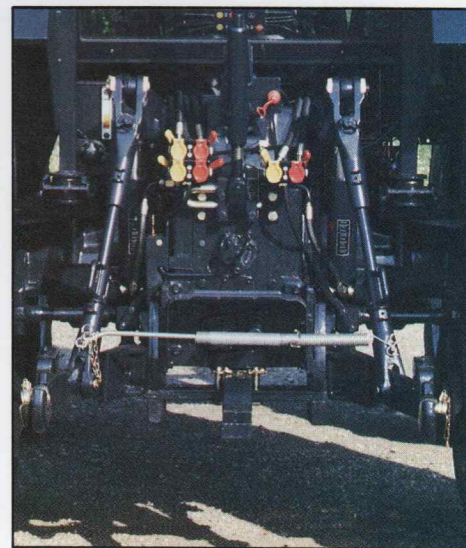
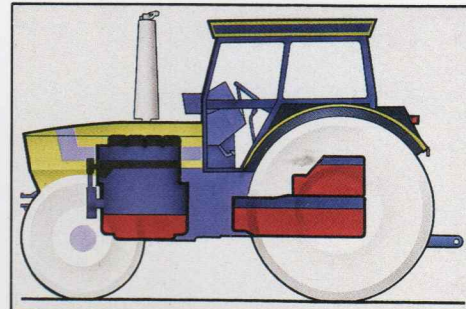
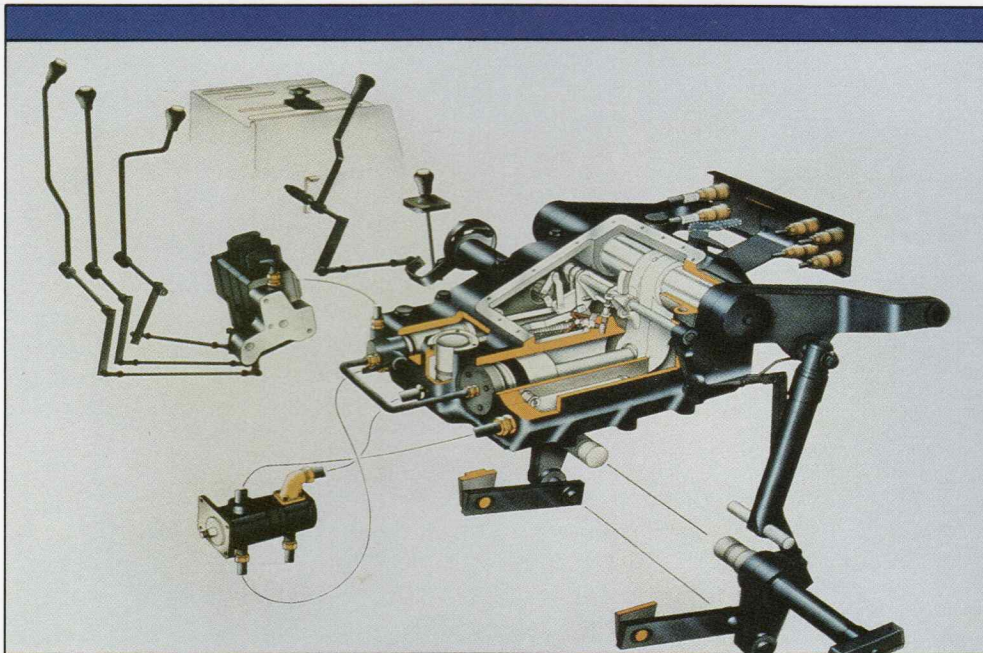


Top: All-Wheel Drive improves fuel efficiency and traction; bar-type axle provides variety of tread widths.

Lower Right: Optitrac automatic self-locking front-axle differential maximizes all-wheel traction.

Lower Left: Brawny mechanical transmissions offer wide choice of speeds.





Sophisticated hydraulics: all the performance and capacity you need.

The open-center Transfermatic hydraulic system on the new 7100 Series provides all the lifting power and quick response you need. Tandem direct-drive gear type pumps are at the heart of the system, and a single-lever position/draft control makes operation easy. Separate reservoirs for engine oil, transmission fluid and hydraulics prevent cross-contamination, yet simplify inventory since the same oil is used for all. Advanced-design remote couplers make hookup easy even under pressure, for rear hitching convenience. New test ports have been added to the system, along with a new low-back-pressure coupler designed for hydraulic motors.

Dual speed PTOs are offered on all tractors in this series, running at 540 and 1000 rpm. On the 7145 speeds are changed by a reversible stub shaft; the other three tractors have adjacent dual shafts.

Unique Twin-Power multiplies productivity.

This increasingly popular Deutz-Allis option on the new 7100 Series lets you have a business end at both ends

of your tractor. With a 3-point hitch and PTO up front and another at the rear, you've got working efficiency you've never had before. You can do many jobs with one tractor that otherwise would require two machines, two operators and/or two passes.

But that's not all. Implements up front are much easier to see and guide. So you can work faster, more precisely and with less effort.

Twin-Power is a factory-designed option. When it's installed in the field, rigid side rails are added to support the extra load.

Top Left: Open-center Transfermatic hydraulics provide big power, fast response.

Top Right: Separate reservoirs help keep fluids clean.

Center: New remote couplers make rear hitching easy, convenient.

Bottom: Twin-Power output lets you work at both ends of tractor.



Deutz Diesel Engines: direct air cooling sets them apart.

Fuel efficiency, easy starting, low maintenance costs and years of reliable trouble-free performance... all these attributes and more are built into the world-famous Deutz engines that power the new 7100 Series. The 7085 is powered by a 4-cylinder air-cooled diesel, and the others have 6-cylinder versions. The 7110 is naturally aspirated, while the 7085, 7120 and 7145 are turbocharged for improved economy, power and torque.

These engines have earned a solid reputation with farmers across North America for the way they save on fuel and overall costs, and for their day in, day out reliability.

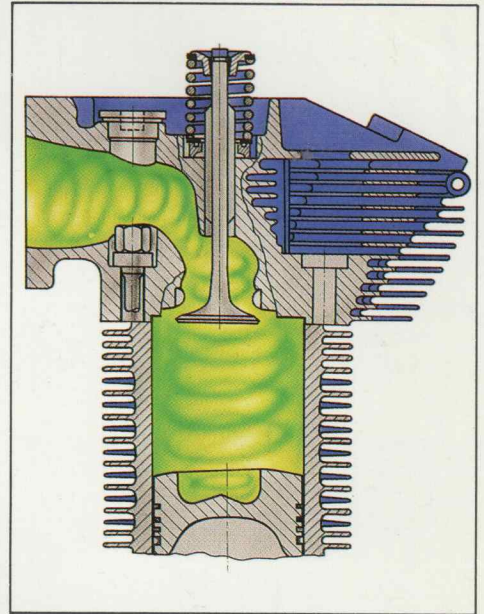
Direct air cooling is one reason: you won't find any radiators, water pumps, hoses or hose clamps to cause problems. All cooling is done by a powerful blower that supplies plenty of air around each individual cylinder and head. Instead of using air to cool liquid which has absorbed engine heat, these engines are cooled directly by air, a far more efficient method. An added refinement, a unique Econocool fluid coupling in the fan hub, varies

fan speed to match cooling needs, resulting in significant additional fuel savings... as much as 6 to 8% in typical operations.

Fuel efficiency is the goal of several Deutz design advantages. Aerodynamic intake ports impart a swirling motion to incoming air, so it mixes thoroughly with fuel in the combustion chamber. Fuel is injected through 4-hole nozzles which atomize it to promote mixing and complete combustion.

Engineering and manufacturing of these engines are both so precise that no gaskets are required for the cylinder heads. Before shipping, every Deutz engine is rigorously tested under extreme conditions. Then it is derated for tractor use. So there's always power in reserve, to help handle tough jobs and last for years.

In all aspects, these engines make use of fewer parts and simple, straight-forward design principles to make servicing easy, maintenance fast, reliability high and working life extra-long.

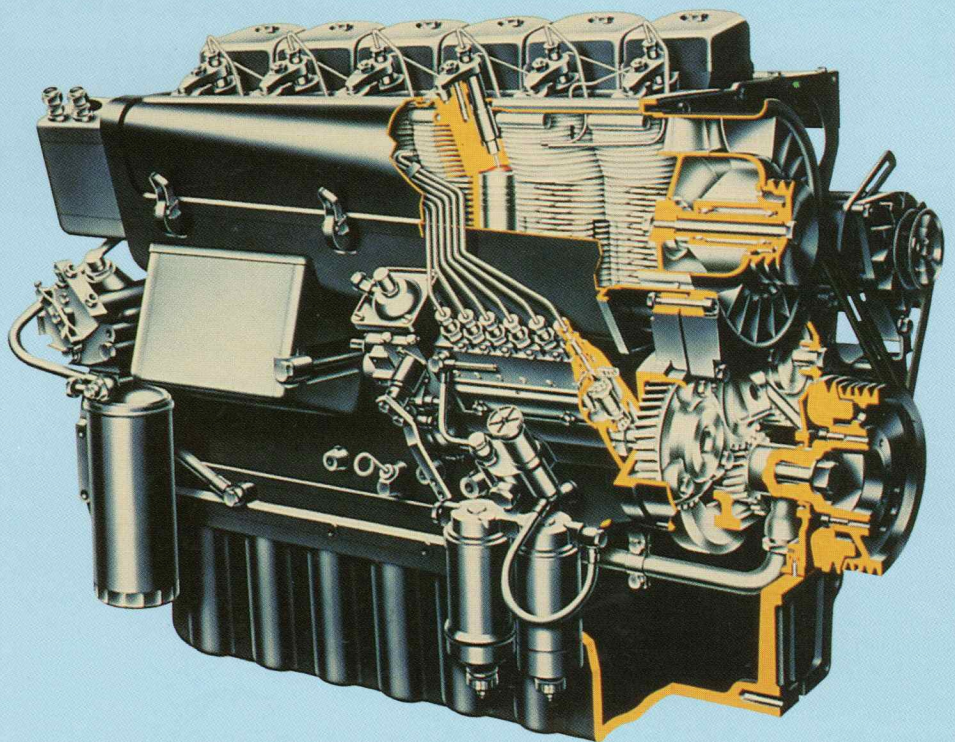
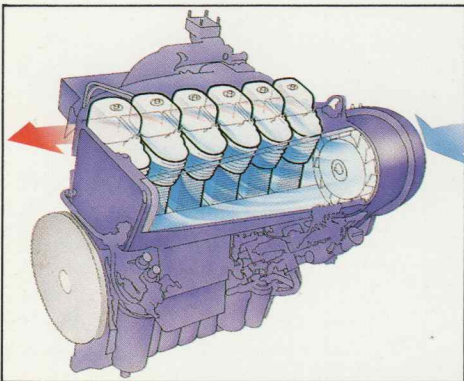
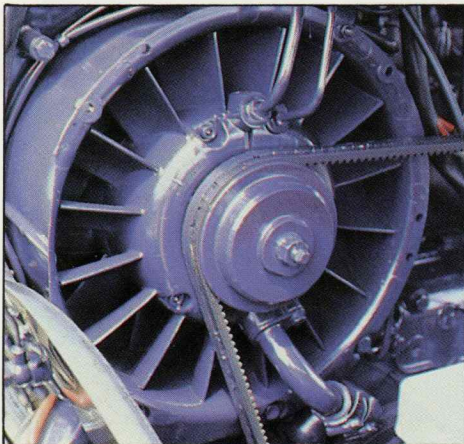


Top: Incoming air is swirled to mix thoroughly with fuel to promote complete combustion.

Center Left: Unique fluid coupling in fan hub varies fan speed to match cooling needs, and save fuel.

Lower Left: Huge volume of air flows past finned cylinders for efficient cooling.

Lower Right: Cutaway shows simplicity of design that contributes to reliability and long life.



SPECIFICATIONS

	7085 2WD & AWD		7110** 2WD & AWD		7120 2WD & AWD		7145 2WD & AWD	
Horsepower, pto*	85 (65.15 kw)		110 (82.03 kw)		122 (90.98 kw)		144.5 (107.75 kw)	
Engine	Deutz direct air-cooled diesel		Deutz direct air-cooled diesel		Deutz direct air-cooled diesel		Deutz direct air-cooled diesel	
Model	BF4L913		F6L913		BF6L913		BF6L913	
Cylinders	4 (turbocharged)		6		6 (turbocharged)		6 (turbocharged)	
Displacement	249 cu in (4085 ccm)		374 cu in (6128 cm)		374 cu in (6128 ccm)		374 cu in (6128 ccm)	
Rated speed	2300 rpm		2400 rpm		2300 rpm		2400 rpm	
Clutch	Cerametallic, dry-disc; servo-activated		Cerametallic, dry-disc; servo-activated		Cerametallic, dry-disc; servo-activated		Cerametallic, dual dry-disc; servo-activated	
Transmission	Triple-range		Triple-range		Triple-range, POWERMATIC™		Triple-range, POWERMATIC	
Speeds	15 forward, 5 reverse		15 forward, 5 reverse		24 forward, 8 reverse		36 forward, 12 reverse	
Optional speeds	20 forward, 5 reverse		20 forward, 5 reverse		32 forward, 8 reverse		—	
Gear synchronization	All gears, all ranges		All gears, all ranges		All gears, all ranges		All gears, all ranges (except H/L)	
Speed range	1.4 to 17.7 mph (2.4 to 30.0 kmh)		1.5 to 18.6 mph (2.4 to 30.0 kmh)		1.5 to 18.6 mph (2.4 to 30.0 kmh)		2 to 18.6 mph (3 to 30.0 kmh)	
Optional speed range	.3 to 17.7 mph (.4 to 30.0 kmh)		.3 to 18.6 mph (.5 to 30.0 kmh)		.3 to 18.6 mph (.4 to 30.0 kmh)		—	
Differential lock, front	OPTITRAC,® automatic		OPTITRAC, automatic		OPTITRAC, automatic		OPTITRAC, automatic	
Differential lock, rear	Foot-operated		Foot-operated		Pushbutton		Pushbutton	
Brakes	Externally-mounted		Externally-mounted		Externally-mounted		Integral	
Service	Hydraulic, double-caliper, dry-disc		Hydraulic, double-caliper, dry-disc		Hydraulic, double-caliper, enclosed dry-disc		Hydraulic, integral wet-disc	
Parking	Independent; drum, mechanically-actuated		Independent; drum, mechanically-actuated		Independent; disc, mechanically-actuated		Independent, full-disc, mechanically-actuated	
Power-take-off	Independent; fixed shafts, 540 rpm/1000 rpm		Independent; fixed shafts, 540 rpm/1000 rpm		Independent; fixed shafts, 540 rpm/1000 rpm		Independent; dual speed, 540 rpm/1000 rpm	
Shaft	1 3/8 in; 6-spline 540 rpm, 21-spline 1000 rpm		1 3/8 in; 6-spline 540 rpm, 21-spline 1000 rpm		1 3/8 in; 6-spline 540 rpm, 21-spline 1000 rpm		1 3/8 in; 6-spline 540 rpm, 21-spline 1000 rpm; reversible stub shaft	
Speed, at engine speed	540 rpm @ 2025 rpm; 1000 rpm @ 2110 rpm		540 rpm/1000 rpm @ 2200 rpm		540 rpm @ 2192 rpm; 1000 rpm @ 2214 rpm		540 rpm/1000 rpm @ 1920 rpm	
Hydraulic system	Deutz TRANSFERMATIC™; open-center		Deutz TRANSFERMATIC; open-center		Deutz TRANSFERMATIC; open-center		Deutz TRANSFERMATIC; open-center	
Pumps	Tandem, engine-mounted		Tandem, engine-mounted		Tandem, engine-mounted		Dual, engine- and transmission-mounted	
Flow/pressure	19.6 gpm/2538 psi (74.0 lpm/175 bar)		24.0 gpm/2538 psi (94.0 lpm/175 bar)		24.0 gpm/2538 psi (91.0 lpm/175 bar)		27.3 gpm/2538 psi (103.5 lpm/175 bar)	
Remote valves	1-2-3 double- or single-acting		1-2-3 double- or single-acting		1-2-3 double- or single-acting		1-2-3 double- or single-acting	
Couplers	Lever-style, zero pressure, ISO		Lever-style, zero pressure, ISO		Lever-style, zero pressure, ISO		Lever-style, zero pressure, ISO	
Three-point hitch	Cat II, with linkage stabilizers		Cat II, with linkage stabilizers		Cat III, with linkage stabilizers		Cat III, with linkage stabilizers	
Steering	Hydrostatic power steering		Hydrostatic power steering		Hydrostatic power steering		Hydrostatic power steering	
Capacities								
Fuel tank	31 US gal (120 lit)		31 US gal (120)		40 US gal (150 lit)		66 US gal (250 lit)	
With optional fuel tank	—		58 US gal (220 lit)		66 US gal (250 lit)		—	
Engine crankcase	12 US qt (11 lit)		16 US qt (15 lit)		17 US qt (16 lit)		17 US qt (16 lit)	
Transmission	9.8 US gal (38 lit)		13 US gal (48 lit)		14 US gal (53 lit)		20 US gal (75 lit)	
Hydraulic system	3.3 US gal (13 lit)		3.5 US gal (13 lit)		4 US gal (15 lit)		4 US gal (15 lit)	
With optional hydraulics	9.8 US gal (38 lit)		10 US gal (38 lit)		10 US gal (38 lit)		10 US gal (38 lit)	
Tires	2WD	AWD	2WD	AWD	2WD	AWD	2WD	AWD
Front	10.10 x 16 (F2)	13.6 x 24	11.10 x 16 (F1)	14.9 x 28	11.00 x 16 (F2)	14.9 x 28	11.00 x 16 (F1)	16.9 x 28
Optional front	7.5 x 20 (F2) ¹	13.6 x 28 ³	—	—	—	16.9 x 28	—	14.9 x 28
Rear	18.4 x 34 (R1)	18.4 x 34	18.4 x 38 (R1)	18.4 x 38	18.4 x 38 (R1)	18.4 x 38	20.8 x 38 (R1)	20.8 x 38
Optional rear	16.9 x 38 (R1) ²	18.4 x 38 ⁴	16.9 x 38 (R1)	—	20.8 x 38 (R1)	20.8 x 38	—	18.4 x 38
Bare operating weight	8466 lb (3840 kg)	9193 lb (4170 kg)	9700 lb (4400 kg)	10670 lb (4840 kg)	11243 lb (5100 kg)	12081 lb (5480 kg)	11905 lb (5400 kg)	12987 lb (5950 kg)
Dimensions								
Wheelbase	92.0 in (2333 mm)	94.5 in (2400 mm)	105.8 in (2688 mm)	106.4 in (2703 mm)	105.8 in (2688 mm)	106.4 in (2703 mm)	103.5 in (2630 mm)	111.3 in (2826 mm)
Minimum tread width	59.0 in (1500 mm)	59.0 in (1500 mm)	64.0 in (1625 mm)	62.0 in (1575 mm)	64.0 in (1625 mm)	62.0 in (1575 mm)	64.0 in (1625 mm)	62.0 in (1575 mm)
Maximum tread width	78.7 in (2000 mm)	78.7 in (2000 mm)	88.0 in (2235 mm)	88.0 in (2235 mm)	88.0 (2235 mm)	88.0 (2235 mm)	88.0 (2235 mm)	88.0 (2235 mm)
Overall width	90.5 in (2300 mm)	90.5 in (2300 mm)	90.5 in (2300 mm)	90.5 in (2300 mm)	93.3 in (2370 mm)	93.3 in (2370 mm)	93.0 in (2370 mm)	93.0 in (2370 mm)
Overall height	104.0 in (2640 mm)	107.0 in (2720 mm)	107.3 in (2725 mm)	112.2 in (2850 mm)	109.6 in (2785 mm)	116.7 in (2965 mm)	109.8 in (2790 mm)	109.8 in (2790 mm)

*Manufacturer's estimate

**Not for sale in Nebraska.

(1) Other options: 11.00 x 16 (F2) 11.00 x 16 (F3) (2) Other options: 18.4 x 38 (R1) 23.1 x 26 (R1) 23.1 x 26 (R3) (3) Other option: 14.9 x 24 (4) Other option: 16.9 x 38

Dealer support sets us apart.

You can count on your Deutz-Allis dealer for a lot more than great products. You also get industry-leading, comprehensive parts and service support to keep your equipment on the job and earning. Stop in soon and get acquainted. And while you're there, ask about the innovative financing programs designed to make it extra-easy for you to enjoy all the benefits of Deutz-Allis equipment. You'll agree, Deutz-Allis dealer support really sets us apart.

The information contained herein is general in nature and is not intended for specific application purposes. Deutz-Allis reserves the right to make changes in specifications shown herein or to add improvements at any time without notice or obligation.

"The National Institute for Farm Safety and the National Safety Council advise that statistics show that the severity of injuries has been greatly reduced and fatalities practically eliminated through use of both Rollover Protection Structure (ROPS) and safety belts when misuse or operator error causes a tractor to overturn."

DEUTZ-ALLIS Corporation

P.O. Box 933, Milwaukee, Wisconsin 53201

Form No. AED 1108-8611

Printed in U.S.A.

