

# FORD

# NEW 1200



## Small in size, big in workpower

This compact four-wheel-drive powerhouse packs a 16-horsepower diesel engine, 10-speed transmission and more than 1,200 pounds of working weight into a tractor just 42.2 inches wide.

The Ford 1200 is built like a big farm tractor, around a backbone of heavy cast housings for engine, transmission and rear axle.

It's equipped like a big tractor, too. Standard equipment includes built-in live hydraulics... a Category I 3-point hitch with hydraulic position control... double-reduction final drive... differential lock... 540 rpm PTO with over-running clutch protection... adjustable rear wheel tread... independent rear turning brakes... and more.

The 1200 is powered by a 4-cycle, liquid-cooled diesel engine, precision balanced for smooth performance. Glow plug assists cold weather starting.

Standard front-wheel drive system gives you four-wheel pulling power when you need it—in slippery conditions, hilly terrain, in snow—anywhere you want extra traction. It makes steering easier in loose or wet soil, too. The oscillating front axle pivots at the center to keep both wheels planted firmly on rough, uneven ground.

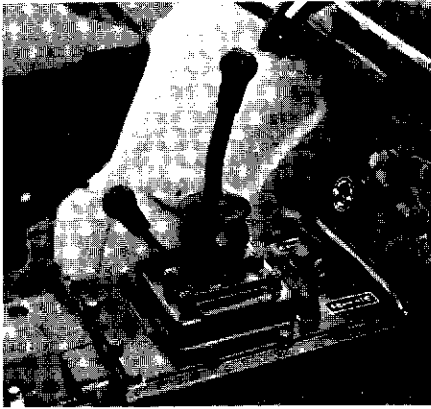
Compact dimensions (48-inch wheelbase, 42.2-inch working width) give Ford 1200 excellent maneuverability and easy handling. Turning radius with brakes is a tight 78.7 inches.

The cushioned seat adjusts for your best driving position. Instrumentation includes a tachometer/hourmeter and warning lights for engine oil pressure, alternator, and coolant temperature. The complete lighting package includes headlights, a taillight and flashing warning lights.

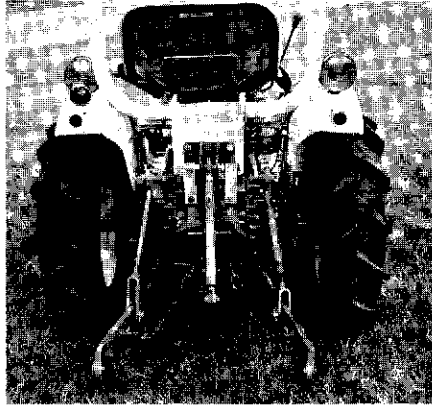
Maintenance is simplified by a hood that tilts forward for engine servicing. Flip-up covers provide easy access to radiator and fuel filler tubes.

Options and accessories to help tailor the Ford 1200 to your kind of work include turf tires, rear wheel and front-end weights, a remote hydraulic control valve, and creeper gears that give you 15 forward speeds.

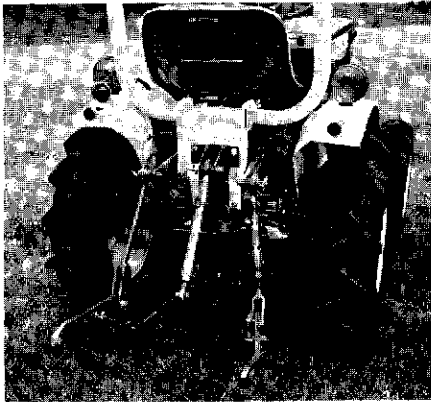
# Big-tractor features



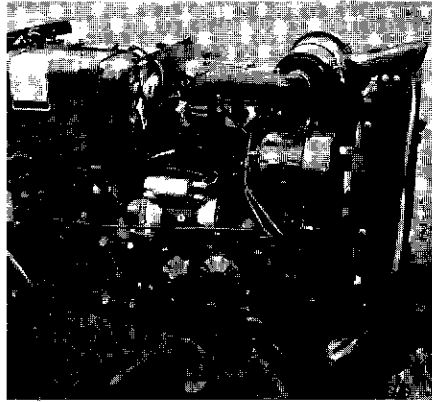
Standard-transmission provides 10 forward speeds to give you the right combination of ground speed and engine rpm for just about any kind of work. Optional creeper gear gives you even greater gear choices for special jobs.



Narrow overall width lets the Ford 1200 work where other tractors can't. Rear wheel tread adjusts to 35.4 or 41.3 inches to accommodate a variety of applications. Agricultural tires are standard, turf tires optional.



A large 4.3 gpm hydraulic pump gives the 3-point hitch 881 pounds of lift capacity at the link ends to handle mounted implements easily. Hydraulic position control is standard equipment.



A husky 49.1 cubic inch diesel engine provides the power. Hood tilts forward for servicing access. Spin-on oil filter helps simplify routine maintenance.



# Specifications

## ENGINE

Gross engine hp (kW)	16 (11.8)*
PTO hp (kW)	13.5 (9.9)*
No. of cylinders	2
Bore, in. (cm)	3.15 (8)
Stroke, in. (cm)	3.15 (8)
Displacement, cu in. (cu cm)	49.1 (804)
Compression ratio	23:1
Rated engine speed	2700
Lubrication	Pressurized
Cooling	Liquid
Air cleaner	Dry

\*Manufacturer's estimate

## DRIVELINE COMPONENTS

Clutch, diameter, in. (cm)	7.1 (18)
Final drive	Double reduction
Brakes	Drum
Steering	Manual
Transmission, standard	10 speed
optional	15 speed

## CAPACITIES Liquid measures in U.S. units

Fuel tank, gal (liters)	3.7 (14)
Crankcase, qt (liters)	4.2 (4)
Transmission, hydraulic system and differential, qt (liters)	20 (19)
Cooling system, qt (liters)	4.2 (4)
Hydraulic pump capacity, gpm (lpm)	4.3 (16.3)
Hydraulic lift capacity, lbs (kg)	881 (400)

## DIMENSIONS

Wheelbase, in. (cm)	48 (122)
Rear wheel tread, in. (cm)	35.4/41.3 (90/105)
Front wheel tread, in. (cm)	34.6 (88)
Overall length, in. (cm)	94.9 (241)
Turning radius w/brakes, in. (cm)	78.7 (200)
without brakes	96.6 (230)
Ground clearance, in. (cm)	9.7 (24.6)
Width, in. (cm)	42.2 (107.2)
Weight, unballasted, lbs (kg)	
(less ROPS)	1,244 (564)
Agri. tires, front	6.00-12
rear	8.00-16
Turf tires, front	23x8.5-12
rear	8.00-16

Ford offers a broad range of implements to help you take advantage of the power and versatility of the Ford 1200 tractor. The list includes mowers, rotary cutters, plows, harrows, rotary tillers, front dozer and rear blades, a front loader, front and rear snow throwers—even a 6-foot backhoe.

*Design, materials and/or specifications are subject to change without notice and without liability therefor. Specifications are applicable to units sold in Canada, the United States, its territories and possessions and may vary outside these areas.*

**YOUR FORD TRACTOR AND IMPLEMENT DEALER**

