

# ISEKI

**tractors**  
2 & 4 wheel drive

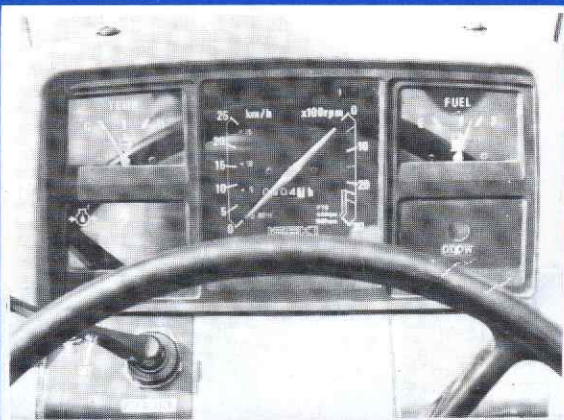
# TE4370



*Iseki TE series*

**the 'big' tractors for small situations**

# tractors TE4370



## TE 4370 2 & 4 wheel drive

### ENGINE

1. The 4 cycle, 4 cylinder, water cooled diesel engine produces high output, powerful torque, yet quiet operation.
2. Iseki's exclusive swirl chamber type combustion system features high combustion fuel efficiency for economical operation.
3. Circulating emission control system fitted as standard.
4. Unique five bearing support overhead cam, driven by front mounted belt.
5. Same engine in automotive use produces in excess of 50 hp.
6. Ingenious handy 'key-stop' comes as a standard feature.

### MAIN FEATURES

1. Synchromesh transmission for fast efficient 'change on the move' operation without power loss.
2. Simple locating gate arrangement for 'no miss' gear changes.
3. 18 forward, 6 reverse incorporating creeper medium and work range of speeds.
4. Independent P.T.O. clutch with dash mounted control enables engagement at the 'flick of a lever'.
5. Integral power steering for smooth precise steering.
6. A large capacity, wet type disc brake produces instantaneous powerful braking. Equipped with an independent hand brake.
7. Position/draft control hydraulics give total efficiency for mounted implements either with or without depth gauges.
8. Iseki bevel gear, 4 wheel drive incorporating fully sealed high loading rate system.
9. Fully instrumented monitor for accurate and easily definable readings.
10. Tilt steering wheel and adjustable seat for maximum driver comfort.
11. Completely re-styled bulk head for maximum accessibility.
12. Available in 2 wheel drive configuration providing the optimum in manoeuvrability in all applications.

Specifications are subject to change without prior notice.

## SPECIFICATIONS

<b>Engine</b>	Model	Isuzu 4 FBI						
	Type	Water Cooled 4-cycle Diesel						
	Total displacement	1817cc						
	Bore x Stroke	84 x 82 mm						
	Output power SAE	40/2600 hp/rpm						
	Max. torque	11.0/1500 kg-m/rpm						
	Fuel tank capacity	40 litres						
<b>Dimensions</b>	Overall length	3210mm						
	Overall width	1530mm						
	Overall height	2000mm						
	Min. ground clearance	360mm						
	Wheelbase	1800mm						
	Shipping weight	2wd 1330kg		4wd 1445kg				
	Tread	Front	2wd 1150 - 1550mm		4wd 1210mm			
Rear		1140 - 1500mm						
<b>Travelling Speeds</b>	Forward km/hr	L	1	0.36	L	1	2.17	
			2	0.51		2	3.09	
			3	0.67		3	4.12	
		H	1	0.79	H	1	4.83	
			2	1.12		2	6.86	
			3	1.50		3	9.16	
	Reverse km/hr	L	L	0.48	L	L	2.80	
			M	1.07		M	6.51	
			H	2.61		H	15.92	
		R			R			
						(24.6)		
<b>Chassis</b>	Clutch	Dry - single disc (240 mm)						
	Transmission	Synchromesh (Main transmission)						
	Steering	Power Steering/Integral						
	Brake	Wet - Disc						
	Battery	12V - 80AH						
	PTO shaft	¢35mm 6 - spline						
	Tyre	Front	6.00 - 16 2wd				8 - 18 4wd	
		Rear	12.4 - 28					
	PTO	Independent Hydraulic						
	2 speed	540 @ 2200 rpm - 1000 @ 2200 rpm						
<b>Hydraulic Capacity</b>	3-point linkage	Category one						
	Pressure	145 kg/cm <sup>2</sup> (2100 PSI)						
	Pump capacity	21 litre/min						
	Lifting power	1230 kg (at lower link point)						
	Control	Position, Draft						

Dealer