

ISEKI Tractors



TX2140 / 2140F

TX2160 / 2160F

4-wheel drive and 2-wheel drive

TX2140 / 2140F TX2160 / 2160F



 **ISEKI**

ISEKI Tractors

TX
SERIES

Iseki's powerful tractors

TX2140/2140F TX2160/2160F



2-wheel drive

Wide Range of Applications, Superior Performance, Safe Design

ISEKI's TX series tractors (TX2140F/2140, TX2160F/2160) are designed for year-round use with water-cooled, four-cycle, three-cylinder diesel engines. Output ranges from 14 to 15.5 PS. These compact tractors are the first in their class to be equipped with a hydraulic lifting unit with position control. A wide variety of attachments and implements are available. Safety has been one of the first considerations in the designing of these tractors. Even a novice can operate a TX series tractor in complete safety. TX series tractors are equally effective in paddy field, farm and pasture and garden.

Powerful and Economical Water-cooled, Three-cylinder Diesel Engine

- *The three-cylinder diesel engine (14 ~ 15.5 PS, 776 ~ 849 cc) has a greater piston displacement than that in other engines with the same output, and is economical and tough. It makes short work of heavy-duty jobs.
- *A forced-circulation water-cooling system with a thermostat means TX series tractors can be used for extended periods of time.
- *There is less noise and vibration with the three-cylinder engine and a "deluxe" muffler further ensures quiet operation.
- *Fuel costs are substantially reduced



tractors guarantee a job well done.



4-wheel drive

by a highly efficient swivel-type combustion chamber.

- * An automatic MS retarder in the injector regulates the rate of fuel injection. This, in addition to a large-capacity battery, reliable starter and preheated glow plug makes for easy starts even in very cold weather.
- * The completely waterproof and soil-proof construction of the TX series tractors means they can be used in paddy fields and on muddy ground.

Light and Stable Operation

- * Compared to the two-wheel drive, the four-wheel drive TX series tractors give a smoother ride, better traction and excellent balance in wet and

muddy fields and along steep sloping terrain.

- TX series tractors are applicable for a wide range of operations.
- * Balanced weight distribution minimizes floating and sinking of the front wheels and prevents spinning and slipping.
- * The New Balance tires used for the rear wheels have excellent traction, and because there is less vibration they ensure a smooth ride.
- * A flange mounting for the rear wheels facilitates tire changing. Wheel tread can be easily adjusted.

Medium Tractor Size Hydraulic System

- * A single position control lever con-

trols attachments and allows you to change height and depth at a touch. High-precision operation is possible with any type of attachment. Depth adjusting wheels are not necessary even with rotary attachments.

- * There is an external hydraulic unit that is independent of the internal hydraulic unit. Either one can be easily taken out for efficient use of a wide variety of attachments.

Operates Smoothly and Rides Like a Passenger Car

- * The large, high-back seat has been designed on the basis of human engineering principles and can be easily adjusted to suit the driver's

physique for comfortable operation and minimal fatigue.

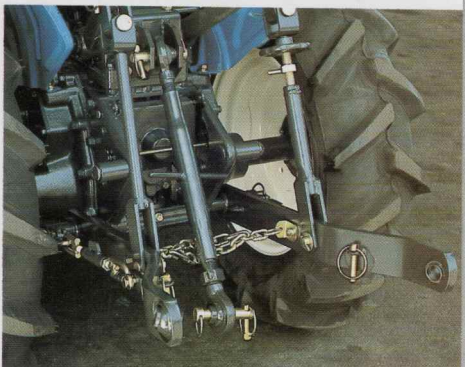
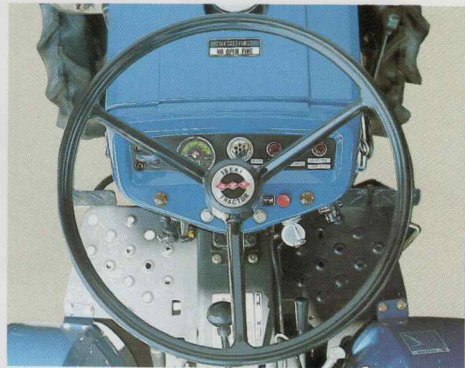
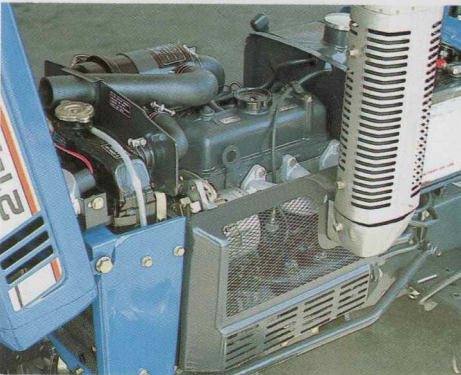
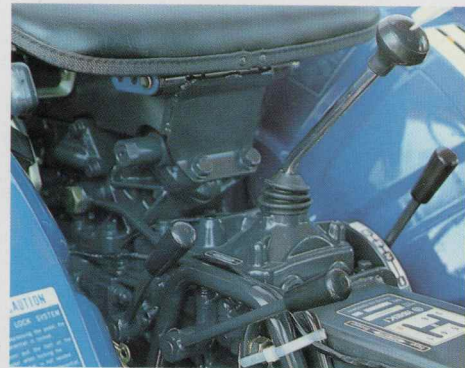
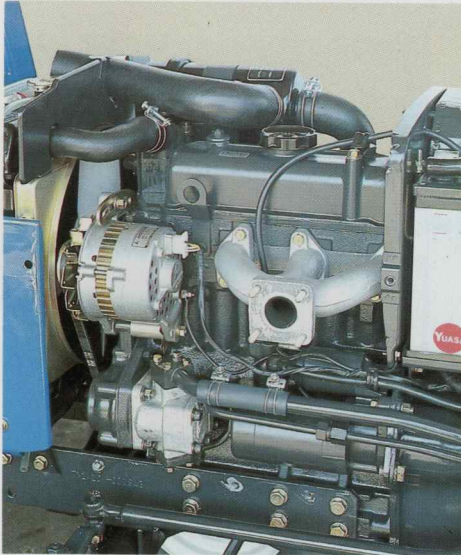
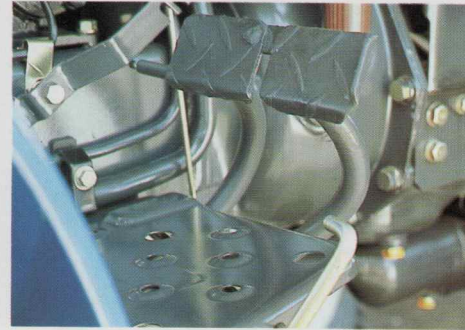
- * Acceleration can be controlled through both a hand lever and a foot pedal. Either can be used depending on whether you are simply driving the tractor along a road or working in a field.
- * The hydraulic control, main gear shift and auxiliary gear shift level are all within easy reach.
- * The standard tractometer, speedometer, water temperature warning lamp, charge lamp and other meters and lamps are conveniently laid out on the dashboard in front of the driver for easy operation control, maintenance and inspection.
- * A funnel-shaped steering wheel with a ball-screw makes tractor operation light and steady.
- * A heavy-duty, jaw-type differential lock can be engaged with your foot to gain traction in slippery situations.

Completely Safe Design Assures Operator's Safety

- * A safety switch prevents the engine from being started until the clutch is disengaged. Even a beginner can operate a TX series tractor in complete safety.
- * All moving parts and parts that heat up are shielded by a safety cover. Other safety features include the wide rear wheel fenders and a step for easy boarding and alighting.

Operating Capabilities for All Seasons

- * There is a choice of six forward and two reverse speeds. An optional "Creep Mission" attachment allows operation at a superslow speed for trenching and snow blowing.
- * The muffler can be easily adjusted to a vertical or horizontal position to suit a variety of working conditions. This flexibility is especially convenient when working in limited space such as in a greenhouse or orchard.
- * The TX series tractors can be used year-round for cultivating rice, wheat, barley, beans, tobacco, various vegetables and fruits.





A Wide Range of Attachments for Every Purpose

Cultivating	Rotary hoe, two-furrow reversible plow, bottom plow, deep-tillage rotary
Harrowing and levelling	Spring leveller, puddling rotor, puddling harrow
Ridging	Ridger, rotary plow, hiller, furrowing blade, rotary ridger
Fertilizing	Lime sower/broadcaster
Soil disinfecting and mulching	Soil disinfector, mulcher, rotary mulcher
Seeding	Seeder

Pest control	Lead sprayer, boom sprayer, speed sprayer
Harvesting	Potato digger
Haying	Rear mower, flail mower, rotary mower
Loading/transporting	Front loader (earth bucket, manure fork), rear carrier, front carrier, trailer
Other	Supplemental wheels, proof canopy, front PTO, car washer

Specifications

Model	TX2140F	TX2140	TX2160F	TX2160
Engine				
Type	Water-cooled 4-cycle diesel		Water-cooled 4-cycle diesel	
No. of cylinders	3-cylinders		3-cylinders	
Total displacement	776 cc		849 cc	
Output	14/2600 ps/rpm		15.5/2600 ps/rpm	
Starting system	Self-Starter		Self-Starter	
Tractor				
Overall length	1,960 mm		2,000 mm	1,980 mm
Overall width	1,140 mm		1,090 mm	
Overall height	1,700 (top of muffler)		1,700 (top of muffler)	
Wheel base	1,280 mm		1,280 mm	
Min. turning radius	2,050 mm	1,850 mm	2,050 mm	1,850 mm
Min ground clearance	250 mm	265 mm	250 mm	290 mm
Weight	525 kgs	485 kgs	540 kgs	500 kgs
Tire size Front	5.00-12	4.50-10	5.00-12	4.00-12
Tire size Rear	8-16		8-18	
Wheel tread Front	765 mm	700 mm	765 mm	700 mm
Wheel tread Rear	750,920 mm		780,890 mm	
Differential lock	Equipped		Equipped	
Fuel tank capacity	12 ℓ		12 ℓ	
Travelling speed	km/hr		km/hr	
Forward 1st	1.0		1.1	
2nd	1.6		1.7	
3rd	2.6		2.8	
4th	4.6		5.0	
5th	7.2		7.8	
6th	12.0		12.8	
Reverse 1st	1.3		1.4	
2nd	6.1		6.5	
P.T.O	r.p.m.		r.p.m.	
Front	2,600		2,600	
Rear 1/2/3	454/724/1,185		454/724/1,185	
Implement lifting device				
Type	Hydraulic with position control		Hydraulic with position control	
Mounting method	3P		3P-	
Rotary hoe (optional)				
Type	SR1100CD (side drive)		SR1200CD (side drive)	
Tilling width	1,050 mm		1,200 mm	

* F type is 4-wheel drive.

* Turning radius is measured with rotary hoe mounted.

* Specifications are subject to change without notice.

FARM MACHINERY & EQUIPMENT ISEKI & CO., LTD.

Foreign Affairs Division

3-6, Kioi-cho, Chiyoda-ku, Tokyo, 102 Japan

Cable Address: ISEKIRICE TOKYO

Telex: 232-2752, 232-2753 Phone: (03) 238-5245~5260