

THE INFORMED CHOICE

**NEW HOLLAND SERIES 60
100 TO 160 HP TRACTORS
MODELS 8160, 8260, 8360 AND 8560**



NEWHOLLAND



The investment to deliver technology

INVESTING IN YOUR FUTURE

NEW HOLLAND HAS THE TECHNOLOGY TO CREATE ADVANCED PRODUCTS.

Looking to the future has always been New Holland's strength, utilising vast experience to invest in products for the future.

Series 60 is that future.

The experience of New Holland has been built up over many years in the agricultural and industrial machinery business. Through customer surveys and focus groups New Holland have also gained from the experience of farmers and operators - experience which has been incorporated into the products.

The manufacturing plant has expanded "Inprocess" testing to check components before they are fitted to the tractor. The cab, for instance, undergoes a full, working simulation. This tests the electrical and electronic system. Every engine undergoes a dynamometer test to check its performance.

The advanced assembly of the transmissions and rear axle uses automatically controlled carriages. These bring the sub assemblies together, then deliver the finished assembly to the test position.

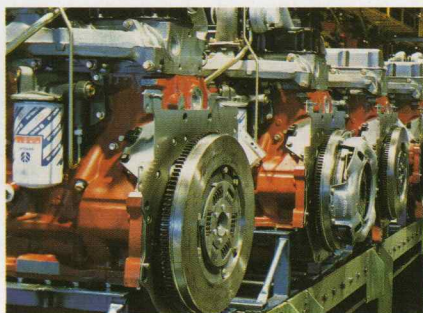
The design, development and introduction of the Series 60 indicates New Holland's

commitment to the agricultural industry. Series 60 embodies a substantial investment to create the products that our customers have demanded. Their technical innovation and powerful operation provide just that.

The manufacturing facilities have been expanded for further advances in quality - even more evidence of New Holland's commitment to the agricultural industry.



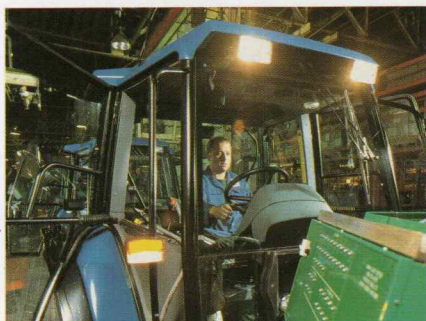
The latest engineering techniques have been incorporated to provide a quality design.



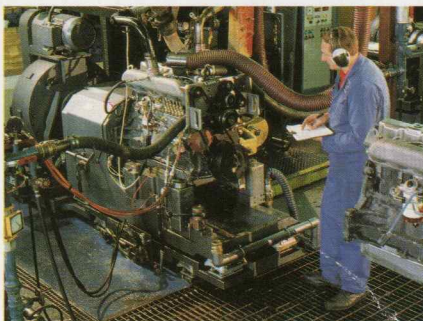
The continuous production line turns engine blocks into completed engines ready to be tested.



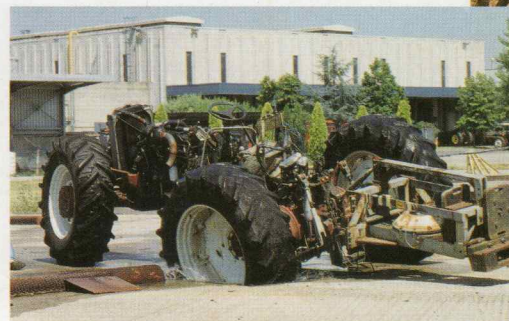
The transmission and rear axle of the Series 60 are transported between assembly positions by automatic carriages.



The cab systems are checked before being fitted to the tractor. A test rig simulates the operation of the tractor in the factory.



Every engine undergoes a rigorous dynamometer test before being fitted to the tractor.



Rigorous testing of the Series 60 tractors has proven their reliability and rugged manufacture.



Evolving to meet changing needs

MORE FEATURES AND PERFORMANCE

BUILDING UPON PROVEN STRENGTH.

The established Series 60 tractor range have a proven reputation for rugged performance and genuine versatility.

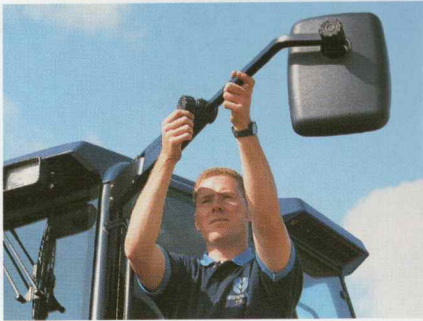
New Holland has built upon this, the current models having evolved and developed to offer more features to meet changing requirements.

What has not changed are the very points that have made these tractors the acknowledged leaders in their power class.

The constant power delivered from the high capacity engines. The outstanding Range Command™ transmission with its 6 Powershift speeds in each range.

TerraLock™ continues to set new standards in advanced, automatic traction control.

New Holland's ElectroLink™ hydraulic system has also proven it can deliver precise implement control to really make the most of available performance. These established strengths have been enhanced with detail changes to the latest models.



The cab mirrors can be quickly extend to 3 m wide on telescopic stems. This provides added rear visibility around wide or awkward loads.

The front linkage folds quickly and easily for transport, with the top link securing in place. Walterscheid quick couplers provide fast and secure coupling with implements.



A pivot system on front fender equipped models enables full lock to be retained. This increases turning capacity by up to 30% when compared to fixed fender systems.



From a new PTO control through to clever front fenders that enable full steering lock to be retained, the Series 60 offer advanced features with an established record of performance and reliability.

Take a fresh look at the Series 60 tractor range. Proven strengths and detail change make these tractors the outstanding choice in their sector.

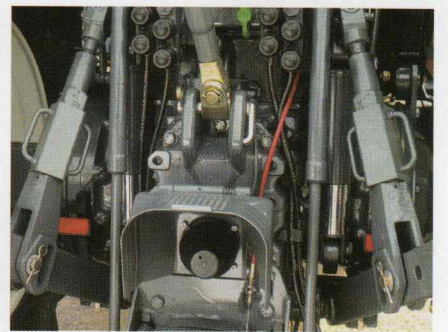
Proven and reliable, Series 60 tractors deliver outstanding performance. New Holland's policy of product development means current models offer more features but retain the ranges established strengths.



Powerful front axle multi-plate brakes are now available to further improve braking performance from high transport speeds.



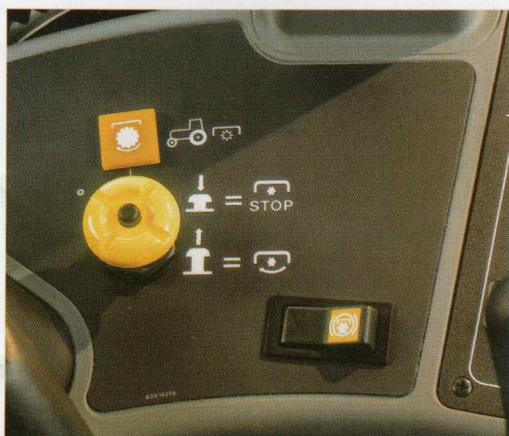
Clear and concise controls allow precise operation. The single lever joystick controls two double acting remote valves.



Even greater rear lift capacity is available when 2 assist rams are specified.



Cab detail improvements include a mobile telephone clip, digital clock and more implement monitor box mounting points.



The pull out PTO engagement control incorporates smoother power engagement. Simply pressing the knob will immediately disengage drive and apply the safety brake. A rocker switch allows the brake to be held in the disengaged position for high inertia implements.

Powerful efficiency

THE POWER TO BE OUTSTANDING



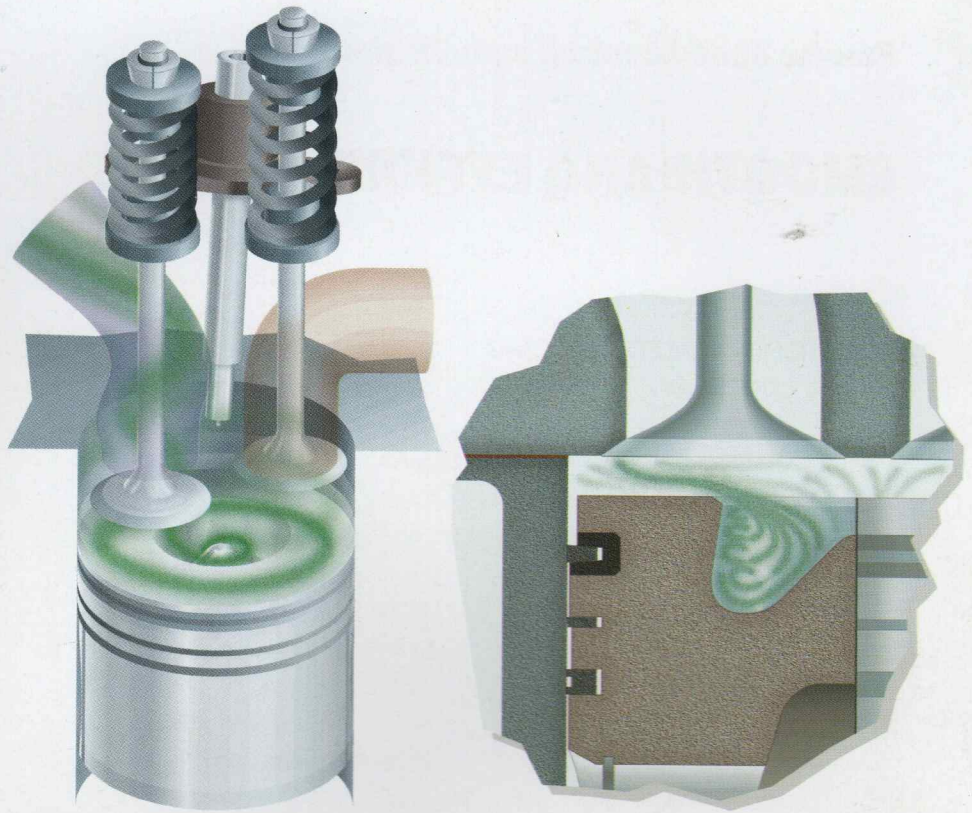
NEW HOLLAND ENGINES, CONSTANT POWER, CONSTANT PERFORMANCE.

New standards of power and performance are delivered by the outstanding New Holland engines designed as an integral part of the Series 60 tractors. The powerful performance of Series 60 engines allow real working flexibility, their constant power output is unlike other tractors. Constant power means greater field performance, less gear shifting and a more efficient work rate. Rigorous testing has shown the refinement of the New Holland engine. Exceeding the tough new emission laws scheduled for 1997, prove that it is an engine for the future. Durable and strong.

The latest technology such as "finite element analysis" has refined the engine structure to increase efficiency. Precise fuel injection and an innovative "re-entrant" piston bowl combine to optimize combustion efficiency. Constant power delivers flexible tractor performance. The performance of the Series 60 engine provides real flexibility. Power remains constant down to an amazing 1750 rpm and while torque rises by an impressive 43% to a maximum at a low 1500 rpm. Constant power reduces the need to shift gears. The performance of the Series 60 tractor engine is complemented by its ever apparent ingenuity. The engine hood lifts clear for excellent access.

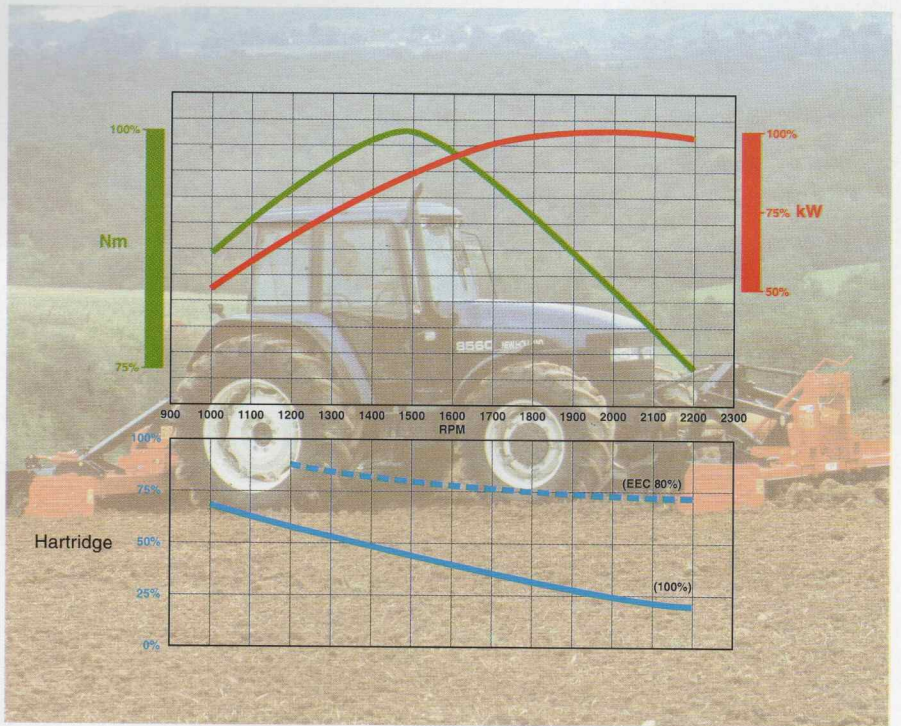
The oil cooler and air conditioning condensers slide out to permit effective cleaning of the radiators. The single, poly vee belt has an automatic tensioner, maintaining optimum performance. Increasing the length of the working day has been achieved with the combination of excellent fuel efficiency and high capacity fuel tanks. Independent tests have proven the Series 60 tractor engine to be one of the best in its class, providing the in-field performance that you demand with startling efficiency. You really have to experience it to believe it.

New engines deliver constant power across a wide speed range for more efficient performance.



The snail shell inlet porting maximises the filling effect of the cylinder.

Re-entrant piston bowl optimizes combustion for low emissions.



Power exceeds its rated level down to a low 1750 rpm, while torque rises sharply by up to 43% down to a maximum position as low as 1500 rpm, delivering powerfully flexible performance.



The engine hood hinges up to allow excellent access to the engine. The slide-out coolers provide unparalleled access to the radiator.

Precise speed control, smooth shifting

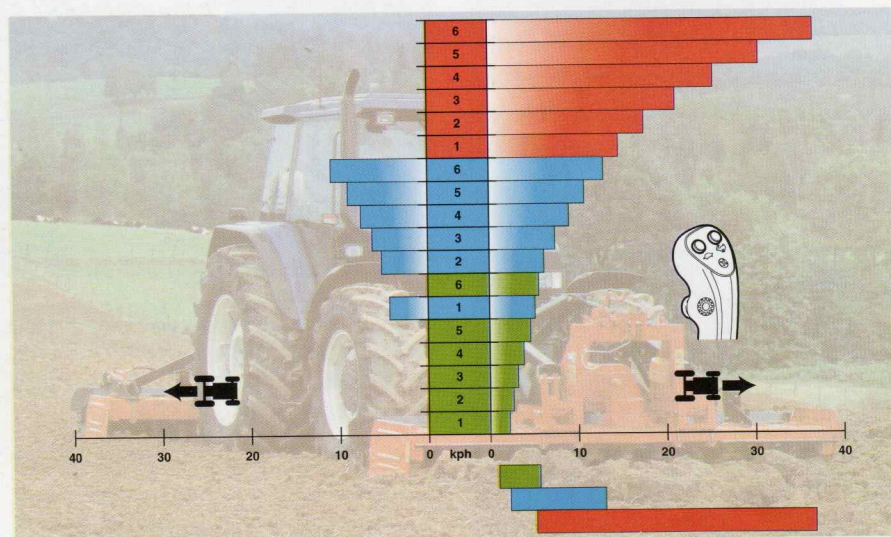
SMOOTH AND EFFICIENT SPEED CONTROL

POWERSHIFT SPEEDS PLACING YOU IN CONTROL.

Making the most of the incredible power that the Series 60 tractor engines have to offer requires ground speeds to be shifted quickly. This is where the technologically advanced Range Command™ transmission proves its value. The Range Command transmission is no ordinary semi powershift. 6 speeds in each of 3 ranges and a power shuttle provide 18 forward and 6 reverse gears. The 6 sequential powershift speeds are shifted with only a touch, providing a wide speed band without having to shift ranges. The position of the dedicated hand control can be adjusted to suit you. 2 touch pads control the 6 Powershift speeds, while a third switch, (lower down) allows ranges to be shifted without using the clutch pedal. An audible warning tells you when it is time to shift ranges, press the third switch and then the upshift touch pad for a higher range or downshift touch pad for a lower range - it is that simple!

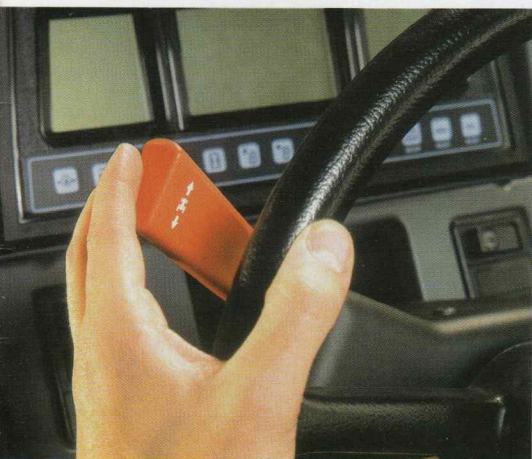
Shifting between the 6 sequential gears is smooth and precise utilising modulated, electro-hydraulically controlled multi-plate clutch packs. Clutch packs which utilise oil cooling to extend their working life. The important field ranges of low and medium (A and B) overlap to maximise the benefit of the powershift speeds. The flexible speeds available in each range reduces range shifts - maximising field productivity. High range (C) offers an automatic feature for effective transport. Series 60 will only pull away in first speed, but up to sixth can be selected, as the tractor accelerates the next gear is automatically shifted until the selected gear is reached.

The 3 forward ranges are complemented by a reverse range. Just shifting the low effort lever shuttles between forward and reverse speeds. The reverse speed can be preselected to suit the application, eg. a faster reverse can be preset for fast turning. A creeper range adds an extra dimension to the Range Command transmission. The optional, ultra slow speeds combine ground speeds as low as 370 metres per hour with the six sequential shifts to provide specialist field performance. The Range Command transmission sets new levels of performance and productivity in transport or on the field - just try it!

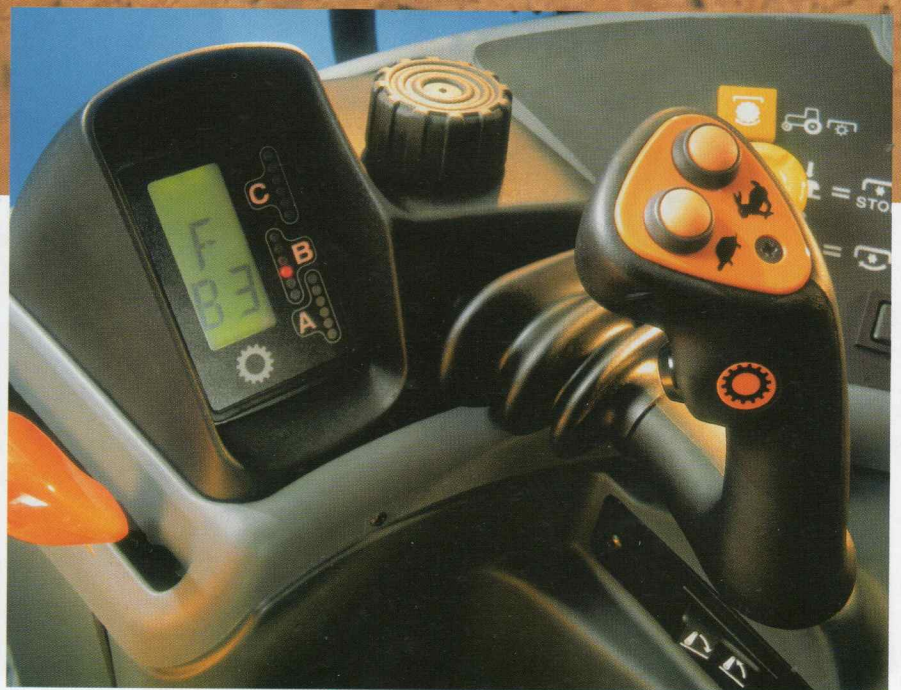


Six powershift speeds in each range provide a wide speed range. The lower two ranges overlap to optimize field performance reducing the need to shift ranges.

Speed and power can be closely matched using the Range Command transmission to extend field performance.



Mounted on the operator's left the power shuttle smoothly shifts direction with minimal effort.



The position of the ergonomically designed control lever can be adjusted to suit the operator. The two touch pads control up and down shifts through the ranges. In association with a third touch pad, ranges can be shifted without the clutch pedal.

Matching the needs

SPEED SELECTION TO MATCH YOUR DEMANDS

TRANSMISSIONS WITH FLEXIBLE SPEEDS SELECTION.

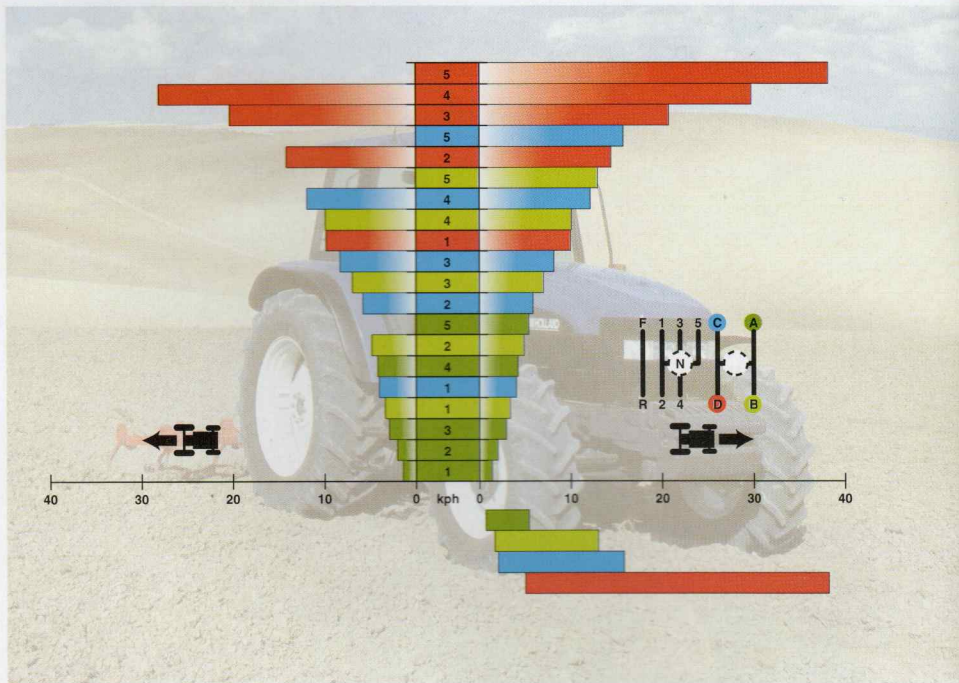
Providing the correct speed and shift type for a wide variety of applications is where Series 60 offers diversity. From the robust Shuttle Command™ through the rugged Dual Command™ to the advanced Range Command™ - the choice is yours.

The Shuttle Command transmission offers 4 fully synchronised gears in each of 4 ranges and a fully synchronised shuttle control. These provide straight forward speed selection and effective manoeuvring.

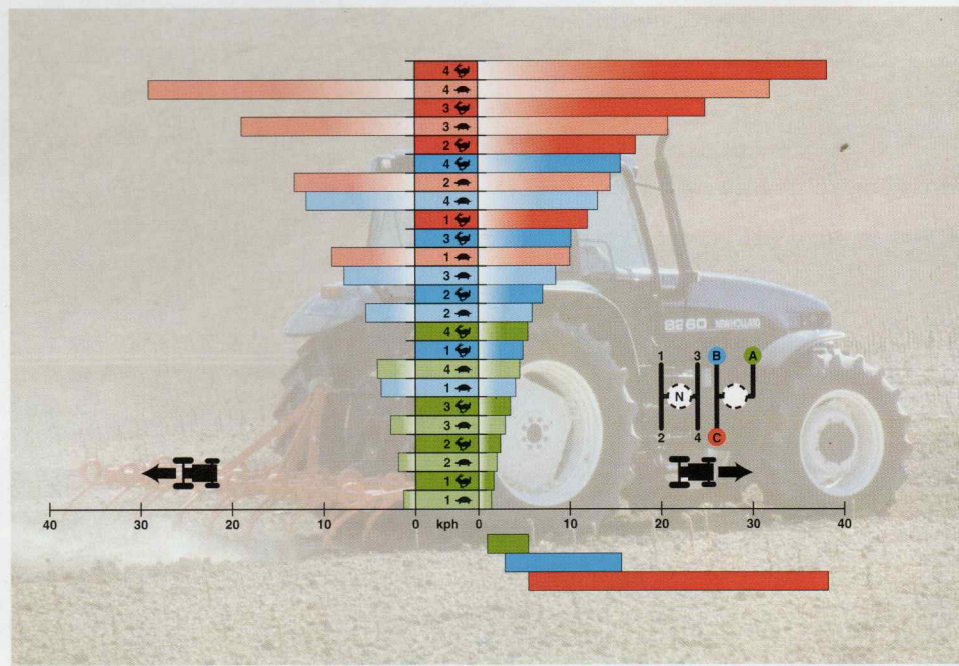
The overlapping ranges reduce range shifts and ensure that the right speed can be found for most applications. An additional overdrive gear in each range delivers a top speed of 40 kph.



Shuttle Command transmission provides a synchroneshuttle.



Shuttle Command offers synchroneshuttle speed selection with equal forward and reverse speeds.



Speed ranges overlap to maximise field performance and reduce the need to shift ranges. The two powershift speeds in each gear provide better working flexibility allowing the engine power to be more closely matched to the application.

For specialist ultra slow applications the optional creeper provides speeds as slow as 230 metres per hour at engine rated speed. The Shuttle Command transmission combines economy with robust design and easy synchronised shifting to provide a cost effective performance package. When greater flexibility is needed the Dual Command transmission has more to offer. With 4 synchromesh gears in each of 3 ranges, Dual Command in each gear enables greater field performance and the power shuttle provides effective manoeuvrability.

Dual Command provides a shift under load in every forward gear. The gear lever mounted touch pads provide two smooth, powershift speeds to enable closer matching of engine performance to implement application. The oil cooled, multi-plate clutches provide smooth speed and direction changes. For effortless shuttling, just move the lever into the reverse position and two multi-plate clutches do all the work. Modulated control disengages the forward clutch and smoothly engages the reverse clutch, powering you into reverse.

To expand further the versatility of the Dual Command transmission the optional creeper range doubles the number of gears available - providing speeds as slow as 230 metres per hour at engine rated speed. Series 60 tractors - offering a choice of transmissions to meet the demands in the field.



Dual Command offers flexible speed control with two powershift speeds in each gear. The power shuttle control is on the left of the steering column.

Robust tractive performance

TRACTION ON DEMAND

Air brakes can be fitted on the production line to allow Series 60 tractors to operate with large trailers.



Series 60 tractors have the tractive performance to fully utilise the outstanding power available, their rugged drive axles combine with TerraLock to ensure performance.



TERRALOCK™ SYSTEM PROVIDES TRACTION WHEN IT IS NEEDED.

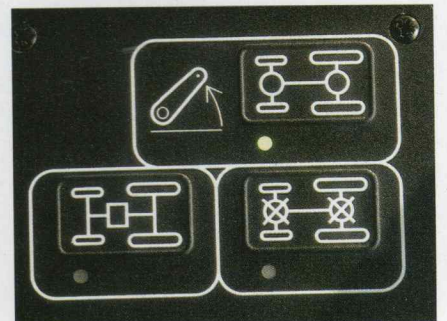
The transmission choice offered by the Series 60 tractors allows speed to be matched to application. However converting that “application matched” power into working traction combines robust construction with design ingenuity.

From their robust axle construction to the front and rear locking differentials the Series 60 proves its tractive performance in the field - but not at the expense of manoeuvrability. The combination of a 55° steering angle, forward / reverse shuttle and the ingenious TerraLock system make sure of that.

To obtain optimum utilisation of the

traction and manoeuvrability the TerraLock system precisely controls the four wheel drive and differential locks. There are 2 modes; traction and manoeuvrability. Traction; four wheel drive engaged and differentials locked. Manoeuvrability; four wheel drive disengaged and differentials unlocked.

TerraLock system can automatically shift to manoeuvrability for fast turns at the end of the field.



When selecting the top right touch pad the front and rear differentials are disengaged when the Lift-o-matic control is used.



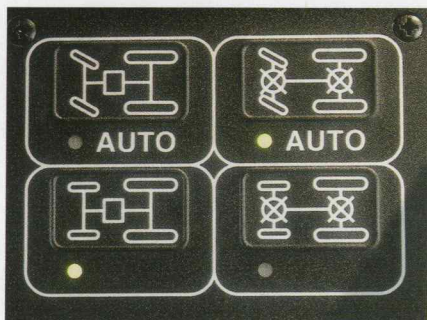
The tractor is turning tightly at the end of the field. When "auto" is selected TerraLock automatically shifts between traction and manoeuvrability allowing the operator to concentrate on the implement. The ingenuity of the TerraLock system provides productive performance with a wide variety of equipment, fully mounted, semi-



TerraLock system provides traction by engaging four wheel drive plus front and rear differential locks.

mounted and trailed, expanding the versatility of the Series 60 tractors, making turning at the end of the field easier. Control during transport is provided with multi-plate, hydraulically applied tractor brakes working in combination with the trailer's or implement's hydraulic or air braking system. To maximise manoeuvrability a dedicated

hydraulic pump provides low effort, precise steering. Series 60 tractors provide traction or manoeuvrability on demand.



The advanced TerraLock system can automatically shift between traction and manoeuvrability. It also provides permanent engagement of four wheel drive and front and rear differentials



When the Series 60 tractor returns to work the TerraLock system returns to traction, re-engaging four wheel drive plus front and rear differential locks.

Information is the key to productivity

INGENIOUS TECHNOLOGY KEEPS YOU INFORMED

The information made available to the operator advances productivity, offering a read out of area worked and work rate.



The analogue instrument panel provides clear and concise information.

The LCD panels of the analogue instrument panel provide ground / PTO speeds and three point linkage lift height.

A low intensity light illuminates the essential controls, keeping glare to a minimum.



The electronic instrument panel displays relevant information. The three Liquid Crystal Displays (LCD) provide clear concise information. The left for the engine, centre panel for engine / transmission / PTO speed and the right the renowned performance monitor.

ESSENTIAL OPERATING FUNCTIONS ARE CONSTANTLY MONITORED TO OPTIMIZE PERFORMANCE.

Keeping the operator informed throughout the working day is essential for maximum productivity. This has been a prime consideration throughout the development of the Series 60 tractors.

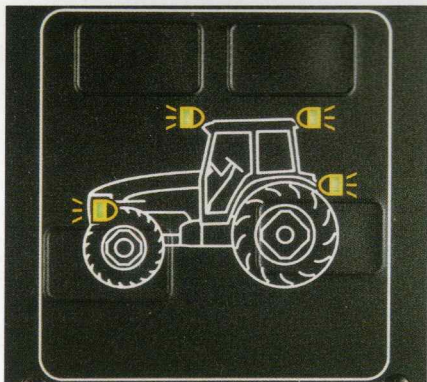
The operator environment is one of the finest tractor command centres in the market today. Well positioned controls and constantly updated instrumentation give operators the knowledge that they are in complete command. The analogue instrument panel provides engine speed, fuel level and coolant temperature.

The analogue electronic instrument panel offers additional features through the two LCD displays, ground speed and PTO shaft speed and implement height are clearly displayed.

To maximise the information available to the operator the advanced electronic instrument panel displays a wide range of constantly updated information. From fuel level to area worked to service timing - the information is displayed on clear and concise LCD panels.

To make the information available as easy as possible to comprehend only relevant items are shown. For instance, start the tractor and the centre display shows engine speed, but increase forward speed to above 20 kph and it will

automatically change to forward speed which is more useful for road transport. That is not all, the electronic instrument panel offers the renowned performance monitor, providing information on wheel slip, area worked and work rate to enable you to evaluate the outstanding performance of the Series 60 tractors. The productivity of the Series 60 tractors is not reduced at night. A low intensity light illuminates the important controls inside the cab, keeping glare to a minimum. A touch panel controls the powerful, adjustable work lights. Information and illumination keep Series 60 tractors working productively.



The rugged touch panel controls the powerful work lights.

Powerful work lights, adjustable to suit varying applications, extend night visibility.



The working environment you deserve!

VISIBLY SETTING NEW STANDARDS OF COMFORTABLE CONTROL

SERIES 60 TRACTORS PROVIDE A WORKING ENVIRONMENT WHICH WORKS FOR YOU.

To maximise the productivity throughout the long working days operators must feel as if they are an integral part of the tractor. The advanced Series 60 cab provides that integration between operator and technology, making them an integral part of the productive performance. The rugged entry steps, wide opening doors and the robust grab rails provide excellent access to the comfortable operator's seat.

Once inside, the fully adjusting seat the steering column and Range Command™ lever (where fitted) can be adjusted to suit the operator, allowing a comfortable working position relative to the logically grouped controls. Controls which are easy to operate and provide precise control of the tractor and implement. The long working days can seem shorter when operating Series 60 tractors. The low noise level, outstanding visibility and efficient in cab climate control all combine to reduce operator fatigue.

Forward visibility is maximised by combining perfectly positioned, slim section, vertical cab pillars with a tapered instrument console and sloping engine hood. Looking back the shaped rear fenders and large rear windows ensure all round visibility. The comfort and convenience of the Series 60 cab place you in complete command and offers you all the information you need, or does it? Just take a look.



The outstanding visibility from the Series 60 operator's seat enables productivity to be maximized.

Comfort is standard. An operator's environment that offers more.



The logically grouped controls and fully adjustable operator's seat combine with the spacious cab interior to provide an outstanding operator's environment.



Effective climate controls provides a comfortable working environment allowing temperature to be adjusted to suit the conditions.

Providing the power to improve flexibility

HYDRAULIC POWER ON DEMAND



The joystick control and the advanced Closed Centre Load Sensing hydraulic pump allow 2 hydraulic functions to be controlled simultaneously.

HYDRAULIC PUMPS DELIVERING THE FLOW FOR THE FUTURE.

Agricultural implement technology and control is constantly advancing, placing greater demands on modern tractors. To meet these demands New Holland offer the advanced hydraulic systems found on the Series 60 tractors.

From the rugged open centre, gear pump system to the "state-of-the-art" Closed Centre Load Sensing (C.C.L.S) system - Series 60 tractors offer the best.

All Series 60 tractors have a dedicated steering pump for low effort, precise steering. Hence steering always has the oil flow needed.

Providing hydraulic power on demand is a key to performance. The C.C.L.S. hydraulic pump has an "intelligence" of its own, only delivering pressure and flow demanded. However when there is demand the swash plate piston pump reacts instantaneously to meet it, up to its exceptionally high maximum flow rate.

Another key to performance is converting exceptional hydraulic power into useable performance and control. Series 60 tractors provided the choice; flexion bar draft control or the outstanding ElectroLink™ system, open centre or deluxe remote control valves, the choice is there.

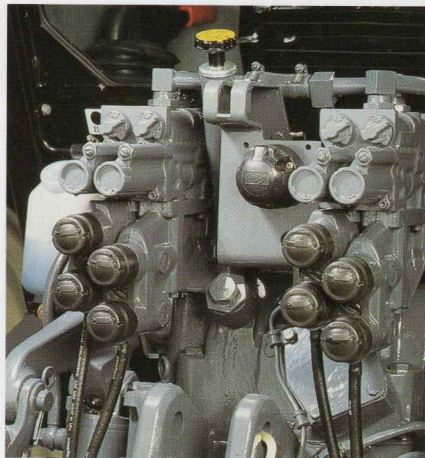
Up to 4 double acting, open centre or deluxe remote control valves can be specified, all controlled by responsive in cab levers. For greater precision Series 60 tractors offer a Joystick control - two double acting remote valves operated simultaneously by only one lever - ideal when working with front linkage equipment. Series 60 tractors offer the flexibility to choose the hydraulic system you need - you choose.



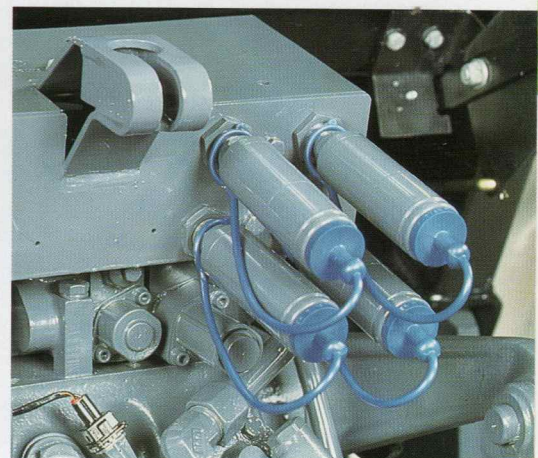
Hydraulic performance is the key to outstanding productivity, Series 60 tractors provide that performance.



With advanced implements the joystick controls two double acting valves.



Deluxe remote control valves offer precise implement control, their flow and detent can be individually adjusted.



Up to four open centre remote valves provide greater choice.

Efficient performance optimizes productivity

UTILISING POWER TO MAXIMIZE EFFICIENCY

EFFICIENT PTO DRIVES AND TOUGH FRONT AND REAR LINKAGES DELIVER REAL PRODUCTIVITY.

Their excellent tractive performance is only one way that Series 60 tractors maximise their productivity. An efficient PTO system is another. The PTO is engaged by pulling up a knob, a safety button preventing accidental engagement. The knob is pushed down to disconnect the PTO, and a brake is applied at the same time. This brake can be released to allow high inertia implements to slow gradually. To match the tractor to your application Series 60 offers a choice of PTO speeds (540, 540E, 1000 and synchronised ground speed). Each speed can be selected using effective in cab controls. Selecting 540E allows 540 rpm implements to be operated at reduced engine speed - so increasing efficiency. Greater and greater productivity is demanded from modern tractors. New Holland have risen to the challenge offering a factory fitted front linkage and PTO system specifically designed for the tractor. This front linkage has an in cab adjustment of maximum lift height, ideal when working with PTO driven front implements. Efficient PTO systems and factory fitted front linkage are further proof of Series 60's leadership in the field.

Front linkage and PTO allow Series 60 tractors to deliver extended productivity.



1000 rpm PTO speed delivers power to the implement efficiently.



540E extends economy when using 540 rpm implement by allowing engine speed to be reduced.



The PTO is engaged via a pull up knob with safety button to prevent accidental engagement. The same control is used where a front PTO is also fitted. To disengage power to the PTO, the knob is pushed down.



The maximum lift height of the front linkage can be adjusted to protect front PTO equipment.



Low effort in cab selection levers provide the flexibility to shift shaft speeds. Output shafts can be easily changed from 6 to 21 splines to suit the implement.



Smooth engagement of the PTO system provides excellent control for 540 rpm implements.

Providing the capacity to precisely control performance

IMPLEMENT CONTROL MAXIMISES TRACTOR PERFORMANCE

OUTSTANDING LIFT CAPACITY AND PRECISE DRAFT CONTROL PROVIDES THE WAY.

Delivering optimum productivity from a tractor / implement combination requires precise, powerful control. Series 60 tractors turn their hydraulic power into integrated field performance through precise draft control. From the mechanical, flexion bar system to the advanced ElectroLink™ electronic sensing system the choice is yours.

Firstly integration requires power, precise power. Series 60 tractors offer a three point linkage and lower link draft control. The relationship between lower link and top link position has been optimized to provide lift capacity where it is needed, behind the link ends, closer to the implement's centre of gravity. Mechanical flexion bar draft control incorporates the industry leading Lift-o-matic™ system, making turning at the end of the field easier. The draft and position levers allow the implements working depth to be set. At the end of the field the Lift-o-matic system lifts implement, and after turning, returns it to its working position. No need to adjust the control levers.

The state-of-the-art ElectroLink draft control system constantly regulates implement depth to maintain optimum performance.



The rugged ElectroLink draft control panel is clear and concise. From top left: lowering speed and Dynamic ride control, maximum lift height, wheel slip override, and draft and position control intermix.



Flexion bar draft control with Lift-o-matic for easier turning at the end of the field.



External control switches aid attachment of implements.



The Lift-o-matic system raises and lowers the implement to make turning at the end of the field easier.



Optimal linkage designs provides lift capacity where it is needed.



When attaching implements external control switches allow the linkage to be precisely positioned. At the heart of the ElectroLink system is a quadrant lever, but to make turning at the end of the field easier the Lift-o-matic system has been incorporated. Its combination with adjustable lift height and drop speed provides greater implement control. ElectroLink adjusts itself to obtain optimum performance, adjusting response speed and fast ground engagement to suit the implement. To compliment the exceptional lift capacity the ElectroLink system incorporates Dynamic Ride Control.

This improves transport stability by dynamically adjusting the implement carrying height to absorb a proportion of the 'bouncing' caused by uneven roads. For optimum field performance ElectroLink draft control can offer wheel slip override. Simply set the control to a maximum value and ElectroLink does the rest, controlling implement depth to keep wheel slip below the set value. Through precise implement control Series 60 tractors offer the productivity by integrating implement and tractor - try it !

ElectroLink draft control integrates the tractor and implement. Its sensitivity and control deliver the productivity which wheel slip override can further expand.

MAXIMISING YOUR WORKING TIME

WORLDWIDE DEALER NETWORK KEEPS YOUR TRACTOR WORKING AT ITS BEST.

Purchasing a tractor is a complex process, weighing up the features and specifications, making the right decisions. New Holland's experience has shown that the service and support offered are also important parts of the equation. New Holland's worldwide dealer network offers the service and support to improve your productivity. The Series 60 tractors include advanced service features to improve field time, storing information that can be accessed by a New Holland dealer to help reduce servicing time. The day to day maintenance of Series 60 tractors is easy. The one piece engine hood hinges up to allow excellent access,

no special tools, no elaborate procedure, just a simple lever and a push - the hood does the rest! Series 60 tractors have 300 hour service intervals, logically positioned service points and easy to access oil and coolant fillers. The attention to detail incorporated into the operating requirements of the Series 60 tractors is further proof of New Holland listening and learning from our customers.

Extensive training courses are offered to New Holland dealership personnel, providing information and training on the Series 60 tractors. New Holland's product support includes its extensive replacement parts warehouses, offer state-of-the-art technology.

With the introduction of the Series 60 tractors New Holland have endeavoured to provide the complete package, offering the chance to choose from the

outstanding beneficial features available, supported by one of the leading dealer networks in the world which in turn is supported by New Holland's commitment to customer satisfaction. Do not just take our word for it, visit your local New Holland dealer and see for yourself.



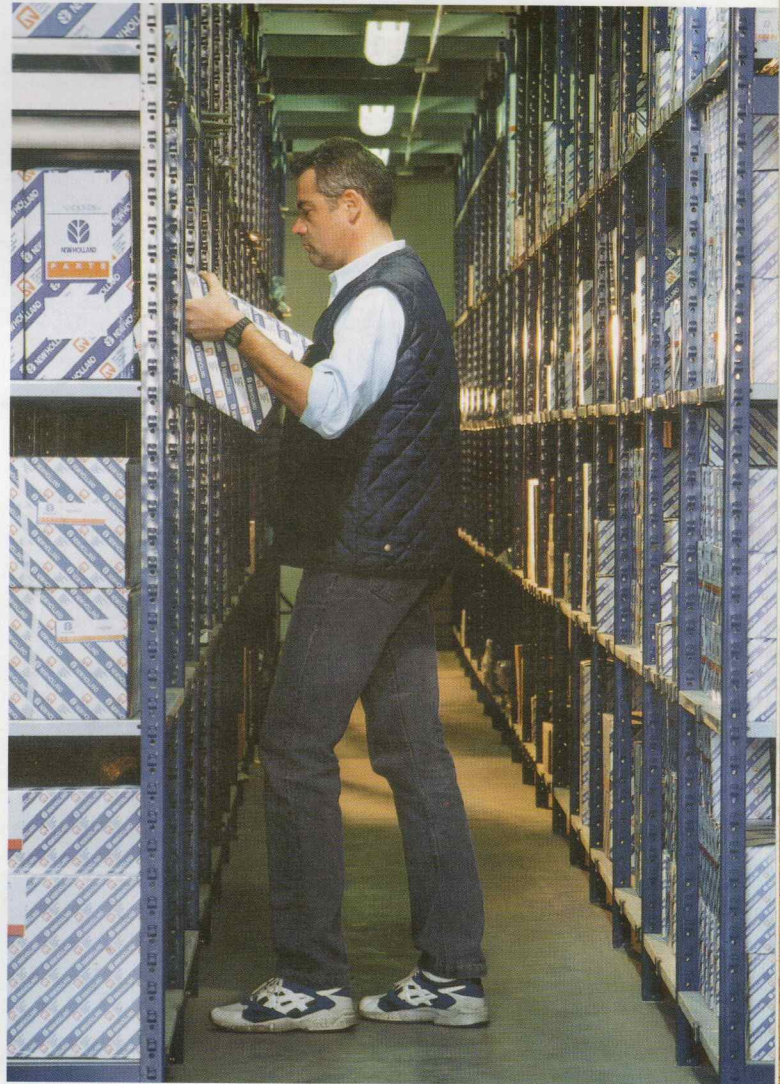
Series 60 tractors have serviceability to designed in. Accessibility leads the field.



New Holland's product support relies on our dealers. New Holland investments provide advanced training for dealership personnel.



Factory trained personnel provide the service and skill to maintain your productivity.

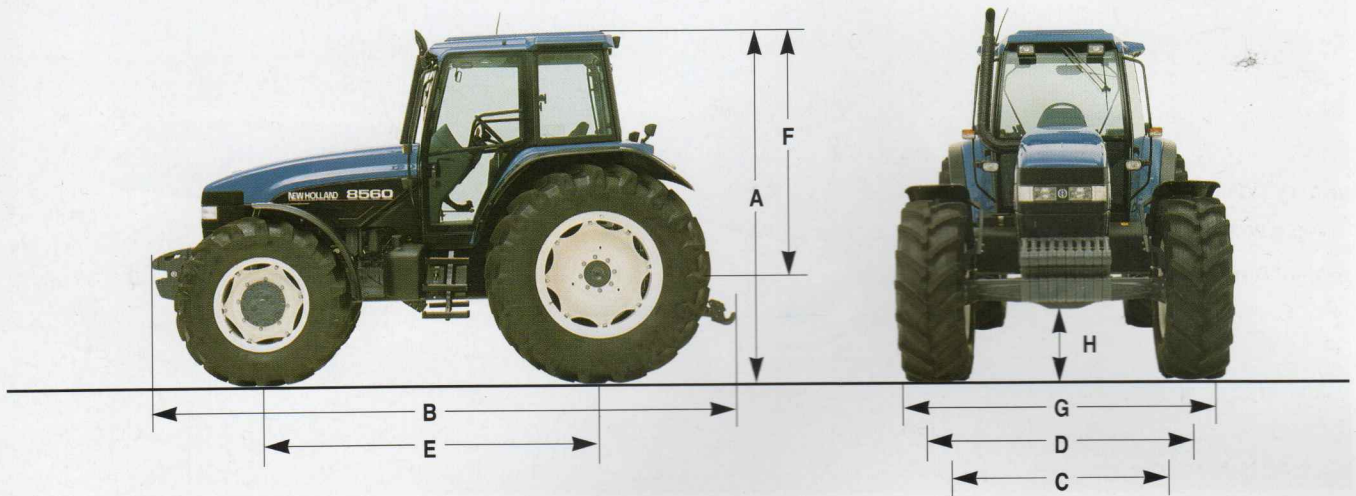


Advanced warehouses systems supply New Holland dealers replacement parts.



New Holland dealers are on hand to supply genuine replacement parts. Enabling Series 60 tractors to work at their most productive.

Dimensions and specifications



Dimensions (in mm)	8160	8260	8360	8560
A Height to top of cab	2780	2780	2808	2852
B Length - links horizontal	4615	4615	4643	4703
C Track width Front	1552 - 2269	1552 - 2269	1640 - 2359	1640 - 2359
D Track width Rear	1520 - 2304	1520 - 2304	1520 - 2304	1520 - 2304
E Wheelbase	2723	2723	2723	2723
F Rear axle to top of cab	2026	2026	2026	2026
G Minimum width	2012	2012	2012	2012
H Minimum ground clearance	274	274	302	346
Turning diameter	9220	9220	9310	9310
Standard tyres Front	380/70R28	380/70R28	420/70R28	16.9R28
Standard tyres Rear	480/70R38	480/70R38	520/70R38	20.8R38
Weight with cab (kg)	5250	5250	5250	5450



New Holland Series 60

8160

8260

8360

8560

Engine

	8160	8260	8360	8560
Model	New Holland	New Holland	New Holland	New Holland
	PowerStar	PowerStar	PowerStar	PowerStar
No. cylinders / aspiration	6 N.A.	6 N.A.	6 Turbo	6 Turbo
Displacement (cc)	7480	7480	7480	7480
Max. Power (kW/hp)	82/110	90/121	105/141	121/168
Power at rated speed (kW/hp)	74.6/100	85.8/115	100.7/135	119.3/160
Rated speed (rpm)	2200	2200	2200	2300
Max.torque @ rpm	432 @ 1400	468 @ 1400	612 @ 1350	670 @ 1500
Torque rise (%)	32	28	43	37
Constant power range (%)	24	18	30	30
Fuel capacity (l)	220 + 105	220 + 105	220 + 105	325

Transmission / Speed Range

Shuttle Command (a)	(kph)	16x16 / 1.5 - 30	16x16 / 1.5 - 30	16x16 / 1.5 - 30	-
(a) + Creeper	(kph)	32x32 / 0.23 - 30	32x32 / 0.23 - 30	32x32 / 0.23 - 30	-
(a) + Overdrive	(kph)	24x16 / 1.4 - 40	24x16 / 1.4 - 40	24x16 / 1.4 - 40	-
(a) + Overdrive + Creeper	(kph)	40x32 / 0.23 - 40	40x32 / 0.23 - 40	40x32 / 0.23 - 40	-
Dual Command (b)	(kph)	23x12 / 1.4 - 30	23x12 / 1.4 - 30	23x12 / 1.4 - 30	-
(b) + Creeper	(kph)	46x24 / 0.23 - 30	46x24 / 0.23 - 30	46x24 / 0.23 - 30	-
(b) 40	(kph)	24x12 / 1.8 - 40	24x12 / 1.8 - 40	24x12 / 1.8 - 40	-
(a) 40 + Creeper	(kph)	48x24 / 0.23 - 40	48x24 / 0.23 - 40	48x24 / 0.23 - 40	-
Range Command (c)	(kph)	17x6 / 2.1 - 30	17x6 / 2.1 - 30	17x6 / 2.1 - 30	17x6 / 2.1 - 30
(c) + Creeper	(kph)	30x12 / 0.35 - 30	30x12 / 0.35 - 30	30x12 / 0.35 - 30	30x12 / 0.35 - 30
(c) 40	(kph)	18x6 / 1.8 - 40	18x6 / 1.8 - 40	18x6 / 1.8 - 40	18x6 / 1.8 - 40
(c) 40 + Creeper	(kph)	31x12 / 0.35 - 40	31x12 / 0.35 - 40	31x12 / 0.35 - 40	31x12 / 0.35 - 40

Hydraulics

Open centre load sensing

Maximum flow (lpm)	53,1	53,1	53,1	-
Maximum pressure (Bar)	190	190	190	-

Closed centre load sensing

Maximum flow (lpm)	93,3	93,5	93,5	97,8
Maximum pressure (Bar)	190	190	190	190

Rear linkage capacity (kg)

Max. capacity links horizontal

0 Assist ram	4690	4690	NA	NA
1 Assist ram	6560	6560	6560	6560
2 Assist rams	NA	NA	8435	8435
Front linkage capacity (kg)	3270	3270	3270	3270

PTO

Maximum PTO power (hp/kW)	91 / 67.9	108 / 80.6	120 / 89.5	145 / 108.2
---------------------------	-----------	------------	------------	-------------



The data indicated in this folder are approximate. The models described here can be subjected to modifications without any notice by the manufacturer. The drawings and photos may refer to equipment that is either optional or intended for other countries. Please apply to our Sales Network for any further information. Published by External Communications New Holland.

Bts Adv. - Printed in Italy - 12/98 - Satiz SpA (Turin) - Cod. n. 80014/BR/INB

www.newholland.com

www.newholland.com/uk

AT YOUR OWN DEALERSHIP

