

 **ALLIS-CHALMERS**

5040

**40 TOUGH HORSES AT
A VERY TENDER PRICE.**

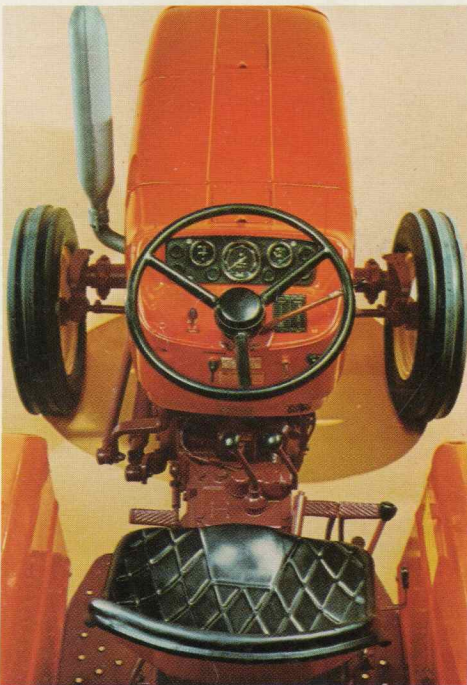


**FEATURING FULLY
INDEPENDENT PTO**

A nifty 8 or 12-speed transmission.

The 5040 comes equipped with a dual-range transmission that has eight forward speeds and two reverse.

Its forward speeds range from 1.5 to 15.1 mph. Third/fourth and seventh/eighth gears are fully synchronized. So you can shift on the roll between synchronized gears.

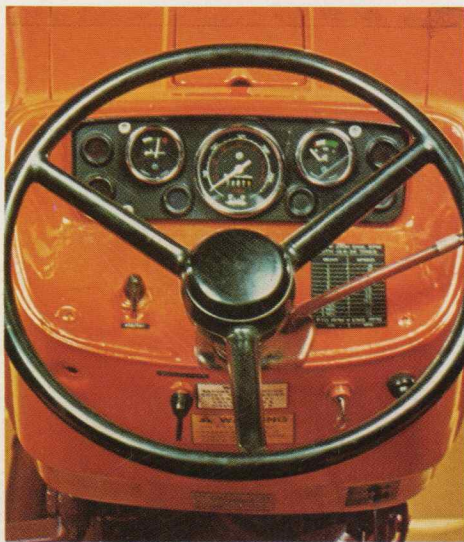


For specialized jobs, the 5040 is also available with an optional 12-speed transmission that has speeds below 1 mph and three reverse speeds.

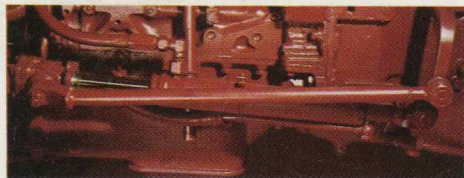
Its forward speeds range from .5 to 15.1 mph. Third/fourth, seventh/eighth and eleventh/twelfth gears are synchronized.

A big, eleven-inch dual clutch is standard. The transmission gear train is controlled by a foot pedal and the independent PTO by hand lever.

Standard features others call options.



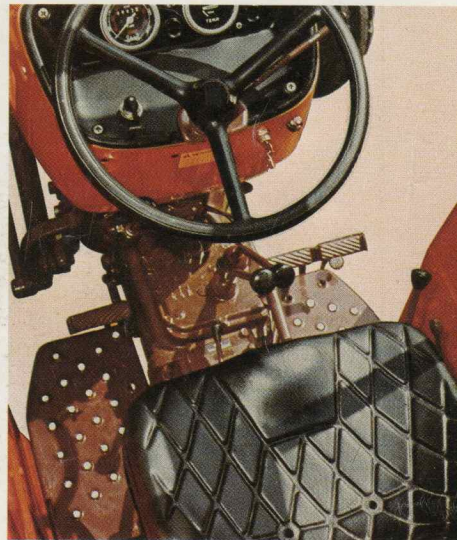
Power steering. With some tractors in the 40-horsepower class, power steering is an option. But it's standard equipment on the 5040. Also notice the 5040's complete instrumentation. Oil pressure gauge, alternator warning light, water temperature gauge, tachometer, hour meter, fuel gauge and oil pressure warning light.



Power Steering provides greater driving comfort and control.

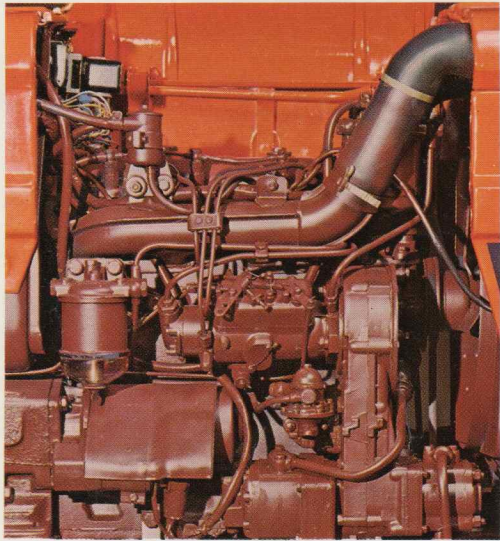
Fully Independent PTO. The 5040 8 and 12 speed tractor comes equipped with fully independent PTO. The 540 RPM PTO transforms raw tractor power into smooth, even torque, needed by many of today's rear mounted attachments. Because the PTO is fully independent, power is constant, even when the clutch pedal is depressed.

Convenient controls. Grouped right where you want them: PTO, shift lever, parking brake and remote hydraulic cylinder control. Also notice the comfortable, padded seat . . . adjusts to your most desirable position.

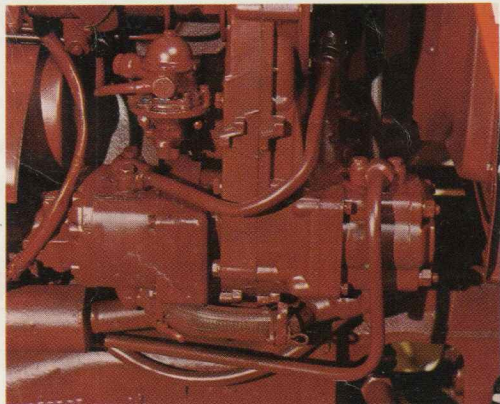


Foot throttle. Frees your hands for other operations. There's also a hand throttle to the right of the steering column.



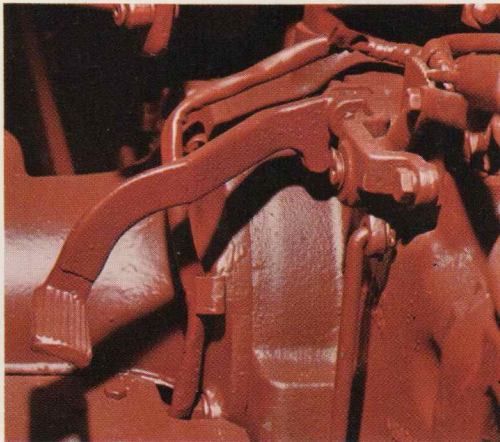


Thermostart. Makes cold weather starting a snap. When you turn the key, thermostart heater element warms the air before it enters the combustion chamber.

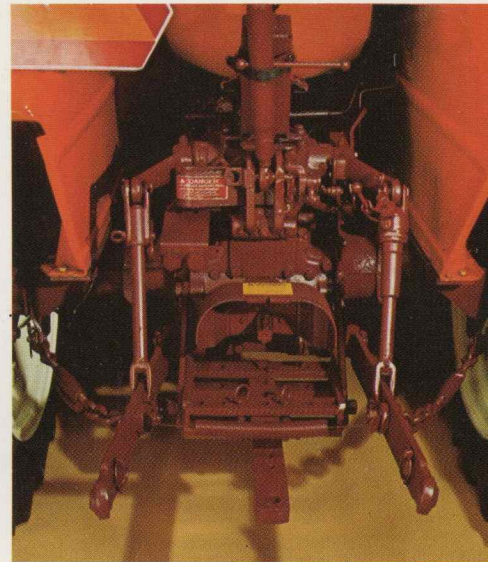
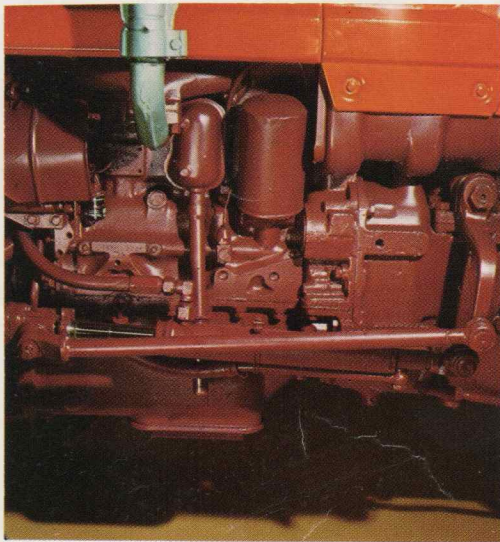


Direct-drive hydraulic pump. Driven from gear train off the crankshaft. Puts out 6.23 gpm.

Differential lock. This foot-operated standard feature is great for pulling you out of soft spots.



Full flow oil system. Features throw-away filter.



Cat. II — I 3-point hitch. Controlled by lever at right of the driver's seat. Also features 3-point hitch sway chains and swinging drawbar. The PTO is an independent 540 rpm. And there's a double acting remote valve with break-away couplers that couple and uncouple under pressure.

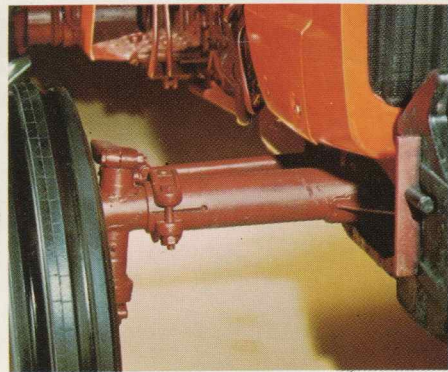


PHOTOGRAPHY BY
 PHILIP KENTUCKY 6386
 HIGHWAY 24
 CROFTON EQUIPMENT, INC.

A couple of options, too.

Maintenance? It's like sittin' on a fence.

Adjustable front axle. Gives the 5040 versatility for various row widths.



Safety. SMV emblem, two rear reflectors, two flashing warning lights, safety start switches, two dual-beam headlights, rear work light and tail-light are standard equipment on the 5040.

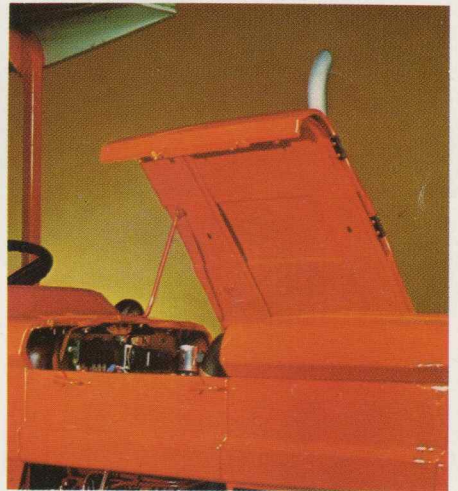


More traction and stability. You can order a front weight carrier with your 5040. Five front suitcase weights (75 lbs. each). With carrier gives you approximately 420 lbs. of front-end stability. You can also order rear wheel weights (125 lbs. each).



More safety. Optional protective frame with seat belt and canopy is also available. Meets current OSHA standards for roll-over protection.

Flip-up hood compartments. Makes it easy to get at engine, radiator... to fuel up. Gives tractor clean lines, neat look.



Easy-off front grill. Makes it easy to service battery and dry-type air cleaner.



The tough economy- minded tractor.

While most prices seem to keep going sky-high, Allis-Chalmers has found a way to bring your buck back down to earth.

The new 5040.

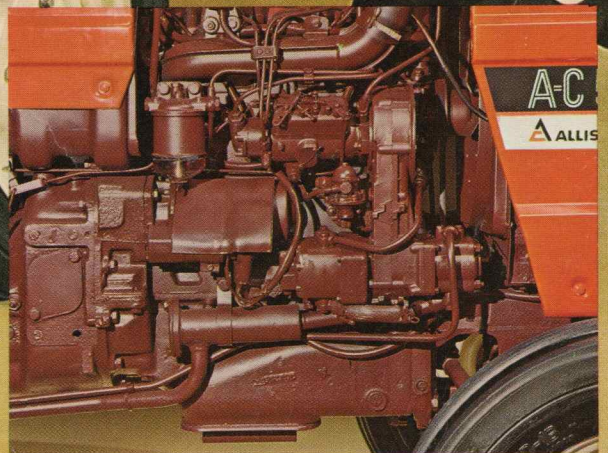
A tough 40-horsepower* tractor that comes to you with a very low price tag... a very small fuel appetite.

Yet, even with its budget price tag, the new 5040 is no stripped-down tractor. In fact, it offers you many standard features others call options.

And knowing you're backed by the Allis-Chalmers warranty and prompt, reliable dealer service means a lot, too.

So, if you've had it with today's sky-high prices, read on and find out more about the new 5040.

Like that famous quote says: "The buck stops here!"



The 5040 gets its "tough" from a 142.8 cubic inch, direct injection diesel engine. This 3-cylinder workhorse has a rated engine speed of 2600 rpm putting out 40 PTO horsepower. It's a dry-sleeve engine featuring a 4-main-bearing crankshaft for more rigidity and longer life.

*Manufacturer's maximum observed PTO horsepower at rated engine speed.

5040 TRACTOR SPECIFICATIONS



Model 5040 Tractor With 8-Speed Transmission

Engine

PTO Horsepower	40 (29.8 kW)**
Type	Direct Injection Diesel
Rated Engine Speed — RPM	2600
Number of Cylinders	3
Bore	3.74" (95 mm)
Stroke	4.33" (110 mm)
Displacement — CID	142.8 cubic inches (2340 cm ³)
Cylinder Liners	Dry — Replaceable
Number of Main Bearings	4
Compression Ratio	17:1
Operating Range — RPM	600-2850

Power Train

Clutch Type	Dual — Dry
Clutch Diameter	11" (279 mm)
Transmission Type	Sliding Gear/Constant Mesh
Number of Speeds	8—Forward; 2—Reverse (Synchronized 3-4, 7-8)

Brake Type	Mechanical Band
PTO Type	Independent — 540 RPM
Differential Lock	Mechanical

Hydraulics

Type of System	Open Center
Pump	Gear
Rated Capacity — GPM	6.23 (23.6 litre/min)
3-Point Hitch	Cat. II — I
Draft Sensing	Upper Link
Remote Valve	Double-Acting
Power Steering	Power Assist

Electrical

Battery	12-Volt
Alternator	30-Amp

Tires

Front	6.00-16
Rear	13.6-28 NPA
Wheelbase	75.5" (1918 mm)
Overall Length	117.3" (2979 mm)
Overall Width	61.0" (1549 mm)
Turning Radius W/Brake	111.2" (2824 mm)
W/O Brake	125.7" (3193 mm)
Clearance Front Axle	18.5" (470 mm)
Clearance Rear Axle	20.0" (508 mm)
Height:	
Top of Hood	53.0" (1346 mm)
Top of Steering Wheel	58.6" (1488 mm)
Top of Exhaust Stack	76.5" (1943 mm)
Approx. Shipping Weight—Lbs.	3850 (1746 kg)

Wheel Tread

Front —	
Minimum Wheels Dished In	51" (1295 mm)
Maximum Wheels Dished Out	78" (1981 mm)
Rear —	
Minimum Wheels Dished In	52" (1321 mm)
Maximum Wheels Dished Out	75" (1905 mm)

Capacities

Cooling System	14 Qts. (13.2 litres)
Fuel Tank	14.25 Gal. (54.0 litres)
Crankcase — Oil Change Only	7.3 Qts. (6.9 litres)
Crankcase — With Oil and	
Filter Change	8.3 Qts. (7.9 litres)
Transmission & Hydraulic System	19 Qts. (18.0 litres)
Final Drives	1.75 Each (1.7 litres)

Model 5040 Tractor With 12-Speed Transmission

Same as Model 5040 Tractor With 8-Speed Transmission EXCEPT:
 Number of Speeds 12—Forward; 3—Reverse
 Approx. Shipping Weight—Lbs. 3920 (1778 kg)

Travel Speed — MPH at Rated Engine RPM (2600) With 13.6-28
 Rear Tires

8-Speed		12-Speed		
MPH	km/h	MPH	km/h	
1. 1.5	2.4	6. 8.0	12.8	1st creeper5 (0.8 km/h)
2. 2.2	3.6	7. 11.7*	18.8*	2nd creeper7 (1.2 km/h)
3. 3.2*	5.2*	8. 15.1*	24.2*	3rd creeper 1.0 (1.7 km/h)
4. 4.2*	6.7*	R1 2.1	3.4	4th creeper 1.4 (2.2 km/h)
5. 5.1	8.2	R2 7.6	12.2	Reverse creeper .07 (1.2 km/h)

*3-4 & 7-8 Synchronized

ALL OTHER SPEEDS SAME AS 8-SPEED TRANSMISSION

Standard Equipment

- Engine — 142.8 CID Diesel (2340 cm³)
- Dry-Type Air Cleaner
- Thermostart Engine Heater
- 12-Volt Battery
- Vertical Muffler
- Safety Start Switches
- Hand and Foot Accelerator
- Air Filter Indicator
- Instrumentation — Warning Light System for Alternator and Engine Oil Pressure; Water Temperature and Fuel Gauges; Hour Meter and Tachometer
- Dual Clutch
- PTO — Independent 540 RPM
- Differential Lock
- Category II — I 3-Point Hitch
- 3-Point Hitch Sway Chains
- Hydraulic Draft and Position Control
- Swinging Drawbar
- Power Steering
- Adjustable Front Axle
- Flip-up Hood Servicing Compartments
- Two Dual-Beam Headlights
- Rear Work Light, Taillight
- Two Flashing Warning Lights
- SMV Emblem, Two Rear Reflectors
- Adjustable Deluxe Seat
- One Double-Acting Remote Valve with Breakaway Couplers
- 8—Forward; 2—Reverse Speeds
- 6.00-16 F2 Front Tires
- 13.6-28 R1 Rear Tires

Optional Equipment

- ROPS Frame with Seat Belt
- Canopy
- Front Weight Carrier
- Suitcase Front Weights — 75 Lbs. (34.0 kg) Each
- Rear Wheel Weights — 125 Lbs. (56.7 kg) Each

**Manufacturer's maximum observed PTO horsepower at rated engine speed.
 †5040 8 & 12 speed tractor not available for sale in Neb.

The information contained herein is general in nature and is not intended for specific application purposes. Allis-Chalmers reserves the right to make changes in specifications shown herein or add improvements at any time without notice or obligation.

ALLIS-CHALMERS
 AGRICULTURAL EQUIPMENT

Milwaukee, Wisconsin 53201

3,00

CRABTREE EQUIPMENT, INC.
 HIGHWAY 54
 PHILPOT, KENTUCKY 42366
 PHONE (502) 729-4206