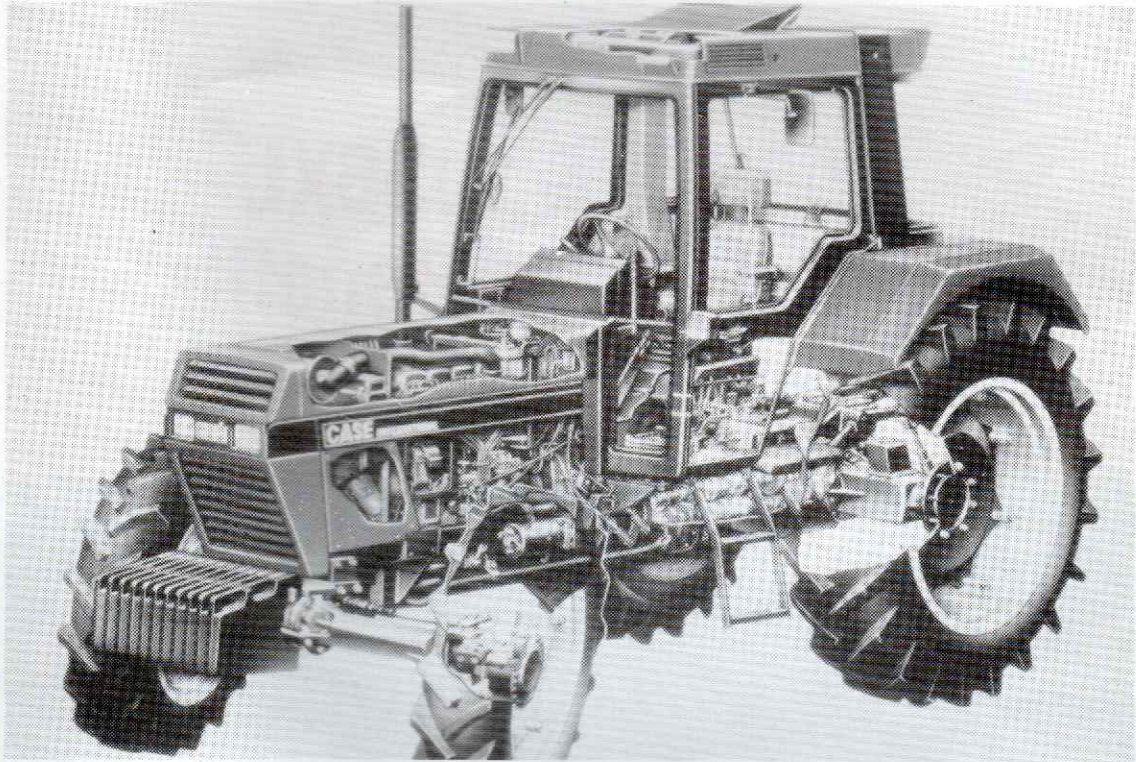


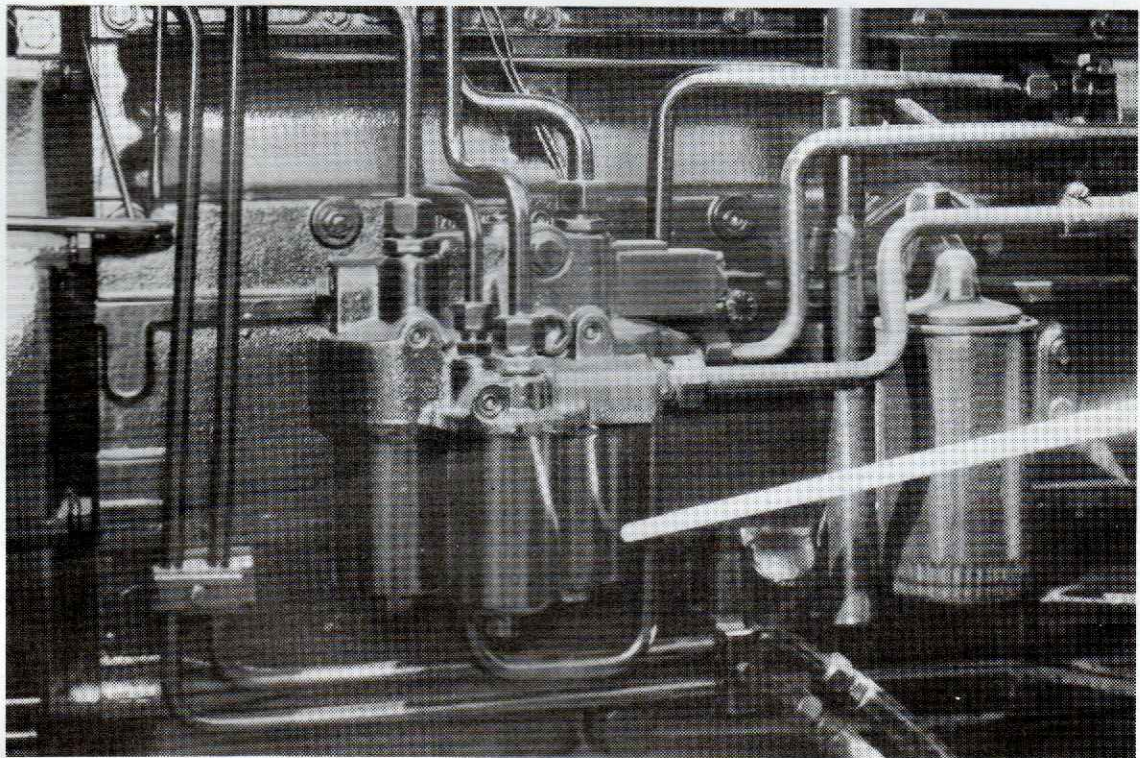
Confidential

956XL & 1056XL Features and Benefits





1. Rugged 6 cylinder tractor motor. Bosch V.A. fuel injection pump.



2. Combi-filter unit indicated. Heat exchanger to the right.

Introduction

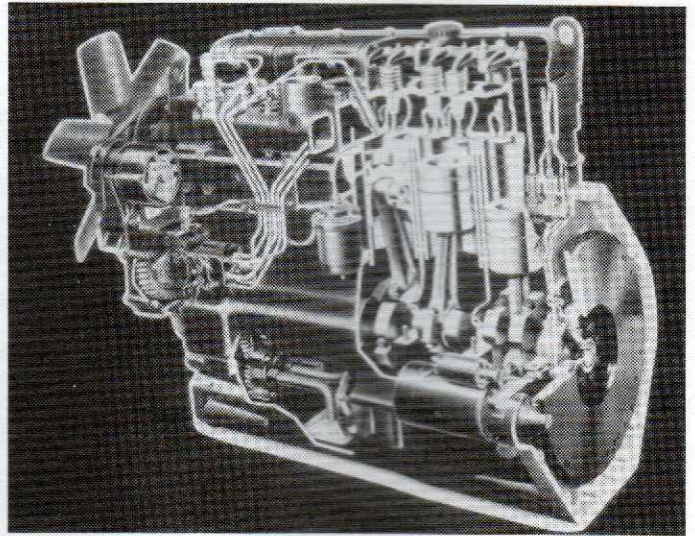
The 56 Series hosts many proven design features which will give greater output and increased efficiency in all applications. The following text will highlight many features and benefits which can be relayed to your customers so as they may appreciate these tractors.

The New 56XL Series Tractors

The 56XL Series comprises the 956XL and 1056XL tractor models, both of which are available in two wheel drive or M.F.D. versions. All models feature the luxury XL Control Centre (non-cab models available on indent).

Engines

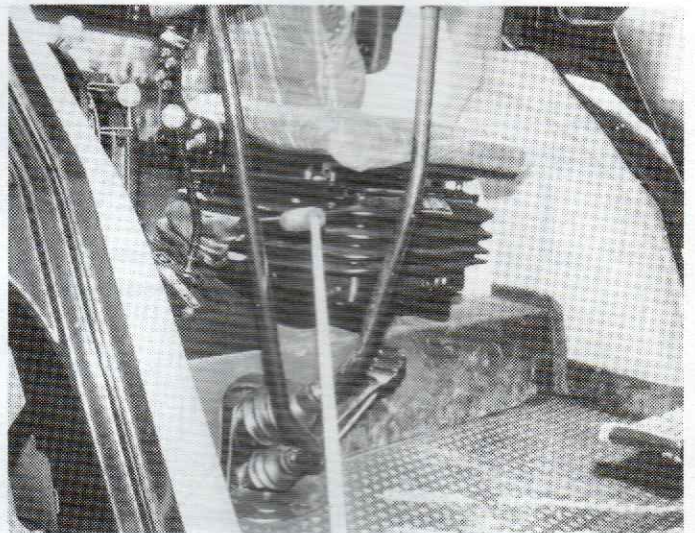
Both the 956XL and 1056XL tractors utilise the well proven and reliable D358 German built engine. This engine has been de-rated in these models so correct engine performance will be obtained in all areas of operation. This D358 engine is a smooth running six cylinder, direct injection, water cooled diesel engine. Power output at the PTO is an impressive 67 kW (89 hp) on the 956XL and 74 kW (98 hp) on the 1056XL.



Feature

Benefit

- | | |
|--------------------------------------|--|
| ★ Excellent Torque Rise at a Low RPM | - will pull through all those tough spots. Even at low revs. |
| ★ High Performance Starter Motor | - excellent starting at low temperature. |
| ★ Coolant Conditioner Fitted | - greater cooling capacity and longer component life. |
| | - Reduced risk of corrosion and system Blockage. |
| ★ Large Capacity Air Cleaner | - Long Service Life. |
| ★ VA Bosch Fuel Injection Pump | - Greater Efficiency. |
| | - Greater max torque |
| | - Excellent fuel efficiency |



Feature: Gear lever layout. Speed reducer indicated.

Transmissions

These well proven 56XL Series Transmissions have had many years of service in Europe where they operate under heavy draft loads. During this time they have proven to have unsurpassed reliability and excellent performance.

The 956XL and 1056XL tractors utilise a 16 forward and 8 reverse speed, synchromesh transmission provided by four synchromesh ratios, and a range lever giving high, low and reverse ranges. In addition a standard speed reducer gives a 20% reduction in each gear. All transmission levers are grouped to the right of the operator's seat.

A "Super-Creep" transmission is an indent option - this will provide a 70% reduction with two speeds under 1 km/h.

A "Step-Up" optional transmission, an indent option, provides 40 km/h top speed. (Extra cost M.F.D. XL models only).

In the past, tractor design has not concentrated in the area of transmission efficiency. Much power can be absorbed through an inefficient transmission design where a high engine power is produced, but not put to work on the ground or power take off.



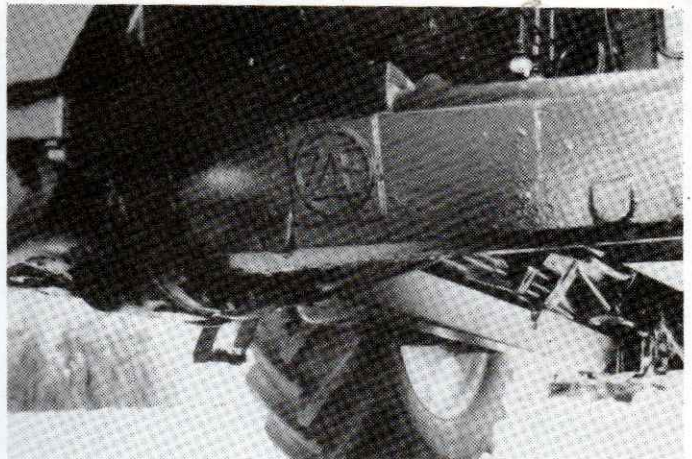
Diff. lock indicated. Note roomy, flat floor.

The 56 Series of tractors has an extremely efficient transmission design which has proven exceptional in transmitting as much power as possible to the wheels.

Efficiency of the 56XL Series transmission has also been increased by changing from splash to force feed lubrication and a reduction in the volume of transmission lubricant to 28 Litres on two wheel drive 56XL tractors, and 31 Litres on four wheel drive 56XL tractors. This results in increased transmission efficiency and owners will benefit from reduced service costs.

In changing from splash feed to force feed lubrication, an oil filter, oil pump and pipes have been introduced into the transmission. The cross section shows the location of the pump and transmission lubrication circuit.

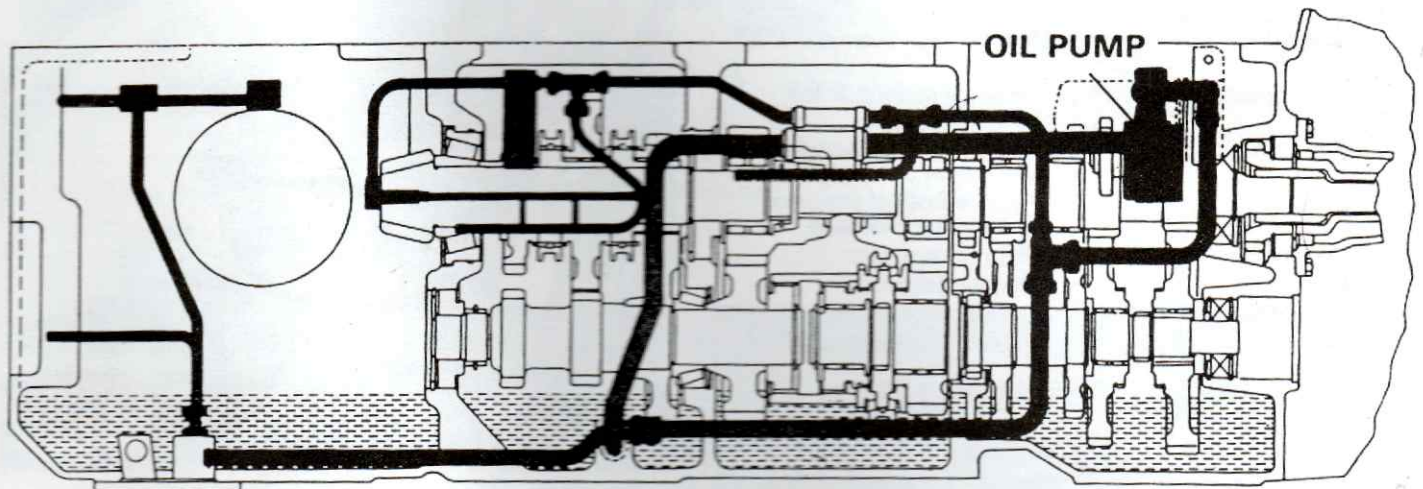
Case IH exclusive Hy-Tran® is used as the lubricant in this transmission and along with the pressure feed system will give optimum performance, lubrication and life. Increased transmission efficiency results in greater output and reduced fuel consumption.



Feature: Extremely clean under side on M.F.D.

Drive shaft shield is standard.

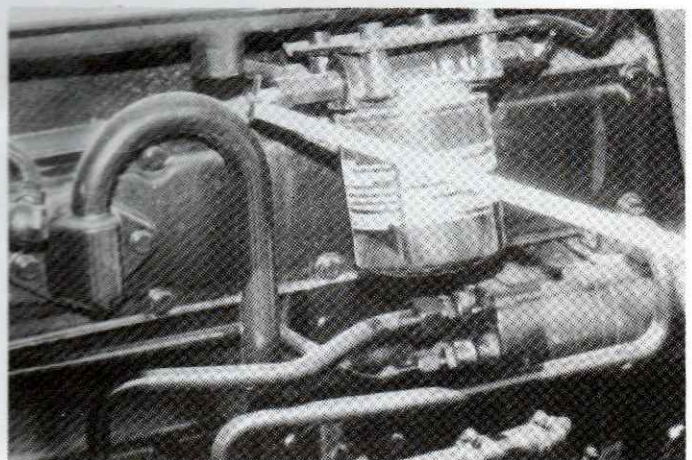
Lubrication Circuit of 56 Series Transmission



The schematic on the following page, shows the transmission of the 56XL Series in detail. Areas of high strength which are incorporated into the Australian/New Zealand tractors over and above the European models are highlighted. These changes give us the most reliable transmission available in these models anywhere in the world.

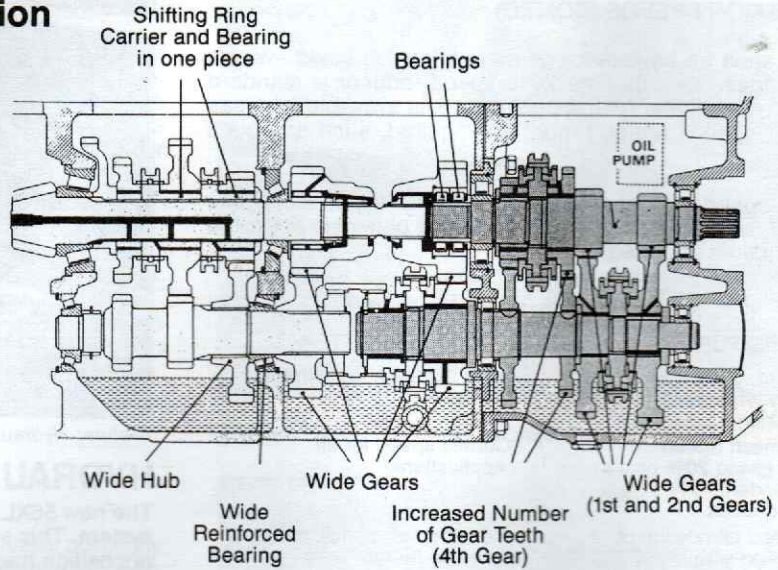
The basic design of these transmissions is as follows:

- | | |
|--|-------------------------------|
| 1. Front Section Including Input Shaft | - Speed Transmission. |
| 2. Centre Section | - 20% (or 70%) Speed Reducer. |
| 3. Rear Section Including Bevel Pinion | - Range Transmission. |



Feature: Water taps each side of filter. Clean filter changing.

The New 56 Series Transmission



NOT SHOWN ON THE DRAWING

- Change of Seal so that Brakes and transmission run in same oil
- Wider P.T.O. Gears
- Reinforced P.T.O. Bearings

Transmission Speeds:

Transmission ratios for the 956XL and 1056XL are identical in both two and four wheel drive versions. However, maximum speeds in each ratio are higher on the 1056XL due to the higher rated governed engine speed of 2300 rpm on the 1056XL.

956XL

GROUND SPEEDS

956XL - W/23.1 x 30 Tyres @ 2200 rpm - No Allowance for Tyre Slippage

Gear	Direct		Std. Speed Reducer - 20%		Optional Speed Reducer - 70%	
	km/h	mph	km/h	mph	km/h	mph
1	2.25	1.4	1.77	1.1	.67	.42
2	3.05	1.9	2.57	1.6	.91	.57
3	4.82	3.0*	3.86	2.4	1.44	.90
4	7.24	4.5*	5.95	3.7*	2.25	1.4
5	8.69	5.4*	7.08	4.4*	2.57	1.6
6	11.90	7.4*	9.65	6.0*	3.54	2.2
7	18.50	11.5	14.96	9.3	5.63	3.5
8	27.84	17.3	22.85	14.2	8.36	5.2

1056XL

GROUND SPEEDS

1056XL - W/23.1 x 34 Tyres @ 2300 rpm - No Allowance for Tyre Slippage

Gear	Direct		Std. Speed Reducer - 20%		Optional Speed Reducer - 70%	
	km/h	mph	km/h	mph	km/h	mph
1	2.41	1.5	2.09	1.3	.72	.45
2	3.37	2.1	2.73	1.7	1.01	.63
3	5.31	3.3*	4.50	2.8*	1.59	.99
4	8.04	5.0*	6.59	4.1*	2.41	1.5
5	9.65	6.0*	7.72	4.8*	2.89	1.8
6	13.19	8.2	10.94	6.8*	4.02	2.5
7	20.43	12.7	16.89	10.5	6.11	3.8
8	31.05	19.3	25.26	15.7	9.33	5.8

*NOTE THE NUMBER OF USEFUL GROUND SPEEDS

There is also an optional (indent only), STEP UP transmission available for M.F.D. XL Models at extra cost. Top speed is 40 km/h.

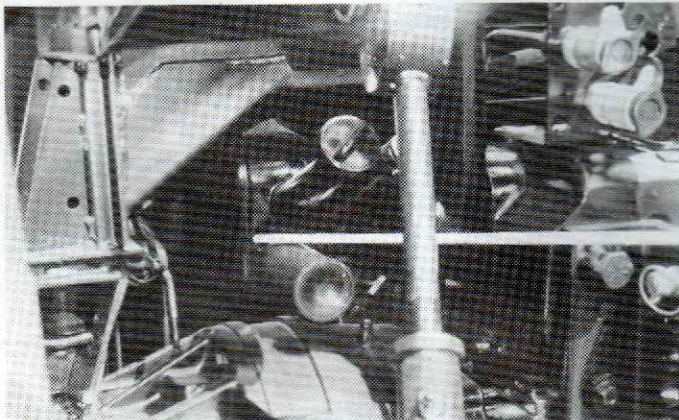
TRANSMISSION SPEEDS (CONT.D)

As can be seen we have every gear speed which could ever be needed in these models. The 20% speed reducer is standard equipment. An optional 70% speed reducer is available for areas where gear speeds under 1 mph are required, such as potato farming etc.

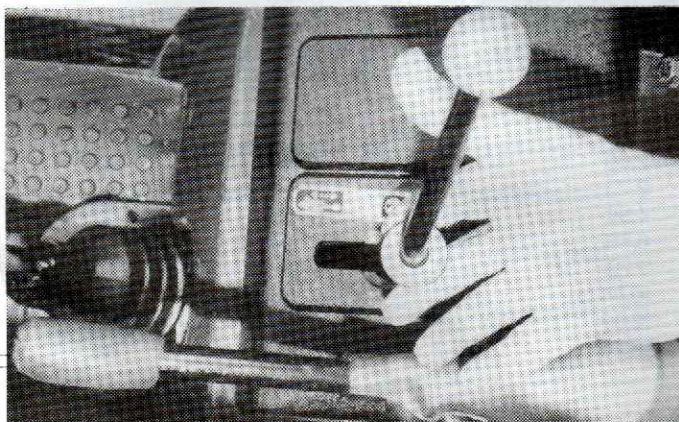
In this 70% speed reducer optional transmission the direct speeds are normal, with only extra reduction being obtained when the speed reducer is operated.

56XL SERIES TRANSMISSION FEATURES

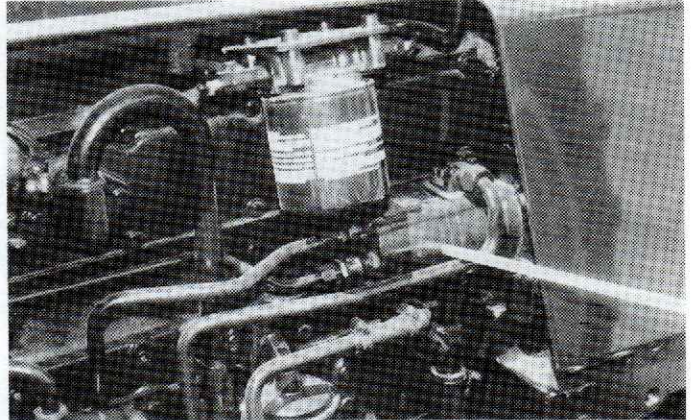
FEATURE	BENEFIT
★ 16 Forward, 8 Reverse Speed Synchronmesh Transmission	- Even spread of transmission speeds.
★ Synchronmesh Speed Reducer giving 20% or optional indent 70% speed reduction.	- Correct speed for all applications.
★ Forced feed lubrication of transmission with independent oil pump.	- Increased efficiency, more useable power.
★ Gears run in minimal quantity of low viscosity Hy-Tran [®] for reduced drag.	- Definatly NOT hill sensitive.
★ Robust PTO Drive	- Increased efficiency, reduced fuel consumption, more useable power.
★ 40 km/h Transmission M.F.D. XL models (optional indent)	- Designed for high power output.
	- Good road speed for trailer and haul-out work.



Feature: Separate hydraulic reservoir. Avoids transmission contamination.



Remote valve control. Note "Safety Catch". Well located for ease of operation.



Feature: Hydraulic pump external, easily accessible

HYDRAULICS:

The new 56XL Series tractors have a high specification hydraulic system. This system has many features which hold it well above opposition tractors. The basic system consists of three areas.

1. The Auxiliary Valve Supply
2. Three Point Linkage
3. Tractor System Supply

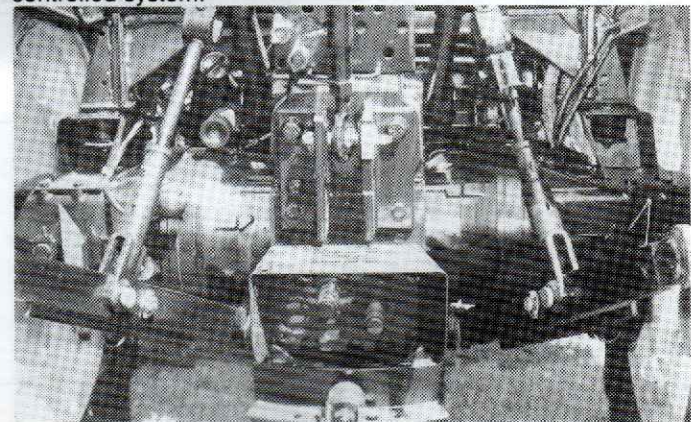
Oil is held in a completely separate 20 Litre reservoir on the Left Hand side of the tractor. By having a separate reservoir we eliminate the entry of dirt and dust through the hydraulic remote valves into the transmission housing. This of course prevents the possibility of transmission failures due to foreign material. Another major advantage is that foreign type oils, which often are found in external cylinders, are not able to contaminate transmission oil.

The 956XL and 1056XL have an engine mounted dual hydraulic pump. The front section of the pump provides oil for the hydrostatic steering, whilst the rear section provides oil for all other functions. Pump output is a massive 57 Litres per minute (12.5 Imp. Gals.) on the 956XL and 60 Litres per minute (13.2 Imp. Gals.) on the 1056XL.

As mentioned these tractors incorporate full hydrostatic power steering as standard equipment. Power assisted wet disc brakes are also standard equipment.

Working pressure of this hydraulic system is 161.7 bar (2346 P.S.I.). Both 956XL and 1056XL tractors offer two full breakaway, couple under pressure remote couplings. Male couplings are supplied standard with each tractor.

These 56XL tractors are designed so as they cater for all types of farming demands, both drawbar broadacre work and hitch multi-purpose farming. The 56XL tractors have a new type of three point linkage, or hitch system called —SENS-O-DRAULIC—. This system offers enormous advantages over ANY other mechanically controlled system.



Features: Sturdy 3PL arms. Roller D/Bar standard.

WHAT IS SENS-O-DRAULIC?

Sens-O-Draulic is an automatic all hydraulic adjustment of the lift functions over the hitch system, eliminating all mechanical linkages and is a unique feature developed by CASE IH. The simplification of the conventional system allows more accurate control of the implement with low lever effort, gentle and progressive action for true "finger-tip" control.

Better Efficiency of Draft Control

The main controls are grouped conveniently at the operator's right. They consist of:

- a mode selector giving priority either to the draft control or to the position control, plus possibility of combining draft and position control.
- a setting lever for both draft and position controls.
- a main control lever.
- a safety latch to be used during transport.

Greater Productivity

The use of the hydraulic linkage system ensures greater accuracy and sensitivity of the implement. Therefore the Sens-O-Draulic system ensures that you are able to maintain, and return to, the best setting according to the work and soil conditions, even while giving priority to the position control, the Sens-O-Draulic system enables the operator to maintain a constant and efficient draft control setting.

These unique features give you better use of power in all conditions and significantly improve the productivity of the tractor.

Operator's Comfort and Safety

The effortless control of the "all hydraulic" system, and the sensitivity of operation are just two examples of the operating convenience afforded by the Sens-O-Draulic system. The auxiliary position control is located on the right hand mudguard, which allows the operator to control easily and quickly the height of the lift arms, and to adjust them accurately for attaching an implement from a safe and remote position.

Reduced Operation Costs

Add operator's comfort and safety of work to the energy savings obtained with an improved and constant, working depth control, and you see how much the Sens-O-Draulic system contributes to the improved productivity of these new CASE IH models, with a significant saving in operating costs.

1. Setting Control Lever

The setting of this lever selects either the working depth in relation with the draft load, or the height of the implement.

2. Mode Selector

This is used for selecting the mode of operation in draft control, position control, or combined control. When in combined control, full draft control is obtained while position control sensitivity is greatly reduced. When the selector is turned toward either function, draft or position control sensitivity will increase progressively according to the direction in which the selector is moved.

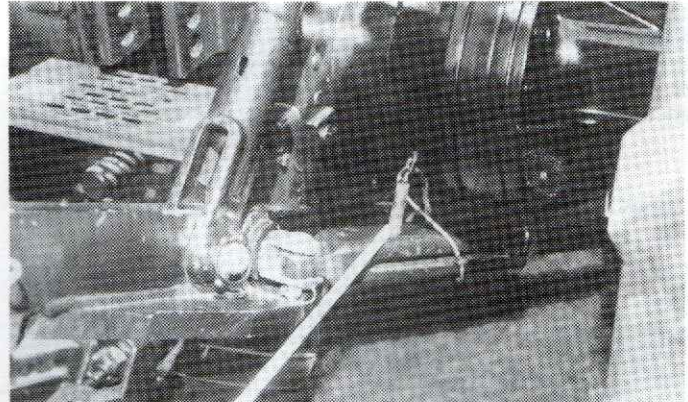
3. Main Control Lever

With the designed working depth having been selected by the adjustment of the setting control lever (1), the main control lever will control the following functions: fast raise, slow raise, lower and float control.

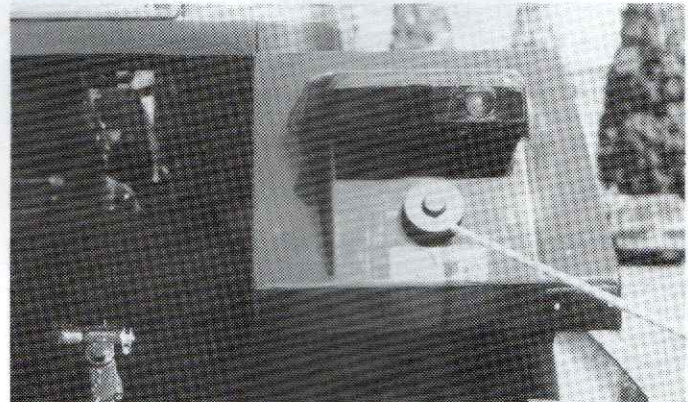
4. Safety Lock

This enables safe transport with implement. With mode selector set in position control, engaging the safety lock will restrict all movements of the main control lever and prevent any inadvertant move to "lower" during transport.

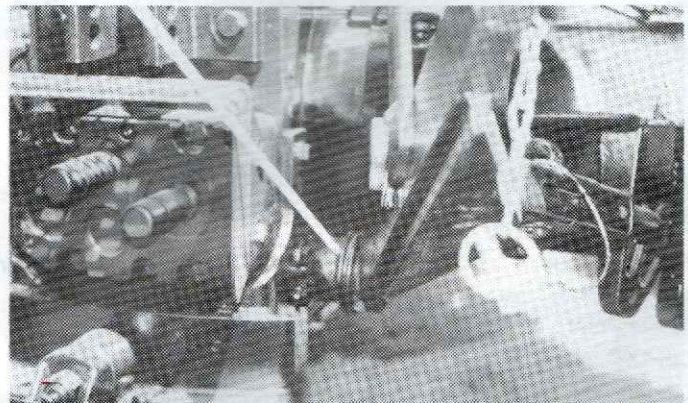
5-6. Remote Valve Control Levers.



Feature: Robust telescopic stabiliser bars.



Feature: Outside 3PL control. (Valve not cable).



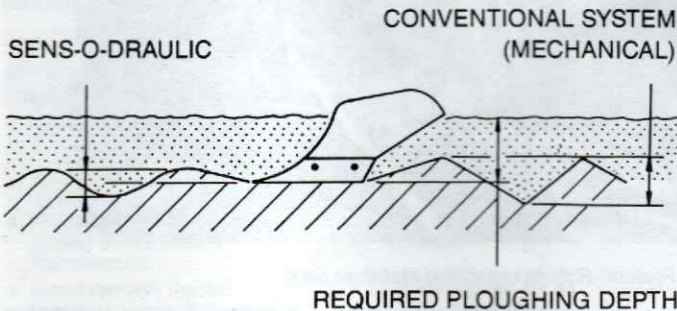
Lower link sensing.



Operation of Sens-O-Draulic. See text on left.

Exterior Control

A remote control dial is mounted on the right hand mudguard as illustrated below. This allows the three point linkage to be raised or lowered from outside of the control centre when coupling or uncoupling implements.



REQUIRED PLOUGHING DEPTH

As shown, tractors equipped with the exclusive Sens-O-Draulic system used in variable soil conditions produce a reduced amplification of the implement in comparison with the conventional mechanism type. This occurs due to the higher sensitivity and accuracy produced by an all hydraulically operated system.

Lift Capacity

Lift capacity at the rear linkage of 956XL and 1056XL tractors is a massive 4160 kg (9171 lbs), a greater lift capacity than many higher horsepower competitive tractors. 56XL tractors have the capacity to lift the heaviest fully mounted implements with ease. A lowering speed control is provided for smooth lowering of heavy three point linkage mounted equipment.

Brakes

56XL tractors have self-adjusting, self-equalizing wet disc brakes for increased safety and reduced maintenance. The hydraulically operated brakes are power boosted for safe, reliable braking with minimal pedal effort.

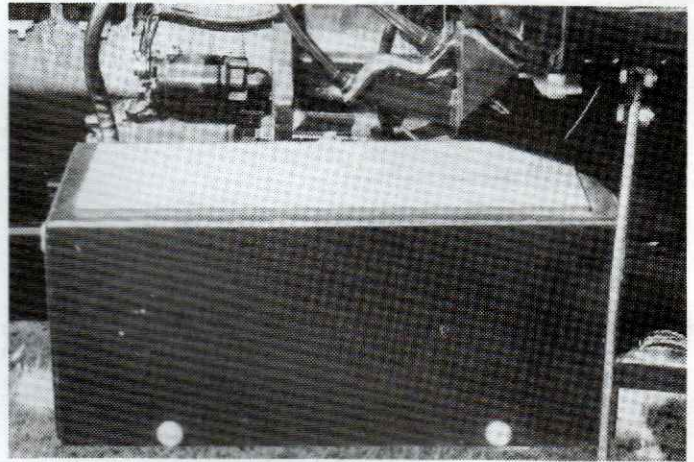
HYDRAULIC SPECIFICATIONS

HYDRAULIC DATA

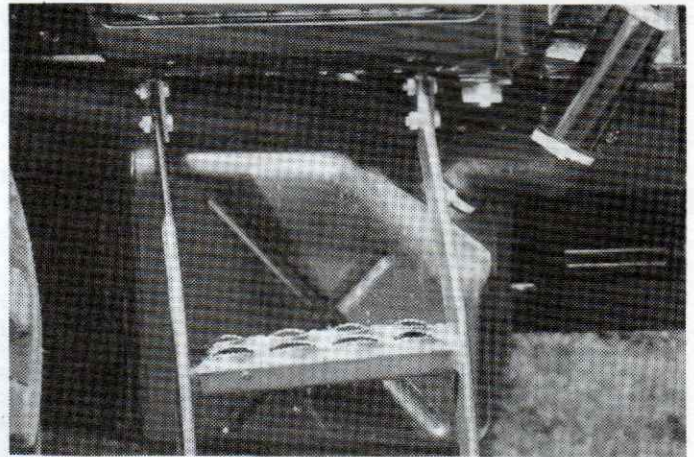
	956XL	1056XL
Reservoir Capacity	20 Litres (4.5 gals.)	20 Litres (4.5 gals.)
Pump Output	57 L/min (12.5 gal/min)	60 L/min (13.2 gal/min)
Working Pressure	2346 PSI	2346 PSI
Three Point Linkage Type	Cat. 2	Cat. 2
Lift Capacities (@ Linkage Ends)	4160 kg (9171 lbs)	4160 kg (9171 lbs)
External Position Control	Standard	Standard
Lowering Speed Control	Standard	Standard

56XL HYDRAULIC FEATURES

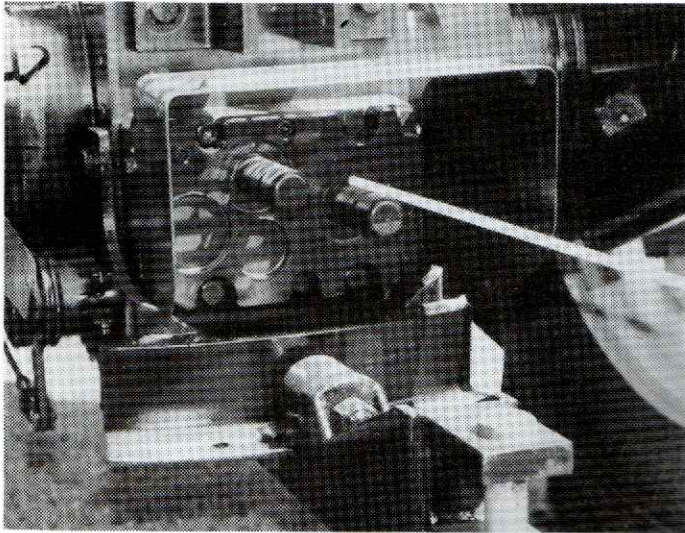
- | FEATURE | BENEFIT |
|--|--|
| ★ Large capacity auxiliary hydraulic oil reservoir of 20 Litres. | - Adequate supply for all hydraulic services. |
| ★ Engine mounted dual hydraulic pump. | - Easy accessibility. |
| ★ High lift capacity at link ends. | - Lifts heaviest fully mounted equipment with ease. |
| ★ External position control lever. | - Ease of attachment of all type of implements. |
| ★ Two double acting breakaway auxiliary valves standard. | - Complete specifications. |
| ★ Hydrostatic power steering. | - Positive finger tip control. |
| ★ Power assisted disc brakes. | - Full, positive, reliable braking. |
| ★ Sens-O-Draulic. | - THE BEST SYSTEM ON THE MARKET TODAY IN UNDER 75 kW TRACTORS. |



Feature: Good battery access.



Feature: External easily accessible fuel tank.



Dual shaft P.T.O.

Power Take Off:

The new 56XL Series tractors have a well proven independent, dual speed PTO with two output shafts, a six spline 540 rpm shaft and a twenty one spline 1000 rpm shaft.

The PTO drive is transmitted via an independent hand operated dual clutch. The clutch lever is situated to the left of the instrument console and drive is selected by a separate lever to the rear of the operator's seat.

To operate, the hand clutch lever is moved towards the operator and then the engagement lever is shifted into operation. The hand clutch lever is then released giving a gentle modulated engagement of the PTO driven implement.

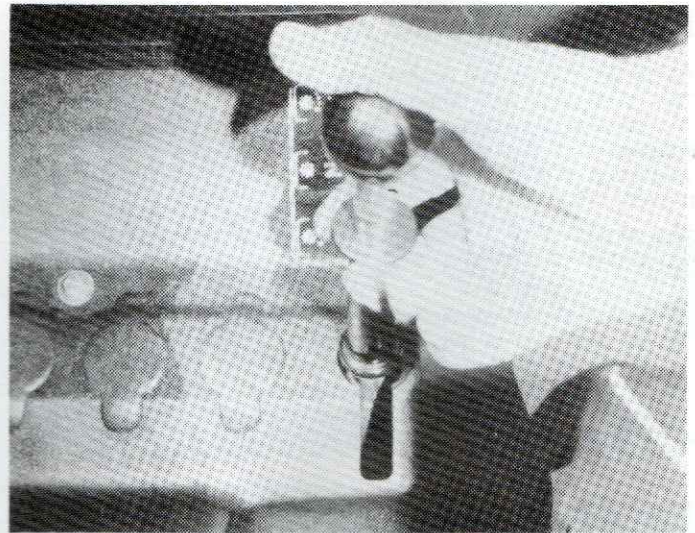
This PTO is designed for European conditions where power take off work is a major part of tractor use. Due to this well proven, over designed system it will capably handle all tough Australian conditions.

PTO PERFORMANCE AT RATED ENGINE SPEED:

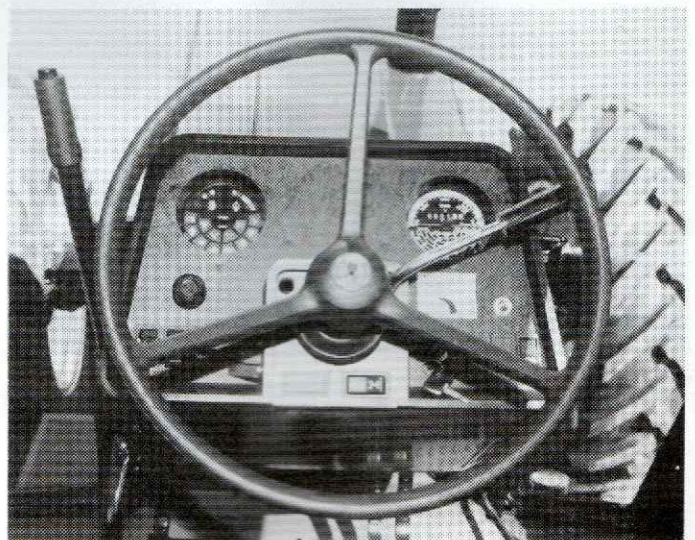
956XL	—	67 kW (89 hp)
1056XL	—	74 kW (98 hp)

56XL Series PTO Features

FEATURE	BENEFITS
★ Independent dual speed PTO with two output shafts	— Versatility, ease of operation
★ High power output through robust drive with minimal losses.	— Efficient, reliable PTO drive



P.T.O. mode engagement. Note "Safety Catch".



P.T.O. Clutch (top left). Good "feathering" capability.



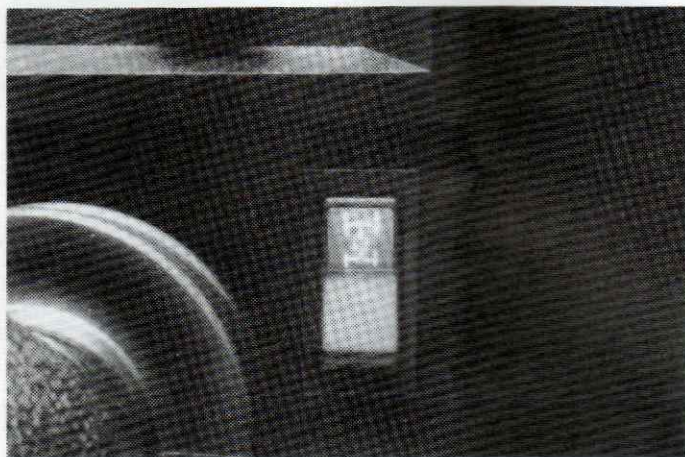
Feature: Good turning lock on M.F.D.

Four Wheel Drive

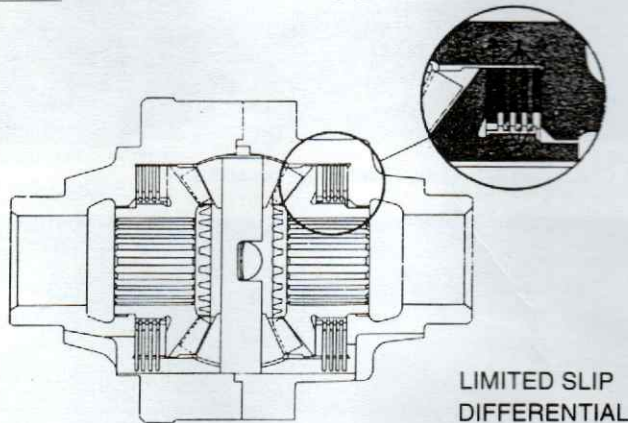
56 Series tractors are available in either two or four wheel drive. The axle used is manufactured by Z.F. The axle case and components are of a rugged design and are made to accept high static loads and input torque. The axle ensures a high ground clearance under the axle housing. The shaft is also guarded to prevent crop wrapping.

The importance of having a true four wheel drive tractor is uppermost to increased performance, less wheel slip and fuel economy.

The limited slip differential provides the machine with an automatic device for locking the front wheels together under adverse conditions, giving true four wheel drive. It operates on a multi-plate clutch principle which locks automatically when slip occurs. The beauty of this system is that it thinks for the operator, locking itself on difficult terrain and unlocking for turning.

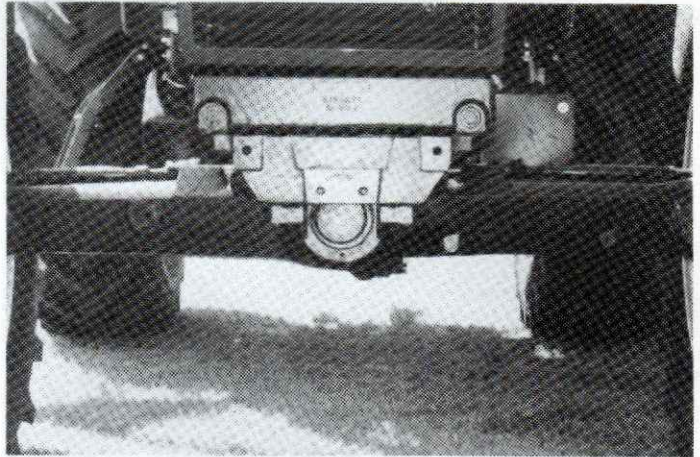


Feature: Electric Control of M.F.D. Engagement



56XL Four Wheel Drive Features

FEATURES	BENEFITS
★ Heavy Duty ZF Front Axle	- Strength to suit all conditions.
★ Limited slip differential adverse conditions.	- Positive traction in all adverse conditions.
★ Large wheel equipment all round. (See Spec. Sheet for sizes).	- Reduced wheel slip long life good flotation.
★ Centre Line Drive	- Excellent ground clearance - Excellent turning circle.



Feature: M.F.D. Drive-shaft shield standard equipment.

56XL Series Weights & Ballasting

The 56 Series of tractors are designed to be performance tuned. That is, they have the balance and weight distribution for total performance without the need for excessive ballast either front or rear.

With these performance tuned tractors we do not offer cast weight as standard equipment front or rear, excepting two layers of rear weights on the 1056XL. YOU SIMPLY DO NOT NEED HUGE AMOUNTS OF DEAD WEIGHT AS IT ONLY ABSORBS HORSEPOWER AND FUEL.

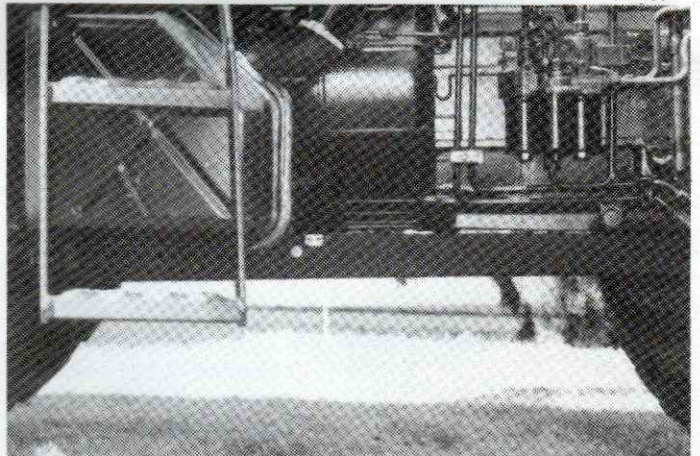
Ballasting Recommendations are as follows:

956XL

- No weights as standard equipment
- Up to 75% water in rear, if required after field test and wheel slip measurement.
- Rear cast weights if required.
- Front cast weights if required.

956XL 4WD

- No weights as standard equipment.
- Up to 75% water in rear if required after field test and wheel slip measurement.
- Up to 75% water in front tyres if extra traction is needed by front axle.
- Rear cast weights if required.
- Front cast weights if heavy mounted implements as required.
(only)



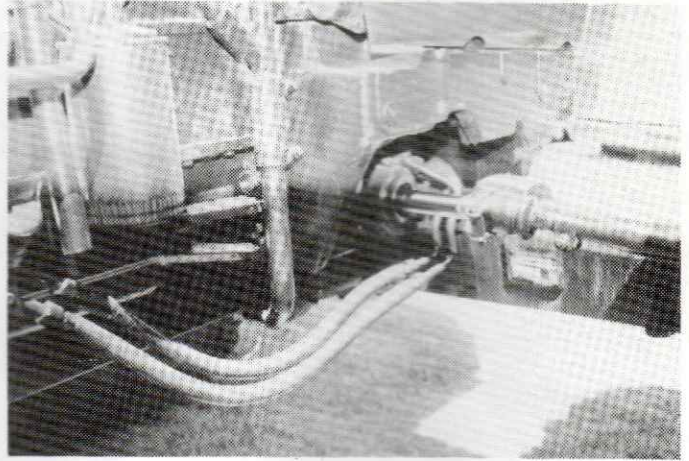
Feature: Heavy duty centre-drive axle with good clean under lines.

1056XL

- Up to 75% water in rear if required after field test and wheel slip measurement.
- Front cast weights if required.

1056XL 4WD

- Up to 75% water in rear if required after field test and wheel slip measurement.
- Up to 75% water in front tyres if extra traction is needed by front axle.
- Front cast weights if heavy mounted implement - as required.



Feature: Steering components protected behind axle.

Bare Weights are as follows:

	Tyres Size	Front	Rear	Total
956XL	10.00 x 16/8 Ply 23.1 x 30/8 Ply	1560 kg (3439 lbs)	2920 kg (6437 lbs)	4480 kg (9876 lbs)
956XL 4WD	12.4 x 28/6 Ply 18.4 x 38/8 Ply	1880 kg (4145 lbs)	2960 kg (6526 lbs)	4840 kg (10671 lbs)
1056XL	11.00 x 16/8 Ply 23.1 x 34/8 Ply	1580 kg (3483 lbs)	2960 kg (6526 lbs)	4540 kg (10009 lbs)
1056XL 4WD	13.6 x 28/6 Ply 18.4 x 38/8 Ply	1900 kg (4189 lbs)	2980 kg (6570 lbs)	4880 kg (10759 lbs)

*As can be seen, the 56XL tractors are very heavy. That is why it is not necessary to fit large amounts of cast or liquid weight. These tractors have a long wheelbase which gives good balance and again not requiring heavy dead ballast. Compare the weights of standard 56XL tractor to the opposition and you will find that they can be up to 455 kg (1000 lbs) heavier.

- 56XL TRACTORS ARE DESIGNED FOR MAXIMUM PRODUCTIVITY AS THEY ARE PERFORMANCE TUNED FOR MOST SOIL CONDITIONS.



THE XL CONTROL CENTRE IS COVERED IN A SEPARATE BOOKLET.

JI Case (Australia) Pty. Ltd. 
Incorporated in N.S.W.
A Tenneco Company
Windsor Road, Northmead, N.S.W. 2152
Telephone: (02) 683 8333

New Zealand Operations:
20 Eastern Hutt Road,
Wingate, Lower Hutt,
Telephone: (04) 675 014

Building On Quality™