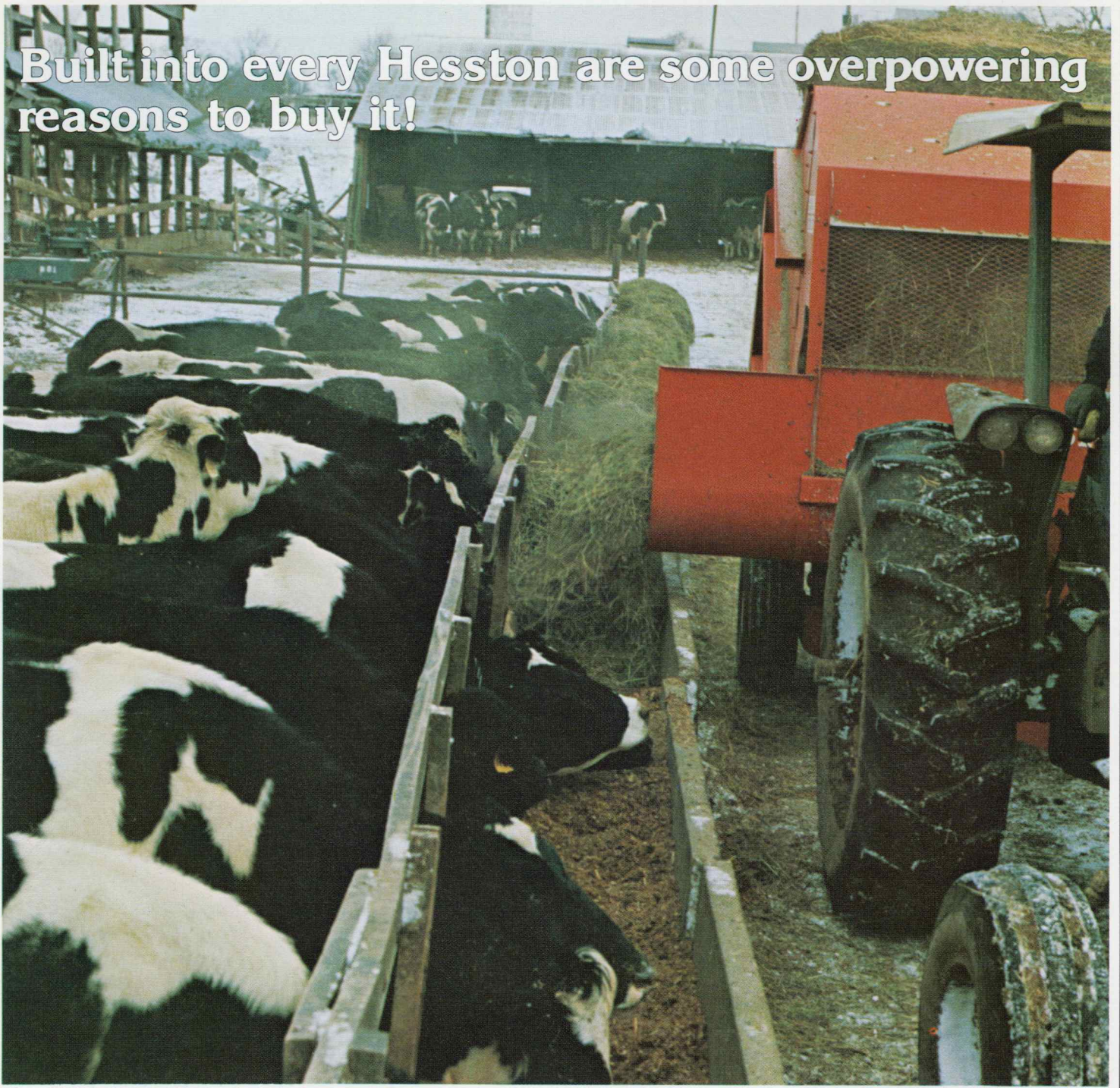


Hesston StakMovers, StakFeeders, StakProcessors and Round Bale Movers



Built into every Hesston are some overpowering reasons to buy it!



Complete your one-man haying or stover system from field to feedlot.

With a Hesston StakHand® or Rounder®, one man puts forage into big, self-storing packages that preserve feed quality. Add a Hesston StakMover or Round Bale Mover and the same man can transport those big packages to storage or feeding areas with speed and ease.

Complete the final link in the Hesston system by mechanizing feeding. That's where the quality of Hesstonized feed pays off. With a StakFeeder® attach-

ment for your Model 60-A or Model 30 StakMover, you can set up a system that makes hay go as much as 30 percent further, compared to free choice feeding.* For stacks up to 1¼ tons, or round bales as large as 3000 pounds, use the StakProcessor 10™. Then, you've got your feed where it was intended to go — into cattle, not wasted by being trampled into the ground. And, you've saved on labor costs, too.

*Based on data gathered by Oklahoma State University.

Hesstonized feeding.

6-ton stack or 1000-pound bale... one man does it all!

A western dairyman reports that *one man* feeds all the hay required by his 1650 cow herd — a chore that he estimates would require four men handling conventional square bales.

His secret: A StakMover 60-A with a StakFeeder® attachment.

Your feeding job may not be that big. But even small operations — up to 100 tons per year — may use a Hesston Rounder or StakHand 10 profitably, and mechanize moving and feeding with a StakProcessor 10. You'll have virtually no waste when you feed hay or stover daily in tight bunks. Or, you can minimize waste by windrowing hay on clean ground for range feeding.

Check out the Hesston "big package" systems. Three different StakHands. Three Rounders. Movers and Feeders to match. Profit with the hay-saving, labor-saving, and cost-saving advantages of the system right for you.



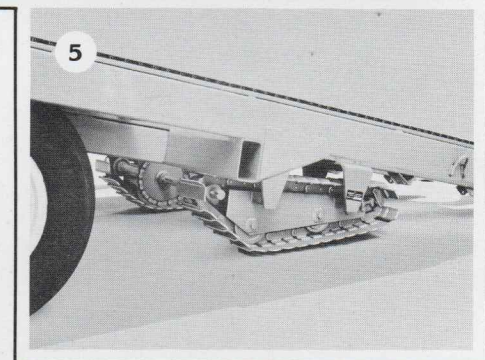
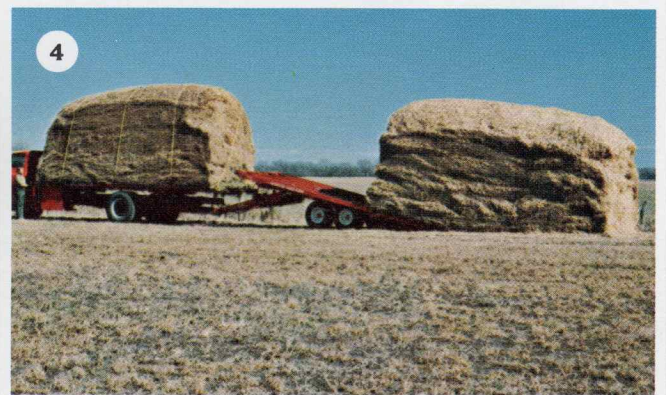
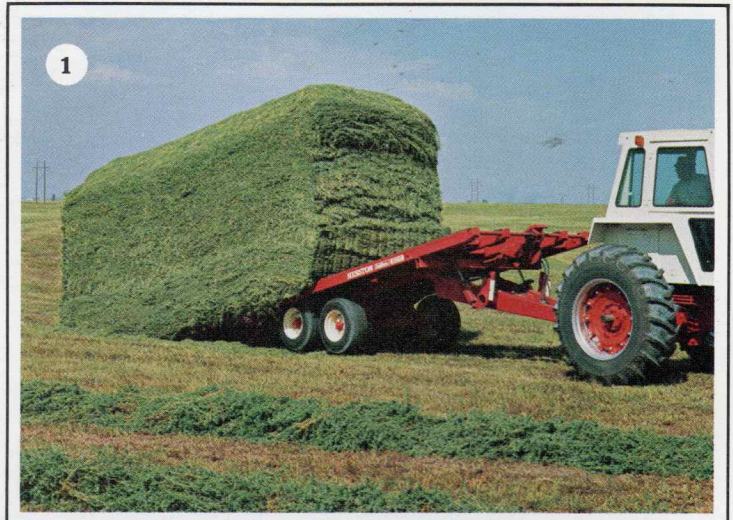
1. The StakFeeder 60-A replaces the standard tongue on a StakMover 60-A. Loads, moves, and feeds a stack as big as six tons in as little as 20 minutes. The hydraulically powered sickle slices the stack, cuts and blends hay or stover as you feed. Leaves neat windrows for range feeding — fills bunks with optional conveyor extension. Does not interfere with use of the StakMover for loading, hauling or unloading stacks.
2. The StakFeeder 30 mounts on a StakMover 30 — handles StakHand stacks up to three tons. Similiar to the StakFeeder 60-A, but with PTO driven sickle.
3. StakFork™ 30/60 mounts on either the 30 or 60-A StakMovers. Hydraulically powered grapple fork lifts 500 lbs. at a bite. Fill high feed bunks. Charge tub grinders. Spread hay or stover for range feeding. Features a 12-foot lift, with an 11-foot reach to either side.
4. The multi-purpose StakProcessor 10 moves and feeds either giant round bales or StakHand 10 sized stacks. Cutting drums shred and blend stacks or bales so well that cattle eat outside thatching right along with the fresh, well preserved interior of the stack or bale.

Moving the big Model 60-A, 30-A or 10 StakHand stacks.

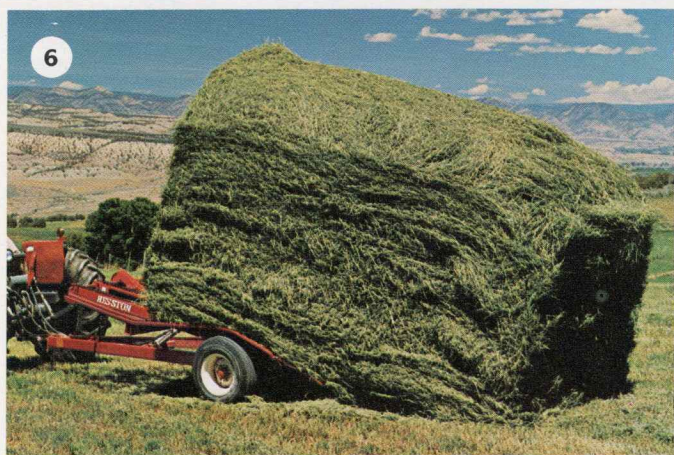
You'll want to move those big Hesstonized packages of hay or stover from the hayfield to a storage site. And, later, from storage site to your feeding areas.

The solution's easy and fast. A Hesston StakMover with a tractor to power it transports StakHand stacks intact, weather resistant, unimpaired. You can load or unload in a minute or less, without getting off of the tractor seat.

StakMover 60-A and 30 beds each consist of five rugged beams with tapered ends and hydraulically powered drag chains. The bed tilts for loading, permitting the drag chains to pull the mover under the stack while the stack rides up and onto the mover bed. Chains reverse for unloading.



1. The 8-foot by 21½-foot bed of a Hesston Farm and Ranch StakMover 60-A can carry a big StakHand 60-A stack. Tandem wheels on walking beams smooth the ride, let all four big flotation tires share the load. Options include electrically controlled brakes, Power Pack to supply hydraulics, and close-up panels that fit between beams to save hay when moving freshly made stacks.
2. Optional 76-inch bed extension and long tongue lets your StakMover 60-A haul two StakHand 30-A stacks at once.
3. Gooseneck tongue lets you hook the StakMover 60-A up to a pickup truck as a fifth-wheel-type trailer. Standard on the Highway Mover, optional on Farm and Ranch model.
4. The 60-A Highway Movers come in gooseneck, straight tongue or truck-trailer models. All are fitted for over-the-road hauling with brakes, highway lighting and truck-type 12.00 x 16.5 tires. The truck-trailer model, shown here, consists of two major components. A StakMover bed mounts on a long wheelbase, heavy-duty truck, such as the Chevrolet CE67303. A trailing unit, equipped with a special telescoping hitch, serves as a loading ramp for the first stack and hauls the second stack. Optional Power Pack supplies the hydraulics.
5. Hydraulically powered crawler tracks fit at the back, under the 30 or 60-A StakMover bed. These pull in unison with loading chains, providing flotation and traction as the mover pulls itself under the stack during loading. Optional on Farm and Ranch models, standard on Highway Movers.



6



7



8



9



10

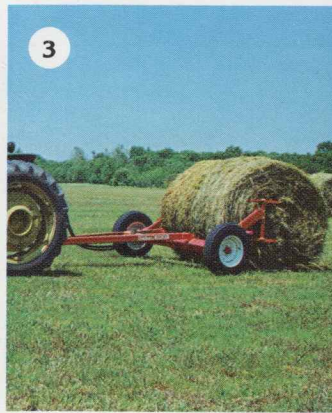
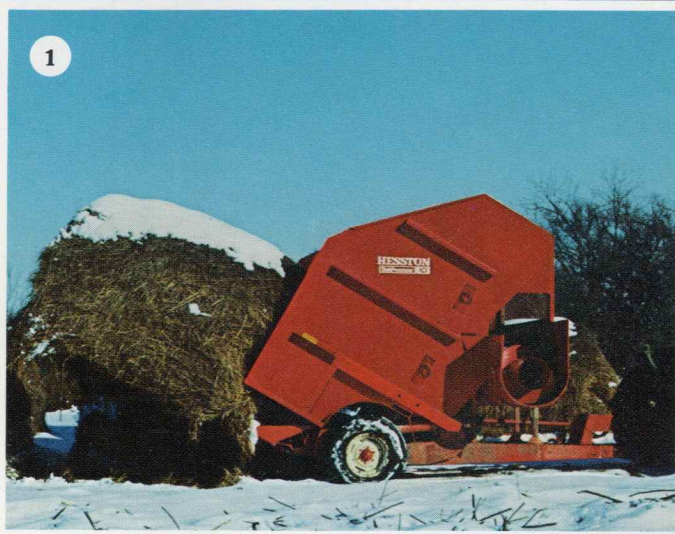
6. The StakMover 30 features an 8-foot by 14-foot bed, moves 3-ton StakHand 30-A stacks or two StakHand 10 stacks. Basic features are similar to the 60-A Farm and Ranch model.
7. The unique StakProcessor 10 is an ideal way to complete a StakHand 10, Hesston Rounder or similar system. Moves and feeds hay or stover packages weighing up to 3000 lbs.
8. The simple StakMover 4040 attaches to any Category II 3-point hitch tractor. Four tines slide under the StakHand 10 stack, let the tractor lift and carry the load. Optional hold-down clamp is recommended for fresh stacks.
9. Wheels on the StakMover 10-W let even small tractors move StakHand 10 stacks. Attaches to Category I or II 3-point hitch. Optional kit with tongue (pictured) converts it to a true pull-type. Optional hold-down clamp is available.
10. For maximum efficiency, fit your StakMover 30 or 60-A with a StakFeeder. Makes one man into a feeding crew. Saves hay.

Rounding out the Hesston Rounder system.

Move those big round bales from field to storage, then from storage to feeding site with a Hesston Bale Mover. They're designed to pick up, carry and unload giant round bales without turning them. This helps prevent additional spoilage spots, created where the bale contacts the soil.

For maximum feeding efficiency, consider the Stak-Processor 10. Use it as a mover. Shred, blend and wind-row hay from bales for range feeding. Or, fill fence-line bunks. Even feed ensilage cutter-blowers for recharging silos.

It may be just the machine to make a Rounder system right for you.



1. Unique StakProcessor 10 handles bales up to 3000 lbs. Shreds and blends outside thatching right with greener hay from inside the bale so that cattle eat it all. Optional auger extension fills bunks up to 32 inches high.
2. Simple 2-tine 5000 Bale Mover attaches to almost any 3-point hitch. Requires Category I, II, or III hitch pins (not included). Lifts bales up to 1500 lbs. and 6-foot diameter.
3. With the economical new Hesston 5100, you simply lower the lift arms and back the mover into the bale. Starwheels automatically impale both ends of the bales.
4. Lift arms on the 5100 position bale over the axle. Clevis hitch permits quick, easy hookup. Required (not included) are two 5.90 x 15 tires (or larger) and ASAE 8-inch (3-inch dia. min.) stroke hydraulic cylinder.
5. King of the Bale Movers, the Hesston 5200 Multi-Bale Mover carries four 6-foot diameter bales, for a total of 6000 pounds. Hydraulically controlled swinging tongue positions the 5200 to the left for loading, centers it for towing. Optional hydraulic Power Pack permits use with pickup trucks.
6. The 5200 loads from the front, using two hydraulically powered drag chains with specially processed lugs.
7. Bed also tilts to the rear on the 5200 Multi-Bale Mover for picking up bales from tight corners, borders and fence rows.

Specifications — Movers and Feeders

StakMover & StakFeeder 60-A

StakMover 60-A

Dimensions And Weight

Bed size — 8' wide × 21½' long
Overall length — 26' Weight — 3350 lbs.

Hydraulic Equipment

Bed tilt power — Requires two ASAE standard 8" cylinders, 3" bore, (not furnished)
Loading chain drive — Hydraulic motor, powered by tractor's hydraulic system

Capacity — 6 tons

Tires — Four 11L × 15 (10-ply) Implement tread

Tractor Requirements

Hydraulics — 10 gpm and 1500 psi min. Dual remote control valves.

Loading And Unloading

By 5 loading beams. Requires less than a minute.

Optional And/Or Extra Equipment

Tongue and bed extension for 30-A stacks. Hydraulically powered crawler tracks. Brakes, electric. Close-up panels. Gooseneck tongue. Standard ASAE cylinder and hose kit for bed tilt.

StakFeeder 60-A

Dimensions And Weight

Length overall, w/StakMover — 31' Width — 12' 4"
Height, mast lowered — 13', mast raised — 24'
Total weight, w/StakMover — 6860 lbs.
Weight on drawbar, no load — 2760 lbs.

(Maximum weight of drawbar can be as much as 6800 lbs. when a stack is half unloaded. This should be taken into account when selecting tractor hitch and counterweights).

Tractor Requirements

Power — 1000 rpm PTO
Hydraulics — 12 gpm with 1500 psi. Dual remote hydraulic controls

Cutter Bar And Mast

Cutter bar width — 11' Max. cutting height — 11'
Sickle drive — hydraulic motor, pitman and swaybar
Mast — 3-section, actuated by cylinder and roller chain

Conveyor

Drag-type — 36" wide, 11' long, right hand discharge
Drive — Belt and chain from PTO
Clearance — About 22" w/15" drawbar height
Conveyor Extension (Optional)
Length — 36"
Working clearance — Adjustable to about 38"

StakMover 60-A, Highway Models

Gooseneck (standard) and Straight Tongue (optional)

Dimensions And Weight

Bed size — 8' wide × 21½' long
Overall height — 76" to top of gooseneck
Overall length, straight tongue — 26'
Overall length — 29' 10" Weight — 5330 lbs.

Capacity — 6 tons

Tires — Four 12 × 16.5 (12-ply) highway tread

Hydraulic Equipment

Loading chain drive. Powered crawler tracks — 2
Bed tilt power — Requires 2 standard ASAE 8" cylinders, 3" bore (extra). Power pack (extra)

Brakes — Drum type, electrically controlled

Loading And Unloading

By 5 loading beams, each with a drag chain
Close-up panels for beams (standard over the wheels, extra between beams)

Optional And/Or Extra Equipment

Tongue and bed extensions (for handling two 30-A stacks with the straight tongue only)
Tongue weight (with extension) — 850 lbs. (no load); 2540 lbs. (loaded)

Truck-Trailer Model

Requires one StakMover bed for mounting on a truck and one straight tongue Highway StakMover.

Min. requirements for trucks are: GVW, 24,000 lbs. Front axle GWR, 7000 lbs. Rear axle, 2-speed with 18,500 lbs. rating. Front spring pad rating, 3000 lbs. Rear spring pad rating, 8200 lbs. Tires, 9.00 × 20-F, 12-ply. Cab to axle length, 138" min., (148" or more, preferred). Frame, heavy-duty re-inforcement.

Required Options

Bed assembly. Power pack with engine. Telescoping hitch. Straight tongue 60-A Highway StakMover.

StakMover & StakFeeder 30

StakMover 30

Dimensions And Weight

Bed size — 8' wide × 16' long
Overall length — 21' Weight — 1800 lbs.

Hydraulic Equipment

Bed tilt power — One standard 8" stroke ASAE cylinder (not furnished)
Power for loading and unloading — Hydraulic motor

Capacity — 3 tons

Tires — Two 11L × 15 (8-ply)

Tractor Requirements

Hydraulics — 1500 psi min. Dual remote hydraulic controls. 12 gpm or more pump volume required.

Loading And Unloading

5 beams with drag chains, bed tilts to rear

Optional And/Or Extra Equipment

Brake kit and brake control. Crawler tracks, hydraulically powered. Winch kit. StakFeeder attachment. 30/60 StakFork attachment. Close-up panels. Power pack, gasoline powered. Cylinder and hoses.

StakFeeder 30

Dimensions And Weights

Weight (estimated and without conveyor extension) — 3000 lbs.

Weight on drawbar — 1900 lbs.

Height (with boom down) — 8'

Width (without conveyor) — 11'

Width (with conveyor extension folded) — 12'

Cutter Bar

Width — 9½'

Clearance under cutter bar when raised — 9'

Sickle speed — 1200 strokes/minute

Vertical movement — Hydraulic cylinder

Drives

StakMover bed — Hydraulic motor

Sickle — Belt, pitman and swaybar from PTO

Conveyor — Belt and chain

Sickle lift — Hydraulic cylinder

Conveyor

Width — 36" Delivery — Right hand

Tractor Requirements

Power — 540 or 1000 rpm PTO

Hydraulics — 1700 psi, min. Two remote control valves.

Optional And/Or Extra Equipment

48" conveyor extension for bunk feeding.
540 PTO yoke.

StakFork 30/60

Dimensions And Weights

Overall weights — 30: 1700 lbs., 60: 1150 lbs.

Overall height (boom raised) — 18' 8"

Height (approx. w/boom lowered) — 10'

Max. working height — 12'

Max. working reach (center of swing mast to center fork tine) — 134¼"

Max. swivel (to right or left side) — 52°

Fork

Full swivel type Tine type — Spring wound

Number of tines — 6 Tine opening — 60"

Drives

All hydraulic (all lines and hoses — except for bed tilt cylinder hose — are furnished from fork to control valves)

All double-acting cylinders (4) are furnished

Boom cylinder stroke — 8"

Stick cylinder stroke — 24"

Tractor Requirements

Same horsepower requirement as that of StakMover model being used. Dual remote cylinder control. 1750 psi min. 12 gpm or more pump volume

Optional And/Or Extra Equipment

Special mounting tongue for SM 30.

Mounting plate for Stak 60-A.

StakProcessor 10

Dimensions And Weight

Weight (approx.) — 4100 lbs. Length — 165½"

Height (tines up) — 130½"

Width (less extension kit) — 95¼"

Hydraulic Equipment

Two 4" × 14" stroke cylinders for lifting stacks or bales into cutters

Capacity

StakHand 10 stack or Rounder-type bale up to 3000 lbs.

Loading

Four tines slide under stack or bale for moving, tilt up to slide hay into cutters

Tires — Two 9.5L × 15 (6-ply) tires and wheels

Tractor Requirements

Power — 540 rpm PTO

Hydraulics — Dual remote outlets

Cutter — Two cutter assemblies. Discharge auger.

Drives

Single #80 roller chain to cutter rotors and discharge auger. Slip clutch for drive train protection. One 1.35:1 right angle gear box.

Standard Equipment — Parking jack

Optional And/Or Extra Equipment

Auger extension kit (for bunk feeding).
Aux. upper spiral kit.

StakMover 4040 & 10-W

StakMover 4040

Dimensions And Weight

Overall length — 82" Number of tines — 4

Overall width — 91" Length of tines — 75"

Weight (approx.) — 420 lbs.

Capacity

Will carry StakHand 10 stacks, up to 2500 lbs.

Tractor Requirements

Sufficient to maintain 500 lbs. front axle weight.

Category II 3-point hitch. Front end weights. 1800 psi or better hydraulic system. Single remote control.

Optional And/Or Extra Equipment

Additional tine. Stak hold-down kit. (includes cylinder)

StakMover 10-W

Dimensions And Weight

Overall length — 102½" Length of tines — 89"

Overall width — 134½" Ground clearance — 14"

Weight (approx.) — 1175 lbs.

Number of tines — 4 standard

Capacity

Will carry StakHand 10 stacks, up to 2500 lbs.

Tires — Two 20.5 × 8" (10-ply)

Tractor Requirements

Category I or II 3-point hitch (lower lift pins not furnished). 1800 psi or better hydraulic system. Single remote circuit. Dual with hold-down clamp.

Optional And/Or Extra Equipment

Pull hitch conversion kit. Hold-down clamp. Additional tines. Hydraulic cylinder ASAE, 8" stroke, 3" bore required.

5200 Multi-Bale Mover

Dimensions

Overall length — 314" Bed length — 256"

Overall height — 35" Bed height — 27"

Rail width center to center — 36"

Min. ground clearance — 10"

Width with tongue in field position — 134"

Width with tongue in transport position — 96"

Bale size — Diameter 48" to 72", length 48" to 63"

Capacity — 6000 lbs.

Tires — Two 11L × 15 (10-ply)

Tractor Requirements

Dual remote hydraulic system with 2000 psi min.

Optional And/Or Extra Equipment

Hydraulic power pack.
Heavy bale kit for bales up to 2000 psi (max. dia. 6").
(Total load must be limited to 6000 lbs.)

Round Bale Mover, Models 5000 & 5100

5000 Mover

Dimensions And Weights

Overall length — 68" Width — 36"

Tine length, usable — 45" Height — 14"

Weight, shipping — 170 lbs.

Capacity — 1500 lbs. max. May be limited by tractor lift capacity and/or front end weight.

Tractor Requirements

Fits any tractor with Category I, II, or III 3-point hitch.

Tractor should be weighted to provide at least 500 lbs. on front axle with bale lifted into transport position. Category I, II, or III hitch pins are required (not included.)

5100 Mover

Dimensions And Weights

Width — 8" Height — 62", arms raised

Length, overall, arms back — 142"

Weight on drawbar — 50 lbs. empty, 150 lbs. loaded max.

Capacity — 1500 lbs.

Bale Sizes — Handle bales up to 5½' long and 6' dia

Tractor Requirements

Hydraulics — Single remote, circuit, 1500 psi min.

Drawbar for clevis hitch.

(Optional power pack, operating off of a 12-volt electrical system is available. This will permit towing the 5100 mover with a pickup truck, jeep, or other vehicles without hydraulic system).

Optional And/Or Extra Equipment

Tires — Two 5.90 × 15 min. recommended.

Cylinder kit — 3" bore, 8" stroke cylinder.

Specifications subject to change without notice and without liability therefore.

StakHand, StakFeeder and Rounder are registered trademarks of Hesston Corporation.

This booklet contains information that is drawn from sources believed to be reliable; however, it is obviously general in nature. Specific operations may vary from the average, and both crop and machine management, as well as the weather, are important factors in end result.



Hesston, Kansas 67062



First with a better way.



WAITAKI TRACTORS & MACHINERY LTD
10 EDEN ST OAMARU
P.O. Box 258 Phone 37-355