

▶▶▶ **Hig-performance mower conditioner**



# **BIG M II**

--	--	--	--	--	--	--	--

# BiG M II – pure power!

## Here's the Proof:

- **Top technology for optimum performance:**  
*Mow and condition 15 halh with a mowing width up to 9.70 m*
- **Krone EasyCut mowers with CV high-performance conditioner or CRi roller conditioner**
- **Powerful engine: 265 kW/ 360 PS, 12litre capacity**
- **Automatic radiator cleaning with the powerful "Clean Fix" reverse ventilation**
- **Two driving ranges:**  
*Field: 0-17 km/h for mowing*  
*Transport: 0-40 km/h for fast road travel*
- **Transport range with 'automotive drive' for reduced fuel consumption and noise**
- **Hydrostatic drive train, powerful and manoeuvrable**
- **Optimum weight distribution for comfortable driving performance**
- **Large wheels with flotation tyres**
- **The Krone cab – designed with modern ergonomics in mind – roomy, air conditioned and well-organised**
- **Optional: the BIG swath system:**  
*9.7 m of grass put into one swath!*



 **KRONE**

More than 15 ha/h



40 km/h!



One out of three!



# BiG M II – convenience at the workplace!

When high performance is needed, workplace convenience is a must. Krone has equipped the BiG M II cab accordingly: spacious and, of course, with an air-suspended seat. Clear displays and with all the switches and control levers ergonomically arranged. The excellent panoramic view of all three mowers enables relaxed operation of the equipment. It goes without saying that the cab is also air-conditioned.



Plenty of room for the driver and a passenger: This spacious, air-conditioned cab allows the operator to fully concentrate on the job in hand without interruptions – even when working late into the night. The large glass area ensures perfect visibility of all three mower units.



Further functions: The well-organised control panel next to the driver's seat. Toggle switches are used to either lock or energise individual work positions, such as drive train, differential lock, parking brake, etc.

Safe and practical!



Comfortable: The practical staircase provides not only direct access to the cab, but also is designed for safety.



Basis for long working days: All displays, switches and control levers are clearly and ergonomically arranged. The air-suspended seat with its integrated joystick, the steering column and the steering wheel can all be adapted to the individual requirements of the driver.



Everything under control



At a glance: Via the display, not only can information such as the mower speed, the driving speed, hours worked and field areas covered be viewed, but also important machine functions can be programmed. When the speed drops, the driver is alerted by visual and acoustic signals.



Organised and within reach: All the major working functions are controlled by means of the joystick integrated in the armrest such as lifting and lowering the mowers, emergency quick stop and the drive train. The mowers can be also be controlled individually.

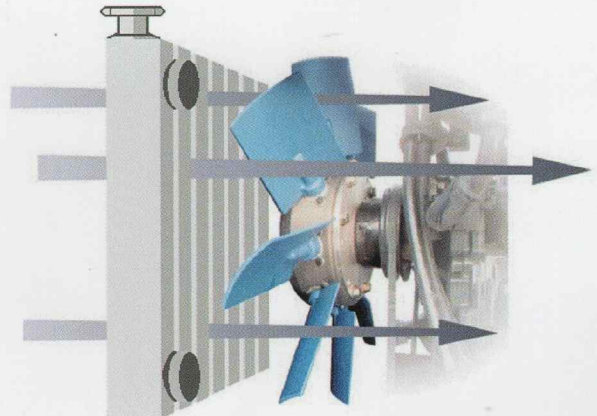
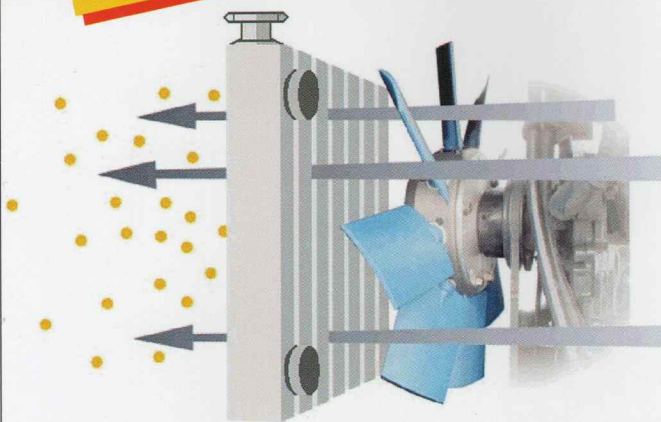
## BiG M II – Uncompromising power

The high-performance mower conditioner BiG M II is a prime example of power and comfort! To mow and condition more than 15 ha per hour, then all the components have to be in perfect harmony. Krone designed the BiG M II series entirely with high performance in mind. The Mercedes-Benz engine with 265 KW / 360 HP provides enough reserve power to fulfill even the highest expectations. Parameter-controlled pumps reduce fuel consumption. Clean combustion guarantees compliance with existing emissions standards.



Service and maintenance with no ifs or buts: The protective covers are opened quickly and easily from the ground enabling the operator to access the insides of the BiG M II in order to quickly perform any necessary maintenance.

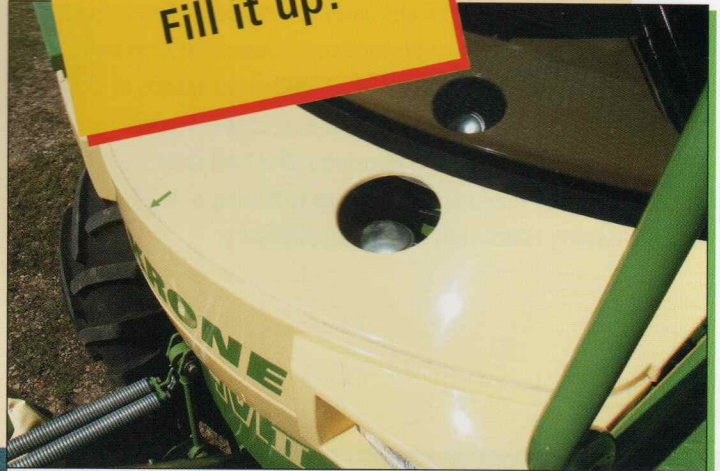
With reverse ventilation!



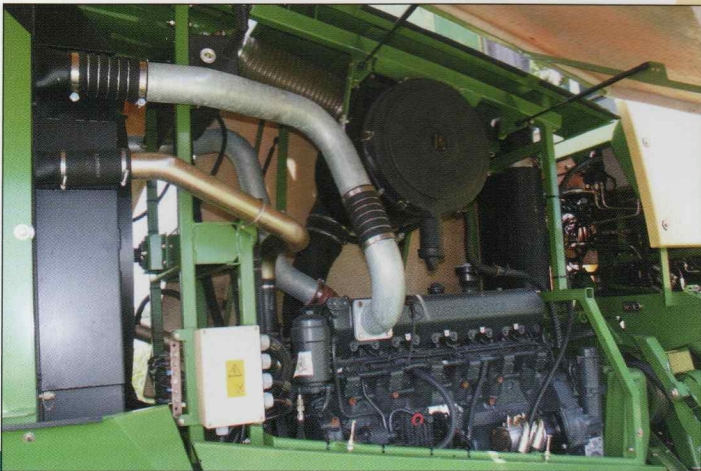
High standards for the engine cooling system: Especially when mowing over-ripe crops where the danger of the radiator being blocked up by the flower heads, leaves and dust is especially high. Reverse ventilation with the Cleanfix system is the ideal solution to this problem. At programmed intervals the blades of the reverse fan turn

on their own axis, thus reversing the direction of the full airflow to blow out the radiator. This reduces cleaning time and protects the engine from overheating.

Fill it up!



700 litre tank capacity: Fuel for a long workday – 14 hours or more. With the continuous increase in performance and radius of action, tank capacity is becoming increasingly important. Hauling diesel fuel to the field and refuelling costs time and effort.



At the right place with direct power flux: The central suspension of the engine between the front and rear axles provides many advantages: Short drive routes to the mowing units and optimum distribution of weight – important, for example, when driving fast on the road. The low centre of gravity optimises the driving performance on slopes.

Power House!



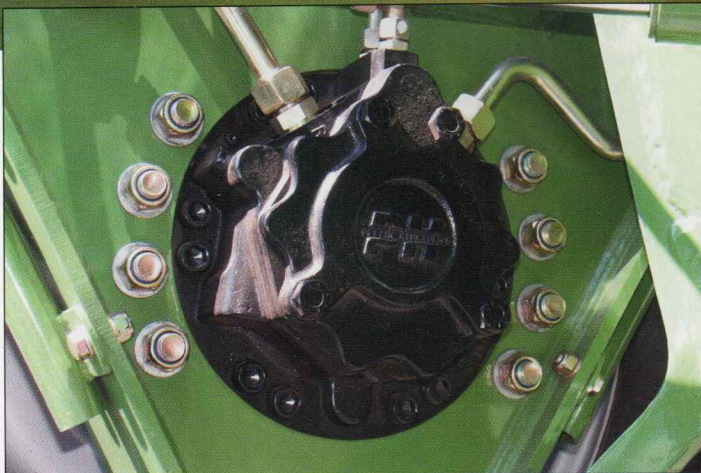
265 KW/ 360 PS, 12 litre displacement: The powerful six-cylinder in-line engine from Daimler-Chrysler with electronic engine management features optimum efficiency and complies with all relevant emissions guidelines.

## **BiG M II – at 40 km/h to that destination!**

Continuous improvement of efficiency and output – this is the number one priority at Krone as performance saves both time and money. That's why the BiG M II is fast: With road speeds of up to 40 km/h and the side mower units raised in seconds, minimising unproductive transport times. The hydrostatic all-wheel drive train makes the machine very manoeuvrable. Sharp cornering at the headland reduces turning times, thus increasing efficiency.



Compact through and through: Converts from 9.70 m mowing width to 3 m transport width without leaving the cab. The layout in transport ensures a high degree of safety and a clear view for driving on roads with heavy traffic.



Hydraulic drive train: The drive train of the all-wheel drive BiG M II is unique on the market. Four radial piston motors help the machine to achieve what is impossible with conventional drive trains.



The view from above proves it: The rear axle steering and the hydraulic drive train make the BiG M II so manoeuvrable that maximum output is possible even in confined spaces. Therefore, the self-propelled mower conditioner from Spelle is viable even when used for cutting smaller fields.

**Spring-suspension front axle!**



Spring-mounted front axle: The BiG M II has a hydro-pneumatic spring-suspended front axle as standard equipment. It provides not only for a quiet, comfortable driving behaviour, but also for increased ground clearance when mowing.



Easy on the turf: The large-volume tyres – 750/65 R 26 at the front, 600/65 R 26 at the back – ensure optimum protection of the precious sward. The large contact surface of the BiG M II tyres leaves no tracks or ground compaction.



**40  
km/h**



Excellent work under any conditions: Whether the fields are small or large, on flat land or hills – the high-performance mower conditioner with all-wheel drive gives a top performance under any operating conditions.



Infinitely variable drive concept: Two pumps for the all-wheel drive. The front and rear axles are driven separately enabling the BiG M II to handle even the roughest terrain.

# Triple advantage – KRONE EasyCut mow

In order to achieve these high capacities of 15 ha/h and more, the drive concept must be designed accordingly. The mower units are driven centrally. Short and direct routes ensure the best power transfer with the extra wide power belts providing the necessary drive and are designed for a long service life. All three mower units can be controlled individually so no double mowing in corners, etc. and since the side mowers are located between the front and rear axles, the weight distribution in the BiG M II is ideal.



BiG M II, the mowing giant: 9.70 m mowing width with three EasyCut mower units and CV high-performance conditioners or 9.00 m with CRI conditioner rollers. The mower units all function independently with a clean cut always guaranteed.

Direct path



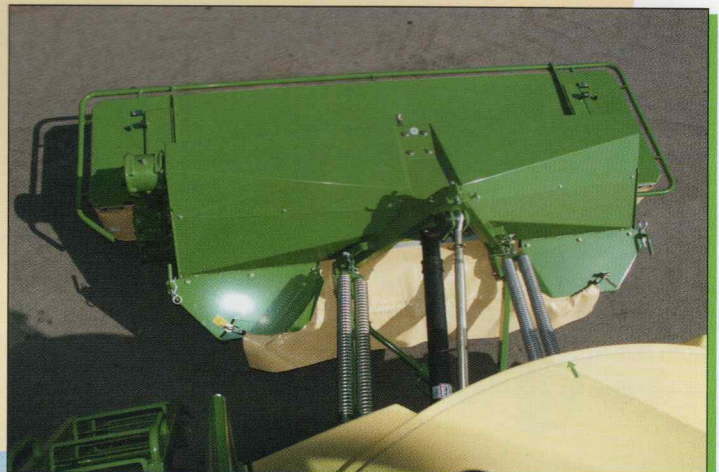
Direct path for full power: The central transmission for the mowers is driven directly off the engine. This maximises the available power putting it exactly where it is needed.



Optimum guidance: Spring relief packages reduce the contact pressure of the side mowers and provide the optimum contour following on the ground and are adjusted manually by means of a bolted central coupling bar. Hydraulic adjustment is available as an option.



Pushing ahead of the rest: The integrated "A" frame with high upward and downward clearance, together with adjustable tension springs and long skids ensures optimum ground adaptation in the toughest conditions. The result: A clean cut.



An excellent cut across the entire mowing width, even on slopes, with the optional front mower steering kit: The frame of the front mower can be moved to the left and right by means of a hydraulic cylinder adjusting the overlap to the side mowers.



FlexiCut: Hydraulically set cutting height option. When working in varying conditions, a previously saved cutting height can be recalled at any time to ensure neater working.

**Power belt drive**



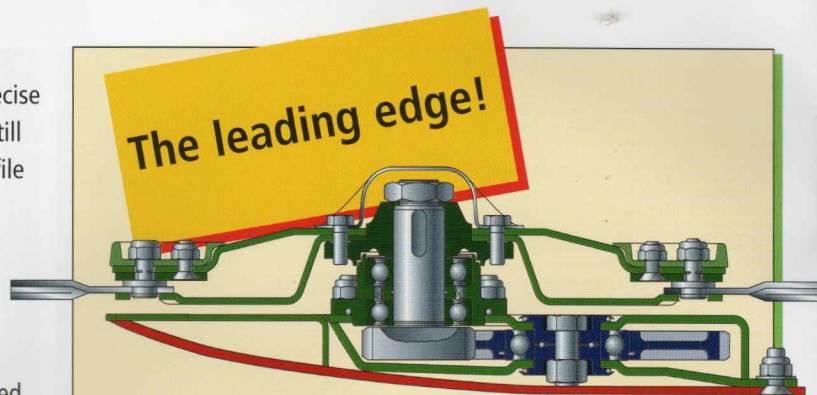
Full power: Large compound belts, or "power belts", with automatic tensioning transfer the drive power directly from the central transmission down to the mower conditioners.



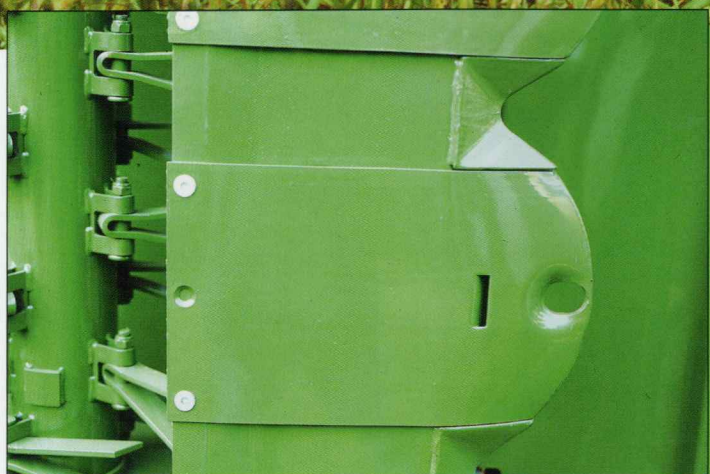
One movement of the hand: Adjustment of the cutting height on the side mowers is fast and easy. This allows you to quickly adapt the mowers to the local conditions.

# EasyCut – cutting edge technology!

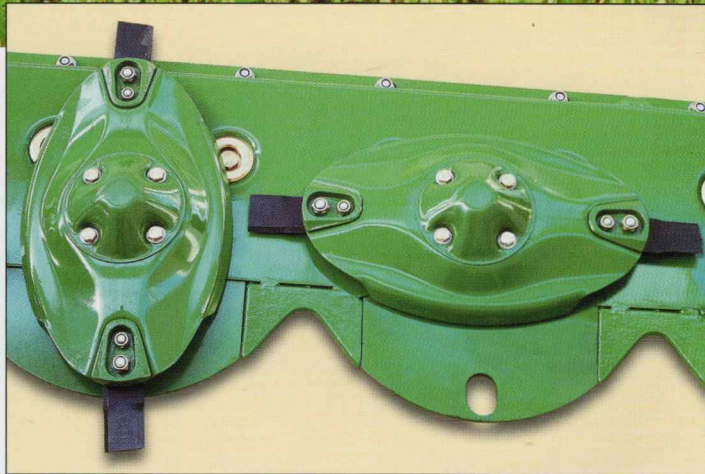
The three disc mowers of the BiG M II are tried and tested units from the EasyCut series. They are the guarantee for clean and precise mowing. The completely enclosed and welded mower beds will still be in good shape even after years of use. The wedge-shaped profile gives an even greater cutting height adjustment range offering major advantages in difficult situations such as laid crops. Large drive gears are always in contact with oil and can withstand extreme, continuous loads and yet operating exceedingly quietly. All EasyCut mowers are equipped with oversized skids to protect both the mower bed and the sward. Quick-change blades are fitted as standard equipment saving time and adding convenience.



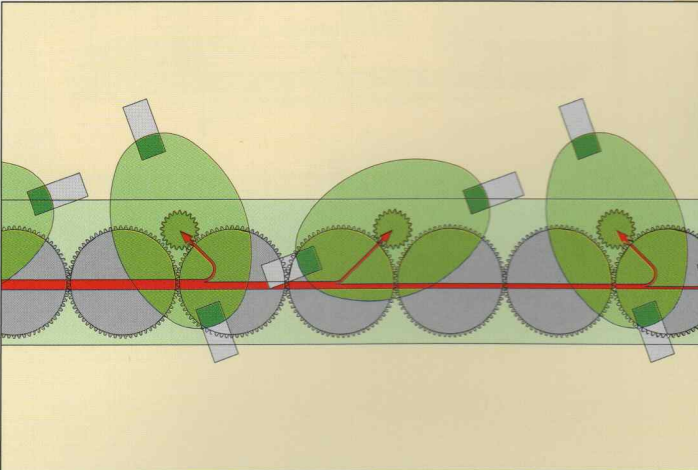
**Making the Cut:** The completely enclosed and welded mower bed is wedge-shaped to ensure an optimum cut even under the most difficult conditions. The mowing discs are positioned for added safety within the width of the bed and are thus fully protected.



**Gliding made easy:** The extra wide skids reduce contact pressure, adapt better to the ground contours and protect the mower bed. EasyCut CV and CRI can also be equipped with height-adjustable high cut skids.



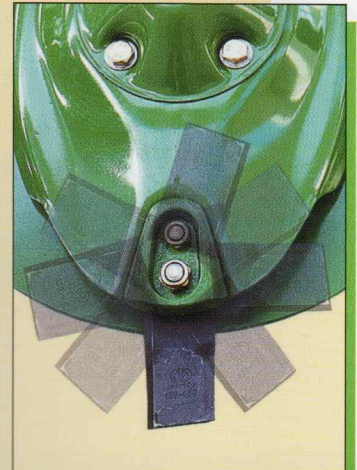
The wear blocks between the skids protect the mower bed from damage and their special shape helps cutting quality due to improved grass flow.



The main drive power is transferred through the bed by the large drive gears. The result? Convincingly quiet running characteristics. The satellite output drives and therefore the mower discs are positioned well forward producing an optimum overlap of the blades and results in an absolutely perfect cut.



Couldn't be easier: The satellite drive hubs and gears directly beneath the discs can be simply removed from the top; those for the main drive are taken out of the end.



Easy running: The 112 mm blades can turn freely on the mounting studs where the 360° swivel range serves to protect the blades.



**Quick change knives**



Quick change blades and mounting studs: Standard equipment for all EasyCut disc mowers! Replacement of the blades takes only a few minutes.



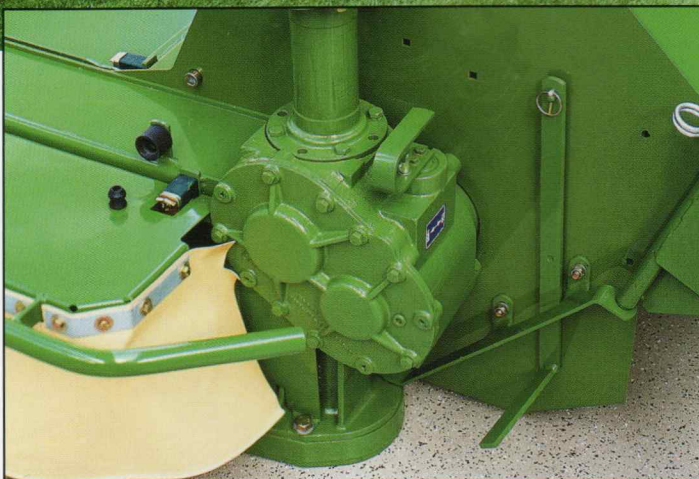
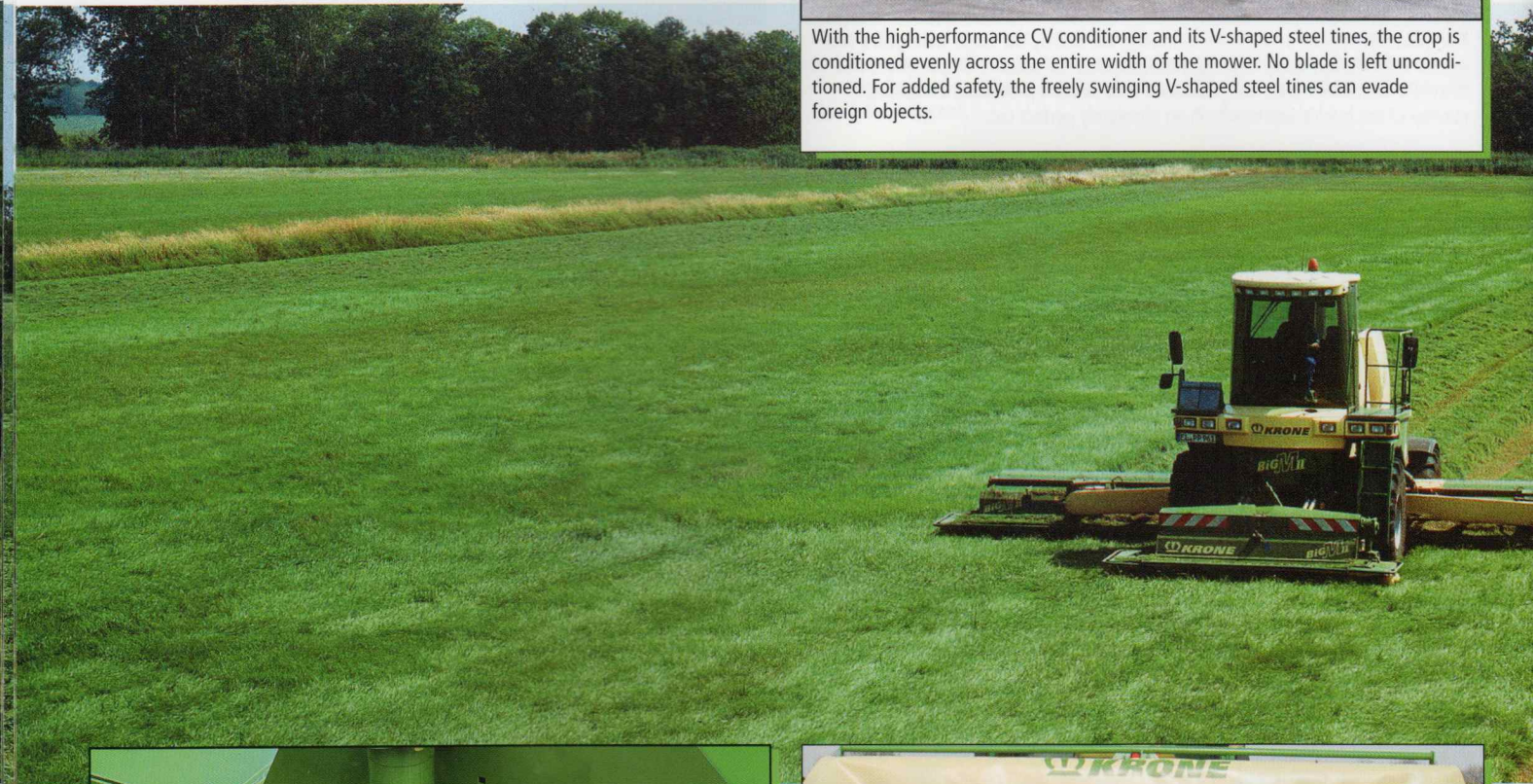
Worn blade mounting studs and spacers – no problem for KRONE EasyCut! They can be replaced individually. On request, the blade fixing studs can be replaced by bolts.

# Optimum conditioning technology for o

During the foraging season, the quality of the forage is as important as harvesting efficiency. The integrated V-shaped steel tine CV conditioners with two conditioning speeds (700 or 1000 rpm) guarantee optimum conditioning and top forage quality. For sensitive, wide-leaf forage varieties, such as leguminous crops, the KRONE CRI (Conditioner Roller interlocking) with two profiled, interlocking rollers is the solution. The CRI conditioner is used primarily for lucerne where it protects the leaf mass and crushes the stems, in order to ensure a fast and even drying.



With the high-performance CV conditioner and its V-shaped steel tines, the crop is conditioned evenly across the entire width of the mower. No blade is left unconditioned. For added safety, the freely swinging V-shaped steel tines can evade foreign objects.



Two in one: The mower bed and the conditioner are powered by a single drive. The integrated transmission for the CV conditioner has two speeds: 700 and 1000 rpm.



Conditioner roller  
CRI

The specialist for leguminous crops: The CRI, equipped with one-piece continuous rollers, ensures an even conditioning over the entire working width. The roller spacing, the pressure and the swath boards are all infinitely adjustable.

**Optimum forage quality!**

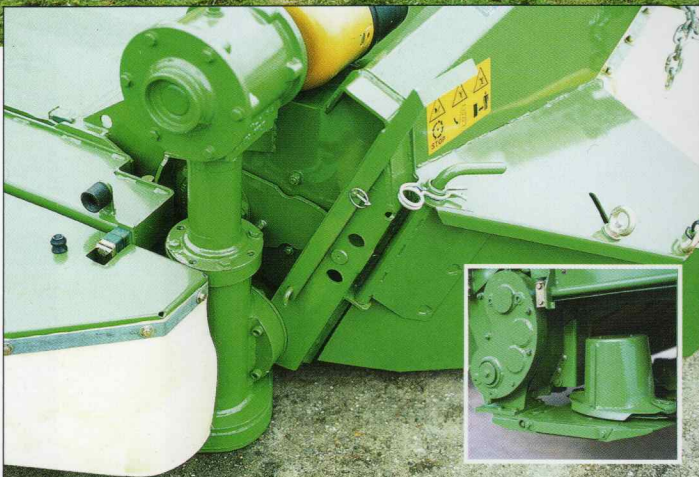


**Chequered baffle plate**

KRONE CV conditioner with chequered baffle plate: The adjustable chequered baffle plate supplements the V-shaped steel tines to optimise the crop conditioning guaranteeing top silage.



Quick and easy baffle plate adjustment: The infinitely adjustable spacing between the tines and the baffle plate allows for total control the conditioning process. The smaller the gap means the more intensive the conditioning effect.



Positive power transfer: The CRi conditioner roller is driven directly by means of a transmission and thus no slippage. In addition to the lower roller, as an option, the upper roller can also be driven.



Get a grip: The large 25cm diameter press rollers are treaded and interlock. This "intermeshing" increases the conditioning intensity. The synthetic, polyurethane coating guarantees a long service life.

# The KRONE BiG swath system turns 3 in

The BiG Swath System for windrowing is available as an option for the BiG M II. The outer mowers are equipped with an integrated auger to transfer the crop, from the entire working width of the CV conditioner or CRi conditioner roller, into a single swath. This variant is especially useful when additional tasks, such as swathing, tedding and turning, are not required. The Krone BiG Swath System works not only for grass and lucerne drying, but can also be very effective when zero grazing. The clean swath can be picked up directly by the forager or pickup wagon, for example.



Clean: The BiG Swath System with a CRi conditioner in lucerne. Without touching the ground, the augers transfer the crop on to the swath produced by the front mower.



For reduced downtime: Optional central lubrication for all three mowers!



View of the drives: The BiG Swath System uses a powerful and reliable belt drive system. For wide swath deposition, the BiG Swath System can easily be removed and replaced by a conditioner cowling.

to 1!

With continuous flow!



The insides: The crop is transferred from the mower via the CV or CRI conditioner into the conveyor augers and then transferred on to the middle swath.



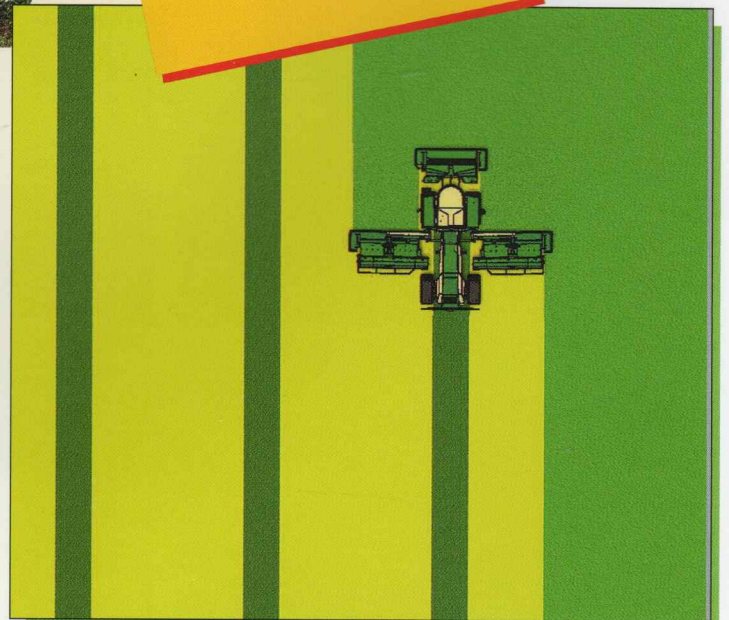
View of the guide plates: Guide plates are integrated in the hood for reliable conveyance of the crop to the centre.



A clean swath!



Closed: The view from the rear shows the compact unit, completely enclosed, that reliably channels the forage to a swath with a width of 1.80 m.



## Technical data

Model		BiG M II
Engine manufacturer		Daimler-Chrysler
Engine model		OM 457LA
Power	KW/HP	265/360
no. of cylinders		R-6
Displacement	l	12 = 732 in <sup>3</sup>
Working width EasyCut CV	mm	9.700 = 31'10"
Working width EasyCut CRi	mm	9.000
Weight	approx. kg	12.260 = 27,030 lbs
Weight distribution		60% front / 40% rear
Fuel tank capacity	l	700
Mowing conditioner		3 mowing conditioner units which can be independently controlled and folded V-tine conditioner: Adjustable speed: 700 RPM; 1.000 RPM Roller conditioner (optional): Intermeshing plastic rollers speed: 850 RPM Big Swath System (optional): swath grouper for V-tine conditioner
Transmission		Direct drive using radial piston motors Full-time all-wheel drive with part-time differential lock 2 ratios Level I: 0-17 km/h = 0-10 mph continuously variable Level II: 0-40 km/h = 0-25 mph continuously variable
Tyres	front: rear:	750/65 R26 (1.640 mm = 65" diameter) 600/65 R28 (1.430 mm = 58" diameter)
Chassis		Rear axle steering, 53° steering lock
Max. road speed at engine speed	km/h	40 km/h = 25 mph
High comfort cab with driver information system		Standard
Air conditioning		Standard
Air-ride seat		Standard
Transport length	mm	8.060 = 26' 5"
Transport width	mm	3.000 = 9' 10"
Height	mm	4.000 = 13' 2"
Wheel base	mm	4.000 = 13' 2"

# More economical and more efficient!



The Krone BIG Swath System with the hydraulically actuated conditioner hoods opens up entirely new possibilities. The choice is between; one wide swath, two widely spaced swaths or one compact swath or all three variations are possible within the full mowing width!



Optional hydraulics: The hoods on the left and right mower units can be individually opened and closed from the driver's seat. When the flap is closed, the crop is conveyed to the middle; an open flap leaves a wide swath deposition.



**Turn 3 into 2!**

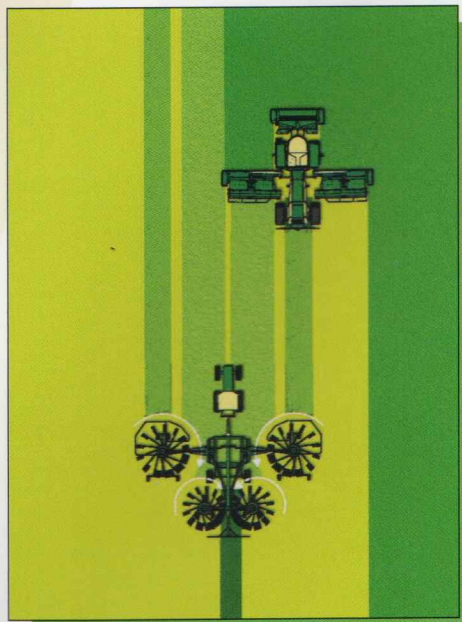
**12 metre deposition**

**Mowing with either flap closed!**

**That works!**



A collected swath of more than 19metres: Pure capacity – with the Krone BIG Swath System and the Krone four-rotor Swadro 1250 centre swath rake. A further advantage is that it is ideal for the additional wilting of the crop deposited over a width of approx. 12 m.



# ▶▶▶ The KRONE agricultural machinery range:



Disc mowers

Rotary tedders

Rotary rakes

Self-loading wagons

Dual purpose loading wagons

Round balers

Baler-wrapper combination

Big square balers

Mower conditioners

Precision chop forage harvester

Technical specification may alter without prior notice, some photographs may show optional equipment.

Distributed by:



P.O. Box 200 Masterton 5840  
Phone 0800 8855624  
website: [www.tulloch.co.nz](http://www.tulloch.co.nz)

**KRONE**  
Hay & Forage Technology

Maschinenfabrik Bernard KRONE GmbH

Heinrich-Krone-Straße 10, D-48480 Spelle  
Postfach 1163, D-48478 Spelle

Telefon: +49(0)5977 / 935-0  
Telefax: +49(0)5977 / 935-339  
info.ldm@krone.de  
[www.krone.de](http://www.krone.de)