



KRONE

Round Balers KR 130 / KR 160





KR 130

Length approx. 3,700 mm, width approx. 2,240 mm,
height approx. 1,980 mm, track approx. 1,950 mm.

Tyres 10.0/75-15.3/8 ply.

2 single-acting hydraulic connections.

Pick-up width approx. 1,500 mm.

2 sensor wheels with spring relief.

Binding twine 400-600 m/kg.

Bale dimensions \varnothing 1,200 x 1,200 mm.

Weight approx. 1,730 kg.

Power requirement
from 25 kW (34 hp).

KR 160

Length approx. 3,900 mm, width approx. 2,280 mm,
height approx. 2,260 mm, track approx. 1,950 mm.

Tyres 11.5/80-15.3/8 ply.

2 single-acting hydraulic connections.

Pick-up width approx. 1,500 mm.

2 sensor wheels with spring relief.

Binding twine 400-600 m/kg.

Bale dimensions \varnothing 1,500 x 1,200 mm.

Weight approx. 1,950 kg.

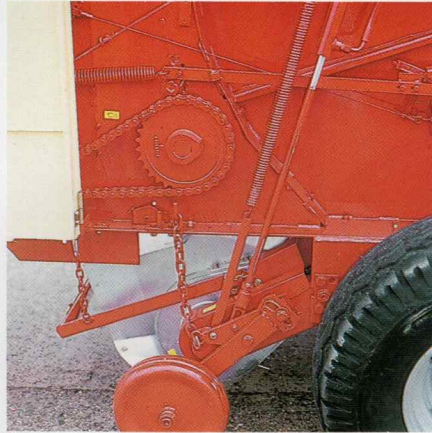
Power requirement
from 29 kW (40 hp).



Round Balers



1



2



3



4



5



6

1 Large, fully galvanized pick-up as a standard feature. Deflector plate with hold-down bar. Large support wheels.

2 Hydraulic pick-up operation via two hydraulic cylinders, pick-up suspension with spring relief.

3 Wrapping material box within the driver's view. Spacious and efficient - an important factor.

4 The KRONE hydraulic net wrapping system including the storage of the spare roll has been designed for practical use. No additional facilities or aids are required.

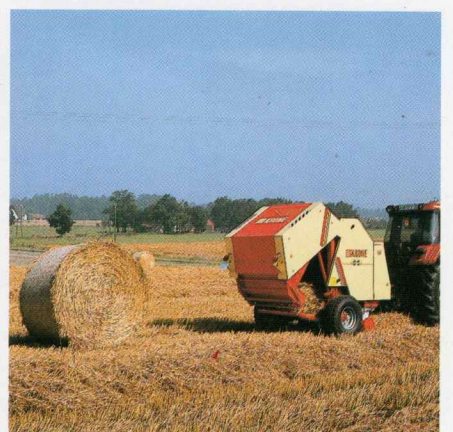
5 The elevator with a full complement of conveyor slats for maximum performance. The bale ejector also serves as a collector and is ideal for intensive use with minimum stops.

6 Maximum operating comfort with the hydraulic operation of the wrapping system, assisted by the electronic pressure gauge with audible warning for the bale density (can be preset).



7

7 An electronic comfort operation system developed by KRONE is available as an option for both models.



8

8 The Mini-Stop-System showing crop entering the bale chamber as the rear door is closing.





KRONE



KRONE-Round Balers – The unbeatable ones.*



* Unbeatable, because:

- of their low energy consumption due to their minimum power requirement
- they pick up and compress everything
- they produce no crumbling losses
- they produce no dust
- they have no multitude of belts or rollers
- their fully enclosed bale chamber is unique.

... Krone products always do the job



KRONE

Maschinenfabriken Bernard Krone GmbH
Landmaschinen, Nutzfahrzeuge
Heinrich-Krone-Straße 10, D-4441 Spelle
Telefon (05977) 810, Telex 981648
Telefax (05977) 81339

Our dealers will be pleased
to help with any queries.

All illustrations, dimensions and technical data
are given as a guideline only.