

**New Holland**  
**28 to 47 hp Compact Diesel Tractors**

1720 1920 2120 3415



**NEW HOLLAND**



# Reliable performance, no matter what the job

Work faster, easier and more efficiently with a New Holland all-purpose compact diesel tractor. Whether you're mowing grass, grading for new homes, raking, hauling or loading, these 28 to 47 hp tractors will get the job done. And you can depend on New Holland compact diesels for their proven reliability and easy maintenance.

You'll appreciate the conveniently placed controls ... the 540-rpm PTO that powers a wide range of attachments ... and the compact design for effortless maneuverability in tight spaces.

MODEL	HP
1720. . . . .	28
1920. . . . .	33
2120. . . . .	43
3415. . . . .	47

## Powerful operation

New Holland compact diesels have power to spare. One look under the hood and you'll understand why. Big cubic-inch displacement engines

take the work out of operating a tractor. These engines don't have to work as hard to generate equivalent horsepower. And lower-rated engine speeds means less stress, less noise, and superior fuel efficiency.

Model 1720 uses a three-cylinder engine, and Models 1920, 2120 and 3415 are powered by a four-cylinder diesel. You get quiet, fuel-efficient operation. And New Holland engines start fast, even in cold temperatures, thanks to a fast-heating glow-plug system.



# Outstanding performance in any gear



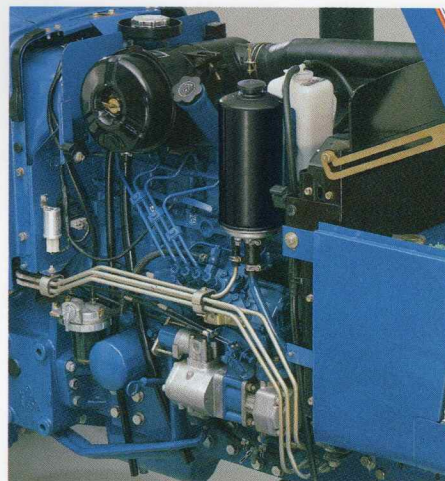
Our rugged 12x4 transmission provides four working ranges, with twelve forward and four reverse speeds to match any job. If you're working at extra-slow speeds, check out the optional dealer-installed creeper gear, with up to eight working speeds at less than one mile per hour.

The 12x12 synchronized shuttle transmission, optional on the 1720 and 1920, is perfect for any work that requires frequent change of direction. The synchronized shuttle shift (SSS) features twelve forward and twelve reverse speeds, all fully synchronized for "no-clash" shuttling. No matter what forward gear you're operating in, there's a matching reverse speed.

The 12x12 hydraulic shuttle-shift (HSS) is optional on the Model 2120. It offers a power-reversing feature that allows you to change direction without stopping and clutching. Simply move the dash-mounted shuttle lever to change direction.

Our exclusive Mode Command feature on the HSS provides two choices in shuttling modulation for greater efficiency. Choose the slower transition when shuttling at low speed or with light loads, and the faster transition when shuttling at high speeds with heavy loads.

The HSS features three ranges and four main gears, for twelve forward speeds. Each forward gear has a reverse gear that's slightly faster for loading and unloading.



*The larger CID engines in New Holland compact diesels deliver outstanding performance at lower engine speeds.*



*The exclusive Mode Command feature allows you to change shuttling modulation to match the job.*



*Dash-mounted main shift levers are within easy reach for simple gear changes.*

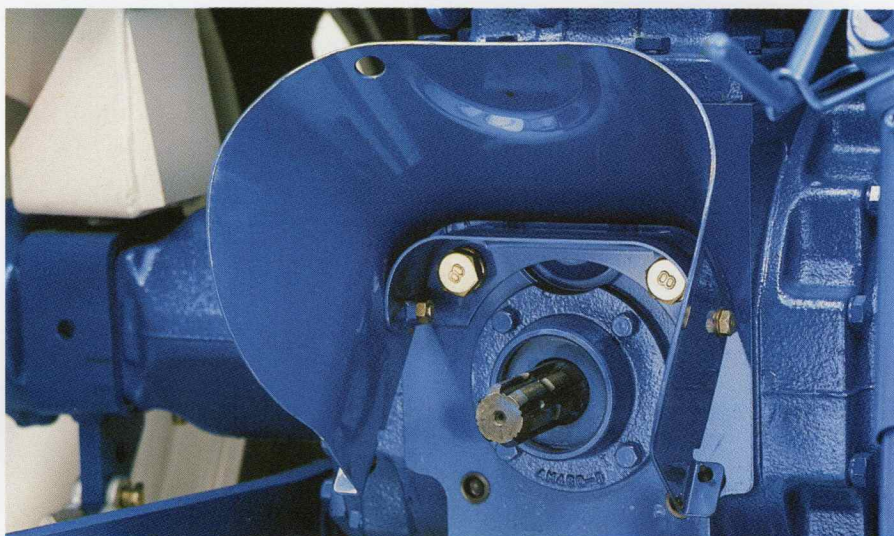
# Responsive control

Every New Holland compact diesel features an impressive hydraulic system that provides power for the 3-point hitch and remote cylinders whenever the engine is running. Thanks to generous flow, there's no need for an auxiliary pump to operate a loader, backhoe or any other piece of hydraulically powered equipment. A separate power steering pump means you're never siphoning hydraulic flow to steer that tractor.

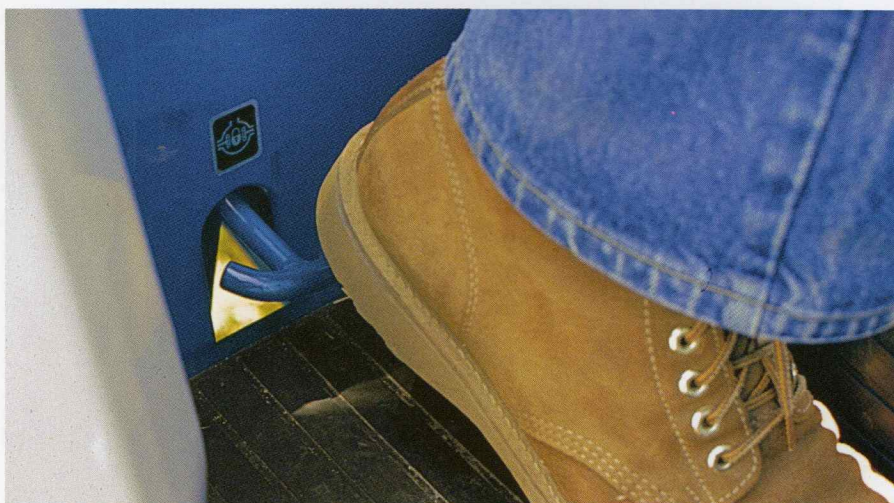
## Here are some other outstanding features:

- The standard Category I, 3-point hitch accepts a wide range of implements
- The adjustable top link makes hookup fast and easy
- An adjustable stop lets you return the control lever to a preset position
- A drop-control valve gives you adjustable implement lowering speed when using mounted implements
- A two-spool side-mounted remote valve simplifies loader, snow blower, or front blade hookup
- An optional remote valve with rear mounted coupler lets you operate a remote cylinder or hydraulic motor

*Front hydraulic outlets are a New Holland exclusive. Steel tubing – not rubber hoses which can pinch or tangle – connect control valves and remote couplers.*



*The flip-up PTO shield provides greater convenience when attaching PTO-driven implements.*



*Differential lock offers more positive traction in slippery conditions with a touch of the heel pedal.*

# We put power where you need it

From big axles to four-wheel drive, New Holland compact diesels give you power where you need it most. Induction-hardened rear axles are supported by strong cast housings for demanding torque loads. Sturdy, spur-gear, double-reduction final drives minimize driveline loads for trouble-free operation. A differential lock provides traction in wet or slippery conditions. And the New Holland power-take-off (PTO) system brings implements to life.

Four-wheel drive, optional on Models 1720 and 1920, delivers superior pulling power and improves productivity. Bevel gear design means a tighter turning radius, and the enclosed drive shaft eliminates wrapping problems and protects against dirt and water.

## Convenient Service

Simple to service, easy to maintain. That's what you get with a compact diesel tractor from New Holland. Refueling and daily oil checking are quick and easy. A handy access door lets you fill the fuel tank without lifting the hood. Routine service points are conveniently located on the right side of the tractor to simplify routine maintenance.



*An easy-to-install sunshade makes any job more comfortable.*



*A convenient fuel tank offers easy access.*

The entire hood raises and pivots forward for quick access to the engine, radiator, air cleaner and battery. No tools are required to remove side panels. A single drain petcock lets you empty the entire cooling system in one easy step. It doesn't get much easier than this.



*A handy toolbox provides convenient storage for the PTO cap and tools used for implement attachment.*



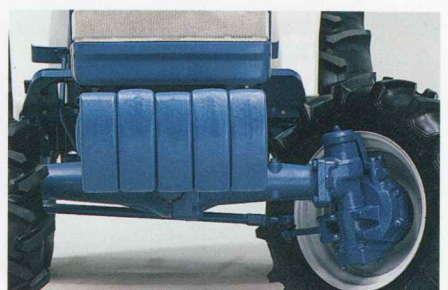
*Check the oil level without raising the hood.*



*Improve rear vision at night with this rear-mounted lamp.*



*A single-spool valve lets you operate a remote cylinder or hydraulic motor.*



*Front-end weights are easily added for more stability. Optional FWD improves traction and increases drawbar horsepower.*

# Designed to meet your needs

Customize your tractor with factory-installed options and dealer-installed attachments and accessories.

<b>Recommended New Holland tractor/implement combinations</b>	<b>1720</b>	<b>1920</b>	<b>2120</b>	<b>3415</b>
105A 52-in. Tiller	•	•		
105A 60-in. Tiller	•	•	•	•
105A 72-in. Tiller	•	•	•	•
702C 78-in. Front Blade	•			
702C 84-in. Front Blade		•	•	•
706 6-cu. ft. Reversible Rear Scoop	•	•		
706 10-cu. ft Reversible Rear Scoop			•	•
716B 72-in. Front-Mounted Snow Blower	•	•	•	•
716C 60-in. Rear-Mounted Snow Blower	•	•	•	•
716C 72-in. Rear-Mounted Snow Blower	•	•	•	•
757C 85-in. Backhoe	•			
906 Posthole Digger	•	•	•	•
914 72-in. Mid-Mount Finishing Mower	•	•		
918L 50-in. Flail Mower	•	•		
918L 60-in. Flail Mower	•	•		
918H 60-in. Flail Mower	•	•		
918H 71-in. Flail Mower	•	•	•	•
918H 93-in. Flail Mower			•	•
930B 60-in. Rear Finishing Mower	•	•		
930B 72-in. Rear Finishing Mower	•	•	•	•
951B 60-in. Rotary Cutter	•	•		
951B 72-in. Rotary Cutter	•	•	•	•
7308 Front Loader	•	•		
7309 Front Loader			•	•
57 Mounted Rake		•	•	•
166 Windrow Inverter	•	•	•	•
157 Hay Tedder	•	•	•	•
163 Hay Tedder	•	•	•	•
255 Rake Tedder			•	•
256/258/260 Hay Rakes	•	•	•	•
451/456 Sicklebar Mower	•	•	•	•
472 Mower-Conditioner			•	•
565 Square Baler			•	•
132 Bale Carrier	•	•	•	•
130 Box Spreader			•	•

Get behind the wheel of a compact diesel from New Holland and see why these tractors really are designed to work for you ... no matter what the job.

# Specifications

	1720	1920	2120	3415
<b>Engine</b>				
Gross Engine hp (kW)	27.7(20.6)*	33.3(24.8)*	42.6(31.7)*	47.5(34.9)*
Net Engine hp (kW)	26.5(19.8)*	32(23.9)*	40(29.8)*	44(32.4)*
PTO hp (kW) Manual Trans	23.5(17.5)*	28.5(21.3)*	34.5(25.7)*	38(27.9)*
Number of cylinders	3	4	4	4
Cubic-inch displacement (cc)	91.3(1496)	121.7(1995)	138.5(2269)	135.2(2216)
Rated rpm	2500	2500	2500	2600
<b>Fuel Capacity gal (L)</b>				
	8.5(32.2)	9.8(37.1)	11.1(42)	11.1(42)
<b>Transmission</b>				
Standard, speeds forward/reverse	12/4	12/4	12/4	12X4
Min./Max forward speed mph (km/h)	.7-12.8(1.2-20.6)	.8-14(1.3-22.5)	1-16(1.6-25.7)	1-16(1.6-25.7)
Optional	12x12 SSS	12x12 SSS	12x12 HSS	12x12 HSS
Min./Max forward speed, mph (km/h)	.8-12.5 (1.4-20.1)	.9-14.4(1.5-23.2)	1.1-16.5(1.8-26.2)	1.1-16.5(1.8-26.2)
Creeper Gear – optional	Dealer-installed	Dealer-installed	Dealer-installed	Dealer-installed
<b>Power Take-Off (PTO)</b>				
Rear PTO	Trans. 540 rpm (Live 540 rpm, Opt.)	Live 540 rpm	Live 540 rpm	Live 540 rpm
Mid PTO	N/A	N/A	N/A	N/A
<b>Hydraulics</b>				
Hydraulic pump capacity, gpm (lpm)	7.4(27.9)	7.4(27.9)	9.3(35)	6.5(24.6)
Power steering pump capacity, gpm (lpm)	2.8(10.6)	2.8(10.6)	2.8(10.6)	2.8(10.6)
Total flow of pumps, gpm (lpm)	10.2(38.6)	10.2(38.6)	12.1(45.8)	12.1(45.8)
3-point lift capacity, lbs (kg) @ hitch	2632(1194)	2795(1268)	4364(1979.5)	4364(1979.5)
3-point lift capacity, lbs (kg) 24" aft of hitch	1898(861)	2187(992)	3469(1573.5)	3469(1560)
Draft control	Dealer-installed	Dealer-installed	Standard	Standard
<b>Steering</b>				
Standard	Hydrostatic, power	Hydrostatic, power	Hydrostatic, power	Hydrostatic, power
<b>Brakes</b>				
	Wet disc	Wet disc	Wet disc	Wet disc
<b>Tire size (standard ag)</b>				
2-wheel drive, front	5x15	5.50x16	N/A	6x16
rear	11.2x24	13.6x24	N/A	13.5x28
4-wheel drive, front	7x14	7x16	8x18	N/A
rear	11.2x24	13.6x24	13.6x24	N/A
<b>Dimensions in. (cm)</b>				
Length (front to end of lower link)	121(308)	126(321)	137(349)	137(349)
Width (including std. tires)	55(140)	60(15)	63(160)	62(158)
Height (from top of ROPS)	87(218)	90(229)	89(227)	89(227)
Turning radius with brakes, 2WD	92(234)	103(261)	N/A	112(284)
FWD	91(232)	104(265)	107(272)	N/A
Turning radius without brakes, 2WD	105(267)	110(279)	N/A	121(306)
FWD	114(290)	116(295)	127(323)	N/A
Wheel tread settings, 2WD, front	44-58(111-146)	44-57(110-145)	N/A	48-72(122-183)
FWD, front	46(117)	46(6)	49.2(125)	N/A
Wheel tread settings, 2WD, rear	43-59(110-146)	46-61(116-155)	N/A	49-76(124-194)
FWD, rear	48-54(123-136)	46-61(116-155)	49-76(124-194)	N/A
Wheelbase, 2WD and FWD	65(165)	70(176)	75(190)	75(190)
Ground clearance (under trans.)	12(30) 2WD 12(30) FWD	13(32) 2WD 13(32) FWD	15(37) 2WD 14(36) FWD	15(37) 2WD N/A
<b>Shipping weight lbs (kg), 2WD</b>				
FWD	2491(1130) 2690(1220)	2849(1292) 3069(1392)	N/A 3858(1750)	3483(1583) N/A

\* Manufacturer's estimate.

NOTE: Dimensions and capacities may vary with tire size and four-wheel drive.

# Trust New Holland for quality, reliability and value

When you're looking for new tractors and equipment, go with the name you can trust. For more than a century, New Holland has created innovative, dependable products that have helped generations of customers become more productive and more profitable.

## Count on expert assistance

Your New Holland dealer is committed to helping you choose the equipment that's right for your operation.

Equipment designed, built and backed to meet your needs.

Your dealer will also help you secure the most cost-effective finance and lease options through New Holland Credit Company. And after the sale, you can count on your New Holland dealer to always be there with excellent service and top-quality parts to support your investment.

## Join millions of satisfied customers

When you purchase equipment from New Holland you'll be joining millions of satisfied customers. Customers who rely on their equipment to get the job done right.

For tractors and equipment, trust the company that delivers the best value for your hard-earned dollar. Trust New Holland.



## YOUR NEW HOLLAND DEALER



**NEW HOLLAND**

Design, materials and/or specifications are subject to change without notice and without liability therefor. Specifications are applicable to units sold in Canada, the United States, its territories and possessions, and may vary outside these areas.

Visit our website at [www.newholland.com/na](http://www.newholland.com/na)  
© 1998 New Holland North America, Inc.



Safety begins with a thorough understanding of the equipment. Always make sure you and your operators read the Operator's Manual before using the equipment. Pay close attention to all safety and operating decals and never operate machinery without all shields, protective devices and structures in place.

• 31172041 • 60040 • API • PRINTED IN U.S.A.