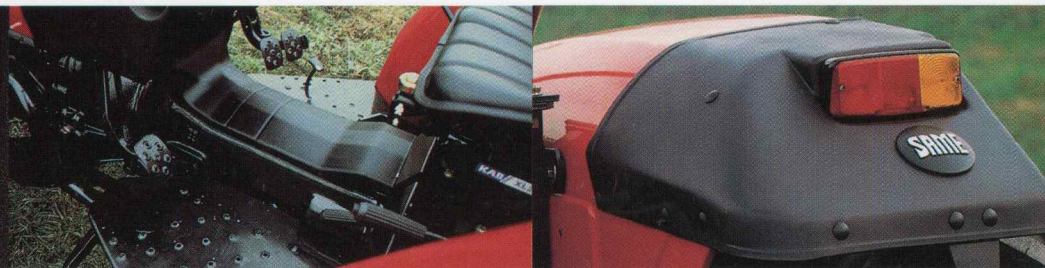
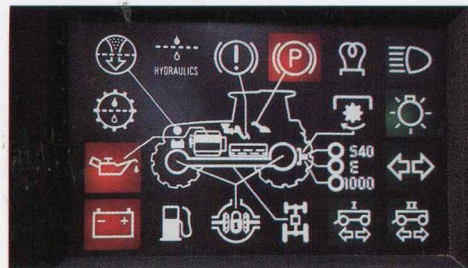


# ARGON 50-60-70





New lower Telene® hood, ample, practical driver's position with all control levers to the right, responsive hydrostatic steering are all features that combine to make the ARGON a harmoniously practical tractor able to guarantee only the highest standards of performance.

Wide footsteps fixed on rubber pads, pendant pedals, hydrostatic brakes, independent circuit steering; each detail is designed and constructed to ensure the very best in comfort and safety.

## Same Argon. **ERGONOMICS AND COMFORT.**





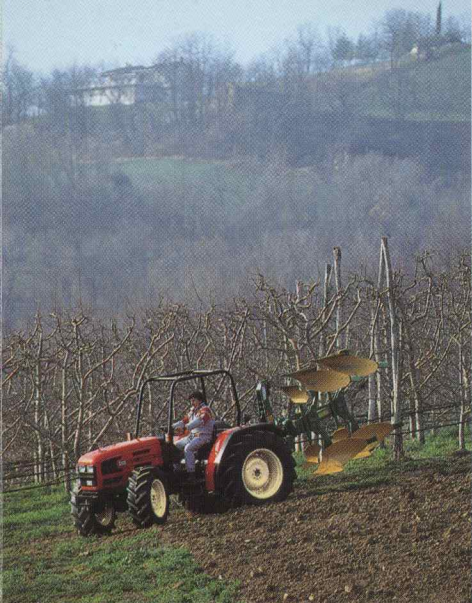
## Same Argon. ECONOMY AND POWER.

The ARGON 50/60/70 series are all equipped with engines featuring the same technological characteristics as those of high-powered tractors, to guarantee the highest operating performance standards, even at low speeds, not to mention absolute reliability in the most

varied of working conditions.

The SAME 1000 series engines fitted to the ARGON have low fuel consumption, but are extremely generous in terms of power and versatility: remarkable torque curves, with a maximum value that remains virtually constant between 1300 and 1700 rpm, and an air-oil cooling system to ensure reliable performance in even the most demanding climates, these are but a few of the features that guarantee ARGON's high productivity and total efficiency.





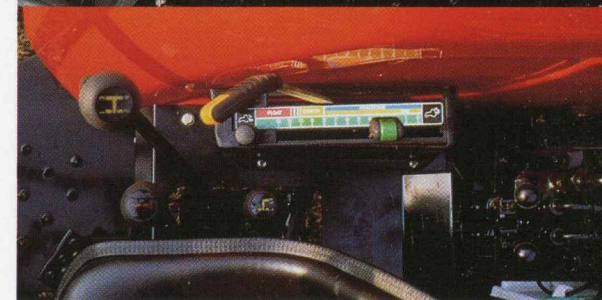
Transmission with forced lubrication, gearshift, synchronised underdrive and creeper are features designed for maximum reliability and practicality combined with exceptional responsiveness. The 2 rear P.T.Os. - one three-speed (540-540ECO-1000 rpm), the other Synchro with independent shaft for simultaneous use with the first - offer

great versatility and optimal use of tractor power. The rear lift, with its independent hydraulic 45 l. circuit, ensures draft, position and mix control of implements, just like in high-power tractor models. The 1000 series Same engines are all designed to minimize down time. All points requiring systematic attention are

## **Same Argon. RESPONSIVE AND VERSATILE.**



on the right hand side of the engine to cut maintenance time, simplify operations and ensure greater tractor handling economy.



 **SAME**<sup>®</sup>  
Rely on us.

Operating safety is ensured by braking and steering systems usually reserved for high-powered models: the oil-immersed brakes operate on all four wheels, while

## Same Argon. ESSENTIAL AND SAFE.

the independent circuit steering system guarantees easy, safe turning in all conditions, thanks to a steering angle of 55°.

ARGON is your ideal farming tool: with the 2 and 4 WD versions and 30 and 40 km/h transmission, you'll find the answer to all your requirements.

ARGON: the practical, reliable tractor offering performance, safety and comfort standards found only in higher class categories.



# Technical data

	ARGON 50		ARGON 60		ARGON 70	
	2WD	4WD	2WD	4WD	2WD	4WD
<b>ENGINE</b>						
SAME	1000.3 A		1000.3 A		1000.3 A	
Cylinders/Displacement	n°cc (cu ins) 3/3000 (183.06)		3/3000 (183.06)		3/3000 (183.06)	
Maximum Power at rated speed DIN 70020	kW/HP/rpm 37/50/2350		44/60/2350		51,5/70/2350	
Cooling system	mixed: air-oil		mixed: air-oil		mixed: air-oil	
Fuel injection pump: monocylinder, immersed type	●		●		●	
Silencer under bonnet with horizontal exhaust	○		○		●	
Silencer with vertical exhaust	●		●		●	
New lower bonnet in Telene®	●		●		●	
Fuel capacity	litre (Imp gals) 58 (12.8)		58 (12.8)		58 (12.8)	
<b>TRANSMISSION</b>						
4 speeds synchromesh gearbox and synchronised inverter	●		●		●	
Speeds: 8 FWD + 8 REV (30 km/hour)	●		●		●	
Speeds: 12 FWD + 12 REV with super reduction (30 km/hour)	○		○		○	
Speeds: 16 FWD + 8 REV with synchromesh splitter (40 km/hour)	○		○		○	
Speeds: 16 FWD + 8 REV with s. red. an synch. spl. (40 km/hour)	○		○		○	
Forced lubrication and rear epicycloidal reduction gear	●		●		●	
PTO: fully independent clutch	●		●		●	
PTO 540/540E	rpm ●		rpm ●		rpm ●	
PTO 540/1000	rpm ○		rpm ○		rpm ○	
PTO 540/540E/1000	rpm ○		rpm ○		rpm ○	
Ground speed with independent output shaft	○		○		○	
<b>BRAKES AND STEERING</b>						
Rear hydraulically operated oil-immersed disc brakes	●		●		●	
Front hydraulically operated oil-immersed disc brakes	○		○		○	
Parking brake (independent from foot brakes)	●		●		●	
Hydraulic trailer braking	○		○		○	
Hydrostatic independent reactive power steering	●		●		●	
<b>FRONT AXLE</b>						
Front differential lock	○		○		○	
55° steering angle	●		●		●	
<b>HYDRAULIC SYSTEM</b>						
Position, draft and MIX control	●		●		●	
Lift capacity	kg (lbs) 2900 (6393)		2900 (6393)		2900 (6393)	
Pump capacity std./opt.	l/min (gpm) 33 (7.3)		33 (7.3)		33 (7.3)	
Pump capacity optional (with three spool valve)	l/min (gpm) 45 (9.9)		45 (9.9)		45 (9.9)	
Double acting spool valve standard/optional	2/3		2/3		2/3	

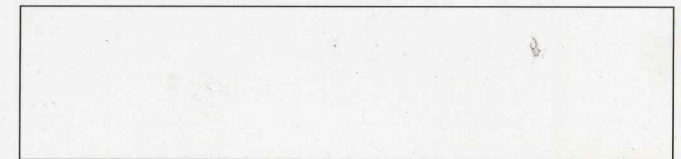
● = Standard ○ = Optional

	ARGON 50		ARGON 60		ARGON 70	
	2WD	4WD	2WD	4WD	2WD	4WD
<b>BODY</b>						
Check Panel, suspended pedals, gear levers to driver's right	●		●		●	
Safety frame	●		●		●	
Folding safety frame (only with 420/70 R 24 rear tyres)	●		●		●	
<b>TYRES 2WD</b>						
front 6.50-16	●					
front 6.00-19	○		○			
front 7.50-16	○		●			
front 7.50-16			○		●	
front 6.50-20			○		○	
front 7.50-18					○	
<b>TYRES 4RM</b>						
front 300/70 R 20			●			
front 8.3 R 24			○			
front 320/70 R 20			○		●	
front 360/70 R 20					○	
front 11.2 R 24					○	
front 11.2 R 24					○	
Rear mudguards extensions	○		○		○	
<b>DIMENSIONS AND WEIGHT (with rear tyres)</b>	<b>380/70R28</b>		<b>420/70R28</b>		<b>420/70R30</b>	
Overall length without/with linkage	(mm) 3085/3380		(mm) 3240/3590		(mm) 3270/3590	
	(ins) 121.5/133.1		(ins) 127.5/141.3		(ins) 128.7/141.3	
Minimum/maximum width	(mm) 1640/2040		(mm) 1780/2180		(mm) 1780/2180	
	(ins) 64.6/80.3		(ins) 70.1/85.8		(ins) 70.1/85.8	
Height to top of hood/steering/frame	(mm) 1355/1505/2245		(mm) 1400/1540/2275		(mm) 1425/1565/2300	
	(ins) 53.3/59.3/88.4		(ins) 55.1/60.6/89.6		(ins) 56.1/61.6/90.6	
Ground clearance	(mm) 390 335		(mm) 440 355		(mm) 445 380	
	(ins) 15.4 13.2		(ins) 17.3 14.0		(ins) 17.5 15.0	
Wheel base	(mm) 1975 1925		(mm) 2105 2055		(mm) 2105 2055	
	(ins) 77.8 75.8		(ins) 82.9 80.9		(ins) 82.9 80.9	
Minimum/maximum front track	(mm) 1230/1530 1340/1740		(mm) 1270/1570 1340/1740		(mm) 1270/1570 1440/1740	
	(ins) 48.4/60.2 52.8/68.5		(ins) 50.0/61.8 52.8/68.5		(ins) 50.0/61.8 56.7/68.5	
Minimum/maximum rear track	(mm) 1300/1700		(mm) 1400/1800		(mm) 1400/1800	
	(mm) 51.2/66.9		(mm) 55.1/70.9		(mm) 55.1/70.9	
Maximum allowable weight	(kg) 3700 3900		(kg) 4200 4600		(kg) 4200 4600	
	(lbs) 8157 8598		(lbs) 9259 10141		(lbs) 9259 10141	
Weight (with frame)	(kg) 1940 2150		(kg) 2060 2300		(kg) 2070 2320	
	(lbs) 4277 4740		(lbs) 4541 5071		(lbs) 4564 5115	
<b>SPEED RANGES</b>						
Speeds in km/hour (mph) at engine speed of 2350 rpm with 420/70 R 30 rear tyres						
12 FWD + 12 REV (30 km/hour)	Min.		Max.		24 FWD + 12 REV (40 km/hour)	Max.
	km/h	(mph)	km/h	(mph)	km/h	(mph)
Super reduction	0.22	(0.13)	0.88	(0.54)	Super reduction	0.24 (0.14) 1.16 (0.72)
Normal	1.39	(0.86)	5.55	(3.44)	Normal	1.49 (0.92) 7.34 (4.56)
High	7.67	(4.76)	30.51	(19.00)	High	8.19 (5.08) 40.39 (25.00)

Technical data and illustrations are approximations only. SAME, in its effort to give the product that you require, reserves the right to update this information at any time without notice.



**Akros** SPECIALISED LUBRICATION FOR SAME



Head office: Viale F. Cassani, 15 - 24047 Treviglio (BG) - Tel. (0363) 4211 - WEB Site: [www.same-tractors.com](http://www.same-tractors.com)