

EXPLORER II 70-80-90

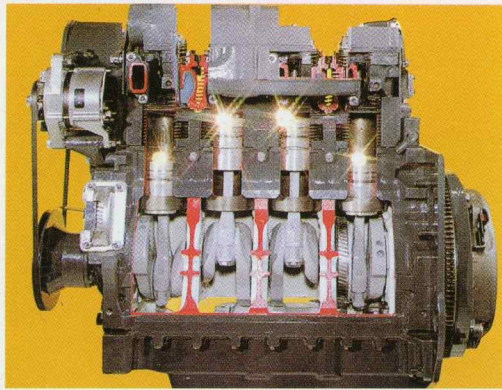
TOP EXPLORER-II SAME

80



SAME

EXPLORER II TOP. THE M



TOP ENGINES

Instant power.

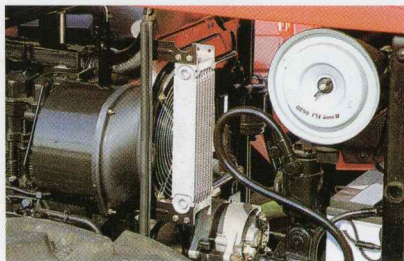
- Great flexibility with unfailingly low fuel consumption (200 g/kWh).

Injection system.

- Inline pumps embedded directly in the block.

Triple cooling system.

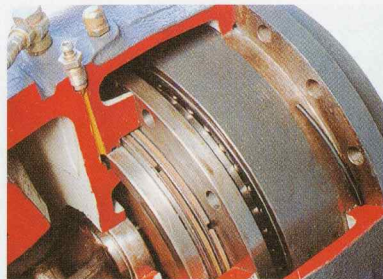
- Cylinder heads and upper section of block cooled by forced air.
- Lower section of block cooled by recirculating oil.
- Pressurized oil jets directed at pistons from beneath.



Comprehensive P.t.o. equipment package.

- Generous variety of P.t.o. speeds equal to the most demanding of tasks and with low fuel consumption too, thanks to economy speeds.
- Independent live P.t.o. permanently available.
- Option of front P.t.o. combined with front lift - an investment with profits guaranteed.

TOP P.T.O.



TOP BRAKES

- Oil-immersed discs for longer life, with no overheating.
- Hydrostatic operation for a powerful and safe braking action.
- Brakes applied independently on all four wheels.

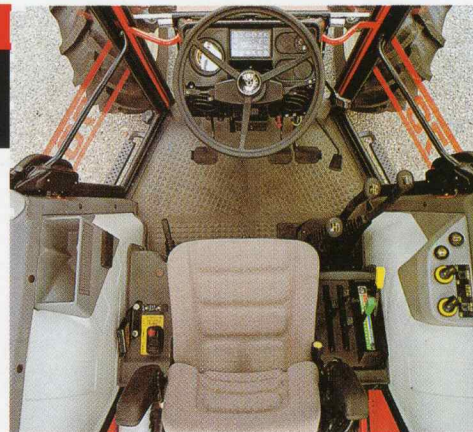


MAXIMUM REQUIREMENT.



TOP COMFORT AND ERGONOMICS

- Sound-insulated and heated cab affording superior comfort.
- Matchless ventilation.
- Cab structure suspended on 4 robust damper struts.
- Driving made easy and effortless by a spacious platform, fully adjustable seat and steering column, and electrohydraulic controls.
- Option of reverse console on 90 HP model.

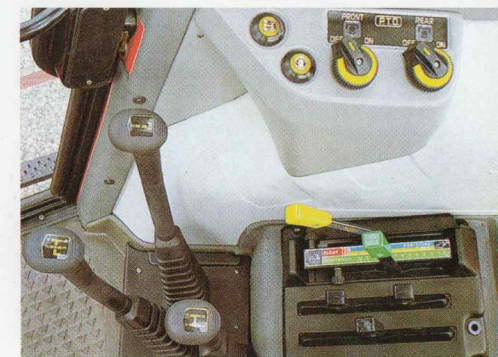
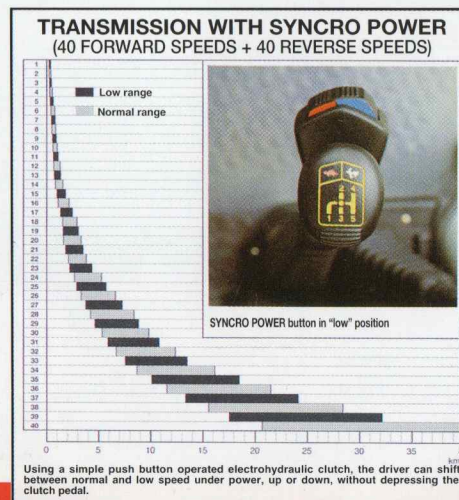


TOP LIFT AND HYDRAULICS

- Rear lift with draft-position-and-mix controls.
- Generous rated lifting capacity (3450 kg).
- Uncomplicated and functional hydraulic system.

TOP TRANSMISSION AND CLUTCH

- Hydrostatically operated clutch.
- Super-compact transmission with 4 or 5 speed gearbox.
- Option of SYNCRO POWER shift allowing adjustment of ground speed under power, with synchromesh shuttle giving selection of all ratios in both forward and reverse.



Specifications

| TECHNICAL DATA | EXPLORER II TOP 70 4WD | EXPLORER II TOP 80 4WD | EXPLORER II TOP 90 4WD |
|---|------------------------------|------------------------------|------------------------------|
| ENGINE | | | |
| SAME | 1000.4 A | 1000.4 A | 1000.4 AT |
| Cilinders / Displacement (n°/cm³) | 4/4000 | 4/4000 | 4 Turbo/4000 |
| Max rated power (kW HP/rpm) | 51,5/70/2350 | 59/80/2500 | 65/88/2500 |
| Cooling | mixed: air and oil | mixed: air and oil | mixed: air and oil |
| Inline fuel injection pumps | ● | ● | ● |
| Exhaust silencer under hood, vertical tail-pipe | ● | ● | ● |
| Fuel tank capacity (l) | 90 | 110 | 110 |
| TRANSMISSION | | | |
| Synchromesh gearbox and shuttle | ● | ● | ● |
| 24fwd + 12rev with underdrive | ● | ● | ● |
| 40fwd + 40rev with SYNCRO POWER and creeper | ○ | ○ | ○ |
| 40 km/h top speed | ● | ● | ● |
| Forced lubrication | ● | ● | ● |
| P.t.o. clutch with hydraulic servo | ● | ● | ● |
| Rear P.t.o. 540/1000/540E/1000E rpm | ● | ● | ● |
| Independent live P.t.o. | ● | ● | ● |
| Structurally INTEGRATED push-button operated front P.t.o. (1000 rpm) | ○ | ○ | ○ |
| Electrohydraulically operated differential locks, 4WD coupler and P.t.o. clutch | ○ | ○ | ○ |
| BRAKES AND STEERING | | | |
| Hydrostatically actuated oil-immersed discs on rear wheels | ● | ● | ● |
| All-wheel hydrostatic braking action | ● | ● | ● |
| Hydrostatic power steering with adjustable column | ● | ● | ● |
| FRONT AXLE | | | |
| Front and rear differential locks | ● | ● | ● |
| 50° steering angle | ● | ● | ● |
| HYDRAULIC LIFT | | | |
| Max lifting capacity (kg) | 3450 | 3450 | 3450 |
| Rated flow of pump (l/min) | 35 | 35 | 35 |
| Auxiliary spool valves (n° ways) | 4 | 4 | 4 |
| Structurally INTEGRATED front lift rated capacity 1500 kg | ○ | ○ | ○ |
| DRIVING POSITION | | | |
| Check Panel | ● | ● | ● |
| Suspended pedals, shift levers located to one side | ● | ● | ● |
| Roll bar | ● | ● | ● |
| Sound insulated cab of original design | ○ | ○ | ○ |
| Eco-friendly air conditioning | ○ | ○ | ○ |
| Reverse console | — | — | ○ |

● = Standard ○ = Optional

| TECHNICAL DATA | EXPLORER II TOP 70 4WD | EXPLORER II TOP 80 4WD | EXPLORER II TOP 90 4WD | | | | | |
|--|------------------------------|------------------------------|---|------------|------------------------|-----------|-----------|-------|
| TYRES | | | | | | | | |
| 12.4 R 24 front | ● | — | — | | | | | |
| 360/70 R 24 front | ○ | — | — | | | | | |
| 14.9 R 24 front | — | ● | ● | | | | | |
| 420/70 R 24 front | ○ | ○ | ○ | | | | | |
| 16.9 R 24 front | — | — | ○ | | | | | |
| 12.4 R 28 front | — | ○ | ○ | | | | | |
| 16.9 R 30 rear | ● | — | — | | | | | |
| 480/70 R 30 rear | ○ | — | — | | | | | |
| 16.9 R 34 rear | — | ● | ● | | | | | |
| 480/70 R 34 rear | ○ | ○ | ○ | | | | | |
| 18.4 R 34 rear | — | — | ○ | | | | | |
| 13.6 R 38 rear | — | ○ | ○ | | | | | |
| DIMENSIONS AND WEIGHTS with rear tyre size: | 16.9 R 30 | 16.9 R 34 | 16.9 R 34 | | | | | |
| Maximum length without links / with links (mm) | 3700 / 3980 | 3780 / 4040 | 3780 / 4040 | | | | | |
| Minimum / maximum width (mm) | 1950 / 2450 | 1950 / 2550 | 1950 / 2550 | | | | | |
| Overall height at hood/Roll bar / cab (mm) | 1565 / 2450 / 2500 | 1625 / 2550 / 2600 | 1625 / 2550 / 2600 | | | | | |
| Ground clearance (mm) | 390 | 450 | 450 | | | | | |
| Wheelbase (mm) | 2280 | 2320 | 2320 | | | | | |
| Front track min. / max. (mm) | 1440 / 2130 | 1430 / 2140 | 1430 / 2140 | | | | | |
| Rear track min. / max. (mm) | 1500 / 2000 | 1500 / 2100 | 1500 / 2100 | | | | | |
| Minimum turning radius with brakes / without brakes (mm) | 2880 / 4250 | 2950 / 4950 | 2950 / 4950 | | | | | |
| Weight including Roll bar / cab (kg) | 2870/3070 | 3180/3380 | 3180/3380 | | | | | |
| SPEED RANGES Ground speeds in km/h at maximum power output | | | | | | | | |
| Transmission with SYNCRO POWER with 16.9 R 34 rear tyres | | | Transmission with underdrive with 16.9 R 34 rear tyres | | | | | |
| 40 FWD + 40 REV | FWD | REV | FWD | REV | 24 FWD + 12 REV | AV | RM | |
| 1 SR LOW | 0,34 | 0,36 | 1 N | 3,57 | 3,72 | 1 L MR | 1,41 | |
| 1 SR | 0,40 | 0,42 | 5 L | 3,87 | 4,03 | 1 L | 1,67 | 1,74 |
| 2 SR LOW | 0,51 | 0,53 | 2 N LOW | 4,54 | 4,72 | 2 L MR | 1,88 | |
| 2 SR | 0,59 | 0,62 | 2 N | 5,29 | 5,51 | 2 L | 2,22 | 2,31 |
| 3 SR LOW | 0,67 | 0,70 | 3 N LOW | 6,03 | 6,28 | 3 L MR | 2,3 | |
| 3 SR | 0,79 | 0,82 | 3 N | 7,04 | 7,33 | 3 L | 2,72 | 2,83 |
| 4 SR LOW | 0,89 | 0,93 | 4 N LOW | 7,96 | 8,29 | 4 L MR | 3,29 | |
| 1 L LOW | 0,96 | 1,00 | 1 V LOW | 9,27 | 9,65 | 4 L | 3,89 | 4,05 |
| 4 SR | 1,04 | 1,08 | 4 N | 9,29 | 9,67 | 1 N MR | 4,80 | |
| 1 L | 1,12 | 1,17 | 5 N LOW | 10,56 | 11,00 | 1 N | 5,32 | 5,54 |
| 5 SR LOW | 1,18 | 1,23 | 1 V | 10,81 | 11,26 | 2 N MR | 6,00 | |
| 5 SR | 1,38 | 1,43 | 5 N | 12,32 | 12,83 | 2 N | 7,08 | 7,38 |
| 2 L LOW | 1,42 | 1,48 | 2 V LOW | 13,73 | 14,30 | 3 N MR | 7,34 | |
| 2 L | 1,66 | 1,73 | 2 V | 16,02 | 16,68 | 3 N | 8,67 | 9,03 |
| 3 L LOW | 1,89 | 1,97 | 3 V LOW | 18,27 | 19,02 | 4 N MR | 10,5 | |
| 3 L | 2,21 | 2,30 | 3 V | 22,31 | 22,19 | 4 N | 12,40 | 12,92 |
| 4 L LOW | 2,50 | 2,60 | 4 V LOW | 24,09 | 25,09 | 1 V MR | 13,64 | |
| 4 L | 2,92 | 3,04 | 4 V | 28,11 | 29,28 | 1 V | 16,12 | 16,79 |
| 1 N LOW | 3,06 | 3,19 | 5 V LOW | 31,98 | 33,31 | 2 V MR | 18,15 | |
| 5 L LOW | 3,32 | 3,45 | 5 V | 37,31 | 38,86 | 2 V | 21,45 | 22,34 |
| | | | | 40,00* | | 3 V MR | 22,22 | |
| | | | | | | 3 V | 26,26 | 27,35 |
| | | | | | | 4 V MR | 31,79 | |
| | | | | | | 4 V | 37,96 | 39,11 |
| | | | | | | | 40,00* | |

SR = Creeper L = Low N = Normal V = High MR = Mini reduction (underdrive) * Ground speed at maximum engine output



SPECIALISED LUBRICATION



Headquarters : Viale F. Cassani, 15 - 24047 Treviglio (BG) - Tel. (0363) 4211