

**SILVER 80 - 90 -100,4 -100,6**



Revolution on the move



# GOOD LOOKS, GOOD FEEL

Even at first glance, the Silver suggests a genuinely new departure in the world of medium horsepower tractors. Viewed from any angle, its solid and streamlined look exudes strength and agility. The hand of designer Giugiaro is unmistakable, with the contemporary and the functional both firmly in evidence. First to catch the eye is that remarkable hood, plunging forward to give maximum visibility. Then the individual details, each one an integral and crucial part of the overall design. And the position of the exhaust tail pipe too, close to the cab upright: another important statement of all-round functional advantage, which in turn signifies maximum well-being for the driver, maximum exploitation of the machine's potential, and maximum dependability. The use of materials



# AN EXTREMELY FUNCTIONAL DESIGN

like **Telene**<sup>®</sup>, for example, which is more resistant to scratches, easier to clean and – best of all – unaffected by rust, helps to maintain the vehicle in top condition over time. A new self-unloading air cleaner favours the removal of dust from air drawn into the filter, with the result that maintenance is greatly reduced. And to keep refuelling stops to an absolute minimum, larger capacity tanks have been fitted to every machine across the range, so that with a Silver 80, for instance, you can keep going for 10 hours and more. But to appreciate all that your new tractor has to offer, why not simply climb aboard and see for yourself.

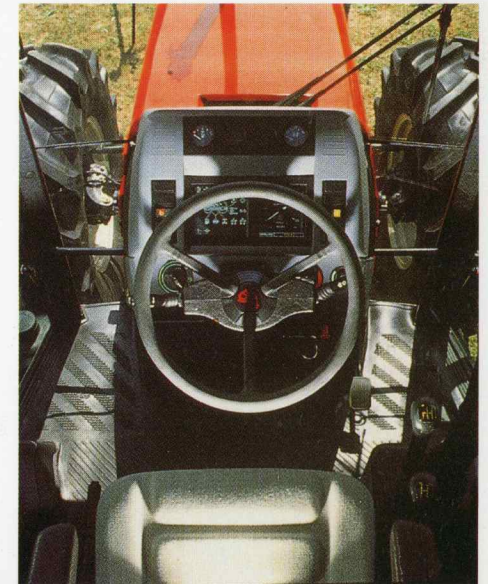


## Comfort that dominates the field

The driver seat of the new Silver is anatomically contoured and air-sprung, adjustable (as is the steering wheel), and able to absorb every bump in the ground; just try it for a few moments, and you'll sense that there really could be a way of putting in long hours without your back paying the price... Now take a look at the console and see how the controls are laid out, with everything easy to see and easy to read: many of them are **grouped together on the right hand armrest, so that all the advantages of electronic control will be at your fingertips.**

Now imagine you're going to be out in temperatures below freezing or under a baking hot sun: and think of the relief at knowing there's an air conditioner of the latest eco-friendly generation that will distribute the air around the cab and ensure you have exactly the climate you want, even with a difference between

inside and outside temperatures as much as 22 °C. And what about the pleasure of working in peace and quiet? Well, the **Silver cab is insulated to keep the noise level below 76 decibels.** Should you happen to choose your Silver without a cab, you can still count on the protection of a robust and stylish roll bar. So, now you can begin to appreciate the Same concept of "High Comfort".



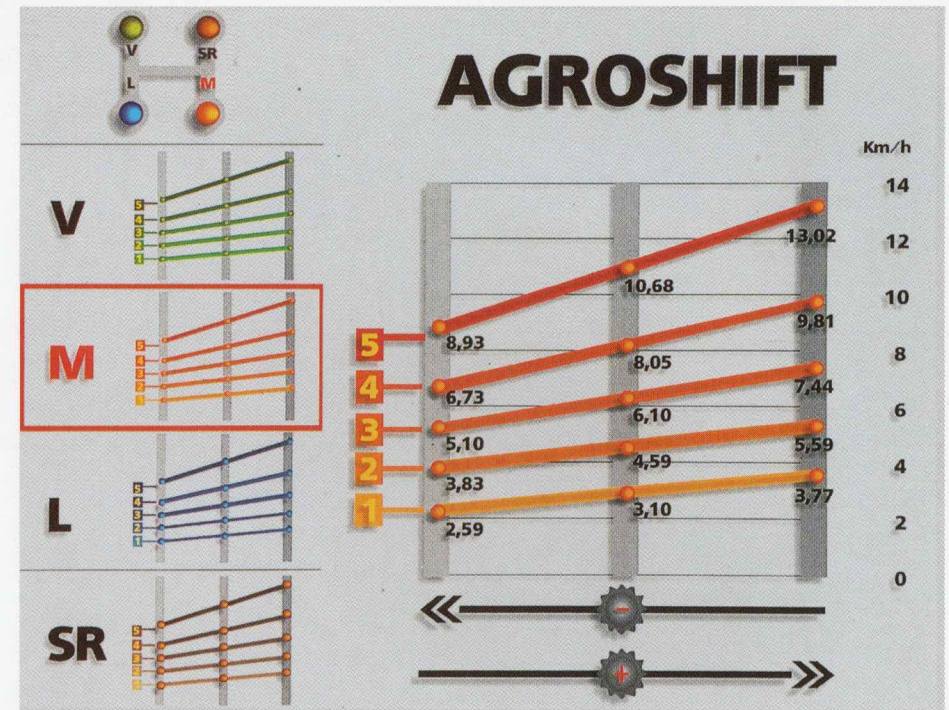
# AGROSHIFT

## THE PERFECT DIALOGUE BETWEEN MAN AND MACHINE

**The right speed and the right power, whatever the conditions**

The Agrosift transmission is designed to give you the right ratio in any situation, never too high or too low for the job you happen to be doing. Better still, you can exploit all the available gears to equally good effect in both forward and reverse, thanks to a synchromesh shuttle that is both reliable and easy to use. The beauty of Agrosift is that it gives you the facility of shifting under power across a band of three fine speeds

on each nominal ratio. This means in practice that having selected the speed range best suited to the work in hand, you can trim your ground speed continuously to the required draft force simply by pressing a button on the shift lever, without having to declutch. In addition, the Agrosift system can be operated from a new multifunction control handset mounted to the seat armrest, which also has Up/Down



buttons for the hydraulic lift arms and a set of buttons governing the engine revolutions and the throttle. In short, the control of the machine is at your fingertips, so that your mind and energies can be dedicated entirely to the job.

# HYDRIVE

## CUTTING EDGE TECHNOLOGY WITHIN ARMS REACH

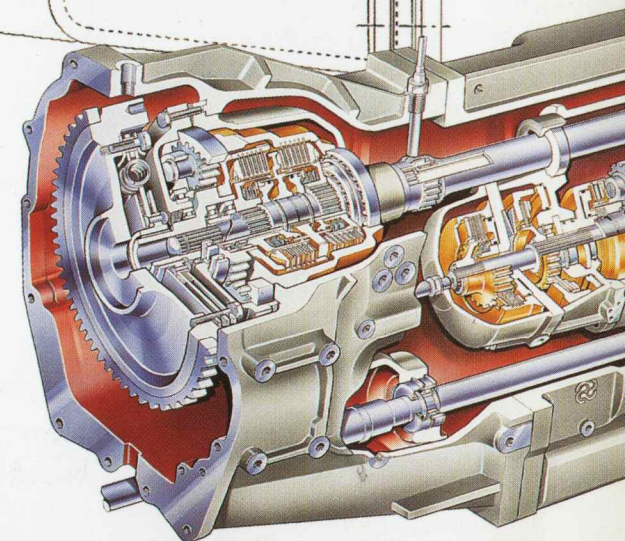
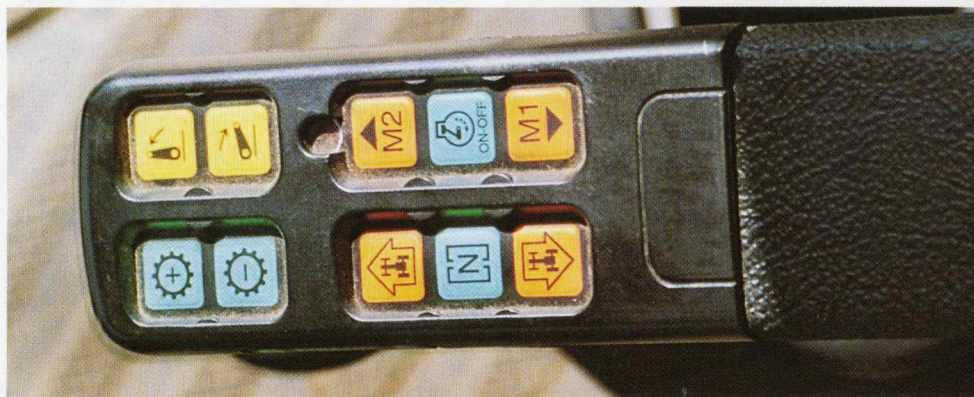
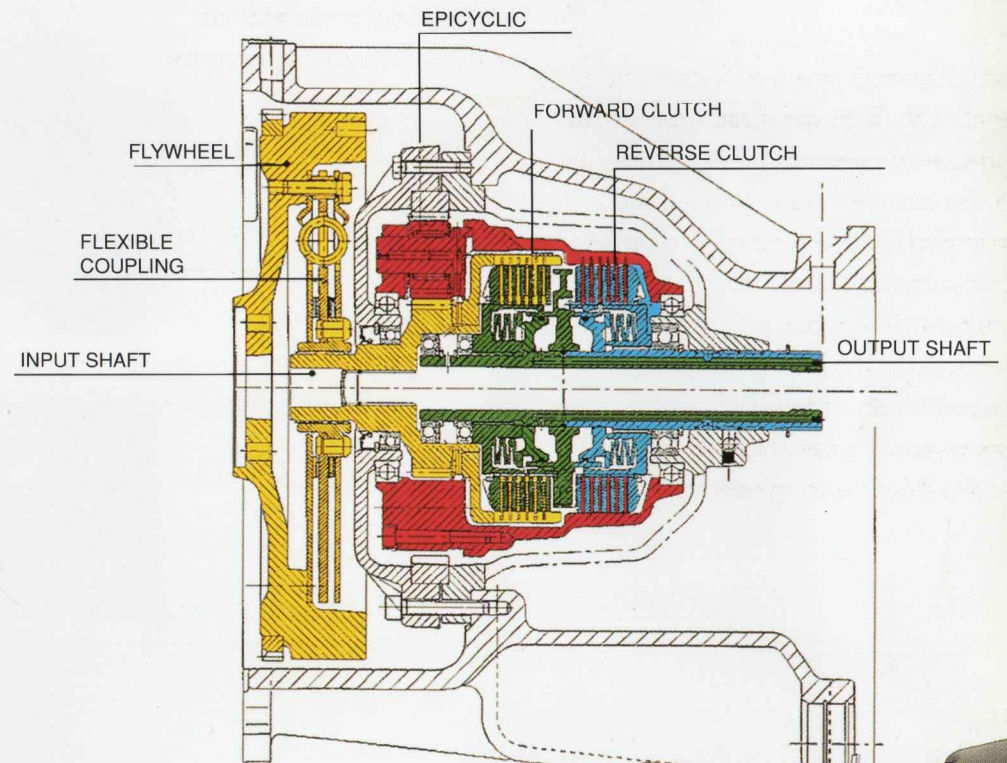
### And perfect modulation

Hydrive can lay claim to being the last word in hydraulic shuttle systems for mechanical drives, and with good reason. It uses not one, but **two clutches: two multiple disc assemblies, one for forward**

**drive, one for reverse.** The supreme advantage for you the driver is that you have no fewer than 60 speeds to choose from in either direction, and the smoothest imaginable change between forward and reverse. And small wonder, given that Hydrive is also a gem of hi-tech electronics: to select forward or reverse, simply press the button on a handily located steering column stalk, or the corresponding button of the **armrest control.**

When you select a change of direction on the move (at speeds up to 10 km/h), an electronic control unit responds immediately by decelerating the machine smoothly

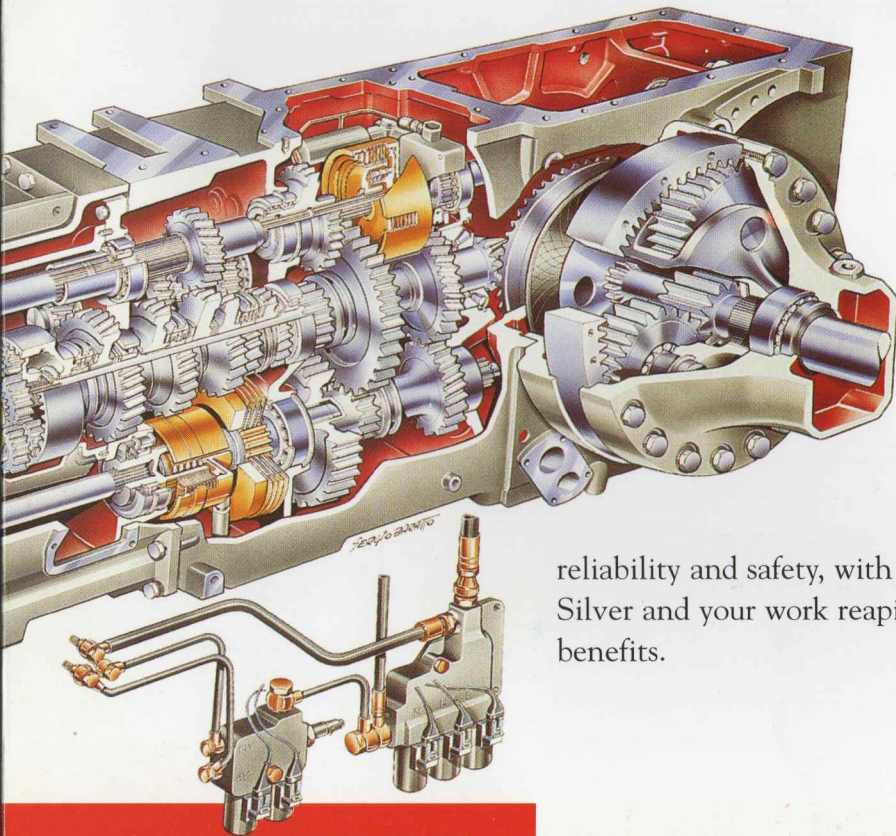
until the shuttle can safely engage, and then accelerating away just as smoothly in the opposite direction, with no jerks or jolts felt either through the mechanical components or through your back...



## Two clutches of unlimited durability

With Hydrive you can forget about the clutch. You can forget about the business of operating it – no need to use the conventional pedal, unless particularly close control is required – but more especially you can forget about servicing it, because the two oil-immersed “long life” disc assemblies are virtually maintenance free and will always be 100% effective in operation.

In a nutshell, the combination of Agrosift and Hydrive spells exceptional standards of manoeuvrability, long term



reliability and safety, with your Silver and your work reaping the benefits.



# S.B.A. AND ELECTRONIC LIFT

## EQUIPPING YOU COMPREHENSIVELY

### The Silver takes charge of your every requirement

The new rear hydraulic lift offers you truly exceptional performance. For example, an exclusive damper system eliminates implement bounce to give you peace of mind on the highway. And then there is the sheer strength of the structure overall, which gives your Silver a considerable lifting capacity. But that's not all: with the new lift, you can select the type of control best suited to the work in hand, combining any two of three parameters: draft, position and wheelslip.

The Silver is also equipped with a Power Take-Off that will drive any implement designed to operate at the familiar speeds of 540 and 1000 rpm, these can also be selected in economy mode; in practice this means reducing the crankshaft speed so that only the power effectively needed is utilised, which in turn signifies lower fuel consumption and less punishment for the machine. Independent groundspeed P.t.o. is also provided at the rear. Naturally enough, Silver machines can also be equipped with a front

lift and P.t.o., of which the structure is incorporated completely into the chassis, and the arms are adjustable so as to accommodate different sizes of implement. This means you can carry out two or more operations simultaneously, saving time, fuel and energy. And by making fewer passes, you reduce compaction of your soil.

### Electronics: a friend in a million

Electronic control is the Same choice for implements too. A choice designed to guarantee you maximum precision and ease of use, with the lift links operated entirely by way of push button controls



grouped together on an ergonomically designed console. In addition, the Silver is the only medium horsepower tractor equipped with S.B.A., an automatic four wheel drive and differential lock control system patented by Same. Selecting S.B.A., four wheel drive is engaged and the wheels continue to turn as one until conditions (picked up by electronic sensors) dictate that the front axle should be disengaged or the differential lock released. Now doesn't that strike you as being a good example of "friendly" electronics?



# SILVER 100.6 SUPER

All propulsion units utilised in the Silver range carry the full impact of Same's technological research in terms of **power, flexibility and operating economy**. But for some users traction is an even more important consideration, and if you are one of these, Same has the ideal package: **the new 6-cylinder Silver 100 HP, a machine** equal to those ultra-demanding duties where every available unit of horsepower is converted into pure traction. **A longer wheelbase and bigger tyres** help you beat the most taxing jobs and negotiate the trickiest soils. Boasting the **best power-to-weight ratio of its class**, the Silver 100.6 Super affords the perfect balance of



# DEDICATED TO THOSE LOOKING FOR THE ULTIMATE

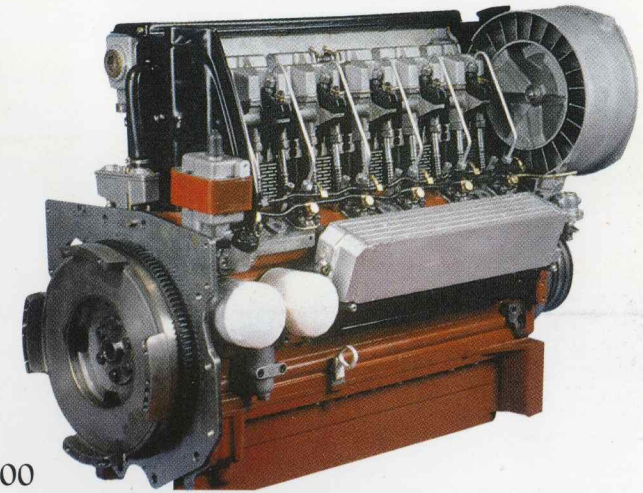
a light touch combined with muscle and high efficiency. The transmission features all the innovations of the Silver range, together with even greater mechanical strength. Like other Silver models, the 100.6 Super has **electronic rpm control** which allows you, at the touch of a button, to enter and save the engine speed best suited to the job in hand, and to retrieve it whenever you need. This means greater freedom, but

more importantly it means a safer way of working, because you can concentrate better on other things.

The strong point of the Silver 100.6 Super is its engine.

**6 litres displacement giving 100 HP at 2500 rpm**, and with a generous torque rise of 31%.

Never have such levels of power, comfort and stamina been achieved in a medium range horsepower tractor. With its **mixed air and oil**



**cooling system** and a **170 litre fuel tank**, in fact, your six-cylinder Silver guarantees you hours of uninterrupted work at full power and full throttle.



# CHOOSE YOUR MACHINE

## NIMBLE AND VERSATILE

### An answer to so many questions

Versatility is the number one quality that anyone looks for in a medium horsepower tractor. And versatility is the Silver's strength. A range of standard production versions and horsepower ratings that can be described nonetheless as "customised", designed to satisfy a multiplicity of requirements. Produced in 80, 90 and 100 HP versions powered by 4-cylinder engines, with the 100 HP available also in a 6-cylinder version, the Silver offers a variety of equipment packages, from the conventional to the very latest solutions utilising hi-tech electronics, and a wide range of options.

### Total versatility already a reality

You will have realised by now that you can count on the Silver to perform any kind of task, however demanding. Indeed the solutions are endless. But for Same, total versatility goes well beyond the mere concept of "adapting to requirements". The bottom line is to come up with the best possible answer, whatever the problem. Which also means the most effective, and the most dependable. For example, the three-point linkage has a generous 4700 kg rated lift capacity, whilst the front axle is rated 3400 kg so you can fit a no-nonsense front loader, and has a steering angle of 50° to give you supreme manoeuvrability even in the most restricted of spaces. The front lift is rated 2000 kg at the link ends, and functions also as the frame for a 400 kg front ballast weight, which can be fitted and removed in moments using a hydraulic hitch facility. And with a

## THE SILVER RANGE

	PLATFORM		CAB		REV.+CAB.
	2RM	DT	2RM	DT	
<b>80</b>	●	●	●	●	
<b>90</b>	●	●	●	●	●
<b>100.4</b>		●		●	
<b>100.6</b>		●		●	

top speed of 40 km/H on the road, the Silver will certainly lose no time in getting you from A to B. Naturally, with such generous performance, there must be brakes to match. The four independent disc assemblies operate immersed in oil, so that heat is not a problem, and will bring you to a stop powerfully and safely in any situation.

Finally, all models of the Silver

range have an enviable power to weight ratio, carrying a modest 39 kg per HP, which does much to alleviate the problem of soil compaction. And if all this were not enough, there is the quiet confidence of having a famously reliable and tough machine that requires the bare minimum of servicing.



TECHNICAL SPECIFICATION	SILVER 80		SILVER 90		SILVER 100.4		SILVER 100.6	
	2WD(*)	4WD	2WD(*)	4WD	4WD		4WD	
<b>ENGINE</b>								
SAME	1000.4 A4		1000.4 AT2		1000.4 AT11		1000.6 A1	
Cylinders/displacement/air intake	n°/cm³		4/4000/aspirated		4/4000/turbo		4/4000/turbo interc.	
Maximum rated power	kW/HP/rpm		59/80/2500		66/90/2500		74/100/2500	
Optimum consumption	gr/kWh		218		203		222	
Max. torque/revs at max. torque/torque rise	Nm/rpm/%		283/1400/25		326/1400/30		377/1400/33	
Cooling	mixed: air-oil		mixed: air-oil		mixed: air-oil		mixed: air-oil	
<b>ELECTRONIC REGULATOR</b>								
SILENCER WITH VERTICAL PIPE MOUNTED Laterally TO CAB CORNER POST	○		○		○		○	
AIR CLEANER WITH DUST EXTRACTOR	○		○		○		○	
Fuel tank capacity	litres (Imp gals)		150 (33)		150 (33)		175 (38.5)	
<b>TRANSMISSION</b>								
N° of gears (4WD: 40 km/h)	FWD+REV		15+15 (**)		15+15 (**)		15+15 (**)	
AGROSHIFT gearbox with electrohydraulic push-button selection (4WD: 40 km/h with creeper)	FWD+REV		45+45 60+60		45+45 60+60		60+60	
N° of gears (30 km/h)	FWD+REV		12+12 (*)		12+12 (*)		12+12 (*)	
N° of gears with creeper (30 km/h)	FWD+REV		16+16 (*)		16+16 (*)		16+16 (*)	
N° of gears with minireduction (30 km/h)	FWD+REV		24+12 (*)		24+12 (*)		24+12 (*)	
N° of gears with creeper (40 km/h)	FWD+REV		20+20 (*)		20+20 (*)		20+20 (*)	
HYDRIVE system: oil immersed multiple disc dual clutch and shuttle - push button operation with electronic control	○		○		○		○	
MULTIFUNCTIONAL ARMREST CONTROL	○		○		○		○	
Rear PTO speed normal and economy (540/1000/540E/1000E rpm)	●		●		●		●	
Synchronised PTO with independent shaft	○ (**)		○ (**)		○ (**)		○ (**)	
INTEGRAL Front PTO with electrohydraulic push-button clutch (1000 rpm)	○		○		○		○	
<b>BRAKES AND STEERING</b>								
Full hydrostatic braking on all 4 wheels	●		●		●		●	
Hydraulic trailer braking valve	○ (**)		○ (**)		○ (**)		○ (**)	
Hydrostatic power steering with load sensing and tilt/height adjustable column	●		●		●		●	
Steering angle	70° 50°		70° 50°		50°		50°	
<b>FRONT AXLE</b>								
Electrohydraulically controlled 4WD and differential locks	●		●		●		●	
SBA SYSTEM: automatic engagement/disengagement of 4WD and differential locks	○		○		○		○	
<b>"LOAD SENSING" HYDRAULIC LIFT SYSTEM</b>								
Rear lift with ELECTRONIC CONTROL and RADAR	○		○		○		○	
<b>ACTIVE HYDRAULIC SUSPENSION</b>								
Max. lifting capacity std/opt	kg lbs		3600/4700 (**) 7937/10382 (**)		3600/4700 (**) 7937/10382 (**)		4700/- 10382/-	
Rated flow of pump std/opt	l/min		41/58 (**)		41/58 (**)		41/56 (**)	
Auxiliary spool valves std/opt	n° ways		6/8		6/8		6/8	
3-point linkage with quick hitch hook ends	○ (**)		○ (**)		○ (**)		○ (**)	
INTEGRAL front lift: max. lifting capacity 2000 kg (4400 lbs)	○		○		○		○	
<b>DRIVING POSITION AND CAB</b>								
Flat platform mounted on silent-block, frame with 2 rear uprights	●		●		●		●	
Original cab with sound insulation, heating and ventilation, escape hatch, seat with safety belt, rear wiper, 4 work light, provision for beacon	○ (**)		○ (**)		○ (**)		○ (**)	
Air conditioning	○		○		○		○	
SEAT WITH AIR SUSPENSION	○		○		○		○	
PERFORMANCE MONITOR (on-board computer)	○		○		○		○	

TECHNICAL SPECIFICATION	SILVER 80		SILVER 90		SILVER 100.4		SILVER 100.6	
	2WD(*)	4WD	2WD(*)	4WD	4WD		4WD	
<b>TYRES</b>								
16.9 R 34 rear	14.9 R 24 front (4WD)		7.50-18/10.00 front (2WD)		●		●	
480/70 R 34 rear	420/70 R 24 front (4WD)		10.00-16 front (2WD)		○		○ (*)	
18.4 R 30 rear	13.6 R 24 front (4WD)		9.00-16 front (2WD)		○		○ (*)	
18.4 R 34 rear	16.9 R 24 front (4WD)		10.00-16 front (2WD)		○		○ (*)	
520/70 R 34 rear	16.9 R 24 front (4WD)				○		○ (*)	
13.8 R 38 rear	12.4 R 28 front (4WD)		7.50-20 front (2WD)		○		○	
14.9 R 38 rear	13.6 R 28 front (4WD)		10.00-16 front (2WD)		○		○	
480/70 R 38 rear	380/70 R 28 front (4WD)				○		○	
14.9 R 38 rear	13.6 R 28 front (4WD)		10.00-18 front (2WD)				○ (*)	
16.9 R 38 rear	380/70 R 28 front (4WD)						○ (*)	
<b>DIMENSIONS AND WEIGHTS (with rear tyres)</b>								
Maximum length without links/with links	mm ins		3785/4105 149.02/161.61		3785/4105 149.02/161.61		3790/4195 149.21/165.16	
Minimum/maximum width	mm ins		1840/2580 72.44/101.57		1840/2580 72.44/101.57		1840/2580 72.44/101.57	
Overall height at hood/frame/cab	mm ins		1745/2695/2675 68.70/106.10/105.31		1745/2695/2675 68.70/106.10/105.31		1745/2730/2710 68.70/107.48/106.69	
Ground clearance	mm ins		515 445 20.28 17.52		515 445 20.28 17.52		445 475 17.52 19.09	
Wheelbase	mm ins		2470 2375 97.24 93.50		2470 2375 97.24 93.50		2375 2635 93.50 103.74	
Min./max. front track	mm ins		1400/2000 1500/2100 55.12/78.74 59.06/82.68		1400/2000 1500/2100 55.12/78.74 59.06/82.68		1500/2100 1600/2100 59.08/82.68 63.99/82.68	
Min./max. rear track	mm ins		1500/2100 59.06/82.68		1500/2100 59.06/82.68		1500/2100 1600/2100 62.99/82.68 62.99/82.68	
Minimum turning radius with/without brakes	mm ins		3300/3600 3000/4650 118.11/141.73 118.11/183.07		3300/3600 3000/4650 118.11/141.73 118.11/183.07		3000/4800 3500/4930 118.11/188.98 137.80/194.09	
Weight including frame/cab	kg lbs		3350/3600 3600/3850 7385/7937 7937/8468		3350/3600 3600/3850 7385/7937 7937/8468		3650/3900 4000/4250 8047/8599 8818/9370	

GROUND SPEED 40 KM/H				
Speeds in km/h (mph) at 2500 rpm engine speed with 16.9 R 34 rear tyres				
AGROSHIFT gearbox (60 FWD + 60 REV)	SPEED (FWD)			
	SLOW	MEAN	FAST	
1 SR	0.28 (0.17)	0.34 (0.21)	0.41 (0.26)	
2 SR	0.42 (0.26)	0.50 (0.31)	0.61 (0.38)	
3 SR	0.55 (0.34)	0.66 (0.41)	0.81 (0.50)	
4 SR	0.73 (0.45)	0.87 (0.54)	1.06 (0.68)	
5 SR	0.97 (0.60)	1.16 (0.72)	1.41 (0.88)	
1 L	0.79 (0.49)	0.94 (0.58)	1.15 (0.72)	
2 L	1.17 (0.73)	1.40 (0.87)	1.70 (1.06)	
3 L	1.55 (0.96)	1.86 (1.16)	2.26 (1.41)	
4 L	2.05 (1.27)	2.45 (1.52)	2.99 (1.86)	
5 L	2.72 (1.69)	3.25 (2.02)	3.96 (2.46)	
1 M	2.51 (1.56)	3.00 (1.88)	3.66 (2.28)	
2 M	3.72 (2.31)	4.45 (2.77)	5.42 (3.37)	
3 M	4.94 (3.07)	5.91 (3.67)	7.21 (4.48)	
4 M	6.52 (4.05)	7.80 (4.85)	9.51 (5.91)	
5 M	8.66 (5.38)	10.36 (6.44)	12.62 (7.84)	
1 H	7.46 (4.64)	8.93 (5.55)	10.89 (6.77)	
2 H	11.06 (6.87)	13.23 (8.22)	16.13 (10.02)	
3 H	14.71 (9.14)	17.60 (10.94)	21.46 (13.34)	
4 H	19.41 (12.06)	23.22 (14.43)	28.30 (17.59)	
5 H	25.76 (16.01)	30.82 (19.15)	37.57 (23.35)	
			40.00 (*) (25.00) (*)	

GROUND SPEED 30 KM/H				
Speeds in km/h (mph) at 2500 rpm engine speed with 16.9 R 34 rear tyres				
AGROSHIFT gearbox (60 FWD + 60 REV)	SPEED (FWD)			
	SLOW	MEAN	FAST	
1 SR	0.21 (0.13)	0.26 (0.16)	0.31 (0.19)	
2 SR	0.32 (0.20)	0.38 (0.24)	0.46 (0.29)	
3 SR	0.42 (0.26)	0.50 (0.31)	0.61 (0.38)	
4 SR	0.55 (0.34)	0.66 (0.41)	0.81 (0.50)	
5 SR	0.74 (0.46)	0.88 (0.55)	1.07 (0.67)	
1 L	0.80 (0.37)	0.72 (0.45)	0.87 (0.54)	
2 L	0.89 (0.55)	1.06 (0.66)	1.30 (0.81)	
3 L	1.18 (0.73)	1.41 (0.88)	1.72 (1.07)	
4 L	1.56 (0.97)	1.86 (1.16)	2.27 (1.41)	
5 L	2.07 (1.29)	2.47 (1.54)	3.02 (1.88)	
1 M	1.91 (1.19)	2.28 (1.42)	2.78 (1.73)	
2 M	2.83 (1.76)	3.38 (2.10)	4.12 (2.56)	
3 M	3.76 (2.34)	4.50 (2.80)	5.49 (3.41)	
4 M	4.96 (3.08)	5.94 (3.69)	7.24 (4.50)	
5 M	6.59 (4.10)	7.88 (4.90)	9.81 (5.97)	
1 H	5.68 (3.53)	6.80 (4.23)	8.28 (5.15)	
2 H	8.42 (5.23)	10.07 (6.26)	12.27 (7.82)	
3 H	11.20 (6.96)	13.40 (8.33)	16.33 (10.15)	
4 H	14.77 (9.16)	17.67 (10.98)	21.54 (13.38)	
5 H	19.60 (12.18)	23.45 (14.57)	28.59 (17.77)	
			40.00 (*) (25.00) (*)	

(\*) Not available in UK (\*\*) Standard in UK (\*) Max effective speed  
SR = Creeper L = Low M = Middle V = High

● = Standard ○ = Optional

Technical data and illustrations are approximations only. SAME, in its effort to give the product that you require, reserves the right to update this information at any time without notice.

SPECIALISED LUBRICATION



Sede e Direzione: V.le F. Cassani, 15 - 24047 Treviglio (BG) - Italia - Tel. +39/363/4211