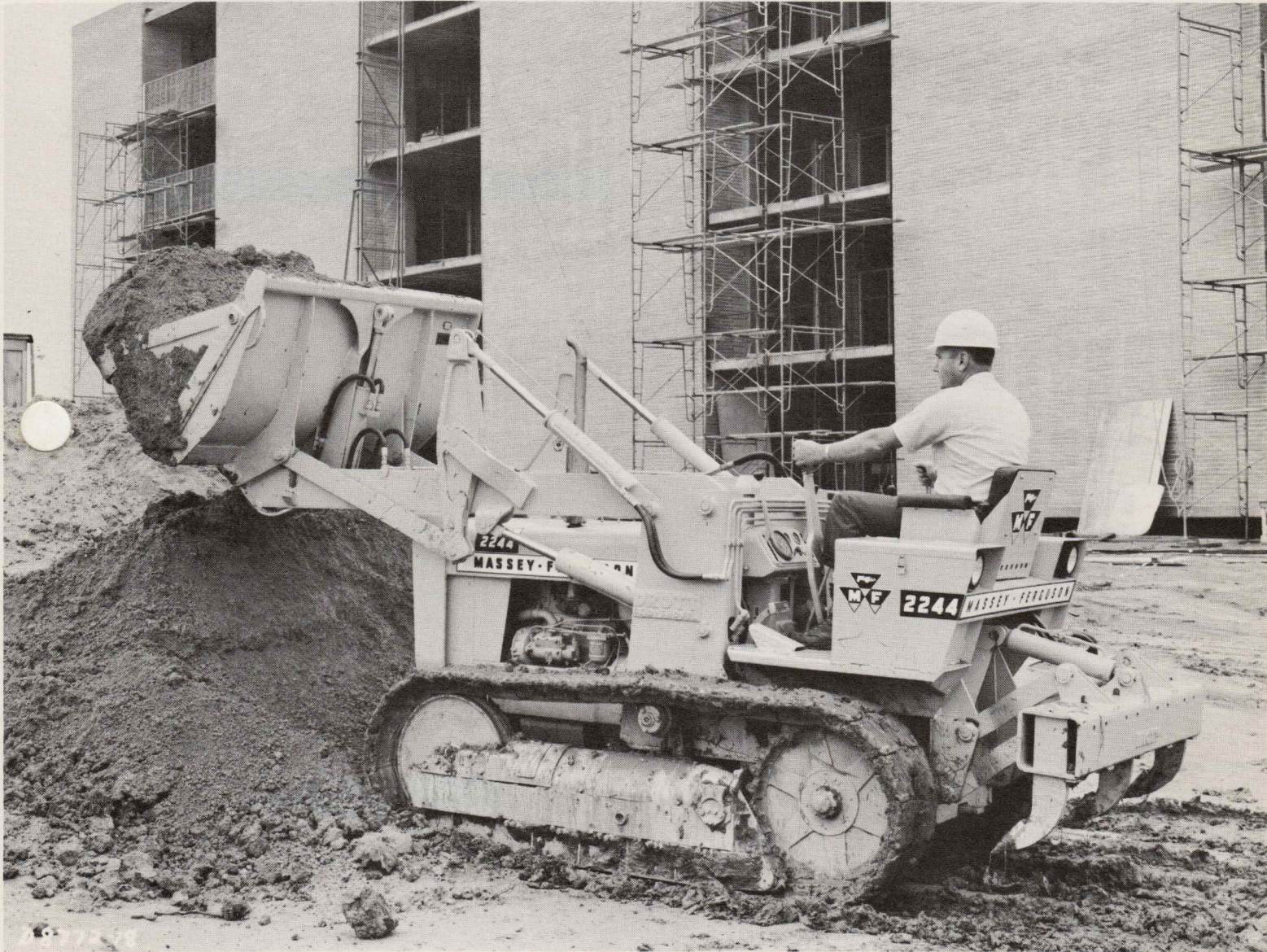




**MF INDUSTRIAL
& CONSTRUCTION
MACHINERY**

MF 2244 CRAWLER LOADER



Big tractor performance in a compact, usable size

- **44 HP Diesel** - has ample reserve engine torque for lugging power required in a Crawler
- **Long five roller track frame** with large diameter front idler offers excellent balance and flotation
- **Fast - easy - hydraulic track tension adjustment** lets you adjust track tension in seconds
- **Well engineered operator's compartment** provides excellent visibility and convenient hydraulic controls for fast, exact control of loader and ripper.
- **Choice of buckets** - Standard or 4 in 1
- **Available with 12 ft. backhoe**

MF 2244 CRAWLER LOADER ENGINEERING SPECIFICATIONS

LOADER

Bucket: Standard 62" width ¾ cu. yd. S.A.E. capacity w/six optional bucket teeth or 4 in 1 62" width ¾ cu. yd. S.A.E. capacity w/six bucket teeth standard.

Lift: 4,000 lbs. to full height.

Lift Cycle Time: 6½ secs. to maximum of 9 ft. 10½ ins.

Hydraulic Controls: One four way lever (unit equipped with standard bucket). One four way, one two way lever (unit equipped with 4 in 1 bucket). All levers located at fingertips of operator's right hand. Both bucket controls incorporate full float and power beyond.

Hydraulic System: Gear type pump 17 GPM @ 2000 RPM w/2150 PSI. Replaceable 10 micron filter.

Loader Arms: Parallel linkage provides mechanical self leveling of bucket for reduced spillage at full height and greater bucket dump angle. Loader skid shoes act as fulcrum when bucket is used removing weight from tractor and increasing tractor life as well as giving additional pry out force. Bucket and clam indicators are located on left bucket activating cylinder.

RIPPER

Controls: Hydraulic double acting cylinder controlled by lever conveniently located with loader controls at operator's right hand.

Penetration: Parallel linkage allows constant penetration at any depth from 0 to 8".

Number of Teeth: Three

Lift Clearance: 12"

Width: 58"

Weight (Approx): 1260 lbs.

DRIVE TRAIN

Transmission: Four speed Manual Shuttle (travel speeds forward 0 - 6.12 MPH, *reverse 0 - 7.10 MPH).

*Reverse speeds 16% faster than forward.

Steering: Multiple disk clutch and hand brake.

Master Clutch: single dry disk, 11" diameter.

ENGINE

Diesel: Low rpm, high torque 3 cylinder 152.7 cubic inch, 44 hp (with all standard accessories) @ 2250 rpm. Develops 119 ft. lbs. torque @ 1300 rpm.

Under Carriage: 48" gauge track with five rollers and one carrier. Available with 12" semi grouser track shoes. Rigid suspension, hydraulic track tension adjustment.

Total Weight: Crawler Loader & Ripper approx. 9845 lbs.

Backhoe (Model 212)

*Digging Depth (2 ft. flat bottom): 12 ft.

*Swing Arc: 180°

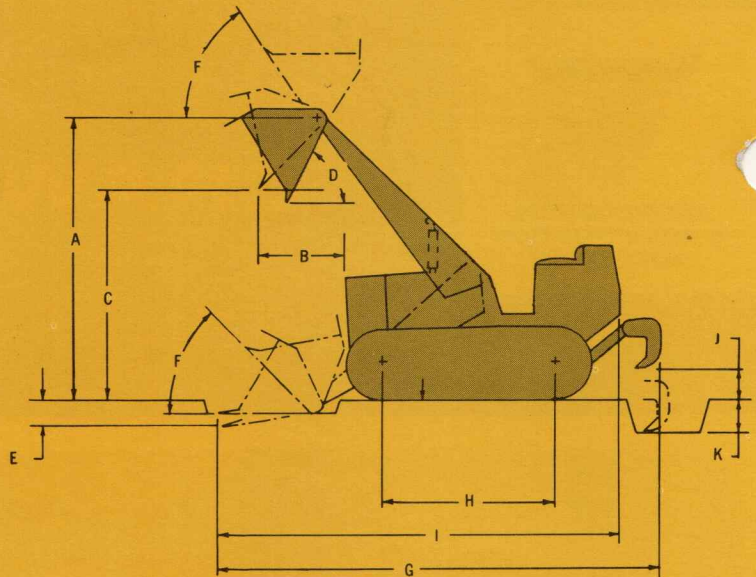
*Digging Force: 8500 lbs.

*Load Height: 9 ft.

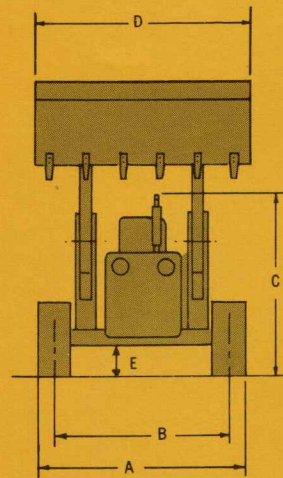
Seat: Single turn around

Buckets: General purpose 12"-16"-24" Combination 36"

*I.E.M.C.



| A | B | C | D | E | F | G | H | I | J | K | L |
|--------|-----|----|-----|------|-----|------|------|------|----|----|-----|
| 9'10½" | 31" | 8' | 50° | 137" | 45° | 168" | 62¼" | 152" | 3" | 8" | 12" |



| A | B | C | D | E |
|------|------|-----|------|------|
| 60½" | 48½" | 81" | 60¼" | 10½" |

Massey-Ferguson reserves the right to make changes in design or to add improvements to its products without incurring any obligation on goods purchased prior to such changes or improvements.



**MF INDUSTRIAL
& CONSTRUCTION
MACHINERY**

Massey-Ferguson Inc.
Akron, Ohio