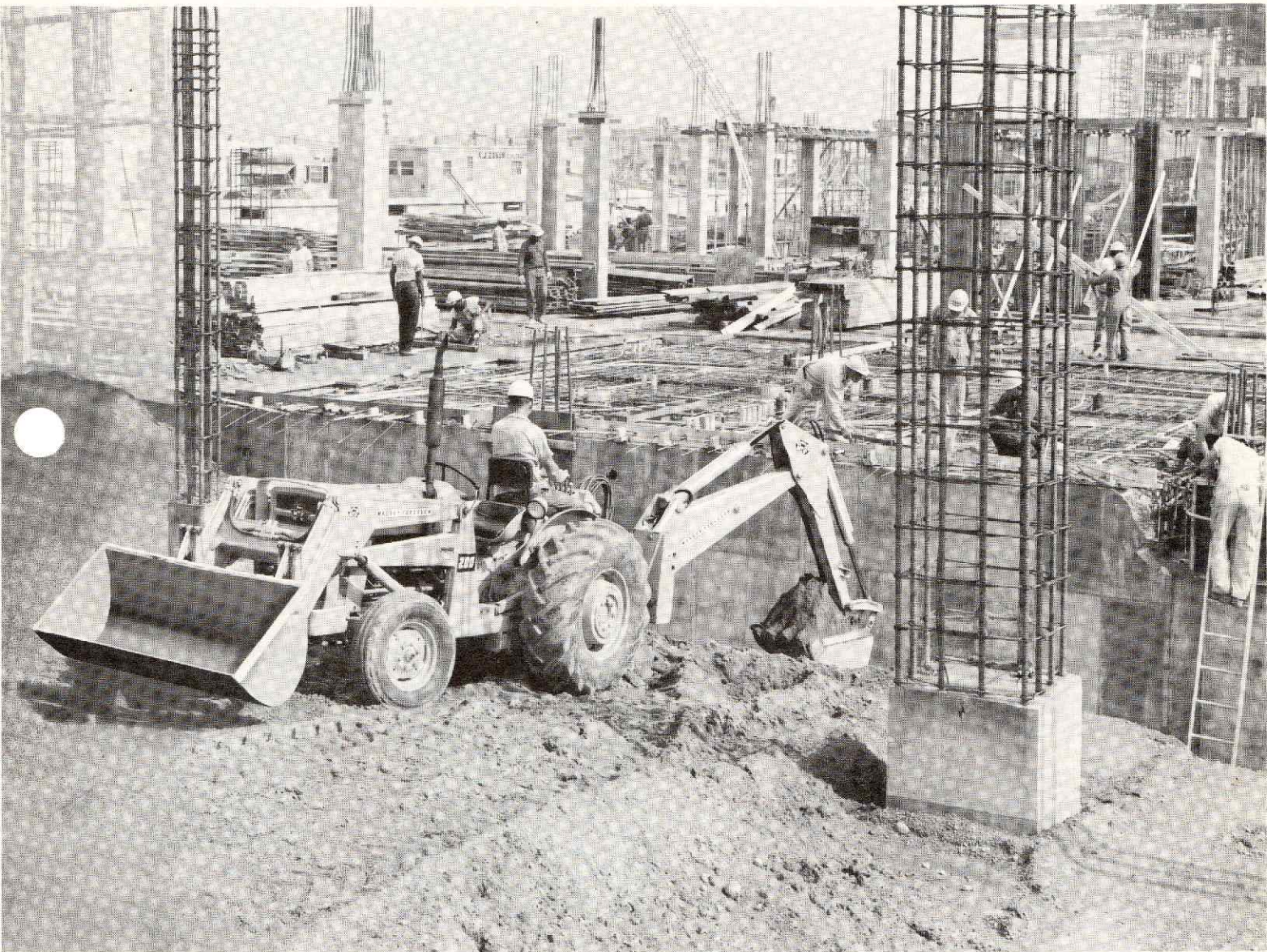




**MF INDUSTRIAL
& CONSTRUCTION
MACHINERY**

MF 3165 BACKHOE LOADER



Versatile job site performer.

Wide variety of features allows wide variety of job applications.

- Gas or diesel power
- Standard or manual shuttle transmission
- Unmatched operator comfort
- 3-point hitch with exclusive Ferguson hydraulics
- 2 Model Backhoes. (Stationary or Pow'r Slide)
- Fast cycling time
- Welded box type construction
- 2 hydraulic pumps (17 or 24 GPM)
- Balanced Design

MF 3165 BACKHOE LOADER ENGINEERING SPECIFICATIONS

BACKHOES

Models: Choice of two heavy duty models. MF 222 fixed position for all around digging or MF 232 Pow'r Slide for offset digging.

Boom & Dipper: Welded box type utilizing high strength, light weight alloy steel. Standard boom, standard dipper (13 ft. digging depth capacity) equipped with 4" diameter double acting, duplex chrome shaft cylinders. Long boom standard dipper (14 ft. digging depth capacity) and long dipper (15 ft. digging depth capacity) equipped with 4 1/4 in. diameter double acting, duplex chrome shaft boom and 4 in. diameter double acting, duplex chrome shaft dipper cylinders.

Rotary Swing Cylinder: Constant torque, constant velocity *180° cushioned swing.

Hydraulic Controls: Segment type 4-lever control valve with individual reliefs for selective and precise backhoe operation.

Stabilizers: MF 222: wide stance * 10 ft. spread high strength box section stabilizers. 15° leveling ability with positive positioning lockout. Retractable in transport position to * 7 ft. 10 ins.

MF 232: individually adjustable high strength box section provides stability for digging close to obstructions with components fully side shifted. Maximum operating spread * 8 ft. 9 ins. Minimum operating and transport spread * 6 ft. 6 ins. Positive positioning lockout.

Bucket Linkage: Two position, 4 bar linkage and bucket attaching points provides maximum digging performance. Up to * 8830 lbs. of digging force more than adequate for toughest soil conditions.

Operator's Compartment: Choice of single turn about seat or dual tractor backhoe seats.

LOADER

Bucket: Standard 66" tread width 5/8 cu. yd. Optional 54" width 1/2 cu. yd. and 74" width 3/8 cu. yd.

Lift: 3300 lbs. to full height.

* Based on I.E.M.C. Specification Definition.

Total Cycle Time: full lift, full dump, lower and level 10 1/2 secs.

Hydraulic Controls: two lever, full feathering, selective hydraulic self leveling, full float action.

Hydraulic System: Gear type pump 17 GPM @ 2000 RPM, and 2150 PSI. Replaceable cartridge 30 micron full flow filter. (24 GPM gear type pump optional equipment).

Loader Arms: Pressed steel box section with two duplex chrome shaft lift and two double acting duplex chrome shaft, bucket actuating cylinders. All cylinders 2 1/2" diameter.

ENGINE

Gas: Low rpm, high torque 4 cylinder, 176 cubic inch, 57.2 engine hp (with standard accessories) @ 2000 rpm.

Diesel: Low rpm, high torque 4 cylinder, 203.5 cubic inch, 60.56 engine hp (with standard accessories) @ 2000 rpm.

DRIVE TRAIN

Transmission: Heavy duty, dual range w/six speed forward and reverse, single level fingertip control Manual Shuttle (travel speeds 0 - 20 MPH) or/heavy duty, dual range manual shift w/six forward (travel speeds 0 - 13.4 MPH) and two reverse (travel speeds 0 - 6.64 MPH).

Clutch: Single, heavy duty industrial type, manually applied 11" diameter or dual heavy duty industrial type, manually applied, w/one 11" diameter and one 9" diameter (for use with PTO and 3-point hitch attachments).

Brakes: Individual foot operated, self energizing, 7" inner axle double disc type, featuring high braking torque with low pedal effort. Foot operated parking brake.

Steering Axle: Fixed tread, heavy duty welded box construction.

Steering: Power

Power Take Off: live available on dual clutch models only.

Ferguson System: 3-point hitch, category 1 ball points. Constant running 4.35 GPM pump @ 2000 engine RPM.

Differential Lock: Selective, foot operated.

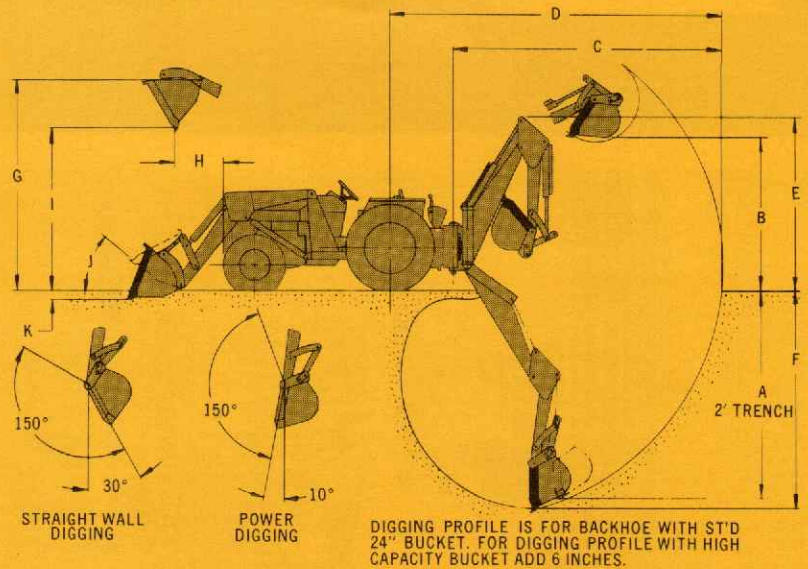
Throttle: Ratchet type hand w/overriding foot control.

Lights: Two fender mounted forward floods. One selective clear/red flood and one flasher warning fender mounted rear.

Tires: Drive: 16.9x24-6 ply rating R4. Steer: 7.50x16-6 ply rating L4

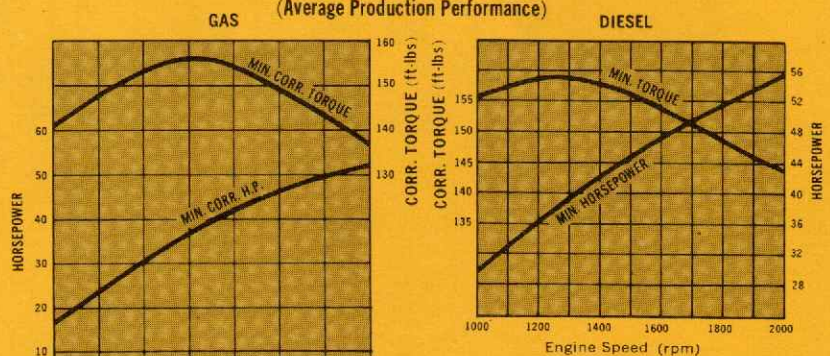
Shipping Weights (Approximately):

W/222 Backhoe Gas 8628 lbs. Diesel 8983 lbs.
W/232 Backhoe Gas 9008 lbs. Diesel 9363 lbs.



w/Std. Boom & Dipper	A	B	C	D	E	F	G	H	I	J	K
MF 222	*12'7"	9'	15'6"	19'	10'1"	*12'9"	12'2"	16"	8'4"	38"	4"
MF 232	12'7"	9'	15'6"	19'2"	10'1"	12'9"	12'2"	16"	8'4"	38"	4"
**Standard Bucket											
w/ Long Boom/Std. Dipper											
MF 222	13'4"	9'10"	16'5"	20'1"	10'10"	13'6"	12'2"	19 1/4"	9'7"	38"	4"
MF 232	13'4"	9'10"	16'5"	20'3"	10'10"	13'6"	12'2"	19 1/4"	9'7"	38"	4"
w/ Long Boom/ Long Dipper											
MF 222	14'	9'7"	16'9"	20'5"	11'	14'2"	12'2"	19 1/4"	9'7"	38"	4"
MF 232	14'	9'7"	16'9"	20'7"	11'	14'2"	12'2"	19 1/4"	9'7"	38"	4"

ENGINE PERFORMANCE (Average Production Performance)



Estimated maximum performance with air cleaner, air induction pipe, fan belt and generator (not charging).

Estimated maximum performance with air cleaner, air induction pipe, fan belt, muffler and generator (not charging).

Massey-Ferguson reserves the right to make changes in design or to add improvements to its products without incurring any obligation on goods purchased prior to such changes or improvements.



**MF INDUSTRIAL
& CONSTRUCTION
MACHINERY**

Massey-Ferguson Inc.
Akron, Ohio