



WILLMAR®

EAGLE® 8100

EAGLE®
S E R I E S



AGRI★MART

Equipment & Parts Sales

Agri★Mart (270) 926-8737
P.O. Box 22879 (866) 807-2787-Toll Free
Owensboro, KY 42304-2879 (270) 688-5937-Fax

www.agrimart.net

STRENGTH, COMFORT AND PRECISION CONTROL

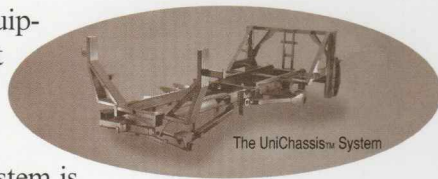


A strong suspension delivers a smooth ride

In order to build strong equipment you've got to start with a solid frame.

UniChassis® Frame.

The UniChassis™ frame system is engineered for strength and durability. This precision welded, high-grade, steel tubular frame is so reliable, it's guaranteed with an unprecedented five year warranty.



AireGlide® Suspension.

It's strength continues with the patented AireGlide® suspension system. The split axle, four-wheel independent suspension system works hand in hand with the UniChassis™ frame to absorb rough field conditions, delivering a smoother ride.

Adjustable Wheel Track.

The adjustable wheel track width ranges from 120-152 in (305-386 cm) and ensures you can match almost any row spacing or wheel track requirements.

Benefit To Customer.

With the two systems working together, the operator can increase field speeds, while providing a strong stable boom platform for an even application. It's the smoothest, most comfortable ride in the industry, producing less wear and tear on components and less fatigue to the operator, results... increased productivity.



AireGlide® Suspension.

The patented AireGlide® suspension system features split axles, 4-wheel independent suspension with heavy duty long-travel shock absorbers and auto-adjust air springs for a smooth, stable ride.



Air Springs.

The air springs have exterior mounted air valves and auto-adjust via an on-board air compressor as the tank load changes. They provide a smooth ride for operator convenience and increased productivity.



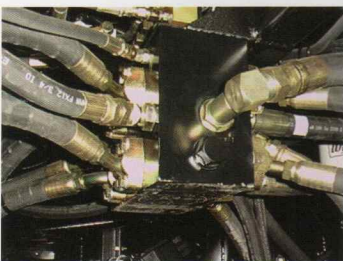
Air-suspension Seat.

The air seat is adjusted with a press of a switch on the right armrest, and levers just below the cushion. The seat provides the operator with maximum comfort, in addition the ergonomic controls are mounted to the right and move directly with the seat.

PROVEN POWER AND PERFORMANCE



Unmatched power to ground for constant traction



Flow Limiter Block.

If a front wheel spins out, the flow limiter will restrict oil to that motor, supplying continuous pressure to the remaining three wheels. Constant traction means less crop damage and a steady, even spray application.



Reliable Drive System.

The internal pressure over ride (IPOR) transmission delivers constant hydraulic oil flow to the two speed wheel motors providing continuous power to the ground.

Operator controlled gear switching maximizes power to the ground, providing constant traction, resulting in less crop damage and increased productivity.



The large cooling capacity is rated approximately 2.5 times the minimum required, allowing the system to run cool during those hot summer days, increasing drive system life and dependability.

The Eagle® 8100 drive system is designed to provide maximum power to the ground and constant tractive effort.

Cummins® Engine.

The powerplant is a 200 hp Cummins® turbo charged, six-cylinder diesel engine. An industry workhorse, the Cummins® engine ensures day-in, day-out reliability and ease of service. Combined with the machine's accessibility and serviceability, it's the ultimate field sprayer that delivers more field time.



Hydraulic System.

Its constant flow hydraulic transmission with **I.P.O.R.** (Internal Pressure Over Ride), delivers power to the ground via the two speed wheel motors. The operator controls the shift-on-the-go four speed drive system, with a flip of a switch. Under severe load, such as hills or soft ground, the drive system delivers maximum pressure for constant traction and consistent spray pattern.

Benefit to the Customer.

This drive system continues to provide power and traction long after the competition has stalled out. It allows you to start earlier and continue longer under more extreme conditions, covering more acres with less down time, increasing your efficiency.

ACCURATE, STABLE BOOM SYSTEM

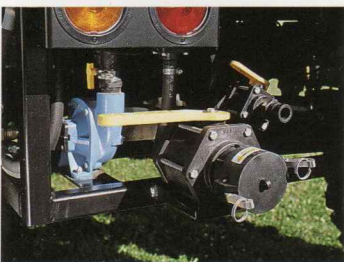


Precise control of application



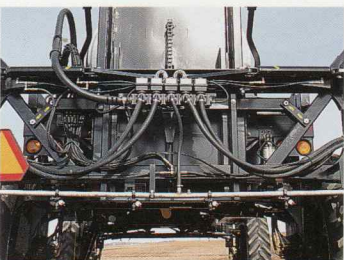
Suspension.

The AireGlide® suspension system offers 7 inches of travel which not only ensures you a smooth ride, but it also provides a stable boom platform, resulting in an accurate, even spray application.



Pump & Plumbing.

The 2 x 1 1/2 inch hydraulic driven centrifugal pump, delivers consistent, reliable performance. An optional dedicated sparge pump for agitation, allows the main pump to deliver maximum volume to the booms. The 3-inch port reduces fill time.



Self Leveling Boom.

Rubber bushings absorb the fore and aft boom stress during acceleration and deceleration. While the self-leveling spring/hydraulic cylinder ensures a constant spray pattern and longer boom life for a maximum return on your investment.

The Eagle® 8100 field sprayer is designed to deliver a stable, precise spray pattern.

Controller.

The in dash Mid-Tech® ARC-6000 control console is easy to read and includes built in function switches and a rotary dial. Simply set the console to SCAN and speed, acres, rate and volume are displayed alternating every few seconds. The control console is positioned directly in front of the operator for added convenience.



Smooth Ride.

The UniChassis™ and AireGlide® suspension work hand in hand to smooth out the rough field conditions. Keeping the boom level ensures your customer of an accurate application from the nozzle tip to the crop canopy.

Open View Cab.

The open cab view provides the operator with a clear line of sight and an unobstructed view of the 80 or optional 90 ft. booms.

Benefit To Customer.

An Eagle® 8100 sprayer provides the operator with the controls, the ride and the view to maximize productivity, ensuring an accurate, consistent spray pattern.

OPERATOR COMFORT AND CONVENIENCE

Unmatched comfort, effortless operation



Inching Pedal.
Press down pedal to slow for end rows, release pedal and machine will resume to previous operating speed. Since it's foot controlled, the operator can keep both hands on the wheel resulting in less crop damage and a consistent spray pattern.



Dash Instrument Console.
The pedestal style console allows for an open view to the front wheels. Included in the dash are the ignition switch, lights, ether primer button, park brake and gauges for, oil temp, water temp, oil pressure, battery, fuel, and hour meter.



AC/heater control.
The comfortable operator's environment is controlled by the overhead AC/heater control console. Adjustment knobs move smoothly, even when wearing gloves.

The Eagle® 8100 cab is designed to provide the operator with unmatched comfort and ease of operation.

Air Seat/Ergonomic Controls.

The fully adjustable air suspension seat and ergonomic controls provide ultimate comfort during those long days in the field. Settle in and adjust the seat with an armrest switch. Then, simply reach down to fine tune the seat to fit your comfort level. The ergonomically designed hydrostatic control lever with built in boom, rack and foamer functions, puts control at your fingertips. And, since the control lever is mounted to the right side of the seat, it moves with you.

Tilt Wheel/Open View.

The tilt/telescopic steering wheel and open view provide value-added comfort and ease of operation. Adjust the tilt/telescopic steering wheel with a lever on the left side of the column. The open cab view provides a clear line of site to the field ahead.

Benefits To Customer.

The air seat, ergonomic controls, tilt wheel and open cab view keep you relaxed while going from sun up til sun down.

Maintenance is quick and easy on your Eagle® 8100



Oil Level.
To check oil level, simply remove the dipstick on the left side of the engine. It's also easy access to the oil fill from the same operator position.



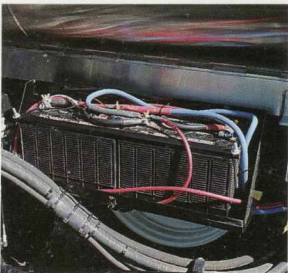
Hydraulic Filters.
The hydraulic filters are positioned vertically for servicing. Changing the filters is done quickly and cleanly.



Air Cleaner.
The engine air cleaner is located under the hood in a cleaner environment. Just remove wingnut and element to clean or replace.



Fuel Tank.
The single 100 gallon fuel tank fills fast and is conveniently located for ground level filling.



Batteries.
The batteries are easily accessed from ground level. Simply remove the battery box cover to check the cables and fluid level.



Grease Points.
The grease points are clearly marked for easy access with a yellow arrow, making regular servicing quick and routine.

When it's time for routine maintenance on your new Eagle® 8100, you can expect to do it quickly and easily.

Hood. One person can raise the lightweight fiberglass hood, exposing plenty of elbow room to perform maintenance around the engine compartment.

Service Points. All service points are designed for quick, simple maintenance. Fluid levels, grease fittings, air filter, engine and hydraulic filters can be easily accessed and maintained within minutes.

In fact, ease of maintenance on an Eagle® 8100 is an added benefit, getting you back to the field quickly, increasing your productivity.

EAGLE 8100 SPECIFICATIONS

Standard and Optional Equipment

STANDARD EQUIPMENT

ENGINE

Cummins six-cylinder, turbo-charged with air compressor, 200 Horsepower at 2500 rpm, 105 amp alternator, high-capacity dry air cleaner with safety element, ether aid.

Fuel tank: 100 gal (378.5 liters) capacity
Exhaust: Chrome stack located at right rear of cab increases visibility. Ejector system connected to air cleaner.

Air cleaner: Mounted under the hood, includes air scoop with screen on top of hood, ejector style cleaner, safety element, easy to service after raising hood.

Hood: Fiberglass construction, balanced for easy opening, two mounted headlights, two mounted amber lights, louvered for engine cooling.

CAB AND INSTRUMENTATION

Cab: Sound dampening floor mat, Air seat with controls mounted to the right armrest, raised center panel with gauges for monitoring engine and hydraulics, electrical switch boxes mounted under covers, storage under the seat, sliding door, new dash for greater visibility, hydraulic low level warning, steering orbitrol is isolated by mounting on underside of cab floor. Steering column with horn, hi/lo beam, flashers, turn signals, and tilt/telescope.

Instrumentation: Voltmeter, engine oil pressure, engine water temperature, hydraulic oil temperature. Digital tachometer, Mph, and gear range. Hour meter, fuel gauge, boom product pressure gauge, sparge product pressure gauge, Air conditioning, two cup holders,

hydraulic oil tank low level warning light, FM stereo radio with weatherband, right hand armrest controls and console.

Lights: 10 total lights, hi/lo beam, two for boom illumination, 6 for field, turn signals with 4 way flashers.

Control systems: Mid-Tech® ARC-6000 Controller, 12-way rotary display selector, monitors ground speed and boom width. Dickey-John radar, rapid check flowmeter, auto-range valve.

Electrical system: Main power usage controlled by solenoids outside the cab, bulkhead connections to cab to aid in sealing cab.

CHASSIS

Hydrostatic drive system: Hydrostatic drive train with full-time four wheel drive, four-speed drive system. Split axle, four wheel independent suspension, with Firestone air springs, adjustable track width 120-152 in (305-386 cm), hydraulic pressure sensing steering with Char-Lynn Orbitrol, 7.6 Hydro pump, foot pedal inching valve for end row turning, 10 micron filtration, two speed axial piston wheel motors, flushing end cap on right front motor. Drive circuit hoses are ORS flat faced fittings or split flange.

Hydraulic tank: 50 gal (189.25 liters) capacity
Power hubs: Planetary gear with bearing nut retention, park brakes on all four hubs.

Frame: Single piece tubular weldment, stronger design pivoting swing arms, rectangular tube construction, bolt on rear boom rack. Easy access to product pumps and filters, modular mounted to skid.

Suspension: Patented Eagle® AireGlide® suspension, automatically adjusts for machine weight loaded or empty, four air springs, engine mounted 13.2 CFM air compressor.

Wheel spacings: New style to allow operators to make settings with spacing pins, fine tuning of wheel spacings accomplished with uniball threaded adjustment, each wheel is controlled separately, separate hydraulic bank of solenoids that control wheel spacings.

Wheels: Single welded rim design with formed center, 14.9R x 46 radial tires.

Batteries: Two 12 volt batteries, 700 cca each, heavy duty.

PRODUCT SYSTEM

Pump system: Hydraulic driven Hypro centrifugal pump 2 x 1 1/2, electric sparge control with pressure gauge, agitation nozzles, 1 1/2 product line to boom, Rapid check flow meter by Mid-Tech®, boom line strainer, rear mounted three inch fill, rear mounted 1 inch fill for rinse tank, single switch rinse capability, skid mounted plumbing system, 3 inch suction line from tank, automatic air bleed line, 3 inch safety ball valve from tank sump, boom line pressure gauge at cab rear.

Product tank: 825 gal (3123 liters) poly tank, two rinse nozzles, venturi style agitator sparge, spring mounted to frame, large sump.

Rinse tank: 55 gal (208 liters) poly tank with stand, fill/drain valve, electric ball valves to control.

Boom system: S.S. boom feed pipes, 3-way nozzle spray body, electric over hydraulic boom functions, individual boom tip height control.

Auxiliary hydraulics: 6 bank valve for booms, 4 bank valve to control wheel track width, tandem pump to run auxiliary and product pump, steering has priority over other auxiliary functions, shift/brake valve, product pump valves.

OPTIONAL EQUIPMENT

CHEMICAL INDUCTOR

Initiates chemicals into the tank.

BOOM - 80 or 90 ft (24.4 or 27.4 meters)

Stainless steel boom tubes, Nozzles with 20 in (51 cm) spacing.

INDEPENDENT SPARGING PUMP

Independently operated and isolated sparge pump driven by its own hydraulics allows sparging while operating injection systems. Allows main product pump to operate at full capacity when spraying. Sparge pressure gauge at cab front.

TIRES

320/90R x 54 Radial tires

TANK

825 gal (3123 liters) Stainless steel

FOAM MARKER

30 gal (114 liters) foam marker with optional ground level fill.

FENDERS

Set of four plastic fenders w/hardware

EAGLE® 8100 Sprayer Specifications

ENGINE

Engine model.....6BTA5.9-C200
Displacement.....5.88 Litre (359.0 in.³)
Bore.....102 mm (4.02 in.)
Stroke.....120 mm (4.72 in.)
Aspiration.....Turbocharged & Aftercooled
No. of cylinders.....6
Horsepower.....149 kw (200 BHP) @ 2500 RPM
Fuel system.....Bosch P3000 8% Governor Reg.
Fuel capacity.....100 gallon (454.6 liters)

HYDRAULICS

Hydraulic tank.....50 gallon (189.25 liters)
Drive system.....four-speed
Drive train.....hydrostatic full-time four wheel drive
Hydro Pump.....7.6 C.I.R.
Drive motors.....Two speed axial piston
Power hubs.....Planetary Gear
Park brakes.....All four wheels
Wheel track.....Four bank valve
Booms.....Six bank valve
Steering.....Priority
Filters.....10 Micron filtration

DIMENSIONS

Overall length (80ft.bm).....22ft 6in (6858 mm)
Overall length (90ft.bm).....24ft 9in (7544 mm)
Overall height w/14.9RX46 tires.....12ft 1in (3683 mm)
Overall height w/12.4RX54 tires.....12ft 3in (3734 mm)
Overall width wheels in.....11ft 4in (3454 mm)
Overall width wheels extended.....14 ft (4267 mm)
Wheel base.....167 in (4242 mm)
Clearance w/14.9RX46 tires.....49 in (1245 mm)
Clearance w/12.4RX54 tires.....51 in (1295 mm)
Adjustable track width.....120-152 in (3048-3861 mm)
Ground speed w/320/90RX54 tires.....up to 25 mph.
Empty weight.....20,000 lbs (9072 kg)

PRODUCT SYSTEM

Product tank w/large sump.....825 gal (3123 liters)
Product tank fill-rear.....3 in (76 mm)
Product pump.....Hypro 2 x 1 1/2 in. hyd.
Venturi style agitation nozzles.....2
Rinse nozzles.....2
Rinse tank w/electric valves.....55 gal (208 liters)
Rinse tank fill.....Ground level
Boom feed pipes.....Stainless steel
Boom functions.....Electric over hydraulic
Nozzle body spray system.....3-way
Nozzle spacings.....20 in (508 mm)

World-class Product Support

When you purchase a new Eagle® 8100, you not only get a superior designed, world-class sprayer, but you also get our World-class Product Support.

These value-added items will ensure that your ownership of a new Eagle® 8100 is an enjoyably long, profitable one.

- Easy Operation and Maintenance
- Maximum Return on Your Investment
- Nationwide Dealer Service and Support
- AGCO Worldwide Quality Parts & Service Support
- Flexible Financing Options from Agri Credit

Together, World-class Product Support means we stand behind you and are committed to your productivity and success.



WILLMAR®



For more information on the Willmar product lines, contact AGCO Corporation
3030 Lexington Ave. So., Suite 700, Eagan, MN 55121 USA Phone (651) 406-5100 Fax (651) 406-5142

Equipment and specifications are subject to change without notice. Some items called out or shown may be optional. © 1999 AGCO Corporation Printed in the USA

Mid-Tech® is a registered trademark of Midwest Technologies, Inc. UniChassis™ is a trademark and Eagle®, Willmar®, AireGlide® and AGCO® are registered trademarks of AGCO Corporation, Duluth, GA
MA/169605/399/W-109 Cummins® is a registered trademark of Cummins Engine Company, Inc.