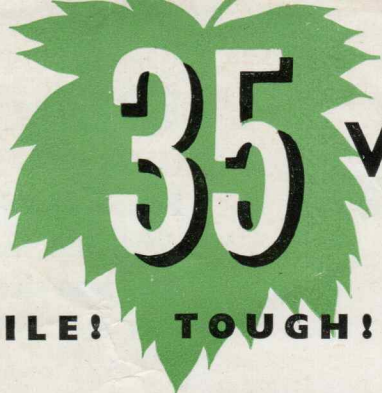
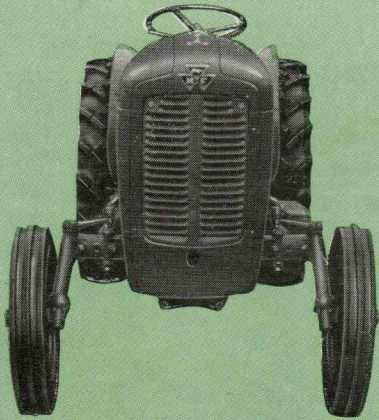


MASSEY-FERGUSON



VINEYARD TRACTOR

COMPACT! VERSATILE! TOUGH! ACCURATE!

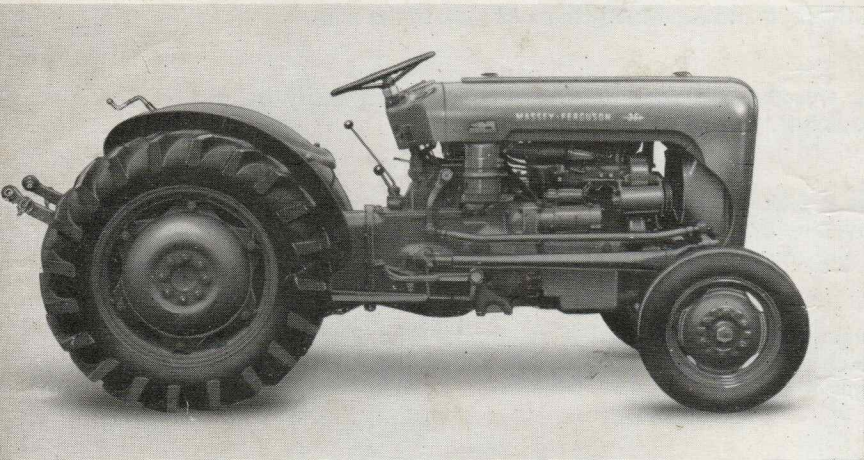


COMPACT!

Only 46" wide, the Massey-Ferguson 35 Vineyard Tractor slips easily between rows of tall plants. It's perfect for sugarcane, pineapples, vines and bush fruit.

VERSATILE!

The 35 Vineyard Tractor features the famous Ferguson System. It will do all normal farm jobs—even ploughing—with economy and efficiency. Yet it tackles specialised work with equal ease.

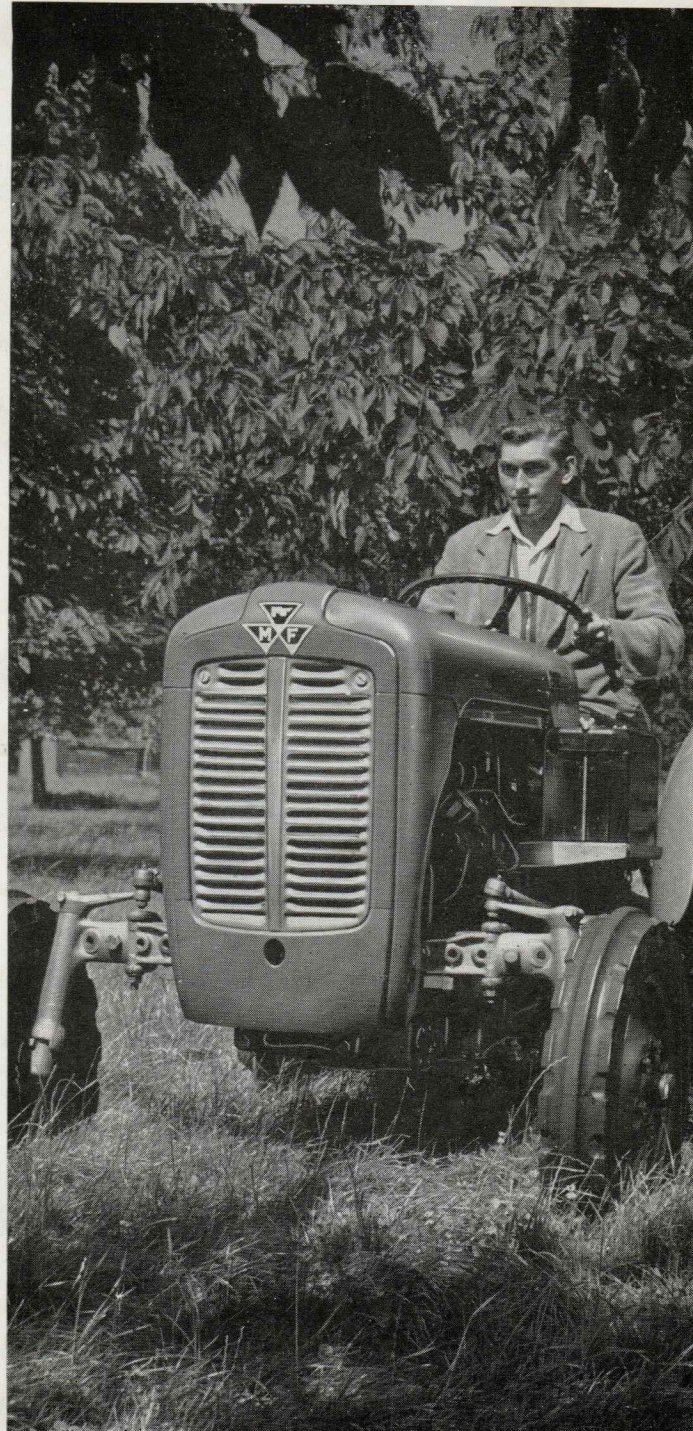


TOUGH!

The 35 Vineyard Tractor is a strenuous worker. It will plough through hard tropical clays—and its powerful engine, plus the Ferguson System, makes it the match of many big tractors.

ACCURATE!

With this neat, agile tractor you can work right up to delicate plants and do a first-class row-crop job. Light, positive controls and good visibility allow fast, accurate work.



MASSEY-FERGUSON IS INVESTING IN THE FARMERS' FUTURE

MASSEY-FERGUSON



VINEYARD TRACTOR



Only 46" wide!

For vineyards, market gardens, orchards and plantations, this tractor is the perfect machine. Small size and man-sized performance have made it popular all over the world!

The Massey-Ferguson 35 Vineyard Tractor has been designed for use in any country. A choice of four engines matches your local fuel supplies exactly. You can have petrol (high or low compression), kerosene, or the famous 3-A-152 3-cylinder diesel, with tremendous lugging power at low speeds.

- ★ Coupled with the powerful engine, the Ferguson System gives the tractor unparalleled output for a machine of its size. Hydraulic control of implement working depth, position control, and response control make all cultivations quick and easy. Exclusive two-way hydraulics enable the tractor to work equally well with both long and short implements.
- ★ The small wheels give a low centre of gravity, for extra safety. The tractor can work easily under orchard trees. Working speeds are low too—down to only $\frac{1}{4}$ m.p.h. Yet you can drive at $12\frac{1}{2}$ m.p.h. on the road and run briskly from one job to the next.
- ★ The wheelbase is only $76\frac{1}{2}$ ", so you can turn easily on restricted headlands.
- ★ The P.T.O. shaft (standard equipment on all tractors) can either be driven by the engine or at a speed proportional to the forward speed of the tractor.
- ★ Dual clutch can be fitted if required. The first pressure on the clutch pedal halts the tractor, but allows the P.T.O. and hydraulic pump to operate.
- ★ Wheel-tracks are adjustable from only 32" to 56" (front) in 4" increments.

So you can use this tractor for a whole host of jobs. It will do all your cultivations, and then give you accurate, time-saving row-crop work with little alteration.

ASK YOUR DEALER FOR A DEMONSTRATION TO-DAY!



Massey-Ferguson reserves the right to make changes in design and improvements to machines, without obligation on machines purchased before or after changes are made.