

**MASSEY FERGUSON**

74-100HP

# MF47/5700

Massey Ferguson Global Series



# Contents

3	Global Series	8	Shuttle Options
4	New workhorses of the world	9	Linkages and Axles
5	Easy on the operator	10	Product Features
6	Engines	11	Specifications
7	Transmission		



**Page 3**  
Global Series



**Page 4**  
New workhorses of the world



**Page 5**  
Easy on the operator



**Page 6**  
Engines



**Page 7**  
Transmission



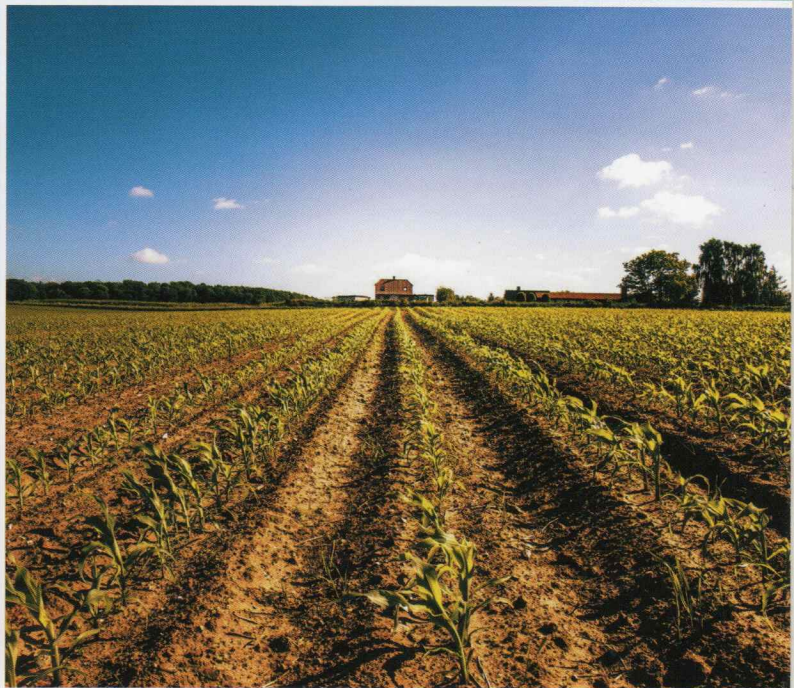
**Page 8**  
Shuttle Options



**Page 9**  
Linkages and Axles



**Page 10**  
Product Features



## Global Series

Since the inception of the brand, Massey Ferguson has produced more than four million tractors in the 74-100 hp bracket. It's a power sector that once represented the largest tractors available, yet now accounts for a size of machine found in almost every farming operation around the world. Suitable for a multitude of tasks throughout Australia and New Zealand, and tailored to meet your specific requirements, these are the tractors the world's farmers depend on day in, day out – the new Massey Ferguson Global Series.

### A New Tractor For A New World

Massey Ferguson's resilient utility tractors have been built to service Australia and New Zealand's farming communities. Designed from the ground up, these world-class Global Series tractors can handle our rich agricultural landscape with

proficiency and ease. Manufactured to exact standards, Massey Ferguson Global Series tractors are built in the latest high-technology facilities to ensure farmers experience an unbeatable performance, every day.

# The new workhorses of the world

With the new Global Series, Massey Ferguson has taken the concept of a utility tractor and re-engineered it from the ground up to meet the needs of present and future farming. On offer in this power bracket is an array of build specifications, options and accessories, all designed to help tailor your machine exactly the way you need it for your farming operation.

## **In-built reliability, integral dependability**

Massey Ferguson engineers have farming in their blood. They know exactly how crucial it is that a tractor meets the challenges that nature can put in the way of any farming activity. So whether it's making the most of short weather windows to complete jobs in the field, or battling through the elements to ensure livestock are

looked after, these are machines that can be relied on all year round, in all weathers, in all environments. With the Global Series each component and every assembly has been designed to ensure rock-solid reliability and dependable operation.



# Easy on the operator

To ensure customers have the most suitable option for their operation, there are two specification variants, Standard and Essential, available on all Global Series tractors.

## A specification for every need

These two variants offer a simple, cost effective base option for customers wanting the minimum options for low-hour operation and a more advanced option for customers wanting improved comfort, functionality and ease of operation for longer operating hours.

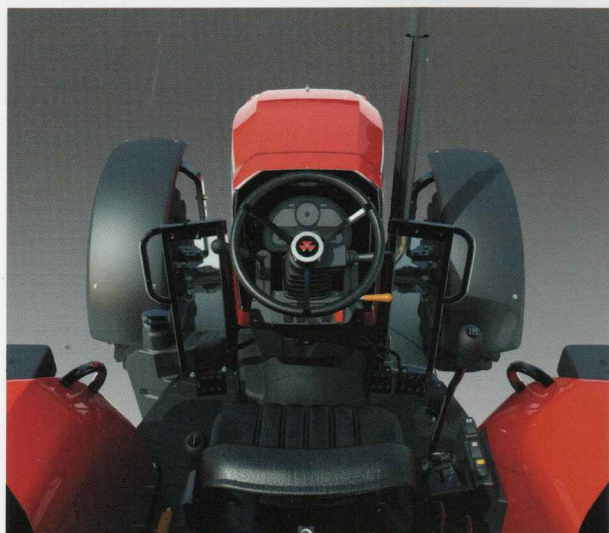


### Standard Variant\*

- ▶ Footstep operators station with side mounted gear selectors
- ▶ Platform mounted pedals
- ▶ Mechanical Clutch
- ▶ Mechanical Synchronised forward/reverse shuttle located to the left of the operator
- ▶ Mechanical brakes



\* MF4700 Series only



### Essential Variant

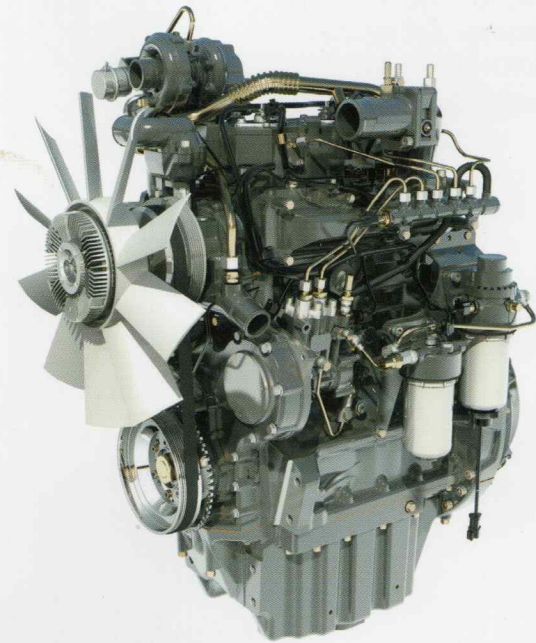
- ▶ Semi-platform operator's station with side mounted gear selectors
- ▶ Pendant pedals
- ▶ Power Control Lever with comfort control and wet clutch
- ▶ Hydraulic brakes
- ▶ Flat platform





## Engines

Global Series tractors are powered by AGCO POWER engines specifically designed for Massey Ferguson, so you can be sure that product quality, compatibility and efficiency are of a very high standard.



### **MF4708 / MF5709 / MF5710**

#### **The muscle to tackle any task**

For proven reliability, ruggedness and fuel economy, a 4.4-litre AGCO POWER four-cylinder engine is core to the MF4708 and MF5700 Series models providing up to 410 Nm of torque at 1,500 rpm.

### **Meagre on fuel, low on noise**

The engines used in the Global Series tractors are all of a long stroke design that provides high levels of torque across a broad speed range. Maximum torque is achieved at a low engine speed of 1,500 rpm on both models. With a low rated engine speed of only 2,200 rpm, not only is diesel use minimised, but so too are both noise and wear and tear, resulting in lower fuel bills and a more pleasant operator experience.

### **MF4707**

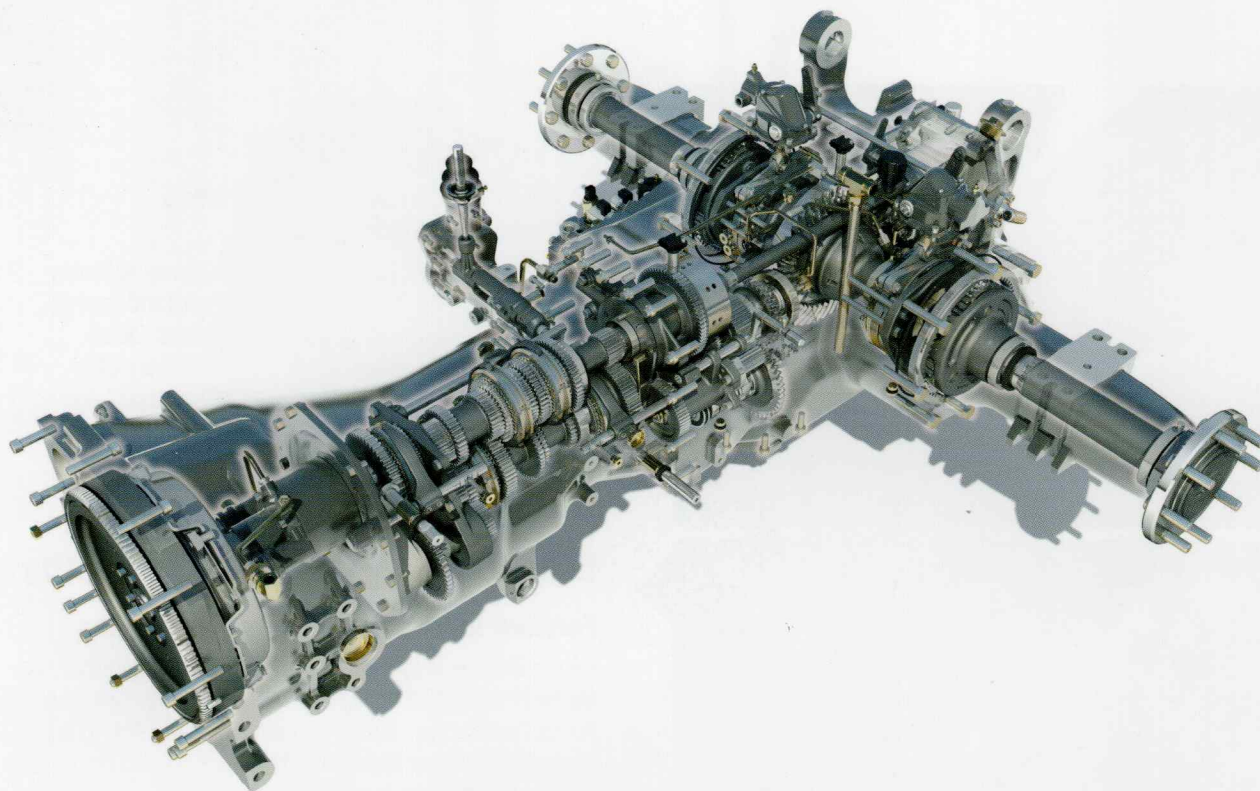
#### **Proven power, perfect package**

Renowned for compact, frugal power and proven reliability, a 3.3-litre AGCO POWER three-cylinder engine is at the core of the 74 hp Massey Ferguson 4707 model, providing 296 Nm of torque at 1,500 rpm.



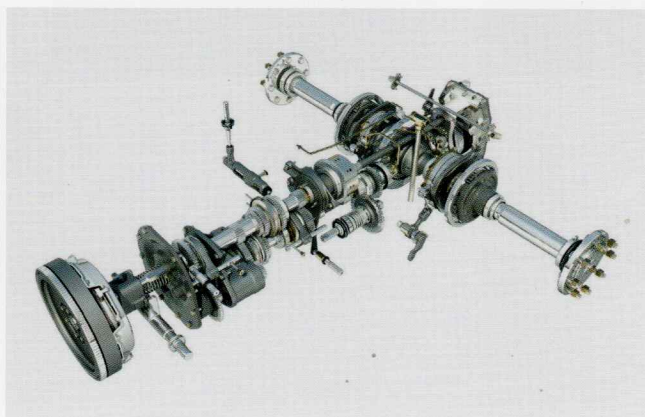
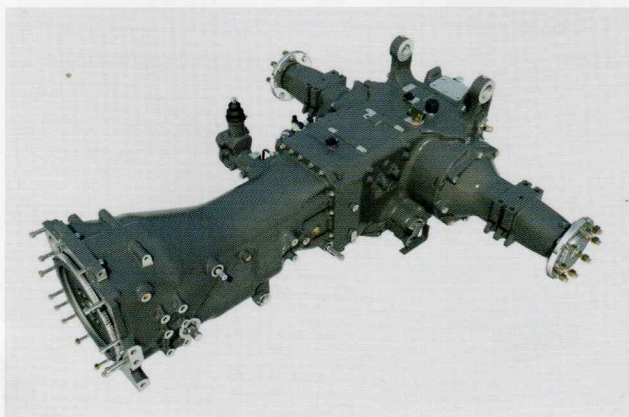
# Transmission

The Massey Ferguson Global Series tractors feature all new synchromesh transmissions. With six automotive-style synchronised gears and a synchronised low to high range change, the total of twelve forward and twelve reverse speeds provide unmatched flexibility and easy use.



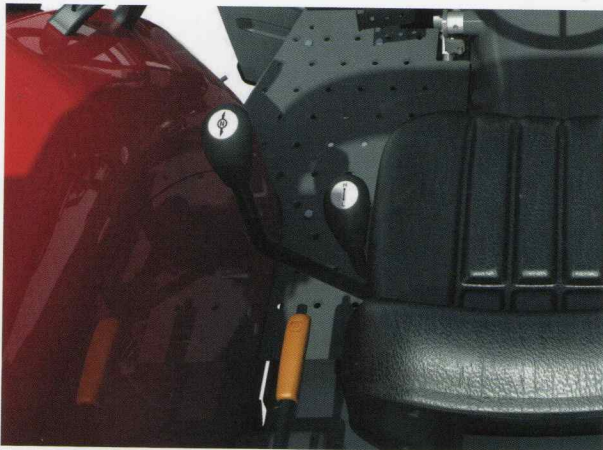
## Easy gear selection for the right gear for every job

With six synchromesh gears in each range, the right speed for each job is easily selected using gear levers mounted beside the operator. These are within easy reach, yet positioned to ensure an unimpeded passage when mounting and dismounting.



# Shuttle Options

Moving between forward and reverse for loader work, field headlands or even hooking up implements, is made easier with a variety of forward/reverse shuttle options.



## Standard Variants\*

### Synchronised mechanical forward and reverse shuttle

Fitted to all Standard Variants is a simple, yet exceptionally easy to use synchronised mechanical forward and reverse shuttle located to the left of the operator's seat. Clutch operation is a simple and effective mechanical dry-plate type giving great functionality in a cost effective package.

\*MF4700 Series only.



## Essential Variants – power shuttle

### Forward to reverse as quickly as you like

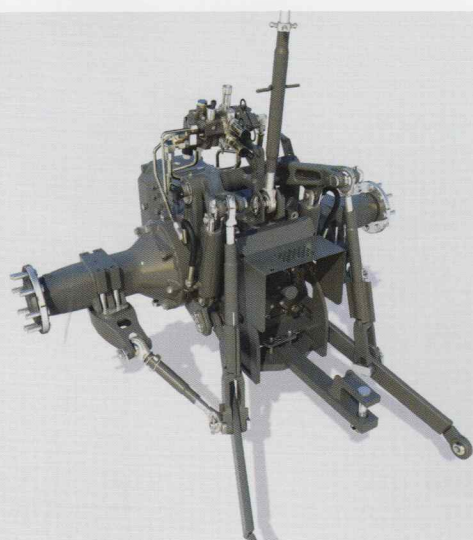
For the ultimate in forward and reverse shuttle operation, the Essential Variant is available with the Massey Ferguson Power Control Lever. Similar in design and operation to the Power Control Lever featured on Massey Ferguson products such as the MF7700 and MF8700, the new Power Control Lever is located to the left of the steering column and features Comfort Control to alter the aggressiveness of the direction change.

Functions include:

- Clutchless forward and reverse shifting
- Speed of direction change can be altered through the Comfort Control dial
- Declutch by lifting the handle to enable gear changes without the clutch pedal

Coupled with a multi-plate wet clutch and the 12x12 synchromesh transmission, this gives the operators a highly flexible and easy to use system designed for operations such as loader work where frequent changes of direction are required.

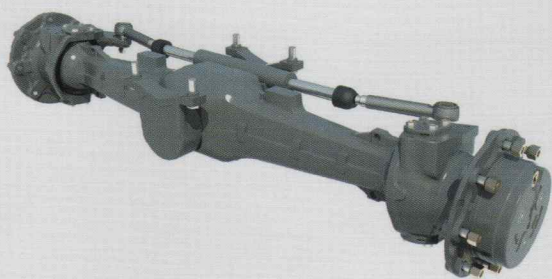
# Linkages and Axles



## Power any implement

There is no limit to the range of powered equipment that can be put to work behind the Global Series tractors. All are fitted with a 35 mm/six-spline PTO shaft providing a 540 rpm PTO speed and protected by an independent PTO clutch (IPTO). 540/540E is base on all Global Series Essential Variants.

A simple open-centre hydraulic system, powered by a gear-driven pump has a dedicated auxiliary capacity of up to 98 l/min, allowing the electronically-controlled rear linkages to lift up to 3,300 kg. In addition, this oil flow is also available via the auxiliary spool valves to operate implement hydraulic functions.



## In total control

Base on all models, the 4WD front axles feature a 55° maximum steering angle, making the machines very manoeuvrable and easy to use in confined spaces. Standard Variants feature a limited slip differential, while Essential have an electro-hydraulic differential lock.

# Product Features

1. 4-cylinder or 3-cylinder AGCO POWER Engine
2. 12 x 12 synchromesh transmission with synchronised shuttle
3. Pivoting front bonnet
4. Footstep or Semi Platform or Operator Station
5. 4WD front axles
6. Electro-hydraulically engaged rear differential lock and 4WD
7. Electronic Linkage Control (ELC)
8. 540 or 540/540E rpm Independent PTO
9. Two Auxiliary spool valves
10. Folding ROPS and optional sun canopy
11. Gear Driven Open Centre Hydraulic System



## Supported worldwide by AGCO and Massey Ferguson

Massey Ferguson dealers can be found in significant numbers in almost every country across the globe. They are run by trained staff who know Massey Ferguson machines inside out, and are able to provide advice, parts, service and support whenever required to keep your Global Series tractor running at its optimum. And they are backed by the resources of AGCO, parent company of Massey Ferguson and a world leader in farm equipment. So wherever you farm in the world, you can be sure that your Massey Ferguson Global Series tractor will be supported by the best team in the business of farm equipment.



# Specifications

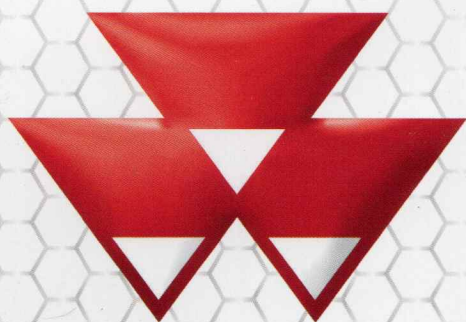
	MF4707ST	MF4708ST	MF4707ES	MF4708ES	MF5709ES	MF5710ES
VARIANTS	STANDARD			ESSENTIAL		
<b>Engine Performance</b>						
Engine hp (kW) power ISO hp(kW)	74 (55)	82 (61)	74 (55)	82 (61)	92 (68)	102 (76)
Max torque at 1,500 rpm (Nm)	296	342	296	342	380	410
Rated engine speed (rpm)	2,200					
<b>Engine</b>						
Engine Type	AGCO POWER AP33	AGCO POWER AP44	AGCO POWER AP33	AGCO POWER AP44		
No. of Cylinders	3	4	3	4		
Capacity (cc)	3,300	4,400	3,300	4,400		
Aspiration	Turbo Charged					
<b>Transmission</b>						
12 x 12 Synchro	Standard					
Shuttle operation	Left hand side shift			Left hand console mounted		
Clutch type	Single Dry Plate Clutch			Multi-Plate Wet Clutch		
Clutch operation	Mechanical			Hydraulic		
<b>Power Take-off</b>						
Independent PTO	540			540 / 540 E		
<b>Steering</b>						
Hydrostatic	Base					
<b>Hydraulics</b>						
3-point linkage control	Lever operated ELC					
Max lift capacity (kg)	3,000			3,300		
Auxillary (litres/min)	65			98		
System pressure l bar	200					
<b>Spool Valves</b>						
Auxillary	2 Valves					
<b>Brakes</b>						
Type	Oil immersed multi disc wet brakes					
<b>Weights and Capacities</b>						
Weight without ballast - Footstep (kg) 4WD	3,300			3700		
Fuel tank (litres)	82	105			170	
<b>Wheel Equipment</b>						
Trelleborg Radial Tyres	460/85 R30 340/85 R24			480/70 R38 440/70 R28		



	MF4707	MF4708	MF5709	MF5710
<b>Dimensions</b>				
A - Wheelbase - mm	2,250	2,358	2,500	
B - Overall length from front weight frame to rear linkage arms - mm	4,066	4,175	4,755	
C - Height to top of canopy - mm	2,572	2,572	2,775	
D - Track width - mm	1,297 to 1,848			

For even greater productivity a range of optional equipment is available including front weights, rear-wheel weights, ROPS Canopy. For full details please consult your local Massey Ferguson dealer.

Every effort has been made to ensure that the information contained in this publication is as accurate and current as possible. However, inaccuracies, errors or omissions may occur and details of the specifications may be changed at any time without notice. Therefore, all specifications should be confirmed with your Massey Ferguson Dealer or Distributor prior to any purchase.



# MASSEY FERGUSON

**A world of experience. Working with you.**



[facebook.com/MasseyFergusonGlobal](https://facebook.com/MasseyFergusonGlobal)  
[twitter.com/AGCOcorp](https://twitter.com/AGCOcorp)  
[youtube.com/MasseyFergusonVideo](https://youtube.com/MasseyFergusonVideo)  
[blog: agcocorp.com](http://blog.agcocorp.com)

Every effort has been made to ensure that the information contained in this publication is as accurate and current as possible. However, inaccuracies, errors or omissions may occur and details of the specifications may be changed at any time without notice. Therefore, all specifications should be confirmed with your Massey Ferguson Dealer or Distributor prior to any purchase.

 **MASSEY FERGUSON** is a worldwide brand of AGCO.