

Round Balers

GP 510

GP 800



**DEUTZ
FAHR**

The mark of quality farming.

A breakthrough round

The present demand is for reduction of harvesting risks.

With the current scarcity of farm labour, it is more than ever necessary to clear fields quickly and get hay and straw stored.

A faster, cleaner and more sensible method than round baling is hardly possible.

Deciding on the right size of baler

DEUTZ-FAHR offer 2 types of round baler. The GP 510 is recommended where cramped stalls demand the smaller bales (1.50 m dia. x 1.20 m width), or where bales have to be transported by trailer or lorry over longer distances (2 bales alongside each other come within the generally permitted maximum load width of 2.50 m).

The DEUTZ-FAHR GP 800 is the machine for large areas and heavy wide swaths, or where storage space is limited and bales have to be left out for long periods.



with a new idea - baling.

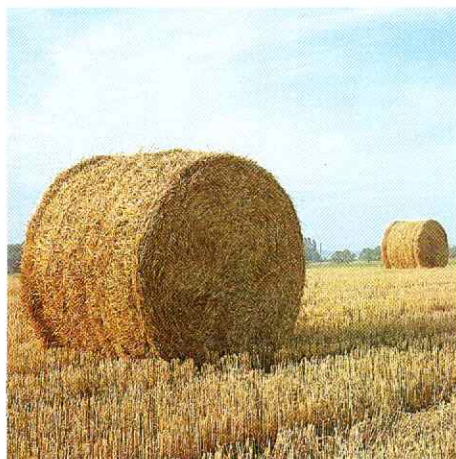
First-rate Design and Quality

It has always been DEUTZ-FAHR policy to offer the best design.

The GP 510 and GP 800 balers offer a practical means of rapid harvesting and storage and ease of subsequent use.



One-man Operation but DEUTZ-FAHR makes



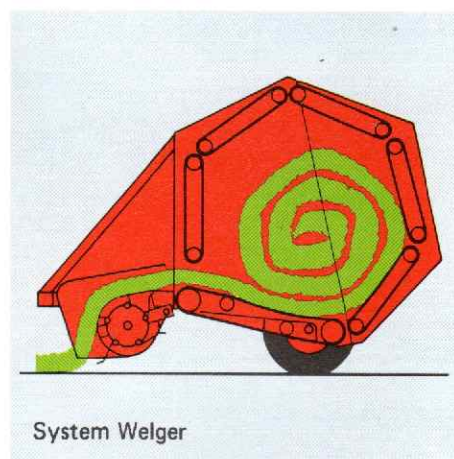
Typical of DEUTZ-FAHR: Large areas covered.

2 hectares per hour can be managed comfortably, meaning 16–20 bales of hay or straw (with the GP 800, hay bales of 500–800 kg, straw bales of 300–500 kg).
... which means you can make use even of short spells of fine weather.



Typical of DEUTZ-FAHR: Clean and gentle pick-up.

The large wide heavy-duty pick-up with its very closely-spaced tines fully gathers even the shortest crops.
... which means better efficiency and improved quality.



System Welger

Typical of DEUTZ-FAHR: Bales are loose inside and hard outside.

And this is a deciding factor. The hard shell makes this bale highly weather-resistant.

... which means you can happily store it in the open for long periods.

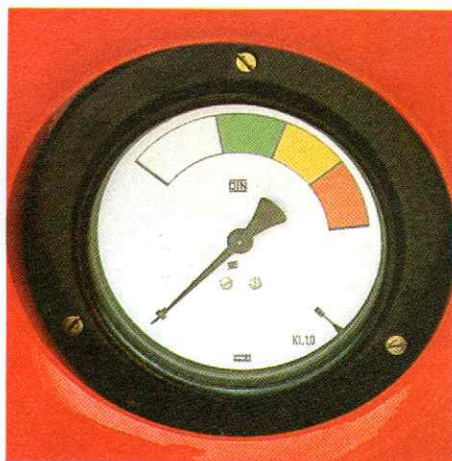
**ion is economical,
like it a lot more so.**



Typical of DEUTZ-FAHR: Bales are easily transported.

Bales from a DEUTZ-FAHR round baler are externally rigid, since the "hard shell" makes them strong and durable.

... which means fast working without losses.



Typical of DEUTZ-FAHR: Adjustment of bale density and weight.

There is no adjustment of bale size, but weight and density are variable. The driver can see the density from the pressure gauge and regulate the contents of the baling chamber accordingly.

... which means a sensible control system to suit individual requirements.

The Superiority of the System - the Hard Outer Shell.

Round balers operate to a variety of systems, however the deciding factor is not how, but the result. What are the bale characteristics?

Typical of DEUTZ-FAHR: Bales dry easily.

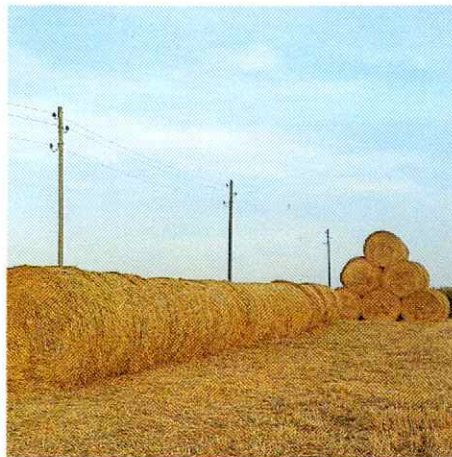
For the soft core allows ideal after-drying by wind from the side.
... which means bales start drying from the inside.



Typical of DEUTZ-FAHR: Bales can be stored in the open almost indefinitely.

Since bale structure and shape allow any conventional type of open-air store, where they can be left until required for use.

... which means your storage problems are over.



Typical of DEUTZ-FAHR: Bales suitable for any type of use.

Whether hay bales are used for self-feeding of cattle or the fodder is dispensed by fork, or straw bales are to be opened up, the work is simply and quickly done.

... which means easy feeding with a high-value crop.



We have control over everything but the weather* ...

**** ...and that we are helping you to surmount.***

DEUTZ-FAHR prove this by the fact that:

- Daily DEUTZ Tractors are proving themselves worldwide under the most arduous conditions.
- Design, construction and processing are being continually improved, an example being electrophoresis dip-varnishing, here in use on combine harvesters.
- Everywhere DEUTZ-FAHR agents with their qualified advice and service organisations offer a real partnership to local farmers.



DEUTZ-FAHR offer you more reliability, faster working and better harvesting results by:

- Perfection both in the whole and in detail
- DEUTZ diesel engines matched to DEUTZ transmission and hydraulic systems and DEUTZ-FAHR harvesting methods. All from the one company!

**DEUTZ
FAHR**

The mark of quality farming.

Trouble-free Binding:



The twine guide tube is simply controlled from the tractor, the twine being wound in a spiral round the bale.

Automatic Binding:



This is operated by pulling a rope, the tying operation being controlled by a ratchet gear. A stepped pulley with four different grooves allows to preselect the interval between twine turns.

Technical data

	GP 510	GP 800
Intake	Pick-up with guide stirrup, hydraulic lift controlled from driver's seat, feeler wheel	
Intake width	1500 mm	1800 mm
P.T.O. speed	540 rpm	540 rpm
Drive	Wide-angle propeller shaft working to one side, with slipping clutch	Wide-angle propeller shaft working to one side, with slipping clutch
Rolling chamber	Comprises 6 segments with endless belts and hydraulically-operated tail flap	
Bale size		
Diameter	1500 mm	1800 mm
Width	1200 mm	1500 mm
Hitch	Towbar or longitudinal towbar	Towbar or longitudinal towbar

	GP 510	GP 800
Tyres	10.0/75-15 Impl.	10.0/75-15 Impl.
Electrical equipment	Tail, stop and flashing indicator lights, with wiring to tractor	
Min. tractor power	37 kW (50 hp)	40 kW (55 hp)
Length	4.05 m	4.95 m
Width	2.10 m	2.45 m
Height	2.13 m	2.43 m

Optional Accessories

Tyres	11.5/80-15 Impl. 6 ply	11.5/80-15 Impl. 6 ply
Pick-up cover plate		
Automatic tying mechanism		

Illustrations, measurements and weights are not binding.

Special Note

This leaflet was published overseas and the equipment, special optional equipment and technical data referred to are applicable only to the equipment as sold overseas. The particular equipment shown in this leaflet should be used as a guide and before making a decision to purchase, please consult your local DEUTZ-FAHR dealer for particulars on how this equipment is offered for sale in Australia and New Zealand. DEUTZ-FAHR.

Klöckner-Humboldt-Deutz AG
Zweigniederlassung Fahr

