

QUALITY

ENGINEERED TO PERFORM BETTER  
FOR LONGER

# Giltrap

## FORAGE WAGONS



YOUR FARM DESERVES THE STRONG, DURABLE RELIABILITY OF  
NEW ZEALAND'S MOST POPULAR & LARGEST SELLING FORAGE WAGONS

# Giltrap

## A FAMILY COMPANY

### COMPANY HISTORY

Giltrap Engineering Limited was founded in 1959 within a small farming district near Otorohanga. By 1965, from a small beginning, Giltraps had expanded to selling Farm Trailers throughout New Zealand.

In 1969 the first Forage Wagon was developed.

From this first basic Forage Wagon there has been a continuous development to the wagons of today. Giltraps pioneered many Forage Wagon improvements, one of which is the patented Super Hydraulic Drive System.



Feeding out with a Giltrap Forage Wagon

Since 1978 Giltraps have exported throughout the Pacific Basin. Their largest export market being Australia.

Giltraps have for many years been the largest Australasian manufacturers of Forage Wagons.



Wilfred, Shirley and Andrew Giltrap

## Guaranteed Quality... from start to finish



Steel storage



Sandblasting



Rollforming sides



Fabrication



Painting



Quality Control



Spare parts back-up



The Giltrap Super System was recognised by the prestigious Fieldays Awards for Design Performance Application.

# Giltrap

## CENTRE FEED FORAGE WAGONS

### ■ M40 ECONOMY (5.75cu.m)

Designed and built as a basic Forage Wagon using many common components, but does not have some of the more refined features of the 90 Series (e.g.. Fast Floor Reverse).

PTO or Standard Hydraulic Drives available.



### ■ M90-70 (7cu.m)

These popular New Generation Wagons fulfil the needs of most average sized farms.

Using available accessories they can be utilised for harvesting fodder in addition to feeding out.

Super Hydraulic or Standard PTO Drives available.



### ■ M90-90 (9cu.m)

For slightly larger farms. A very popular size with all features as standard.



### ■ M90-105 (10.5cu.m)

For the larger farm. Standard or oscillating tandem axles and rear floor drive available as optional equipment if the wagon is to be used for harvesting. Optional high back gate. Bath tub style body.

Super Hydraulic or Standard PTO Drives available.



# Giltrap

## CENTRE FEED FORAGE WAGONS

### ■ M90-130 (13cu.m)

This model has been developed to serve the needs of the largest farmers. Built to a robust design, these models are able to feed out large quantities of fodder. The bath tub style body gives a greater capacity in a shorter length.

Tandem axles are standard equipment.



### ■ Tyre options

FAST REVERSE STANDARD ON ALL 90 SERIES MODELS – REAR DRIVE KIT FOR HARVESTING AVAILABLE ON MODELS 105/130/100X/125X  
ADJUSTABLE AXLE ON ALL MODELS EXCEPT 40 ECONOMY

- Other tyre sizes available on request
- Tandem axle available for all models
- All cubic capacities are taken at side height - the elevator extends above side height



Tyre sizes left to right: 10/75 x 15.3, 11.5/80 x 15.3, 400 x 15.5, 1400 x 20, 1300 x 530

## CENTRE FEED SPECIFICATIONS

MODEL	OVERALL MEASUREMENTS			BIN MEASUREMENTS			Cu.m.	Tyres	Axle Type	No Floor Chains	Del	Approx Tare Weight
	L	H	W	L	H	W						
<sup>40</sup> ECONOMY	5.23	2.15	2.47	2.85	1.20	1.74	5.95	10.0/75 X15.3	Single	2	Centre	1150kg
90-70	5.90	2.23	2.53	3.40	1.20	1.74	7.09	11.5/80 X15.3	Single	2	Centre	1280kg
90-90	6.90	2.23	2.53	4.40	1.20	1.74	9.18	11.5/80 X15.3	Single	2	Centre	1490kg
90-105	6.90	2.41	2.53	4.40	1.20	2.05	10.82	11.5/80 X15.3	Tandem	2	Centre	1920kg
90-130	7.90	2.40	2.75	5.40	1.20	2.05	13.28	400 X15.5	Tandem	3	Centre	2430kg

## CROSS FEED SPECIFICATIONS

90-66X	5.90	2.34	2.53	3.40	1.20	1.74	7.09	11.5/80 X15.3	Single	2	RH side	1690kg
90-80X	5.90	2.46	2.53	3.40	1.20	2.05	8.36	11.5/80 X15.3	Single	2	RH side	1860kg
90-100X	6.90	2.46	2.55	4.40	1.20	2.05	10.82	11.5/80 X15.3	Tandem	2	RH side	2350kg
90-125X	7.90	2.46	2.75	5.40	1.20	2.05	13.28	400 X15.5	Tandem	3	RH side	2860kg

# Giltrap

## CROSS CONVEYOR FORAGE WAGONS

### ■ M90-66X (6.5cu.m)

This model has been developed for smaller farms. It has a cross conveyor and a straight sided body



### ■ M90-80X (8cu.m)

The 90 series cross conveyors are unique specialized Forage Wagons and have a low loading height utilising a bath tub design to give greater volume over a shorter body length.

These wagons are built to feed out a more precise narrow row on the ground or place material into troughs or bins.

Tandem axles standard equipment on M90-100X and M90-125X. Super Hydraulic or Standard PTO Drive available.



### ■ M90-100X (10.5cu.m)



Side delivery  
in action.



### ■ M90-125X (13cu.m)



# Giltrap

## ACCESSORIES

### ■ Tandem Oscillating Axle

(Standard equipment on some models)  
Heavy duty tandem axles give greatly reduced ground pressure. A tandem axle gives easier towing with a smoother ride.



**ALSO AVAILABLE:**

- Brakes – actuated from tractor hydraulic externals.
- Different tyre sizes.
- Elevator Shield – to prevent fine-cut material falling between elevator bars.

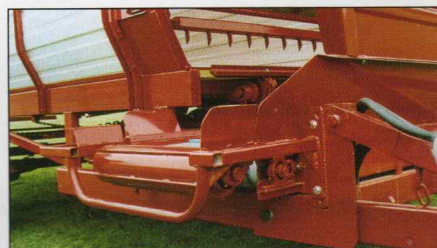
### ■ Round Bale Cradle

To assist in feeding out round bales. This attachment keeps the bale against the elevator/shredder.



### ■ Thrower

For all cross conveyor models – throws silage a greater distance from the side of the wagon.



### ■ Cross Conveyor Belt Extension

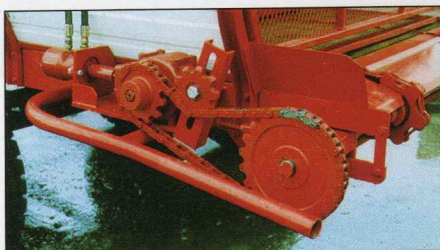
For putting material into troughs.



## HARVESTING ACCESSORIES

### ■ Rear Floor Drive Kit

For Models 105/130/100X/125X  
Due to large volumes of material being carted when harvesting, these large wagons can drive the floor from the rear to increase efficiency.



### ■ Roof and Cover

Used for front loading into wagons.  
(A high back gate may also be required.)



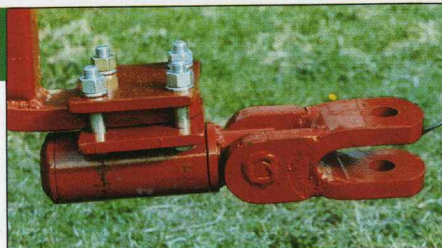
### ■ High Side and High Back Gate

Used for side loading.  
Two types of high back gates are available either as illustrated or as an extension.



### ■ Swivel Hitch

This flexible coupling is used between the 3 point Linkage Forager and Wagon for going over Silage Stacks/Clumps.

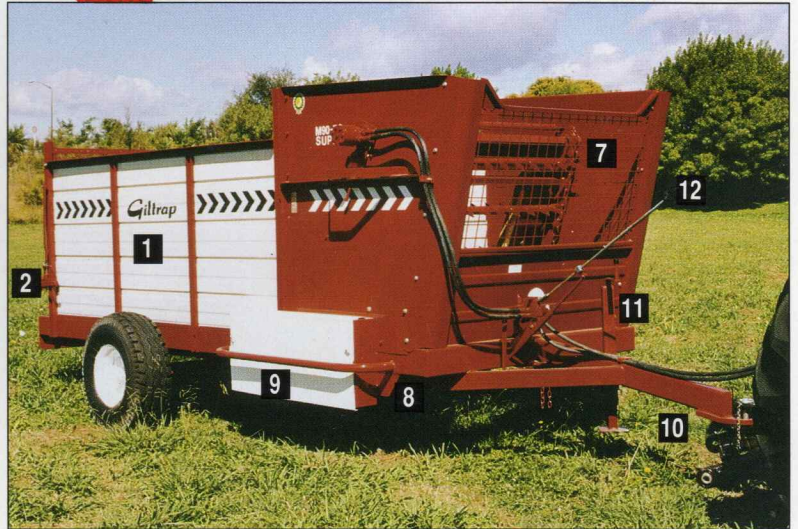
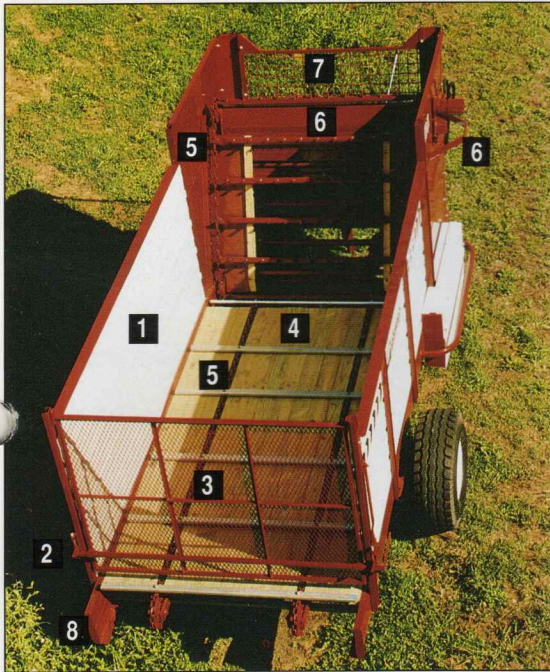


**ALSO AVAILABLE:**

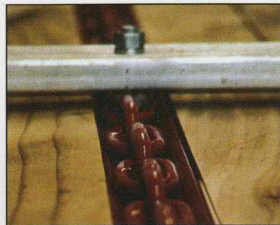
- Raising Blocks
- Hydraulic Hose Extensions.

# Giltrap

## WHY YOU SHOULD INVEST IN A '90 SERIES' GILTRAP



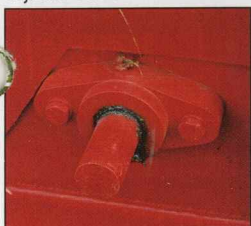
Lugged flotation tyre and adjustable axle



Floor slats bolted and chains tracked



Elevator top drive



Cast iron bearing



Elevator extends beyond side



Elevator adjuster



Strong extended pitch chain drive



Patented super hydraulic valve

### FEATURES

- 1 Colour galvanised swaged steel sides
- 2 Adjustable spring loaded gate catch
- 3 Fine mesh back gate
- 4 32mm tongue and groove tanalised pine floor
- 5 10mm high tensile chain (floor and elevator)
- 6 Top drive elevator shaft
- 7 See-through mesh and elevator visibility
- 8 Robust RHS chassis
- 9 Mechanism guard
- 10 T type drawbar – for manoeuvrability
- 11 Sturdy drawbar jack
- 12 Floor speed adjustable from tractor seat



Cast steel sprocket



Self locking tailgate catches

### '90 Series' Giltrap Forage Wagons include many special features, some of which are:

The patented Super System utilizes two hydraulic motors connected in line and a sensor valve making the total tractor hydraulic oil flow available to both motors. If necessary the sensor valve automatically adjusts the floor speed depending on the elevator load. All cubic capacities are taken at the height of the sides (not elevator height).

All wagons are double coat painted. All '90 Series' are of modular bolted construction. As market leaders Giltraps have built a reputation around reliability, strength and design. This gives Giltrap Forage Wagons the best resale value.

# Giltrap

## GILTRAP COMBINATION FORAGE WAGON AND FORAGER



M90-100X Combination

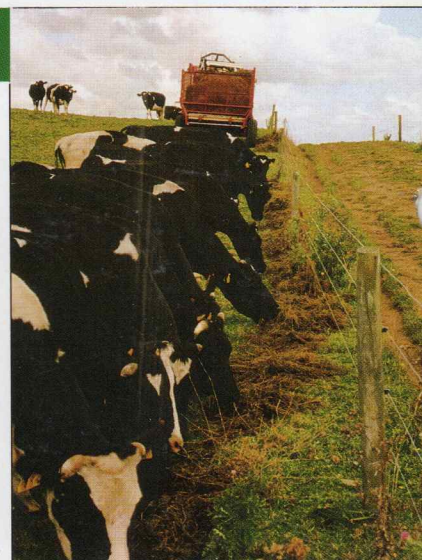
The combination range includes all '90 Series' Forage Wagons, consisting of a forage wagon and forager mounted within the drawbar.

This system eliminates any wastage on corners and evenly fills the complete wagon utilizing a special wide mouth chute.

When the forager is not being used it can be removed from the wagon and the drawbar slid back to virtually leave a standard Super Forage Wagon.

When harvesting the forager is fully oscillating to follow the ground contour independent of the wagon.

Your local Giltrap Agent is:



*Specifications, componentry and design subject to change through new technology and development, without prior notice.*

For further information on these or any other Giltrap products, please contact:



**ENGINEERING LTD**

7 Main North Rd., P.O. Box 83, Otorohanga, New Zealand Ph: 07 873 7199, Fax: 07 873 8131