

# Utility tractors

*QUENTIN  
CURRIE*

**Gutbrod 2400 DS, 2500 S, 2600 DS, 2600 DAS**

**The complete range for versatile use  
in the institutional, commercial and agricultural field.  
Economic – silent – multipurpose**



**Your best choice**

***GUTBROD***

# The new utility tractor program

- MORE POWER
- MORE SECURITY
- MORE COMFORT
- MORE FEATURES

Success obliges. The Gutbrod utility tractors have been modified in numerous details. Due to intelligent ideas of our technicians and in the ambition to offer machines according to the latest technology, Gutbrod has created this new generation of utility tractors.

Gutbrod offers the complete range of utility tractors. Different categories of engines both, with gasoline or diesel fuel, allow a decision for the most favourable machine, for every region, for all circumstances.

## The new utility tractors S:

- 2400 DS** the economic Diesel:  
10 kW (14 HP) 2 cyl. Diesel engine, watercooled
- 2500 S** the approved 4 cyl. gasoline engine, now with power:  
18 kW (25 HP) watercooled
- 2600 DS** now with a new, more powerful:  
15 kW (20 HP) 2 cyl. Diesel engine, watercooled
- 2600 DAS** with four wheel drive:  
50% more traction due to the solid front axle with big wheels - optimal hydraulic steering

All Gutbrod utility tractors are extremely silent due to watercooled multiple cylinder engines.



**1 The silent engines** are the „heart“ of the Gutbrod utility tractors. They are solid, economic in consumption and extremely durable. The professional „around the year“ use proves their efficiency every day.



**2 Three PTOs (front, central and rear)** bring the full power on to the attachments which means performance and reliability even under extreme conditions. The front PTO works independent of the engine clutch and the gearbox.



**3 The hydraulic system** is standard equipment of the Gutbrod utility tractors: Bosch pump 8 l/min., 150 bar, big oil volume. One single and one double-acting valve for the different lifting and swinging operations.

## Complete equipment



4



5



6



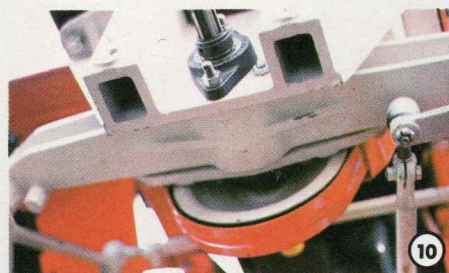
7



8



9



10



11



12



13



14



15

**4 The „new face“** is more than a stylish distinctive mark. Rectangular head-lights and a rigid PU-protection on the front part of the engine-hood give a modern face and assure more security.

**5 The dash-board** is clearly arranged and coated with a non-reflecting cover. The control and operation instruments are marked with international symbols. The hourmeter is standard equipment.

**6 GS-approved security** The new utility tractors bear this certificate. It proves that Gutbrod fulfils German standards for driver's security.

**7 The seat support** has been especially arranged for more clearance between the wheels in order to facilitate the mounting of snow-chains or mowers. All utility tractors are now equipped with a comfortable drivers-seat with hydraulic shock absorbing.

**8 Mounting the attachments** does not require tools and is effected with ease. Modern quick coupling systems allow a fast and simple change of accessories under all circumstances.

**9 The PTO engagement** is effected through a solid lever for more security in critical situations. At the same time the clutch of the front PTO has been equipped with a new tension system which guarantees a nearly 100% power transmission.

**10 Front axle and front PTO** are now supported independently in high quality ball respectively needle bearings for higher service life.

**11 The front wheel** is now situated in a very strong cast iron hub with ball bearings and 4 bore-flange. Thus, the wheel-change is considerably facilitated.

**12 The front mud guards** are standard equipment.

**13 The lawn tires** are very large with fine shaped lugs for very low pressure on the lawn. Agricultural tires are available upon request.

**The admissible axle-loads** have been increased to 450 kg (front axle) and 825 kg (rear axle) which means higher load capacity and additional attachment for heavy duty operations.

**14 Four wheel drive** for extreme conditions which request extraordinary high traction. The Gutbrod four wheel tractor has been developed especially for these purposes. The possibilities of use with these multipurpose and economic tractors are consequently increased.

**15 The hydraulic steering** makes the utility tractors very easy to operate. When working with heavy front implements the hydraulic steering facilitates the manoeuvrability for the ease of the operator.

## Lawn and hard court maintenance



### Lawn mowing

Mid-mounted rotary mowers with 1,30 m or 1,50 m cutting width. Gutbrod rotary mowers are mounted free-oscillating and therefore

follow exactly the surface of the soil. 5 positions cutting height adjustable. Hydraulic lifting.



### Front rotary mower

To be used for cutting higher grass or on soft surfaces, cutting width 1,50 m. Hydraulic lifting.



### Lawn sweeping

Grass and leaves are collected either while mowing or in a separate operation. Working width 1,20 m or 1,50 m.

Volume 1600 l or 2000 l. The rotating brush cleans the surface deeply, so that no felting will be possible.



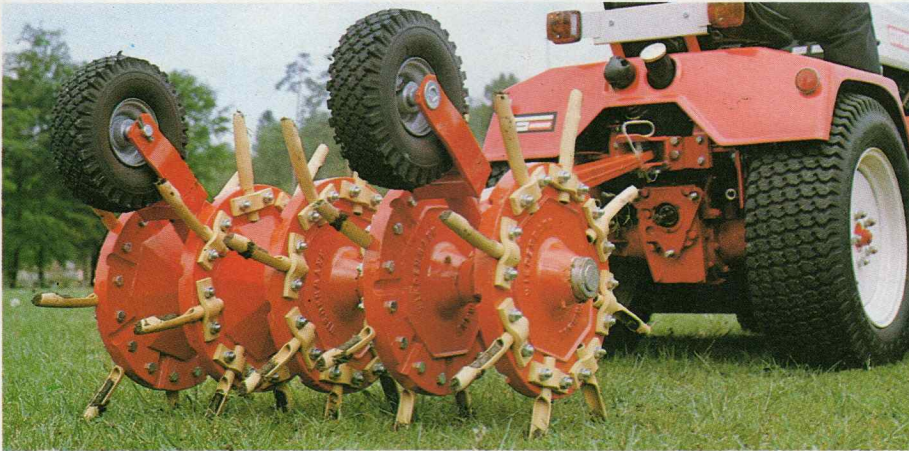
### Manual suction

For collecting leaves and litter at inaccessible places and emptying of waste paper baskets.



### Lawn and leaf vacuum aspirator

The cut grass is transported directly from the mower into the container of 1200 l. This attachment can also be used for collection of leaves. Drive through PTO or separate engine.



### Lawn aerator

Often used lawns, e.g. sports- and playgrounds, must be aerificated regularly. Aerators are available with different tools.



### Vertical blade aerator

For regeneration of the lawn and in case of thatched lawn surface the PTO-driven vertical blade aerator is used. Cutting depth is infinitely variable. Working width 1 m.



### Fertilizer distributor

The wheel-driven machine guarantees a fine distribution of the fertilizer. Working width 1,50 m, 1,75 m or 2 m.



### Centrifugal fertilizer distributor

Working width 0,80 m – 8 m adjustable. Recommended for working on unregular grounds.



### Surface spraying

For exact dosage of liquids against weeds or for liquid fertilizers. Width of spraying beam 5 m, content approx. 140 l.



### Hard court maintenance

With this universal combination all play- and sportsgrounds can be maintained. In one operation you can break up, level, brush and

smoothen the surface. Working width 1,20 m or 1,80 m.



### Rake

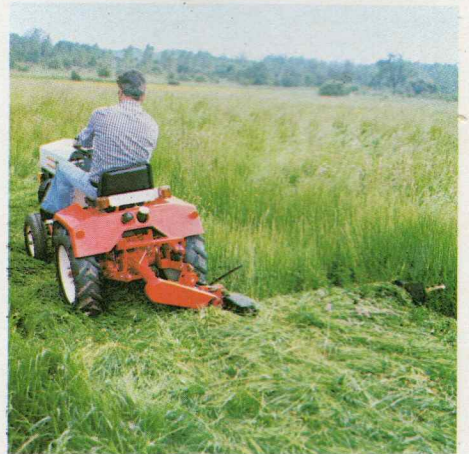
With the fine rake leaves, paper and other waste are removed from sportsgrounds and hard courts. Working width 1,20 m or 1,80 m.

# Landscape gardening, soil cultivation and special jobs



## Flail mower

The sturdy flail mower is used on wasteland and rough areas, working width 0,80 m, 1,08 m and 1,36 m.



## Reciprocating cutter-bar

for mowing high meadow grass. The double-knife pitman is not clogging, also when working under difficult conditions. Cutting width 1,20 m.



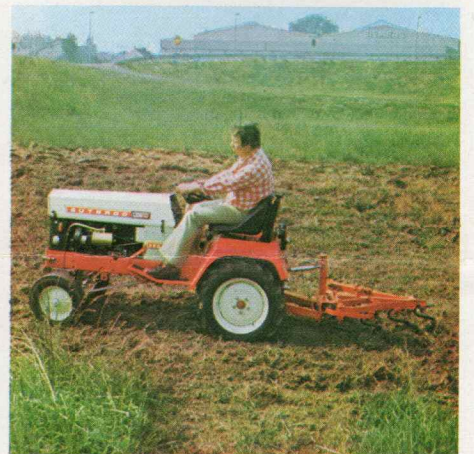
## Ploughing

The reversible mouldboard plough has a cutting width of 25 cm and a depth up to 26 cm.



## Rotary cultivator

The sturdy knives of the rotary cultivator ensure excellent soil mixture. The working depth can be adjusted up to 30 cm, working width 1 m. The crumbling is determined by the speed of the tractor.



## Cultivator, harrow

For deep loosening of the soil the cultivator with adjustable spring tines from 0,70 - 1,10 m and for superficial levelling the harrow, working width 1,50 m, are recommended.



## Front loader

Volume of shovel 110 l, working height up to 1,90 m, lift force 150 kg, breakout force 250 kg.



## Transport

Gutbrod tractors are admitted for trailer loads up to 1,5 t. You can choose between different versions.



## Special jobs

The compact construction of the Gutbrod utility tractors allow most versatile use, e.g. with the collecting frame for supermarket carts, which are collected rapidly and without effort.

# Sweeping and snow removal



## Snow caster

The snow caster can remove snow up to 60 cm with a working width of 1,10 m. The toothed spindle is working even through frozen snow banks. The chute rotation in all directions is effected from the seat.



## Sweeping

For removal of coarse dirt on streets and places, the 2-speed front sweeping

machine is used. Working width 1,20 m or 1,60 m.



## Snow sweeping

For fresh snow we recommend the 2-speed front sweeping machine. The elastic bristles allow the use of the snow sweeper on plane, hard surfaces. Working width 1,20 or 1,60 m.



## Dozer blade

The special blade bend ensures excellent snow flow. The safety flap device avoids damages in case of obstacles. The side adjustment operates either hydraulically or through a lift and swing system from the driver's seat.



## Spreading

Ice and snow can be removed in one operation. With the dozer blade the snow is thrown aside, while the trailed spreader (volume



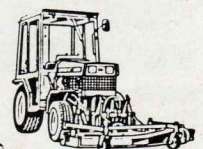
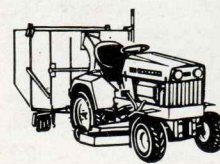
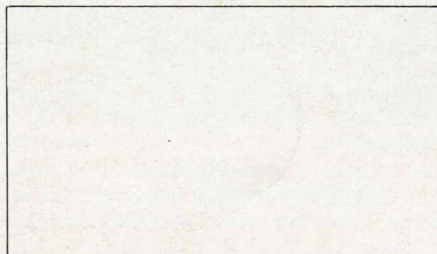
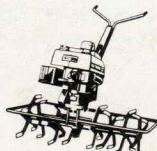
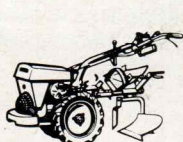
200 - 350 l) distributes salt, etc. The hooked-up spreader (right picture) should be used on narrow walks for better manoeuvrability.

Technical data	Type 2400 DS	Type 2500 S	Type 2600 DS	Type 2600 DAS
<b>Engine</b>	2 cylinder, 4-stroke Diesel engine, 10 kW (14 HP), 3000 rpm., 510 ccm, watercooled, fuel pump	4 cylinder, 4-stroke gasoline engine, 18 kW (25 HP), 3400 rpm., 850 ccm, watercooled, oilbath airfilter	2 cylinder, 4-stroke Diesel engine, 15 kW (20 HP), 2900 rpm., 850 ccm, watercooled, electric fuel pump, max. torque 56 Nm at 2000 rpm.	
<b>Transmission</b>	5 speed toothed wheel transmission, 4 speeds forward, 1 reverse, differential lock	10 speeds toothed wheel transmission, 8 speeds forward, 2 reverse. Ideal speed range. Differential lock		
<b>Clutch</b>	Single disc dry clutch			
<b>Wheels</b>	Low pressure lawn tires front 18 x 7.00-8 rear 27 x 8.50-15 Agricultural tires for rear wheels on option 27 x 8.50-15 STG		front 20 x 8.00-10 rear 27 x 8.50-15 Agricultural tires on option: front 5.00-10/T 84 rear 27 x 8.50-15 STG	
<b>Speeds</b>	1,1 – 18 km/h	0,5 (crawling speed) – 20 km/h		
<b>Brakes</b>	Service brake: external band on rear wheels, parking brake: gear disc brake	Service brake: internal shoes on rear wheels, also as single wheel brake. Parking brake: gear disc brake		
<b>Standard PTO's</b>	front and center: engine PTO with separate clutch, independant from drive clutch, rear: transmission PTO 1000 rpm., 1 1/8"			
<b>Hydraulic system</b>	Bosch high pressure hydraulic system, 2 standard valves: 1 single acting for lifting, 1 double acting for swinging, pump capacity 8 l/min, 150 bar. Oil volume 1,5 l with standard additional tank			
<b>Electric equipment</b>	12 Volt generator 120 Watt	12 Volt generator, 240 Watt		
<b>Other features</b>	Battery 12 V, 36 Ah, 2 head lights, combined rear, direction and licence-plate lights, warning lights, control lamps for oil pressure, charging current, parking brake and direction lights. Hour-meter			
<b>Other features</b>	Easy working worm gear. Front axle with needle bearings. Comfortable drivers seat with hydraulic adjustment to driver's weight. Turnable trailer coupling. Tool box, 14 l fuel tank			
<b>Measurements</b>	Length 1960 mm Width 960 mm Height 1145 mm	1960 mm 960 mm 1145 mm	1960 mm 960 mm 1145 mm	1995 mm 1070 mm 1150 mm
<b>Weights</b> tractor weight: axle weight front/rear: total weight: linkage load:	505 kg 450/825 kg 1000 kg 1500 kg	505 kg 450/825 kg 1000 kg 1500 kg	585 kg 450/825 kg 1000 kg 1500 kg	640 kg 450/825 kg 1000 kg 1500 kg



The new utility tractors bear this certificate (approved security). It proves that Gutbrod fulfils German standards for drivers security and better environment conditions.

**Further Gutbrod machines for maintenance works are available.  
Please order the respective documentation.**



**Gutbrod-Werke GmbH Postfach 60 D-6601 Saarbrücken-Bübingen Tel. 06805/791 Telex 04 429119**