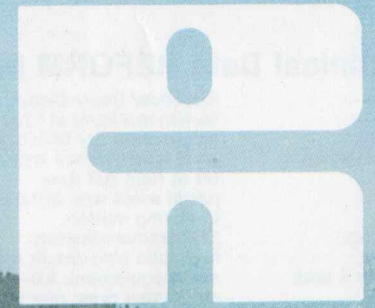


REFORM MULI

QUENTIN
CURRIE



igl-design



REFORM MULI 33

REFORM Muli 33 is the new Comfort Muli for medium capacities, made by Reform.

Tailored to the requirements of most mountain farms. Its for you, if you are looking for a lean, light and favorably priced universal transporter.

Equipped with single tires your Comfort Muli 33 is only 1.57 metres wide, allowing it to get up all the hills, even through narrow defiles.

The Muli 33 is powered by a strong, aircooled Deutz Diesel with 24 kW (33 HP) for a total weight of 3,800 kgs. This gives you a lot of performance on road and slope. With its oilpressure double circuit 4-wheel brake system you will drive safely — all the year round.

Fitted with a loading trailer the Muli 33 will transport 10 m³ dried hay. Hydraulic pickup-lifting, continuously adjustable scraper floor drive and the new REFORM loading unit with 2-part oscillating loader assure high work capacity.

Typical for Reform.

Advantages of the Comfort Muli's 33/50/150

Silenced Driving Comfort. Safety cabin with drivers position positioned on rubber bearing — maximum vibration and noise damping ①.

Work with a clear View. Made possible by windshield washing system with 2 wipers, operating at 2 speeds.

High Level Ground Clearance for Clean Fodder. Robust portal axles at front and rear ②, for clean uptake of large loading swaths without any running-over.

High level of Operational Safety. Differential lock at front and rear for specially difficult operations.

Working Comfort at the Working Position. All levers are within easy reach ③. Hanging pedals linked with hydraulic clutch operation — for easy operation.

Quick Switch to Single Tire Operation. Due to quick coupling for twin tire operation at the rear ④.

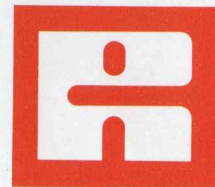
High Loading Capacity. New loading unit with 2-part oscillating loader — quick, fodder-saving loading.

Easy Fodder Transport. Robust cutting unit with up to 6 knives.

QUENTIN
CURRIE



igl-design



REFORM MULI 50 150

REFORM Muli 50/150 — the bullish Comfort Mulis for high capacities — made by Reform. Offers power for efficient production in mountainous areas.

Fitted with the proven Perkins 3-cylinder Diesel, 34 kW, with direct injection — easily started and high on performance in all mountain work. His 46.2 HP for a total weight of 5 tons make him one of the strongest. Hydrostatic steering makes the Comfort Muli 50/150 easy to steer ③.

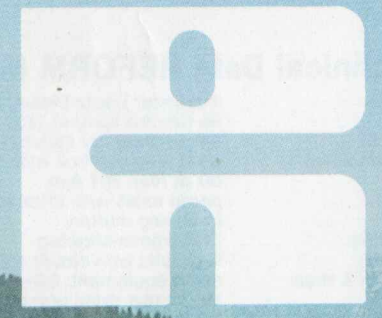
Steering force expenditure at the wheel with 5 tons total weight = 2 kilos. Its double circuit servobrake acting on 4 wheels guarantees maximum safety.

This allows the achievement of 30 percent better braking with less pedal pressure (drawing). The rubbermounted safety cab of the Muli 50/150 can be completed through a component system with doors and a rear panel to turn into a heated cab.

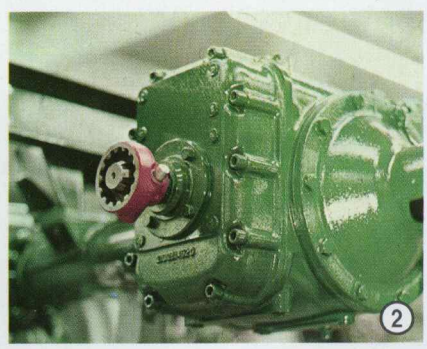
The new loading trailer for 13 m³ (Muli 50) and 18 m³ (Muli 150) dried hay offers notable advantages, e.g. motor-hydraulic pickup lifting ①, or hydrostatic scraper floor drive and quick coupling of chassis and loading trailer for quick conversion (see above and No. 2).

By the way, only the Comfort Muli 50/150 has the loading trailer, that disconnects itself. Perfection in detail — perfect driving and operating comfort.

QUENTIN
CURRIE



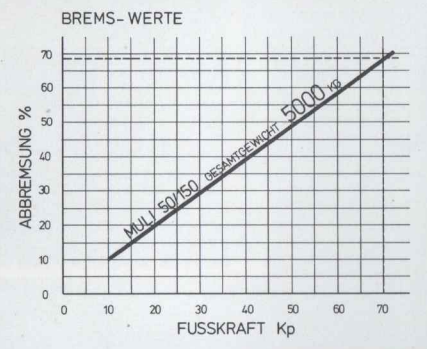
1



2



3



igl-design



The Muli's wide range of use is remarkable. For example as a transporter also in difficult terrain with 3-side tipper or loading ramp for up to 3 tons payload (Muli 50/150).

Used with a snow plough or rotary snow plough attachment it makes you independent of communal snow removal.

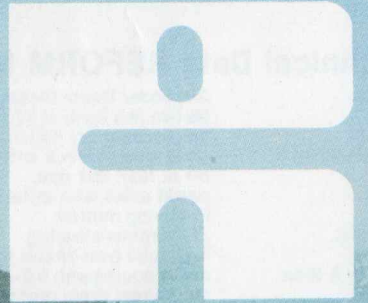
Fitted with timber moving attachment and a rope winch your Muli becomes an enormously strong forestry tractor. Tractive force: 5,000 kg, lifting force: 2,000 kg.

With the proven double-knife front mowing unit, hydraulically driven, with 2 m cutting width, daily grass cutting becomes a pleasure.

Mulis have proven themselves internationally. With a flail forage harvester it has offered successful problem solution to Norwegian farmers.

Mulis fitted with a rear-mounted 3-point linkage have given good proof of themselves in soil cultivation and fertilizer spreading in Brazil.

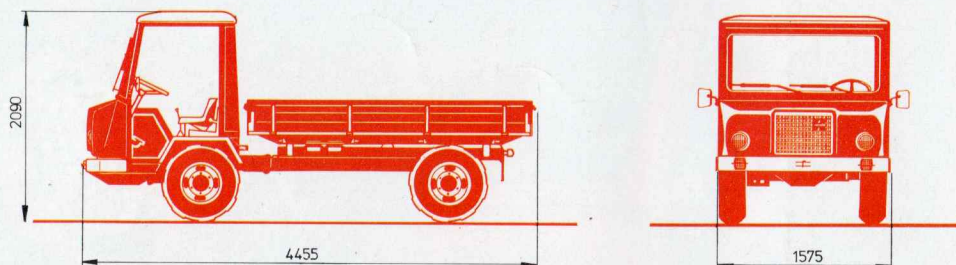
QUENTIN
CURRIE



igl-design

Technical Data REFORM Muli 33

Motor:	2-cylinder Deutz Diesel, 24.3 kW (33 HP) at 2700 rpm, aircooled; max. torque 96 Nm (9.8 kpm) at 1700 rpm.
Clutch:	single plate dry clutch, hydraulically operated.
Transmission:	reversible gearbox with 8 forward and 8 reverse gears (2.3 to 25 km/h) power take-off at rear: 607 rpm.
Axles:	portal axles with differential lock front and rear, front wheel drive can be engaged in driving motion.
Steering:	ZF-Gemmer-steering.
Brakes:	hydraulic twin-circuit four-wheel brakes, mechanically acting parking brake.
Wheels & tires:	serial equipment: 9.0—16 AS in front, 6.50—16 AS twin at rear or 9.0—16 AS single rear tires; rear tires on request: 9.0—16 AS twin with quick attachment, 9.0—16 AS inner/6.50—16 AS external (with quick attachment).
Drivers cab:	rubber-mounted all-steel chassis with safety frame and health seats.
Electrical Equipment:	headlights with high and low beam, brake-, stop and indicator lights at rear, 2 indicators in front, 12 V battery.
Dimensions:	vehicle length 4210 mm, vehicle width 1575 mm (with single tires), vehicle height 2090 mm, 1760 mm (with twin tires 6.50—16 AS), wheel base 2400 mm, ground clearance (under axle housing) 290 mm
Weight:	permissible axle load in front 1850 kg, at rear 2400 kg, dead weight of chassis 1280 kg, permissible total weight 3800 kg payload (according to attachments) up to 2500 kg.
Hill climbing ability:	60 % on dry, compact ground in the terrain.



Implements:

Loading ramp:	length 2750 mm, width 1580 mm, height of side-board 300 mm
Tipping platform:	hydraulic three-way tipping platform, length 2750 mm, width 1650 mm, height of side-board 300 mm.
Scraper floor:	Scraper floor drive via continuously adjustable feed gear, forward and reverse.
Loading trailer:	loading unit with 2-part oscillating loader, loading volume 10 m ³ dry hay.
Manure spreading unit:	a) four upright rollers, b) one horizontal roller, c) sideways manure spreader SACO for embankments, dams, etc.
Liquid manure tank:	vacuum tank 2000 l capacity.

REFORMWERKE

Bauer & Co. Gesellschaft m. b. H.

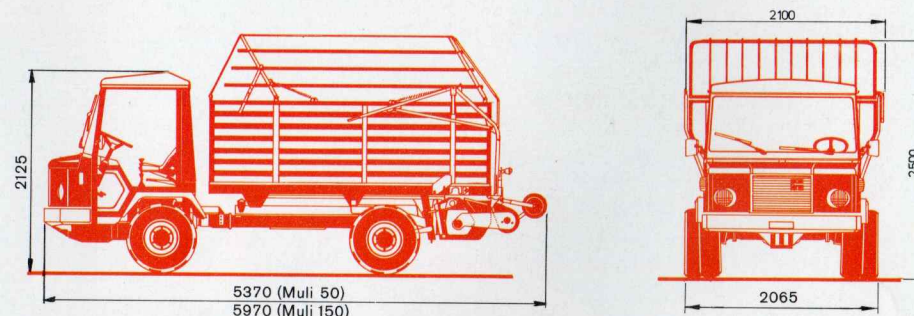
A-4600 Wels, Austria

P. O. Box 192, Phone (0 72 42) 73 77 227

Telex 025-539

Technical Data REFORM Muli 50

Motor:	3-cylinder Perkins Diesel, 34 kW (46.2 HP) at 2200 rpm, watercooled, direct injection, torque 167 Nm (17 kpm) at 1400 rpm.
Clutch:	single plate dry clutch, hydraulically operated.
Transmission:	Reversible gearbox with 8 forward and 8 reverse gears (2.3 to 30 km/h) power take-off at rear 613 rpm, pto at side and front on request.
Axles:	portal axles with differential lock front and rear, front wheel drive can be engaged in driving motion.
Steering:	hydrostatic steering (ZF-servostat).
Brakes:	hydraulic twin-circuit four-wheel servo brakes and independent handbrake acting on front wheels.
Wheels & tires:	serial equipment: 9.0—16 AS in front, 6.50—15 AS twin in rear, on request rear tires 9.0—16 AS single, 9.0—16 AS twin (with or without quick attachment), 9.0—16 AS inner: 6.50—16 AS external (with quick attachment); 245—16 SC in front, 245—16 SC single at the rear (road profile).
Drivers cab:	rubber-mounted all-steel chassis with safety frame and health seats; can be extended to full drivers cab (2 doors, rear panel, heating).
Electrical equipment:	headlights with low and high beam, 2 indicators in front, brake-, stop and indicator lights at rear, 12 V battery
Dimensions (chassis):	vehicle length 4300 mm, vehicle width 2065 mm (with twin tires 6.50—16 AS), vehicle height 2125 mm, wheel base 2400 mm, ground clearance (underneath axle housing) 300 mm
Weight:	permissible axle load in front 2400 kg, at rear 2800 kg, permissible dead weight 1570 kg, permissible total weight 5000 kg, payload (according to attachments) up to 3400 kg
Hill climbing ability:	60 % on dry, compact ground in the terrain.



Implements:

Loading ramp:	length 2750 mm, width 1750 mm, height of side-board 300 mm
Tipping platform:	hydraulic three-way tipping platform length 2730 mm, width 1650 mm, height of side-board 300 mm.
Scraper floor:	Hydrostatic scraper floor drive, scraper floor feed forward and reverse, continuously adjustable in reverse.
Loading trailer:	loading unit with 2-part oscillating loader, loading volume 13 m ³ dried hay.
Manure spreading unit:	a) four vertical shredders, b) one horizontal shredder, c) sideways manure spreader SACO for embankments, dams, etc.
Liquid manure tank:	vacuum tank, 2000 l capacity.
Rope winch:	tractive force 3500 kp or 2000 kp front attachment frame for snow plough, rotary snow plough, front mowing unit "Busatis", 2 m cutting width.

Technical Data REFORM Muli 150

as for Muli 50, except for:

Dimensions (chassis):	vehicle length 4965 mm, wheel base 3000 mm
Weight:	dead weight of the chassis 1600 kg
Loading ramp:	length 3450 mm
Scraper floor:	length 3390 mm
Loading trailer:	loading unit with 2-part oscillating loader, loading volume 18 m ³ dry hay.
Liquid manure tank:	vacuum tank, 2400 l capacity.

All data without guarantee, constructional changes reserved.