

# **Hatzenbichler**

**AGROTECHNOLOGY**

## **PNEUMATIC SEEDERS**

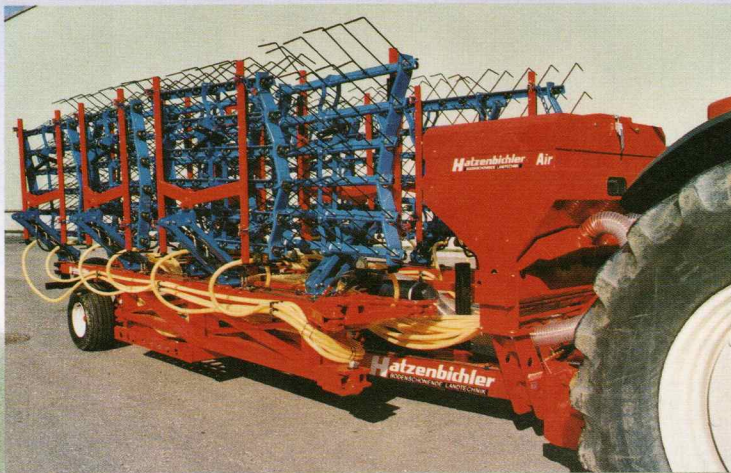


# AIR 8 • AIR

*With electric driven fan unit*      *with hydro*



*AIR 8, fitted on comb harrow 6 m (sowing grass-clover mixtures into cereals)*



*AIR 24, fitted on a semi-mounted comb harrow 18 m (transport position)*



*AIR 16, fitted on 6 m Vertikator, for sowing and oversowing*

*Pneumatic seed-box to broadcast*

- to fit on any type of implement
- strong robust construction
- easy to fit
- very simple to handle
- exact broadcasting and distribution of
- working width from 3 to 18 meters
- Air 8 flexible drive cable, transmission i
- computer
- Air 16 und Air 24 – electronic drive with

The seed box of the **Air 8** with a volume of **150 litres**, **Air 16** an **Air 24**, with a volume of **400 litres** and **650 l** has a **changeable dosage roller** and is blown into the **8, 16, 24** tributor plates. For each outlet, a **separate compartment** is provided. Therefore we have an **exact distribution** of the seed over the field, given by a ground wheel, with a flexible **driven cable** (or **sensor**) by a **sensor** on the ground wheel, which sends impulses to the **computer** quantity from **3 - 400 kg/ha** (depends on the seed, dose rate). If fitted, the output is **changed manually**, with the electronic **control seat**. An agitator prevents bridging of the seed in the seed box. To change the **rough** dosage roller against a **fine** one.



*AIR 8 fitted on 3 m Vertikator for the regeneration of the grassland, for sowing and oversowing*

# 16 • AIR 24

hydraulically driven fun unit

for all types of seeds

no effect on the seed (no affection by wind)

infinately variable, or electronic drive with board

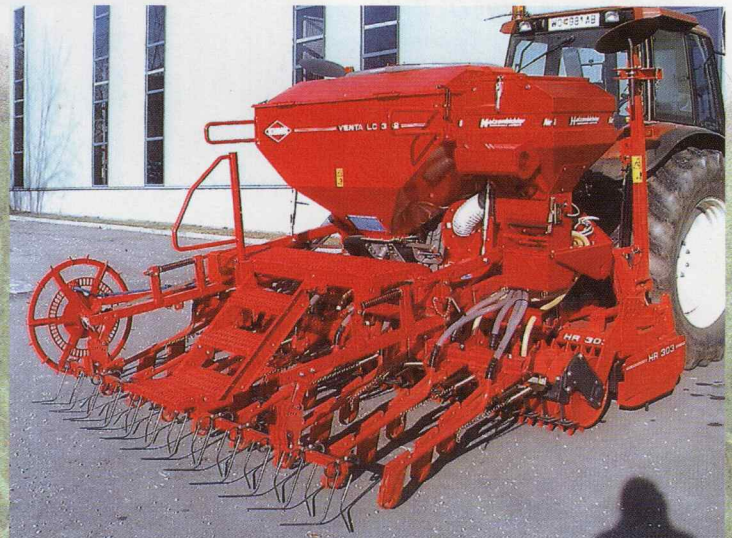
board computer

has two electric fans of 12 volt. The seed-boxes from the tractors have a hydraulically driven fan. The seed comes over 6 or 24 hose pipes and is evenly distributed on special disc on the dosage roller is responsible.

over the whole working width. The seeding mechanism is driven by **Air 8** to a infinitely variable **Oil-bath-transmission**. Or it can be driven by a **servo-electronic motor**. Both systems allow a **seed dosage roller** used and working width). When the gearbox is electric drive this can be done **comfortably from the tractor driver's seat** (continuous seed flow). For small seeds, it's easy to



*AIR 8 during refilling of the tank (big lid for easy refilling, big window to control seed level)*

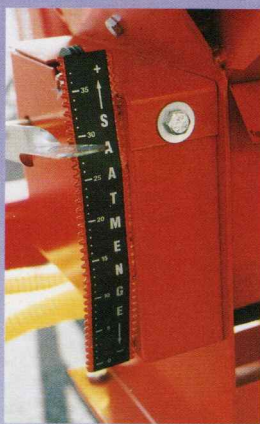


*AIR 8 fitted on a power harrow and seed drill (sowing grass-clover mixtures into cereals)*

*AIR 16, fitted on comb harrow 12 m (sowing grass, clover into cereals)*

# MECHANICAL DRIVE

The system is driven by a drive wheel – flexible drive cable (ø 12 mm) to the oil-bath transmission. The adjustment of the output is done by hand.



## POSSIBILITIES TO FIT



*AIR 8 fitted on a sub-soiler, to broadcast green covers*



*AIR 8, fitted on a chisel plough, foldable, to broadcast green covers*



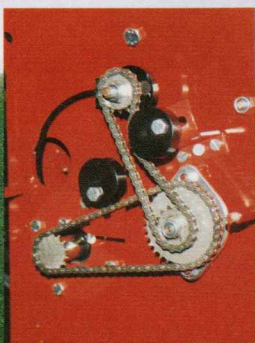
*AIR 8, fitted on a disc harrow, to broadcast green covers or for sowing*

## ELECTRONIC DRIVE – BORDCOMPTER



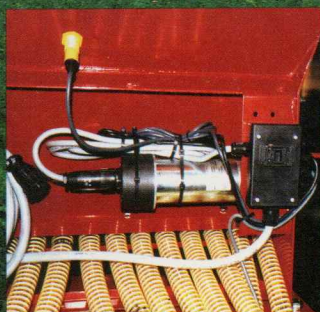
### Functions – Hatzenbichler Bordcomputer:

- **Output** (kg/ha) can be adjusted in % during work
- **Speed** (km/h)
- **Area counter** (ha)
- **Time** (start- stopwatch)
- **Seed in tank** (continuous information about the content in the tank)
- **Battery charging level** (control of the charging level of the battery)
- **Output** (Information about the output (kg/ha) during work)
- **Control of revolution** (dosage roller – agitator)
- **Autom. calibration** (calibration test)
- **Possibility to save 10 different programs** (according to seed and calibration)
- **Possibility to save different working width**
- **Easy to handle due to picture symbols**
- **Printer connection** (possibility to print settings)



*Drive from the e-motor to dosage roller/agitator, sensor to control the revolutions on the dosage roller*

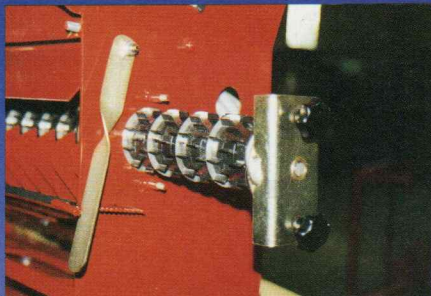
*An electric motor. receiving impulses. drives the dosage roller*



*Drive wheel with sensor sends impulses to the electric motor*

# DETAILS

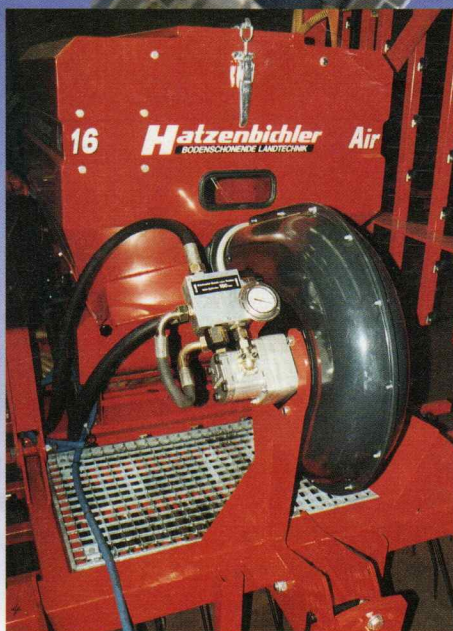
Coarse dosage roller with bearing



Calibration tray for Air 16



On the test unit of the Hatzenbichler Company, different seeds are being tested for their broadcast abilities



Adjustable hydraulically driven fan blower with pressure gauge



Air 16, fitted on comb harrow 12 m (position transport)

Model	Outlets	Volume of tank	Drive	Blower	working width	max. quantity*
<b>Air 8</b>	8	150 litres	mech. or electric	2 x electric	6 m	40 kg / ha
<b>Air 16</b>	16	400 litres	electric	1 x hydraulic	12 m	80 kg / ha
<b>Air 24</b>	24	650 litres	electric	1 x hydraulic	18 m	160 kg / ha

\* depending on the working width

# Hatzenbichler

AGROTECHNOLOGY

A-9433 St. Andrä, Fischering 2 • Phone +43/4358/2287 • Fax +43/4358/2208  
e-mail: landtechnik@hatzenbichler.com • internet: <http://www.hatzenbichler.com>