

A 20

Holder

Special-Purpose Four-Wheel Drive Tractor



A HOLDER CAN TACKLE ANY JOB!

4-Wheel

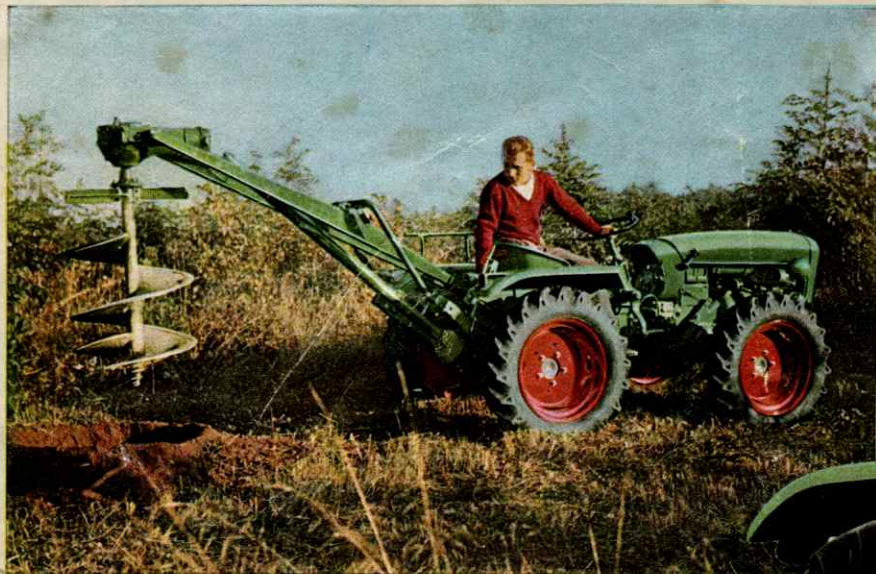
- Drive
- Steering
- Brakes

Hydraulic

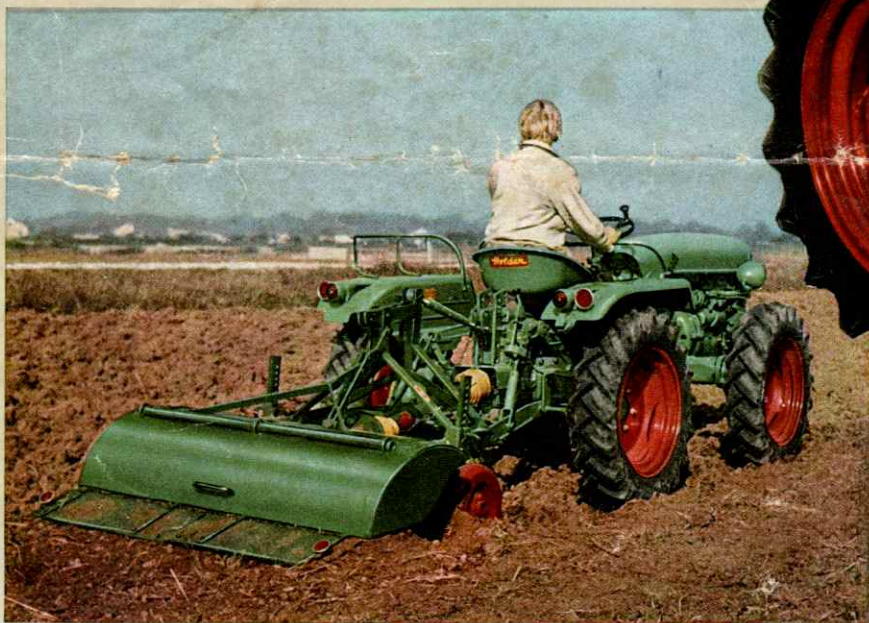
- Steering
 - Voith Hydro-matic Clutch
 - Differential Lock acting on all 4 wheels
 - Power Lift (monoblock hydraulics)
- 12-Speed Gearing
8 forward
and 4 reverse gears
0,6-20 km/h (0,3-12,17 mph)

Holder

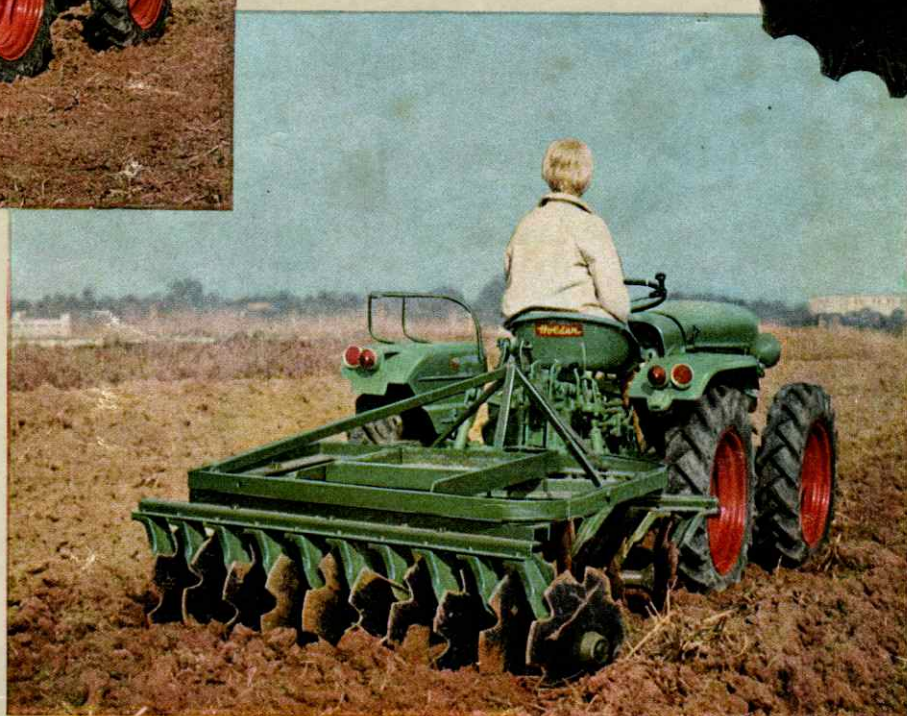
Special-P



A 20 with Post Hole Digger



A 20 with Rotary-Tiller



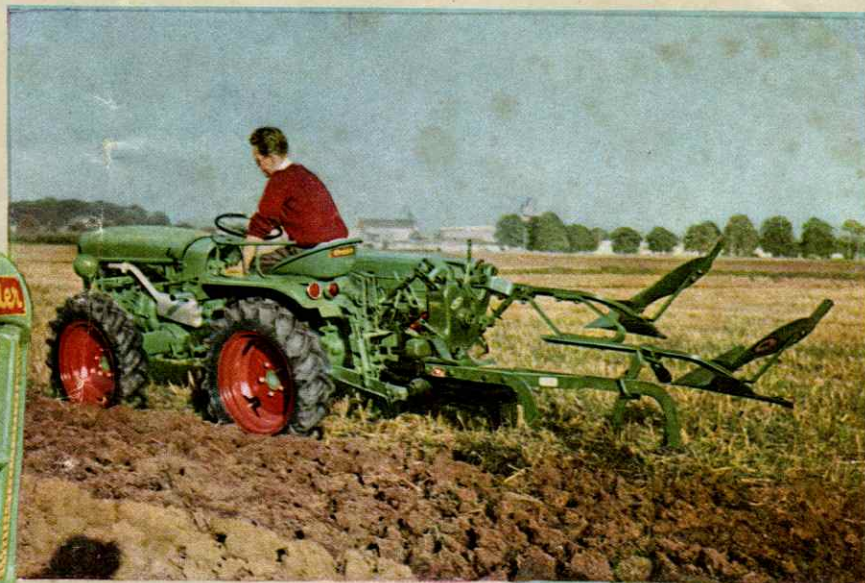
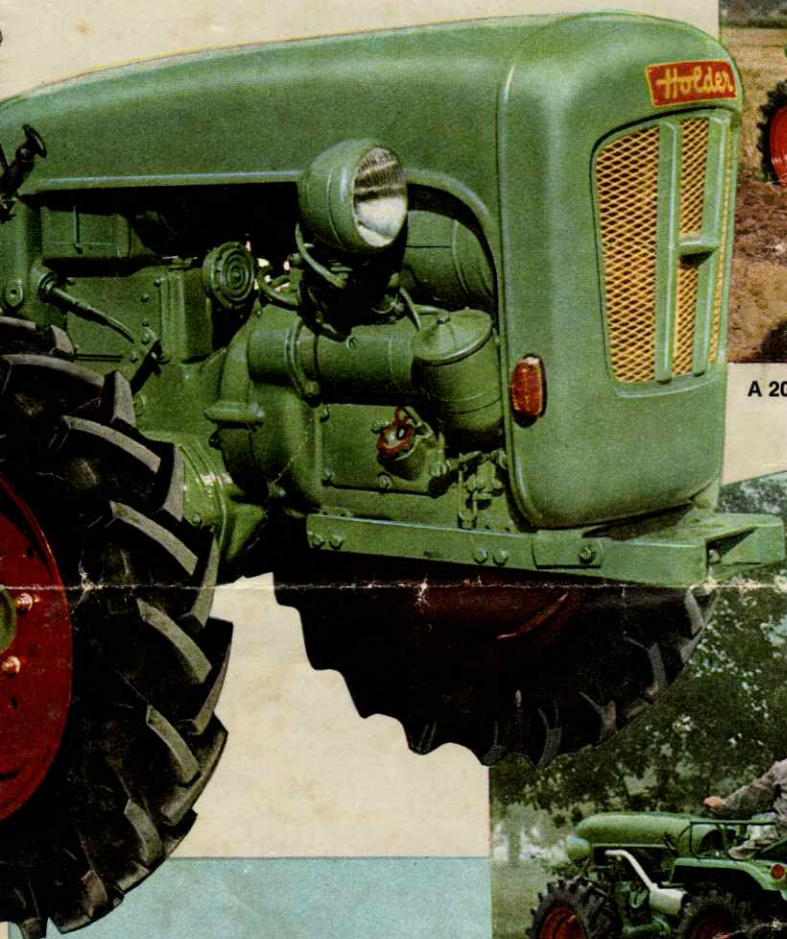
A 20 with Disc-Harrow



GEBRÜDER HOLDER · MASCHINEN

Purpose Four-Wheel Drive Tractor

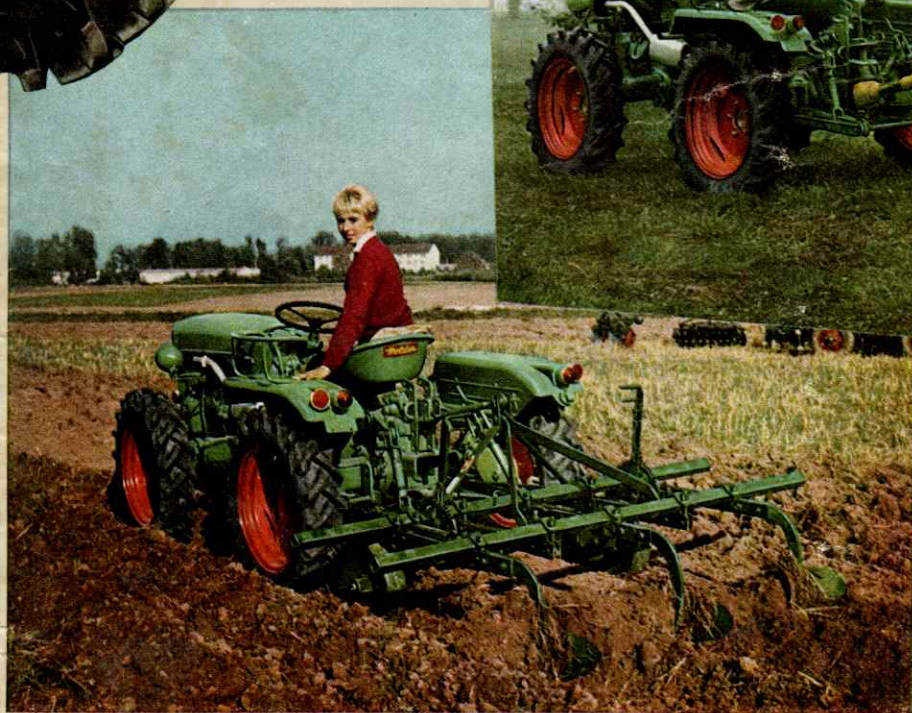
A 20



A 20 with Plough



A 20 with Holder Trailed Sprayer



A 20 with Ridger

FABRIK · 7418 METZINGEN/WÜRTT.

Technical Data:

Construction:	Monoblock construction with four-wheel steering, four-wheel-drive and brake acting on all wheels.
Engine:	Easy starting, aircooled 20 h.p., 2-cylinder four-stroke diesel engine. Automatic speed governor, Bosch injection system. Highly economical in consumption, minimum wear, maximum service life of engine.
Tank capacity:	20 ltr. (4½ imp. gal.), micronic fuel filter built into tank.
Air filter:	Oilbath swirl design, pattern LOZ with cyclone pre-filter.
Clutch:	a) Oil-hydraulic Voith hydromatic clutch; utmost preservance of transmission. b) Fichtel & Sachs single-plate dry clutch, type K 10.
Transmission:	8 forward and four reverse gears, helical bevel gears. Four-wheel drive via two differentials. Differential lock front and rear, both hydraulically engaged by lever.
PTO:	Controllable standard power-take-off shaft, 540 r.p.m. (splined stub per form A of German standard DIN 9611).
Steering:	Four-wheel steering with hydraulic ZF steering (spindle hydro-steering).
Four-wheel brakes:	Internal expanding foot and hand brake, both acting on all four wheels. The hand brake is rod-shaped.
Trailer hitch:	Height-adjustable.
Hydraulics:	Standard monoblock assembly, consisting of: Bosch hydraulic pump, control unit, working cylinders, lifting shaft, pipelines etc. Most modern arrangement. Working power of hydraulics 540 mkg, lifting power at draft arm 1750 kg (3850 lbs).
Implement lift:	Standard three-point implement lift with tool bar, hydraulic operation (size 1 of German standard DIN 9674).
Electrical equipment:	Bosch starter 1,8 h.p., 12 V, 135 W dynamo, 12 V, 56 AH battery; two headlights with distance and dipped light, parking lights, blinking system on tractor, also arranged for two trailers. Two rear lights with brake light, socket for trailer lighting, horn, dashboard main switch, pre-glow starter, service hour meter and temperature gauge.

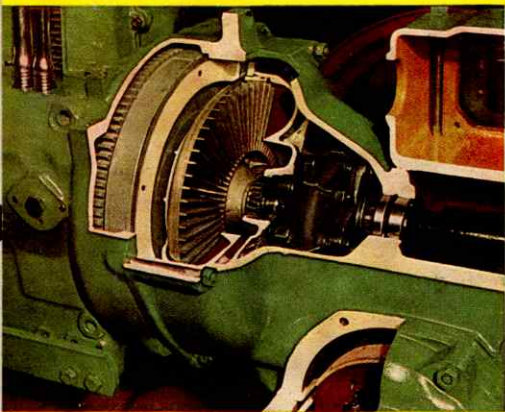
HOLDER found a new way:

Our new 20 h.p. special-purpose four-wheel drive tractor type A 20 has been especially developed for being used where very difficult soil conditions are prevailing. Its interesting and approved construction is based on many years' experience. The extraordinary high tractive power — no matter what sort of soil condition is given — is due to its real four-wheel drive transferred to four wheels of equal size, and its ideal weight distribution. Almost the complete engine performance can thus be converted into tractive power. Moreover, ground pressure and backlash are surprisingly low — what means an additional important advantage. Whether in deep slough or on the road — you always can operate your A 20 tractor with great facility, security and exactness. Its hydraulic four-wheel steering represents a real comfort when driving the tractor. The favourable centre of gravity, weight distribution and torsion possibility of the drive axles to each other guarantee an unsurpassed cross-country mobility and security under any condition to be met. Its four-wheel brake ensures special security upon which you can rely even on the steep slope. We need not say that all standard three-point implements can be used in connection with our A 20 tractor. It represents just the right machine for extreme soil conditions in agriculture, mountain- and marsh-farms, rice-fields etc. as well as for other special purposes. Taking advantage of this peak-performance tractor will pay back your investment on it within short.

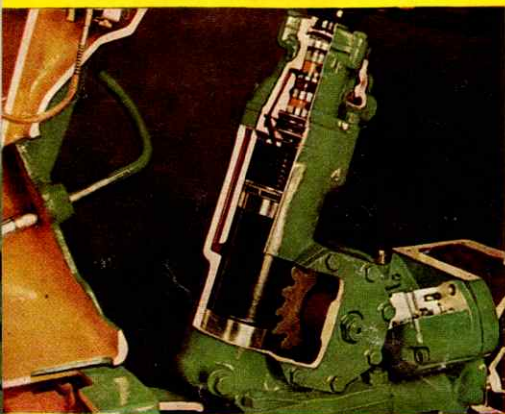
For use in special cultivations e.g. in fruit and vine growing areas, in citrus, olive and coffee plantations etc. we should like to recommend our model A 21 S with its extra-low, narrow and short design and its high ground clearance. Measurements are listed on the following schedule. Please ask for our special leaflet A 21 S.

Travelling speeds per hour at full engine revolution					Measurements and weights						
Tyres front and rear		A 20 6,50 — 20 AS		A 21 S 7,00 — 18 AS		Tyres front and rear		A 20 6,50 — 20 AS		A 21 S 7,00 — 18 AS	
		km/h		mph				mm / ft. in		mm / ft. in	
Forward:	km/h	mph	km/h	mph	Track width	1010	1125	1250	660	780	900
1st gear	0,6—1,2	0,4—0,7	0,5—1,1	0,3—0,6	Max. width	3' 4"	3' 8"	4' 1"	2' 2"	2' 6"	2' 11"
(creeper speed)					Max. height	1190	1310	1430	835	847	1075
2nd gear	2,0	1,2	1,9	1,2	Min. ground clearance	3' 11"	4' 4"	4' 8"	2' 9"	2' 10"	3' 6"
3rd gear	3,4	2,1	3,1	1,9	Seat height (loaded)		1255			1050	
4th gear*	5,3	3,3	4,9	3,0	Min. ground clearance		4" 1"			3' 5"	
5th gear	4,4	2,7	4,0	2,5	Wheelbase		900			660	
6th gear	7,6	4,7	6,8	4,2	Min. inside turning radius		3			2' 2"	
7th gear	12,3	7,6	11,2	6,9	Front axle pressure kg/lb		380			235	
8th gear	19,5	12,1	17,9	11,1	Rear axle pressure		1' 3"			9"	
Reverse:					Weight		1460			1300	
1st gear	1,6	1	1,5	0,9			4' 9"			4' 3"	
2nd gear	2,8	1,7	2,6	1,6			1560			1400	
3rd gear	4,6	2,9	4,2	2,6			5' 1"			4' 7"	
4th gear	7,3	4,5	6,6	4,1			685 kg			605 kg	
							1500 lb.			1.330 lb.	
							480 kg			445 kg	
							1.050 lb.			980 lb.	
							1165 kg			1.050 kg	
							2.570 lb.			2.310 lb.	

The track width can be varied by fitting hub spacers. The trailer hitch is adjustable for height.
We reserve the right to make alterations in design



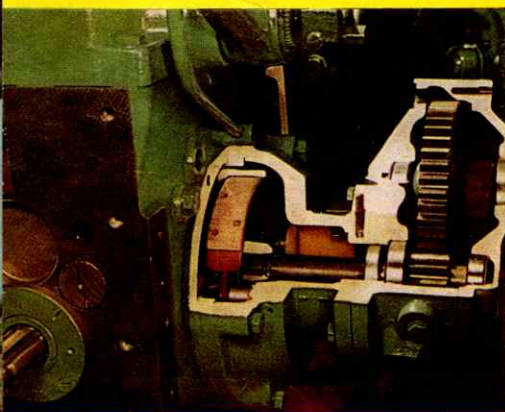
This special four-wheel drive A 20 tractor combines the latest technical progress with the requirements in practice. Our illustration figures the oil hydraulic clutch being built in for security and comfort. Furthermore, it guarantees starting in each gear without the least jerk and saves thus the boring switching work. No stalling of engine or rearing of the tractor has to be feared in case of difficult tractive work or when driving in mountainous regions. Under extreme conditions the hydraulic clutch serves as preservative of the transmission contributing towards long service life of your A 20 tractor.



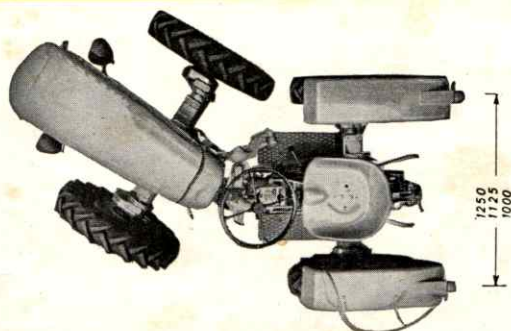
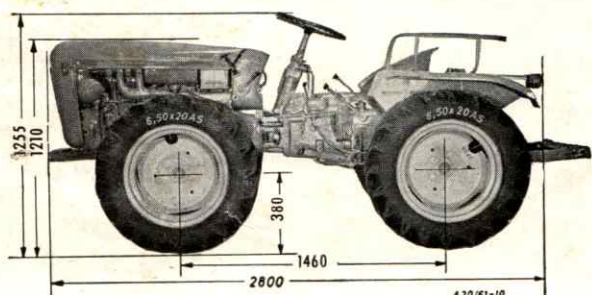
No matter whether you are working with your special-purpose four-wheel drive tractor in deep slough or you are driving on the road, it is always easy to operate — even with one hand only. The "mystery" for this important relief in work when driving the tractor is represented by its four-wheel hydraulic steering. Maximum steering security, high manoeuvrability, exactness of steering and reliability under all working conditions are distinguishing the A 20 tractor. The cross-section is illustrating the ZF-spindle-hydro-steering with the corresponding Bosch oil pump.



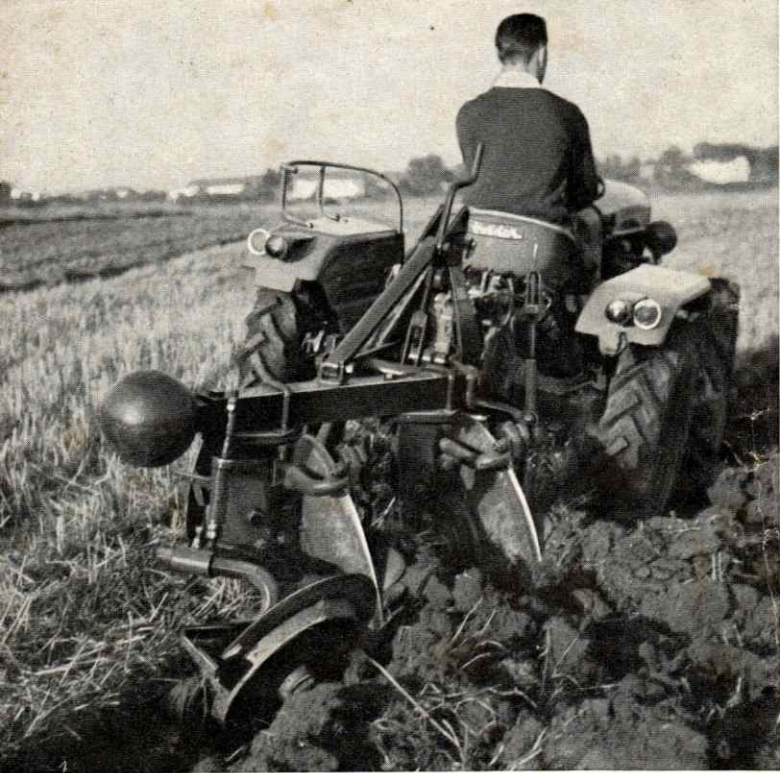
All armatures are clearly arranged and protected at the same time and enable you to overlook it with one single glance. Beside the usual standard equipment the A 20 tractor is fitted out as follows: blinking system, also arranged for two trailers, service hour meter and engine temperature gauge. It is a real pleasure to drive this powerful and manoeuvrable tractor. All operating levers are favourably arranged. The deep driver's seat rests on rubber buffers acting as springs and is adjustable to fit any person.



The A 20 tractor is equipped with 4 powerful epicyclic gearings which are allowing the usually high ground-clearance, at a favourable low centre of gravity. By the cross-section of the epicyclic gearing we want to give you an illustration of it. The robust 12-speed transmission allows proper gear selection under however difficult conditions the machine will be operated. 4 wheels are more powerful than two. This fact is proved by thousands of HOLDER special-purpose four-wheel drive tractors on the home market and in foreign countries. Unique performance even under the most difficult ground conditions is the main characteristic of the HOLDER A 20 with its real four-wheel drive.



A Holder can tackle any job!



A 20 with disc plough



A 20 with two-furrow reversible plough



A 20 performing difficult tractive work



A 20 log-dragging in the forest



A 20 with HOLDER p.t.o. sprayer