

INTRODUCING . . .

== Mercedes - Benz ==

WORLD'S OLDEST MOTOR
VEHICLE MANUFACTURERS

MERCEDES - BENZ

THE OLDEST MOTOR VEHICLE MANUFACTURERS IN THE WORLD

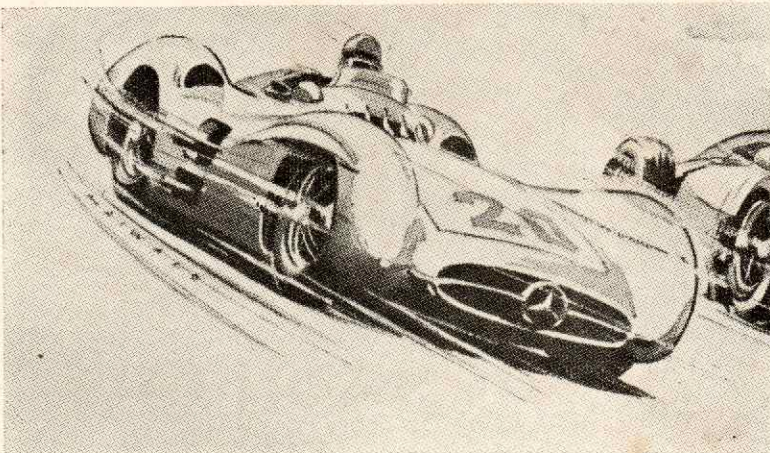
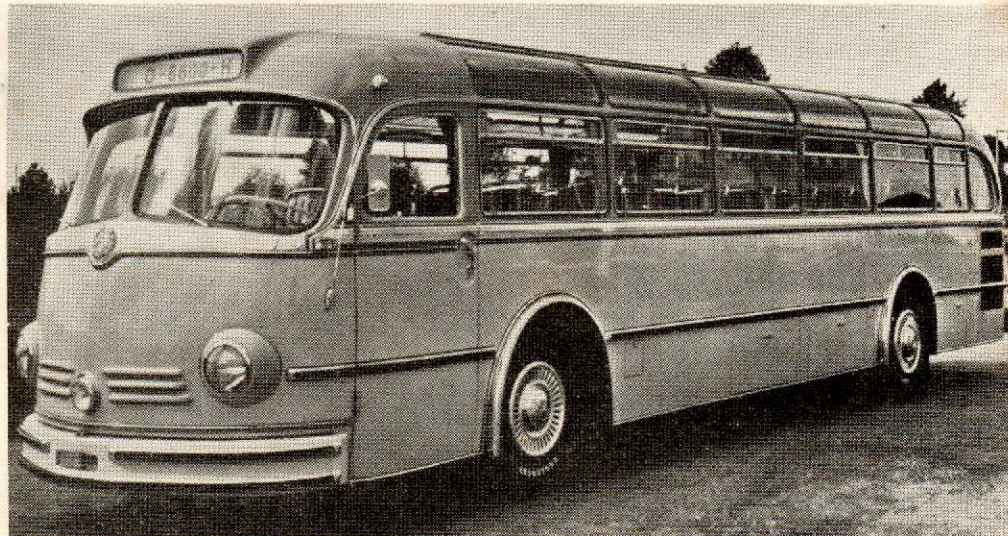


← THE FABULOUS 300 SL. PETROL INJECTION, 240 BHP AND SPEED UP TO 162 MPH. 1st AND 2nd IN THE TORRID CARRERA PANAMERICANA MEXICO.

↓ SUPERB REAR-ENGINE BUSES FROM 120 TO 155 BHP.

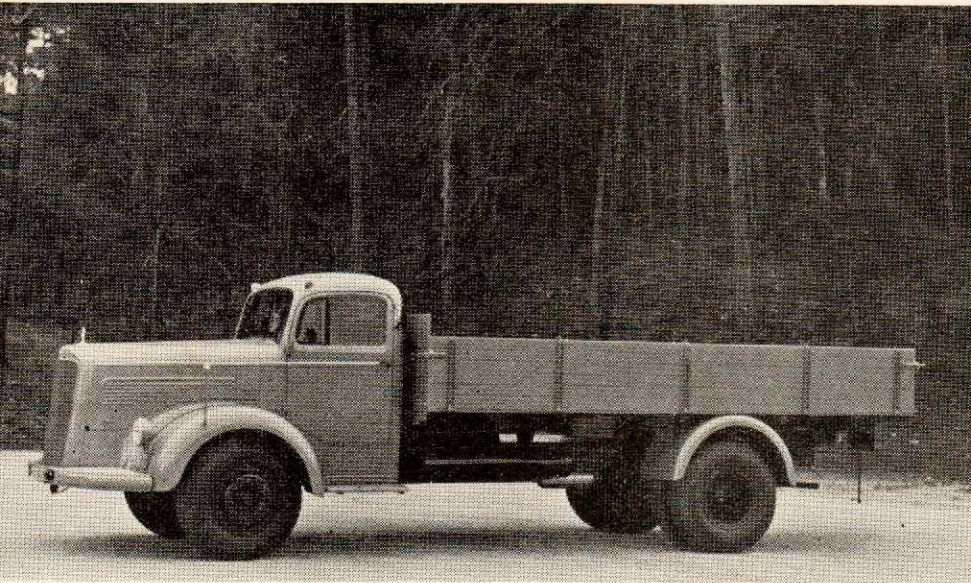
World Racing Champion for 1954. Mercedes-Benz is a name to conjure with. It represents the ultimate in automotive engineering.

The same painstaking care is applied to the production of your passenger car or diesel truck.



SALES AND

PALM BEACH



ALL TRUCKS ARE DESIGNED FOR—

articulated or detachable trailer use. The L315 is capable of hauling a gross weight of 55,000 lbs. up a gradient of 1 in 5. With powerful compressed air brakes it CAN stop effectively. The cabs are comfortable with central heating and are well insulated from the motor which is remarkably quiet on its rubber mountings. Prices of the light, medium and heavy models are fully competitive.

◀ 135 H.P. — £3,750 est.

Many truck operators know full well they are using and consequently abusing trucks that were never designed for the heavy work they are being given. Time off the road for repairs and heavy parts costs are suffered simply because the initial cost of an inferior machine is less. If they only knew it, these firms pay, over a period of time, the price of a job rated Mercedes diesel but never enjoy the benefit of owning one. Mercedes models may also be ordered with 4x4 drive for off the highway use.

N.Z. LUMBER CO. LTD. SAYS . . .

"Transport and Mercedes-Benz are synonymous. These high quality vehicles are famous overseas and represent the finest achievement in vehicle design and assembly."

Lumber company orders were based purely on the vehicle's specifications. Greater comfort, power and ease of accessibility were incorporated than in any other diesel available.

Mercedes-Benz units will, no doubt, become a familiar sight in the N.Z. haulage field. These vehicles will be put together with great care in our new assembly workshops at Mount Maunganui.

ASSEMBLY WORKS

MOTORS LTD. PHONE 638
PORT OF MT. MAUNGANUI

E. F. NATTRASS & CO. LTD.

Reprinted from N.Z. TIMBER JOURNAL, July, 1955