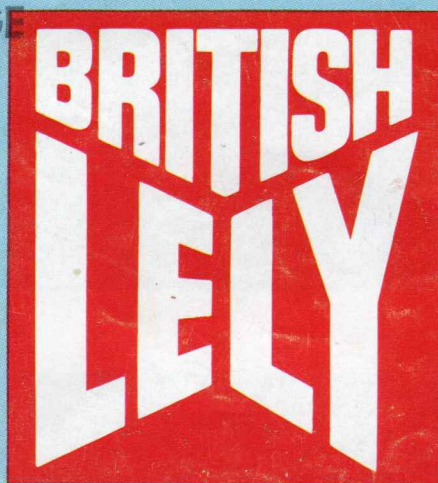


SOLE CONCESSIONAIRES FOR N.Z.
LEAMINGTON CAMBRIDGE
UNITED TRACTORS LTD.
PHONE 5770

SOUTH ISLAND DEPOT
UNITED TRACTORS LTD.
726 MAIN SOUTH RD.
CHRISTCHURCH
PHONE 499-935



FLYING PHEASANT





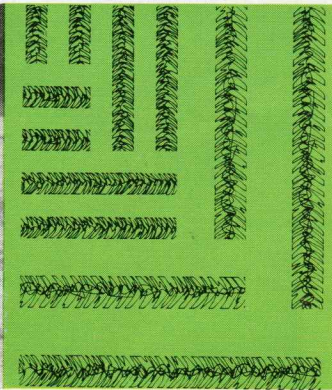
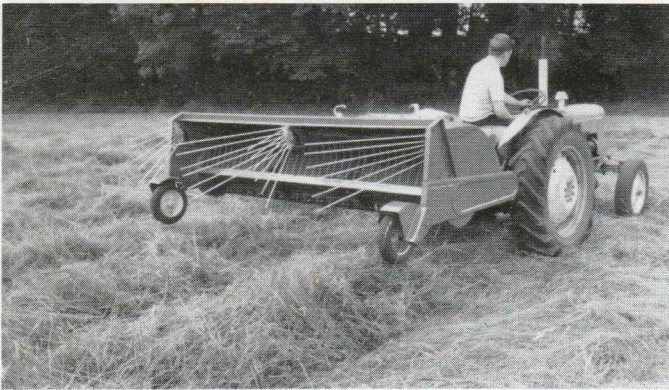
HAYRIDGING, FRESH CUT CROP

Ted your freshly mown crop with the Flying Pheasant fitted with the quivering hayridger tines and leave it really fluffy for quickest drying by sun and wind. The Flying Pheasant takes two 5ft. rows, picks them up cleanly and leaves them in two fluffy swaths behind. The hovering hayridges produced can then be gently re-tedded as necessary, saving the valuable leaf and drying the stem at record speed.



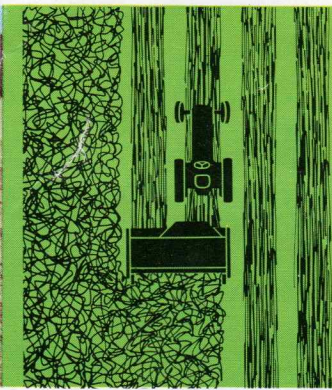
HAYRIDGING SPREAD CROP

For maximum exposure to the sun the crop can be spread out evenly all over the ground. For maximum spread the hayridger tines are removed in seconds without tools. After this the crop can easily be ridged by the Flying Pheasant when the Hayridger tines have been refitted—again a simple job calling for no tools. Again fluffy swaths are left set high for the wind to blow through and allowing the ground to dry between the rows.



LIFTED AT HEADLANDS

At the end of each double row, you can quickly lift the machine clear of the crop with a movement of the tractor hydraulic lever. This invaluable feature means that you do not interfere with already ridged or windrowed crop at the corners. With a trailed machine the neat rows are spoilt as the tractor makes it's loop turn. With the Flying Pheasant lifted clear of the crop the swaths are left neat and waste is avoided. When windrowing full length rows are left for the baler right into the corners. You can turn easily and quickly either back up or loop, which helps a lot when opening up a field.

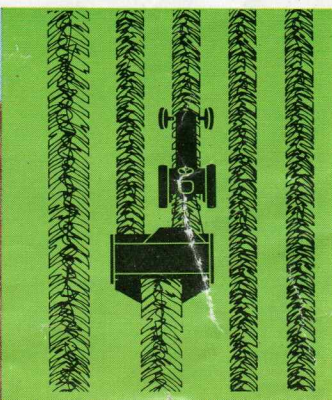


SPREADING ALL OVER

When there is plenty of sunshine but little breeze the crop can be spread as evenly as possible all over the available ground. The Flying Pheasant does this to perfection with the hayridging tines removed. Remove the hayridger tines without tools and it will pick-up two swaths and spread them evenly over the full width of the machine making a fluffy carpet that uses all the sun. If a shower looks likely or there is going to be a heavy dew just refit the hayridger tines and hayridge the spread crop as shown in the second picture above.

WINDROWING

When your crop is fit for baling simply mount the aerodynamically designed windrowing doors and you can put two rows into a windrow ready to be picked up by the baler. The doors can be slid into position by one man and are firmly secured by linch pins. No tools are needed. Windrowing with the Flying Pheasant gives the perfect fluffy windrow moving all the crop as the row is made thus allowing further drying to take place immediately in front of the baler. The fluffy windrow is ideal for faster feeding into the baler than is possible by other systems of rowing up and what is more the windrow can easily be spread again if necessary. Patented flexible rotor tines follow the ground closely and, with the airflow action of the three faced rotor, ensures a really clean sweep of the crop. The Flying Pheasant is on every basis the only machine between the mower and the baler.



SWATH TURNING RIGHT TO LEFT

By removing both the left hand hayridger tines and fitting the right-hand tines into alternative sockets your Flying Pheasant becomes a swath turner, no tools are needed for this change. This exclusive swath turning setting is revolutionary on a tedder of any type. This feature means that you can turn the crop in mid air so that wet crop previously under the swath is brought to the top, where it should be, for maximum exposure and really fast drying. At the same time you lift the hovering swath and move it onto dry ground between the previous rows.



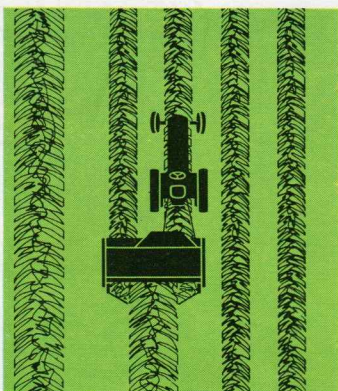
SWATH TURNING LEFT TO RIGHT

With the Flying Pheasant as well as being able to swath turn right to left you can swath turn left to right. This means that you can alternate the direction of your swath turning moving it more than once onto dry ground without moving the crop too far to the outside of the field. In catchy weather this feature is of great advantage as bringing the damp crop up from the bottom of the swath and placing it on ground which has had the chance to dry out is the quickest way to speed the drying of your hay.



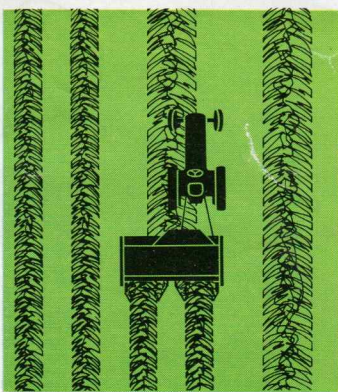
NIGHT SWATHING

In the evening, by simply fitting two of the hayridger tine assemblies into the outside angle turn positions you can lift your crop into a single night swath. This action reduces the amount of crop exposed to the weather and protects from dampness formed by dew or overnight rain. It also leaves a wide area of ground to dry out quickly in the morning ready to receive the re-spread crop.



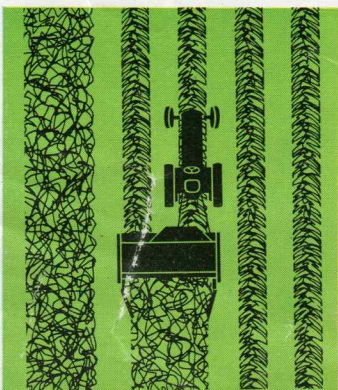
SPLITTING A NIGHT SWATH

After the dew has gone from the ground, simply drive the Flying Pheasant over the centre of the night swath with all four hayridging tines fixed and you can very easily split the crop into two light fluffy rows for early drying during the day. This possibility is a great help in achieving high quality hay in the shortest possible time.



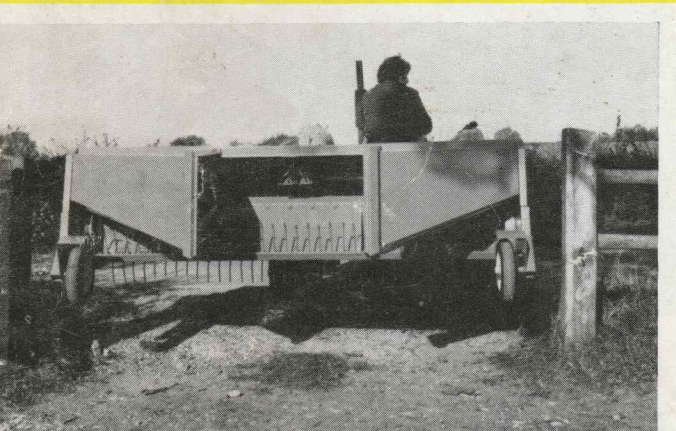
SPREADING IN DOUBLE ROWS

If you require, it is possible to take two fluffy swaths and combine these into one wide even carpet but still leaving a space between the double rows. Simply fit two sets of hayridging tines into the outside positions and the crop is left spread but stood up so that both wind and sun can easily get to it. Afterwards, it can easily be split back into two rows by running down the centre with all four hayridging tines fitted or alternately it can be windrowed with the windrowing doors if ready for baling.





The Flying Pheasant making a perfect windrow



Through the gate or along the road

BRITISH LELY

Flying Pheasant

THERE IS NO OTHER HAYMAKING MACHINE

that can cover two 5ft. swaths, hayridge cut crop, hayridge spread crop, make fluffy windrows, swath turn to right, swath turn to left, make night swaths, split night swaths, lift at corners, is easy to hitch and to transport. It is fully offset mounted, P.T.O. driven and is suitable for any category 1 or 2 Tractor.

What more could you ask for. The Flying Pheasant will do every haymaking operation possible by any other machine, quickly, simply and efficiently—PLUS some new operations invaluable to making your hay. No Matter how you want your crop, spread all over the ground, left in high fluffy swaths, swath turned, windrowed or in any of the other positions described inside, the Flying Pheasant can do it. Adjustment for any of these operations is simplicity itself. Simply unclip the hayridger tines and clip them back in whatever position and in whatever combination is required to do exactly what you want—no matter what the weather conditions are.

There is no need to buy a rake as well—simply fit in one minute the windrowing doors and deflectors and you can move the crop into a tight windrow ideal for any baler. Long or short, heavy or light, the Flying Pheasant will handle all these crops, sweeping them cleanly from the ground and leaving them tidily as required. Since it is mounted on the three point linkage it lifts quickly and easily at the end of each row so that you don't make a mess of previously formed swaths or windrows—you can lift and back,—lift and turn—or lift and loop. With its floating hitch the Flying Pheasant hugs the ground even on the most undulating fields and cuts losses to an all time low. When in work the Flying Pheasant runs on two pneumatically tyred wheels mounted on taper roller bearings making for really accurate ground following. Height is set in seconds by adjusting the length of the top link or hydraulic control stop.

For transport no adjustments are necessary. All you have to do is lift the Flying Pheasant on the tractor hydraulics and it will pass easily through any 10ft. gate or along narrow roads. (For long journeys on busy roads an extra hitch point is built in so that you can, if you wish, move the machine so that it is centrally disposed to the tractor—although this position need not normally be used.)

Extremely easy to use, the machine lifts off the ground at the end of the rows in a quick positive action. A quick tight turn, lower the lift arms and straight into the next pair of rows for fastest haymaking ever with no untidy corners.

The machine is bang up to date and at the same time ruggedly constructed to withstand hard use at all times. The tedding action is given by special patented trailing tines mounted on a solid three-sided drum which gives a full fan effect to give draft assisted pick-up which means extra clean sweeping and even fluffier crops. These trailed rotor tines follow the ground minutely to ensure the cleanest pick-up and at the same time are very gentle in their action to give you all your hay in the bale. Drive to the ball bearing mounted rotor is by a sturdy chain—No belt slip in heavy conditions—which in turn is driven from the P.T.O. through a robust silent oil bath bevel gearbox which is completely trouble free and has an extra long working life—ball bearings and high quality machine cut gears see to that.

When not in work the Flying Pheasant stands firmly on its own built in rustproof quick-drop jack ready for easy mounting.

If you are looking for a really first class haymaker which is the only machine that you will require between the mower and the baler to make first class quality hay—you need look no further than the LELY FLYING PHEASANT since this is the only single machine that is capable of carrying out all these operations. It is an absolute must for anyone who wants to make top quality hay. Ask anyone who has used one they will confirm there is nothing to touch it.

COVERED BY LELY PATENTS ALL OVER THE WORLD

BRITISH LELY LIMITED

WOOTTON BASSETT - WILTSHIRE - ENGLAND

Printed in England

Tel. Wootton Bassett 2101

Telex 44320

Grams Britlely Wootton Bassett

All Goods sold subject to conditions of sale printed on back of price list