



INTERNATIONAL® 826 DIESEL TRACTOR



NEW POWER 90-PLUS PTO

826 Diesel Gear Drive Tractor. Here's a powerful new 358 cu. in. diesel engine on a chassis that weighs hundreds of pounds more than most tractors in this class. Here's easy shifting, easy power steering and smooth power disc brakes. The seat adjusts six ways for your comfort. Standard transmission provides 8F-4R speeds. And with Torque Amplifier you get twice the number of speeds plus ability to shift on-the-go. There's a full complement of the most wanted options, such as new comfortable cab, safety frame and canopy, new differential lock, auxiliary fuel tank, torsion bar draft control, optional axles, dual wheels and more.

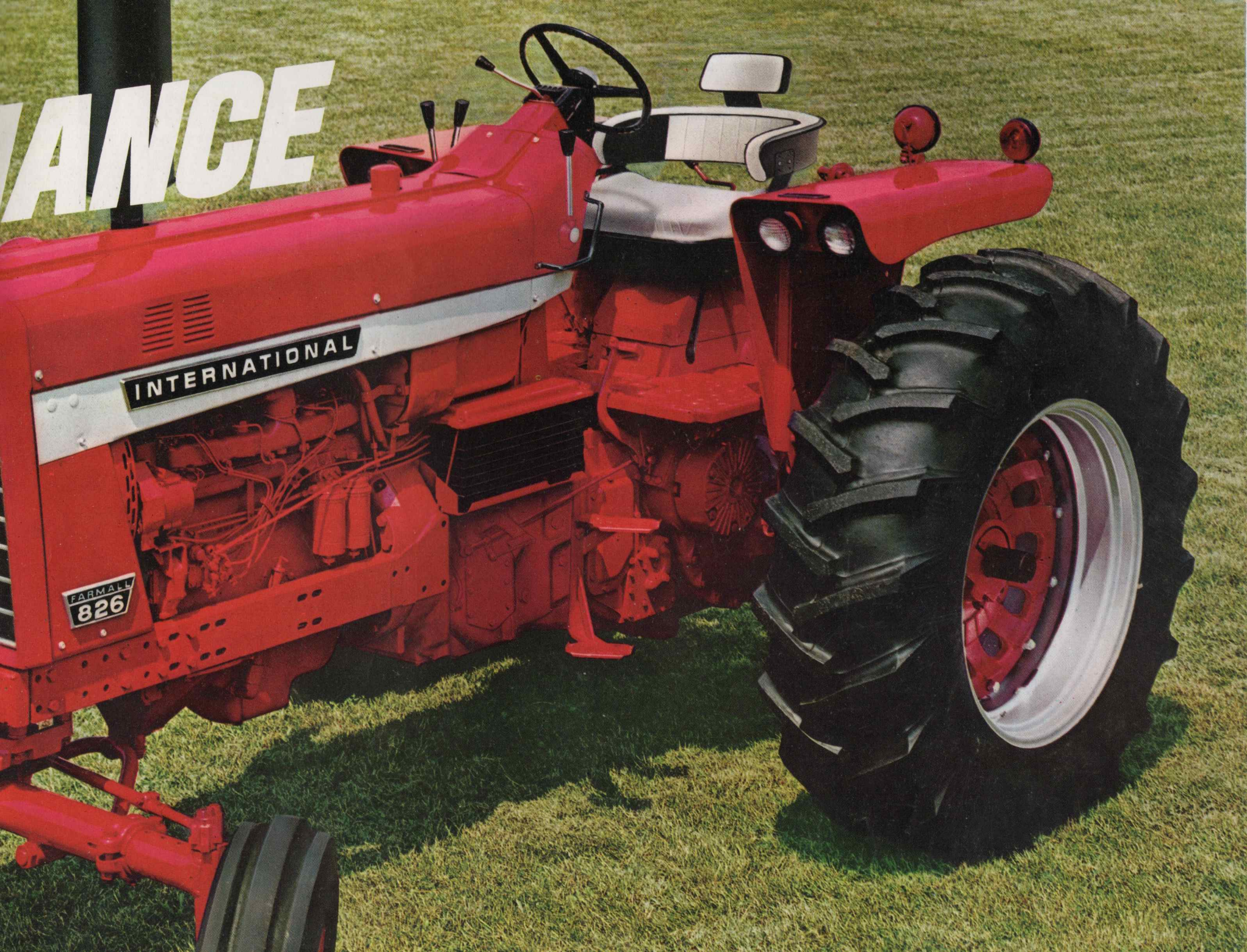
Result is the new 826 Diesel Gear Drive—with more built-in weight ...an excellent power-to-weight ratio...more of the features important to comfort, high production and low operating cost. Compare anywhere. You'll see, the modern new 826 Diesel Gear Drive is more tractor for your money.

NEW PERFORM

358 CU. INCH
DIESEL



ANCE



INTERNATIONAL

FARMALL
826

MORE TRACTOR per DOLLAR

with International® 826

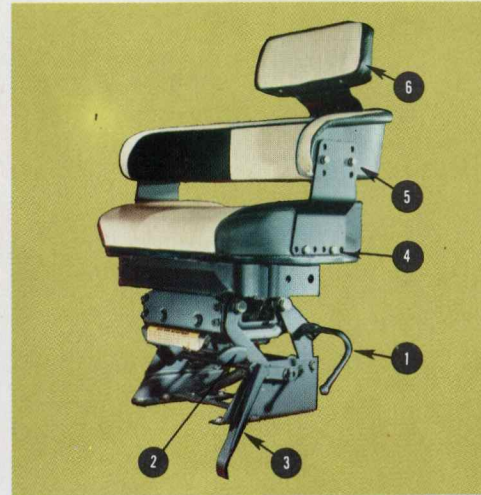
Set yourself in the seat of a new 826 tractor and get the feel of Real Drawbar Lugging Ability. Notice—as the drawbar load increases—how the engine goes to work. Even though the engine RPM may reduce, drawbar pull increases to help through the tough spots. This reduces shifting many times. *The 826 Tractor really hangs in there.* Then notice the quick engine recovery once through the tough spot. *Unmatched—Drawbar Lugging Ability.* This is true with all IH farm tractors.



Smooth "finger-tip" shifting lets you change gears with ease. "H" pattern provides neutral between HI and LO ranges. Standard eight forward speeds include two creepers, four speeds for high speed tillage and two for fast transport. Four reverse speeds. Shift levers are lighted for night work.



Exclusive Torque Amplifier (Optional) doubles the number of speeds to 16 forward, 8 reverse and lets you power shift on-the-go without clutching or moving the throttle. TA reduces speed 22% while increasing pull by up to 28% in each gear. Use it through tough spots...or to slow down for turns. Get heavy loads started then shift up. Keep PTO speed up while reducing ground speed...harvesting, shredding, etc. Use TA to get the speed you want. Work in TA all day—it's built to take it.

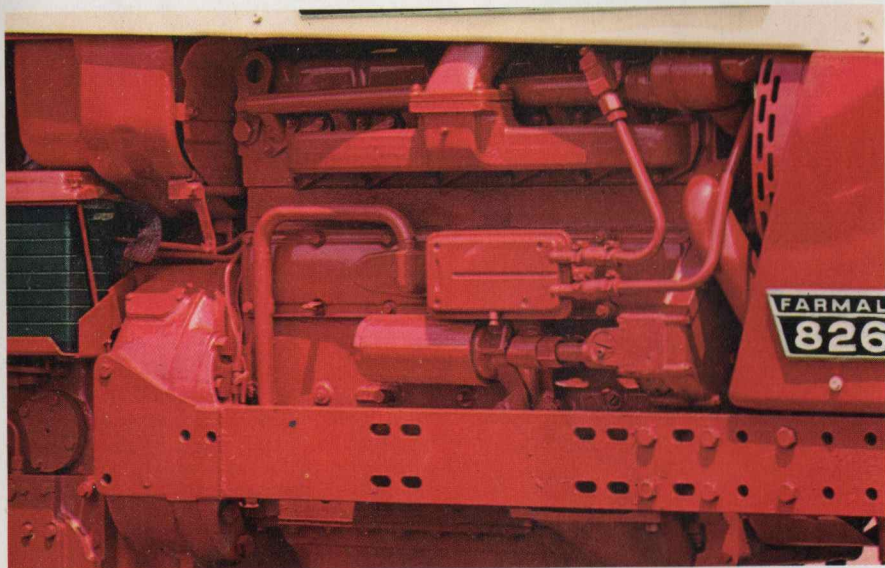


Six-way adjustable seat. This standard seat gives you more cushion, more comfort, more support where you want it plus exceptional provision for adjustment. (1) Adjust seat up and down for leg length. (2) Precise adjustment for operator's weight. (3) Press here with your heel and seat moves back for stand-up driving. (4) Adjust wrap-around fore and aft in relation to seat. (5) Adjust wrap-around up and down in relation to seat. (6) Backrest extension also adjusts up and down for comfort. Optional hydraulically adjustable seat also available.

- Adjustable wide front axle, Farmall model
- Powerful, new 358 cu. in. diesel engine
- Dual-stage, dry-type air cleaner
- New-design, extra-quiet muffler
- 8F, 4R speeds—easy shifting (16F, 8R with Torque Amplifier)
- Wide platform, mounting steps both sides
- Smooth, hydrostatic steering, standard. Five-position steering wheel is optional
- 8-inch diameter double disc power brakes
- Long-life 12-inch Dyna-Life clutch
- Enclosed torsion bar sensing draft control hitch
- Power shift IPTO (540/1000 RPM)
- New, two door, pressurized cab available
- Auxiliary fuel tank adds approximately 40 gallons to regular fuel capacity
- New optional differential lock that sends power equally to both drive wheels

Test the high-speed, hard-pull 826 Gear Drive Diesel—soon!

NEW **PRODUCTIVITY** for more **PROFIT**



Engine



Weight transfer attachment



Quick coupler



3-point hitch

This new 358 cu. in. diesel engine has a world of reserve power to speed through heavy schedules. Rated speed is 2400 RPM. And International multi-range design—the ability to deliver full rated power over a wide range of engine RPM—lets you shift up and throttle back for lighter loads. Seven main bearings. Counterbalanced crankshaft. Pressure lubrication to main and connecting rod bearings. Heavy-duty alternator. A rugged engine. Proved design for power and dependability.

3-point hitch offers quick hook-up and

highly accurate control of ground-working implements. IH hydraulic control maintains constant draft, automatically. Draft control is easy to set, requires little adjustment and provides accurate implement control. One lever sets load control, the other lever regulates raising and lowering equipment. Torsion bar lower link sensing responds instantly to load changes. IH hitch has automatic drop retarder to control rate of drop: Heavy implements lower at same rate of speed as light implements. Two leveling cranks and extendable lower links. Built-in diagonal float for wide implements—

Quick coupler attachment for 3-point hitch permits rapid easy switching of rear mounted 3-point equipment.

Automatic Weight Transfer brings draft control advantages to pull-type field work. Keeps tractor wheels from spinning. Provides more traction by transferring weight from implement and front of the tractor to rear tractor wheels. Works through hitch and tractor's draft control. Automatic—and only weight needed is transferred. Floats...disk harrows maintain constant depth. Reduces the number of wheel weights normally used.



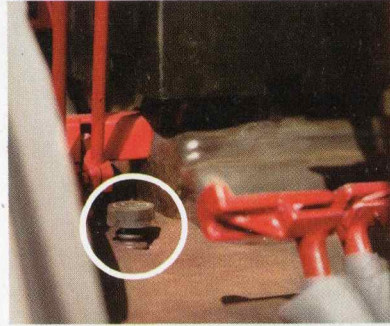
Position Comfort Steering. Locks at five different angles to put the wheel exactly where you want it. (Optional). **Hydrostatic Power Steering.** (Standard) It's all hydraulic, very smooth, easy and sure. Compare it to other hydrostatic or power assist steering. You'll like International 826 steering best.

Two-door, pressurized cab (optional). 58 inches wide. Has big wide steps and doors on both sides. Both doors lock . . . and can be secured in three different part-open positions for added ventilation. Wide windows all around — tinted to keep sun's heat out and reduce glare. Rear windows also open. Electric wiper for safer driving. Two inside rear view mirrors let you watch rear equipment and road traffic. Rubber mounting pads help reduce vibration and noise. Welded cab construction assures high strength for long cab life. Powerful 650 cu. ft. per minute pressurizer with 700 sq. in. filter provides fresh, filtered air while keeping the dust outside. Rear reflectors, turn indicators, fenders, dual headlights, built-in provision for lifting hooks for easy cab removal are standard. Heater extra.

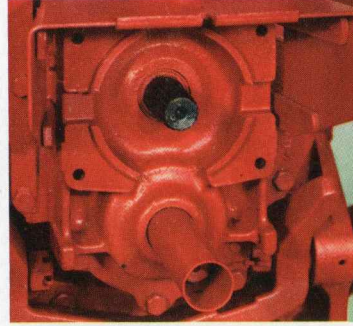




Dyna-Life® Clutch lasts much longer than bigger fibertype clutches. Dissipates heat quickly to reduce wear. 12-inch diameter. Dyna-Life clutch can save you the cost of one or more clutch jobs during the life of the tractor.



Differential lock (optional) gets you out of trouble before you get into it. Step on the pedal and power is directed equally to both drive wheels . . . prevents one wheel from slipping more than the other. Can mean the difference between a complete stall and work done.



Power shift IPTO features smooth control and choice of single 1000 RPM shaft or twin shaft 540 RPM and 1000 RPM unit (shown). PTO speeds obtained at 2,100 RPM. Shafts are positioned and sized to meet SAE specifications. (Optional)



Dual wheels. Duals bolt solidly to heavy cast hubs. 2-Piece hubs can be quickly bolted onto the axles. Quick on, quick off—and rugged. In addition to regular axles, 100" tread and 118" tread axle attachments are also available. With the 118" tread axle you run your duals close together for on-land plowing. Spread them apart to 60-inch and 120-inch tread and straddle 30-inch rows, or provide a wide track. Drop the outer wheels easily, at any time. An attachment for adjustable front axle provides 118 or 124 inch adjustments.

BEST BUY in the **90-plus hp class**



Protective frame and canopy provides added measure of safety plus protection from the sun. Lined with sound absorbing material. Seat belt included. (Optional)

Position Comfort Seat. The big difference is the way you feel at the end of the day. And this Position Comfort Seat has a lot to do with making the 826 easy-on-you. Fingertip control (1) lets you raise and lower seat hydraulically, one finger. Release catch (2) permits forward and backward movement for leg length. Ride Control (3) allows operator to select degree of "cushioning" that's just right for his weight. Under-seat adjustment (4) controls angle of seat. Thick, contoured, padded seat. Back is specially designed for firm low-back support. Padded arms. Tough, tested covering material resists sun and weather. Seamless so no water gets in. You can position yourself however you like with this seat . . . and change position anytime you're ready. (Optional)



SPECIFICATIONS

Horsepower:

Engine (gross, stripped).....	123
Engine (net, with fan, generator and air cleaner).....	96
PTO (Mfr. est. max.).....	91

Engine:

Number of cylinders.....	6
Speed, rated full load.....	2400
Governed speed range.....	900-2400
Bore and stroke, in.....	3.875x5.060
Piston displacement, cu. in.....	358

Ground speeds, MPH w/18.4-34 in. 6 ply (R1) tires*

RANGE	GEAR	GOV. RANGE 900-2400 RPM		ASAE PTO 2100 RPM	
		DIRECT	TA	DIRECT	TA
L	1	⅝- 1⅝	½- 1¼	1½	1¼
	2	⅞- 2¼	¾- 1¾	2	1⅝
O	3	1½- 4	1¼- 3	3½	2¾
	4	2 - 5¼	1½- 4⅝	4½	3⅝
H	1	2¼- 6	1¾- 4¾	5¼	4
	2	3 - 8	2¼- 6¾	7	5⅝
I	3	5¼- 13¾	4 - 10¾	12	9¼
	4	7 - 18¼	5¼- 14¾	16	12½
R	1	1 - 2⅝	¾- 2¼		
	2	1½- 4	1¼- 3		
E	3	2½- 6¾	2 - 5¼		
	4	3¼- 9	2½- 7		

*No allowance for slippage

Capacities:

Cooling system, qt.....	24
Fuel tank, gal.....	37
Engine, lube, qt.....	12
Transmission and diff., gal.....	22

INTERNATIONAL® FARMALL® 826 DIESEL GEAR DRIVE TRACTOR

Dimensions: With 18.4-34 in. rear and 9.5L-15 in. front tires. Turning radius 10.9 ft. (w/out brakes); wheelbase, 105 in.; length (overall, three-point hitch), 164 in.; height (over steering wheel), 83 in.; width (over std. rear axles), 92 in.

Regular Equipment: Adjustable wide front axle. Air cleaner service indicator. Alternator. Antifreeze (domestic only). Wet battery. Hydraulic full power brakes with dual pedal safety latch. Cigar lighter. Direct pressure lubrication (drive train and differential). Hydraulic draft control w/rockshaft and draft sensing. Vertically adjustable drawbar. Dry-type dual stage air filter. "Dyna-Life" clutch. Ether starting aid. Fuel tank capacity, 37 gallons. Hydraulic oil cooler. Hydraulic pumps—9 and 12 gpm. Hydrostatic power steering. One auxiliary valve with rear manifold. Instruments (glare-free lighting); Speedometer-tachometer: Gauges—engine temperature, electric fuel gauge. Alternator warning light and charge indicator; engine oil pressure warning light; transmission oil pressure warning light. Lights, shockproof, 2 front (adjustable) side-mounted with combination rear light (adjustable) includes 4-position switch and flashing rear light. Mounting steps, right and left sides. Vertical muffler. Parking lock. Seat, upholstered with padded backrest on positioning linkage and with vertically acting seat suspension. Tool box. Tires: front 9.5L-15 in., 6 ply (F2); rear 18.4-34 in., 6 ply (R1).

Attachments: Three-point hitch Category II with independent swinging drawbar. Quick coupler for 3-point hitch. Heavy-duty upper link assembly for three-point hitch.

Weight transfer for 3-point hitch. Two-point "Fast-Hitch" with independent swinging drawbar. Rockshaft arms. Cross-type drawbars for hitches. Swinging drawbar for vertically adjustable drawbar. Two-position, heavy-duty drawbar, including swinging drawbar in lieu of vertically adjustable drawbar. Differential lock. Dual rear wheels. Tricycle front axle or single front tire. All-wheel drive. Rear heavy-duty, wedge lock wheels. Two auxiliary hydraulic valves, 4-position, detented with hydraulic manifolds, with or without breakaway and with or without check valves: Adjustable front axle: 54 to 78 in., in lieu of 60 to 86 in. axle. Extension for 60 to 86 in. adjustable front axle provides 118 or 124-inch adjustment. 100-inch rear axle. Heavy-duty 114-inch rear axle (not for duals). 118-inch tread rear axle. Dry battery. Belt pulley. Cab—insulated—includes two side entrances, rear-view mirrors, turn indicators, windshield wiper, pressurizer, dome light, tinted glass, mounting steps on both sides; right-hand combination rear light and rear reflectors. Cab heater. Fenders, deluxe with four lights (in lieu of two front lights). Horn with panel button. Tilt steering wheel. Horn for use with tilt steering wheel. Powershift IPTO, 540 and 1000 rpm. or 1000 rpm. only. Protective frame and canopy. Socket, electric connector. Seat—upholstered, with padded backrest, hydraulic suspension, infinite height adjustment with finger control. Tool box, platform mounted. Torque amplifier, 16 speeds forward and 8 reverse—hydraulically operated (includes engine brake). Front and rear-wheel weights. Front-end weights. Auxiliary fuel tank.

Specifications subject to change without notice.

First to serve the farmer

As from September 1970, tractors illustrated in this literature are sold with Safety Frame.

INTERNATIONAL® FARM EQUIPMENT
INTERNATIONAL HARVESTER EXPORT COMPANY
CHICAGO, ILLINOIS, U. S. A.

\$10,500 Dual Wheel