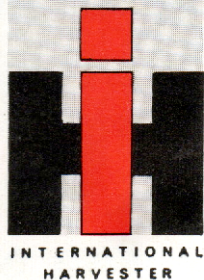
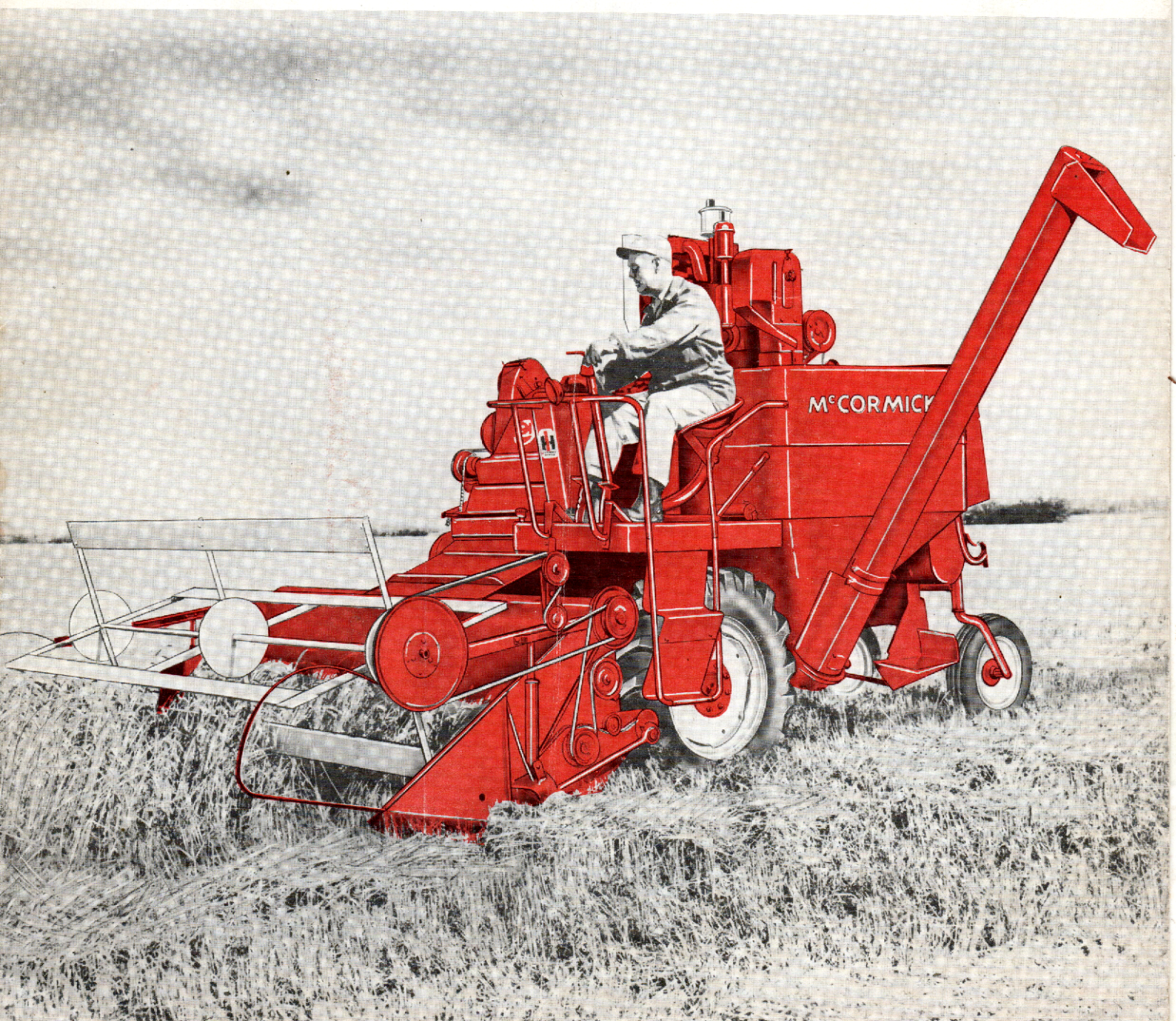


New Model 93 → \$5990.00



McCORMICK No. 91 Combine

8½ or 10 foot platforms... corn head available



McCORMICK No.

91

LOW COST
SELF-PROPELLED

COMBINE

outmaneuvers them all in every size field

- Get exclusive planetary steering
- Choice of 8½ or 10-foot platform
- Big 42-inch wide separator
- Windrow pickup
- Corn head available
- Bean special available

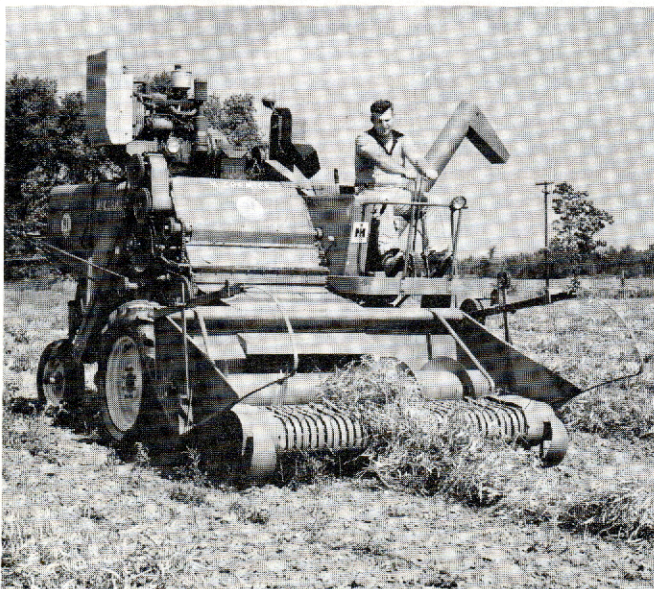
Harvest your crops with the most maneuverable combine ever built . . . the McCormick No. 91. This low-cost self-propelled knocks out the odd corners and small, irregular fields faster and cleaner than any combine you've ever handled. In big yields, an 8½ or 10-foot swath, backed by the No. 91's big separator capacity, covers the acres fast.

You steer with levers. Planetary drive lets you slow, stop, or reverse drive wheels individually or together. Make on-the-spot turns, one wheel reversed, the other going forward. Or pull both levers back for full reverse, without declutching or shifting gears. Rear wheels caster . . . and are adjustable for row crop widths. The No. 91 saves you grain

other combines miss . . . and you'll save time on the turns.

You get heavy-yield capacity to spare. Cut grain is spread in a thinner mat under the 42-inch wide cylinder for sure, clean threshing. Bar and wire concave starts famous 3-point separation instantly . . . you separate over 90% of the grain there. Exclusive McCormick opposed-action chaffer and shoe put more and cleaner grain into the tank.

The No. 91's low cost makes it practical even on farms that formerly could not afford a self-propelled. Amazing maneuverability makes it the unexcelled champion where fields are irregular or small.



A bean special model is available. Special sieves assure clean beans . . . gentle threshing action prevents cracking. A special slip clutch on the feeder prevents damage to the cylinder from stones. Husky windrow pickup handles every crop with ease. Regular models also can be converted for bean harvesting.

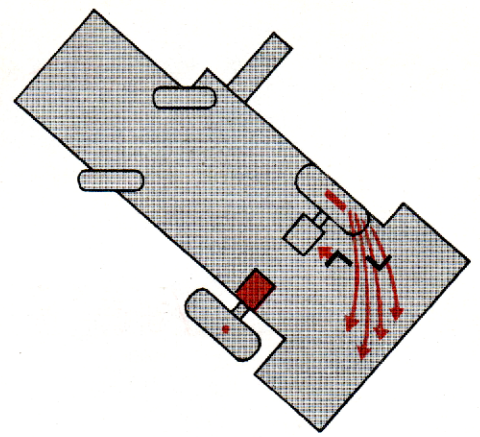


Husky No. 91 handles a rugged, big capacity corn head with ease. Ears are delivered parallel to cylinder for cleanest shelling. Extra wide feed openings swallow heavy yields fast. Adjustable tread rear wheels are available for row crop harvesting.



Exclusive Planetary Steering

Magic circle planetary steering offers unbound maneuvering to get at your crop. The farther back you pull on the left or right steering lever, the tighter the turn in that direction. Sketches show relationship of steering levers to planetary-drive units and drive wheels for turning and reversing the combine.



Gradual turns of any degree by moving the steering lever until desired turn is made.

Most maneuverable combine ever built . . .

- The No. 91 turns quicker and in less space than any other combine
- You reverse it instantly . . . no declutching or shifting gears
- You get power steering advantages "built in" at no extra cost

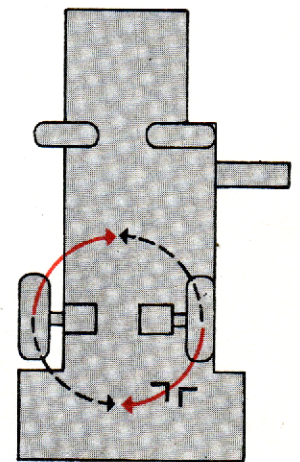
No combine, regardless of size, can harvest the odd corners and small patches as fast as your No. 91. And in the big fields, planetary steering saves time and grain at every turn.

You get all the advantages of power steering . . . plus maneuverability that is unmatched by any other combine. Engine power does the work . . . you control power flow to each wheel independently. Whether the ground is smooth or rough . . . whether footing is firm or muddy, you steer with the

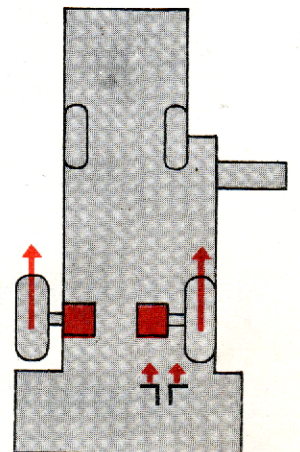
same unsurpassed ease. Controls are so precise, so easy to use that this combine almost seems to respond without effort on your part.

Ideal for every size field. It can move in and out of cramped areas, make almost impossible turns, and maneuver about in wedge-shaped corners and irregular-shaped fields. You can get at every bit of your crop and do it remarkably faster in those tight, hard-to-get-at places.

You can get the No. 91 with a windrow pick-up and it's so easy to stay right on the swath. Planetary steering lets you make turns that are impossible with other combines . . . you'll cover the acres faster . . . save grain others miss.



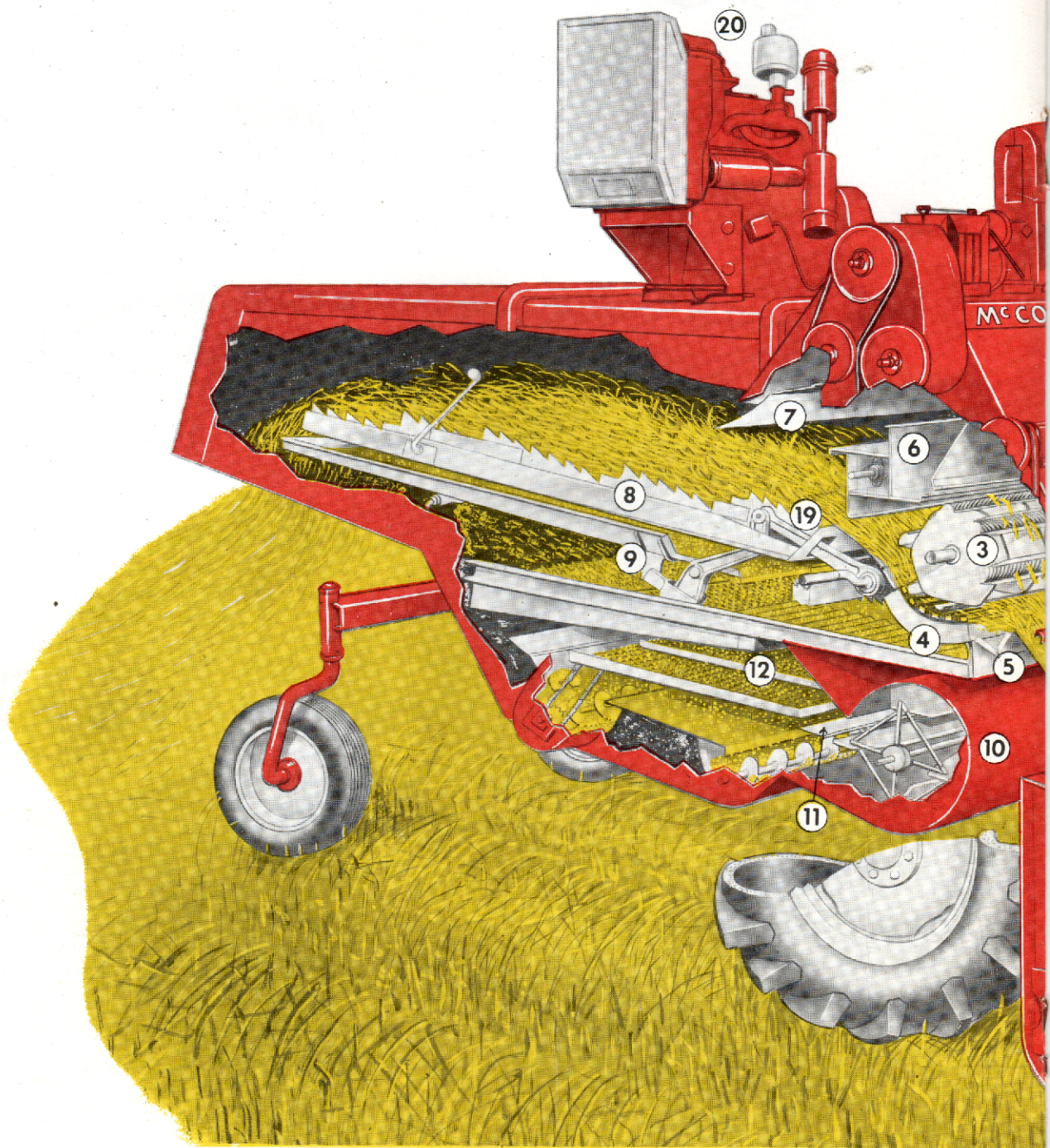
Right-angle turns or complete circling by moving steering lever until drive wheel stops, or until drive wheel reverses.



Full reverse is easy . . . merely move both steering levers back as far as they'll go.



McCORMICK



1 Retractable Twin Finger Auger feeds grain evenly to feeder chain.

2 Adjustable Chain Undershot Feeder.

3 Rasp Bar Cylinder is 15¼ inches in diameter and 42 inches wide with chain drive and adjustable speeds from 475 to 1600 rpm.

4 Bar and Wire Grate up to 90% of grain is separated the instant it is threshed.

5 Stone Retarder is standard equipment.

6 Cylinder Beater is box type, width 42 inches and diameter 14 inches.

7 Adjustable Check Flap, can be raised and lowered to control flow of material.

8 Straw Rack is single section with big capacity.

9 Return Pan is full width and length.

10 Cleaning Fan has plenty of capacity plus adjustable air control.

No. 91 COMBINE



Just Look Inside
... You'll See
20 Reasons
For The
Outstanding
No. 91 Combine
Performance

- 11 Wind Board is adjustable.
- 12 Opposed Action Cleaning Sieves have adjustable chaffers and shoe sieves.
- 13 Cylinder Adjustments are easy to make. It takes only a couple of minutes to set clearance of cylinder to concave.
- 14 Hydraulic Platform Control is standard equipment and raises platform from ground level to 33 inches. Hydraulic reel attachment, when ordered, is also controlled from same lever.
- 15 Most Versatile Control. The No. 91 can be slowed, almost stopped, turned gradually or sharply, pivoted completely, or reversed, by merely moving these steering levers back and forth.
- 16 Tailings Return Door close to operator for ready observation.
- 17 Top Inspection Door enables operator to easily check flow of material.
- 18 Unloading Auger is of large diameter for fast emptying of tank in a minute.
- 19 Steel Pitman has sealed ball-bearings.
- 20 I H 42 H.P. Engine is located out of dust and dirt yet easy to service.

Get exclusive opposed-action cleaning . . .

- Big 19½-square foot cleaning area assures capacity to spare
- Opposed action in movement of chaffer and cleaning shoe resists plugging and straw bridging
- Big, fully adjustable cleaning fan gives the air volume to meet your requirements

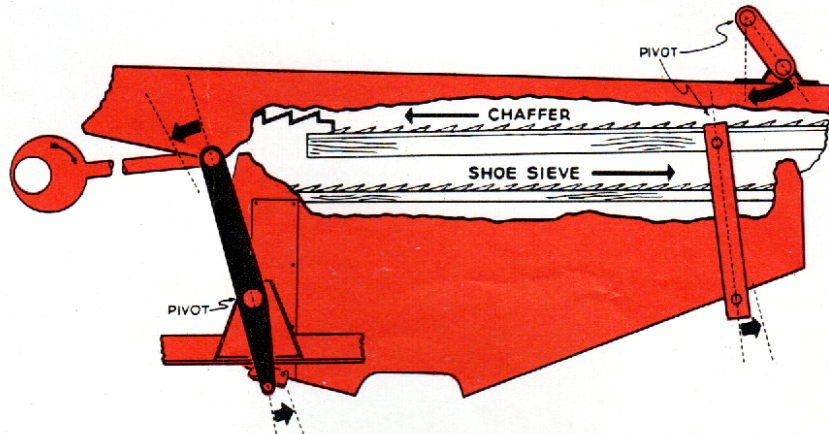
Take a look . . . see why opposed-action cleaning, a McCormick exclusive, is one of the features most wanted by experienced combine men.

Grain pan and chaffer are one rugged unit. Fingers at the back of the pan float coarse material well back, before dropping it on the chaffer. Clean threshed grain and small bits of chaff drop at the front of the sieve, where the wind blast has maximum cleaning

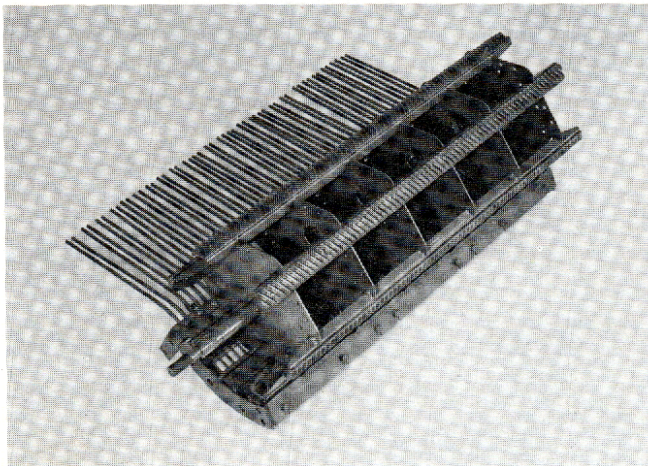
effect. Grain pan deflectors and deep dividers on the chaffer sieve keep grain distributed for best cleaning, and add efficiency on hillsides. The adjustable chaffer extension can be angled to suit crop needs.

The big fan is provided with a variable speed sheave, an adjustable air intake, and air blast deflectors to give you complete control of cleaning air.

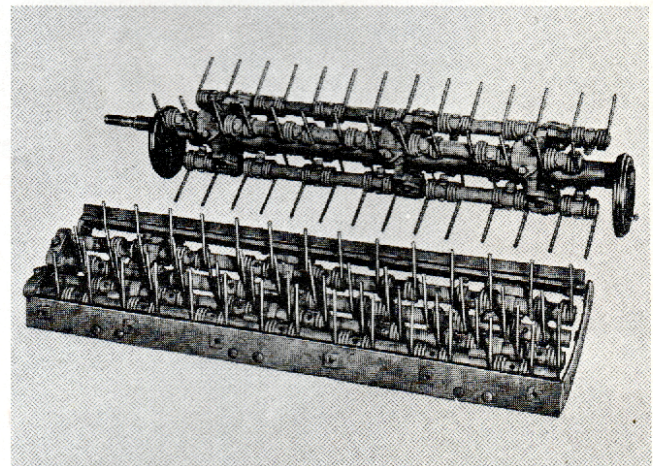
Opposed-action cleaning puts more and cleaner grain in the tank for you. Because the shoe is driven by rocker arm from the chaffer, sieves always move in opposite directions. Straw cannot bridge between sieves to cut wind and cause chaff blanketing. Counterbalancing effect of opposed action give smooth vibration-free operation that adds operator comfort and machine life.



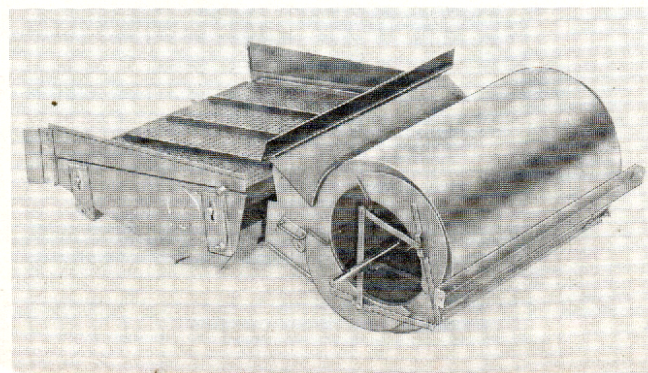
Save More Grain With Big Threshing Capacity



Big, chain driven rasp bar cylinder teams with bar and wire grate concave to give you cleanest threshing of the widest range of crops. Interchanging sprockets give you speeds from 475 to 1,600 rpm. Big 42-inch width lets even heaviest crops be spread thin for clean threshing.



Special spring tooth cylinder and concave are available for edible beans and other crops in pods. Spring steel fingers rake through the crop, breaking the pods and releasing the beans. A bean special model is available or parts are available to convert a standard No. 91 for edible bean harvesting.



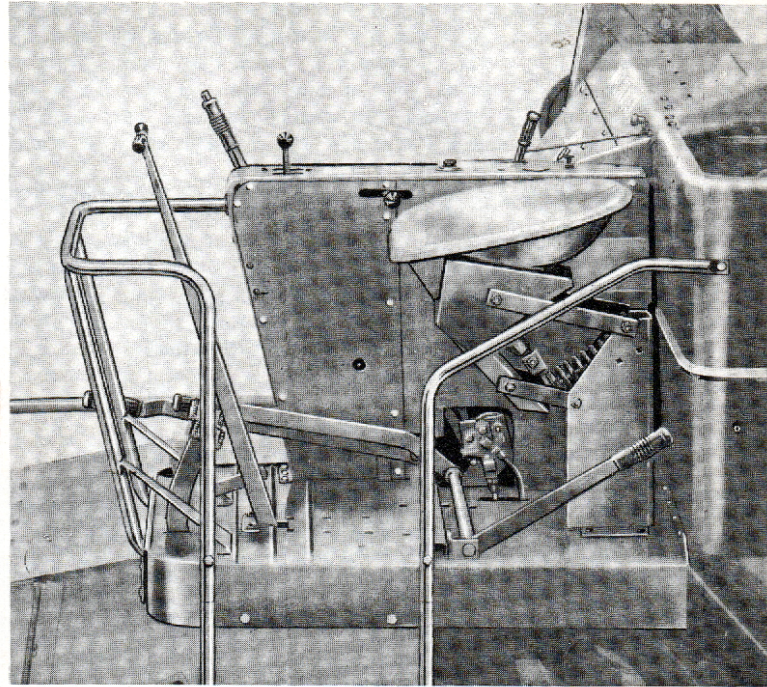
Big-capacity cleaning unit gives you 19½ square feet of cleaning area . . . plus full control of wind blast to do a real cleaning job. Chaffer, chaffer extension, and shoe sieves are all adjustable. Special perforated sieves can be added for unusual crop conditions. Cleaning air volume is fully controlled by variable speed fan drive and by shutter-type air intake opening. Blast deflectors let you direct air for best cleaning effect of every crop. Deep dividers keep grain distributed evenly on hillsides.

Easy, precise on-the-go control

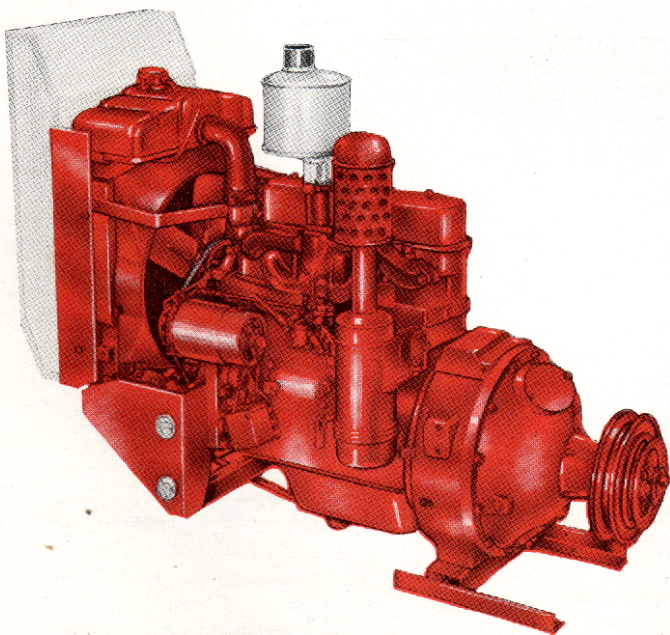
- Controls placed for easiest use
- Built to give you quick, accurate response

Here are controls so precise in response . . . so easy to use, that the No. 91 almost seems to respond to your wishes. Levers are placed within easy reach to engage power or increase speed, push levers ahead. To cut power, reduce speed, or stop, pull back on the levers.

On the console at your right hand are engine controls, variable speed lever, gear shift, and platform lift lever. Steering levers are squarely in front of the seat. Make quick, safe stops with foot-operated brake and clutch.



Rugged, valve-in-head IH engine



- Close-governed for steady speed
- Top-mounted for longest life . . . easiest servicing

This engine will hold cylinder speed to less than 5% variation, from fast idle to full power output. It gives you IH valve-in-head design, built to turn out full power . . . hour after hour and season after season. Big 135 cubic inch displacement assures full 42 horsepower output at a modest 2,100 rpm. High altitude pistons (special) are available to maintain engine horsepower in high altitudes.

The engine is top-mounted, out of ground dust and chaff . . . you get best cooling and longest life. Because it is away from straw and crop, fire hazards are reduced. And it's out in the open, exceptionally easy to get at and service.

SPECIFICATIONS

compare before you buy

Here are the facts and figures on the No. 91. Compare . . . see how much more it gives you in size and weight. Then remember the design features that give it more capacity per square inch of sepa-

rating and cleaning area. Remember the advantages of planetary steering. You'll agree that no other small self-propelled comes close to the McCormick No. 91 for value.

WIDTH OF CUT 10 ft. and 8½ ft.
LENGTH OF CUTTER BAR 9½ ft. and 8 ft.
PLATFORM CONTROL (cutting height) Hydraulic
CUTTING RANGE 2 in.
below ground level, at drive wheels, up to 33 in. above
REEL (44-in. dia., 4-bat, power driven)
Speeds 23-28, 28-35 rpm
PLATFORM AUGER (18-in. dia.) Retractable finger
FEEDER 40 in. wide, undershot slatted conveyor
SEPARATOR WIDTH (Inside side sheets) 42 in.
CYLINDER 6 rasp bars, 42 in. wide,
15¼-in. dia.; clearance adjustments made by raising cylinder;
Std. speeds 1120-1600 rpm, Sp. speeds 475-1600 rpm
CONCAVE (Bar and wire grate) 460 sq. in.
CYLINDER BEATER (4-wing, box-type) 14-in. dia.
STRAW RACK (Unit-type, 7-section) 41 x 71½ in.
CLEANING FAN (20-in., variable-speed) 572-700 rpm
CHAFFER (Adjustable) 31 9/16 x 37¾ in.
CHAFFER EXTENSION (Wire finger) 11 x 37¾ in.

SHOE SIEVE (Adjustable) 31 9/16 x 37¾ in.
TOTAL SEPARATING AREA 3,822 sq. in.
TOTAL CLEANING AREA 2,800 sq. in.
GRAIN TANK CAPACITY 32 bu.
MAIN WHEELS (Tread 80-in.) Tire size, std. 10 24, 4-ply; special, 11 24,
6-ply, or 13 24, 6-ply (83 inches)
REAR WHEELS (Std. tread 48 in., Optional 80 in.) Tire size, std. 5.90 15 in.,
Special 6.70 15 in.
LENGTH OF MACHINE 20 ft., approx.
WIDTH (Operating position) 15 ft.
(Transport position) 10½ ft.
EXTREME HEIGHT (operating or storage) 9 ft., 10 in.
MAXIMUM WEIGHT (w/10 24 tires) 5,750 lb., approx.
ENGINE (IH, 4-cyl., valve-in head) 42 hp.
Governed speed, 2,100 rpm. Displacement 335 cu. in.
FUEL TANK 12½ Imp. gal.
TRANSMISSION 2-speed, w/variable-speed V-belt drive
Speeds forward (10-in. tires, engine at 2100 rpm)
Low from 1.01 to 3.37 mph; High from 2.64 to 8.96 mph.
Low reverse .55 to 1.83 mph; High rev. 1.43 to 4.85 mph.

Special Attachments include hydraulic reel lift . . .

Now! Hydraulic "on-the-go" control of reel height helps save grain others lose in uneven stands and lodged crops. This is just one of many special attachments that make operation of the No. 91 faster and easier . . . adapt it to meet almost every crop need and field condition. Also available are the following:

Big-capacity 2-row corn unit offers choice of fluted rolls and stripper plates or famous McCormick spiraled and lugged snapping rolls.

10 ft. Offset platform for operating efficiently and quickly in row crops.

Platform attachments: including windrow pick-up, pick-

up reel, reel end guards, auger flight extensions and platform bottom shield.

Threshing attachments: including special spring-tooth cylinder for extra-gentle threshing action and special drum type cylinder for use in heavy corn crop areas. Slow-speed cylinder drive sprockets give a cylinder speed range from 250 to 1600.

Separating and cleaning attachments: including deep dividers for chaffer to maintain efficient cleaning on hill-sides; and Scour-Kleen attachment to remove weed seed and dirt from harvested grain.

Straw spreader or straw chopper can be added to make tillage easier and speed decay of organic material.

Let us demonstrate the maneuverable No. 91 combine to you to-day

Specifications subject to change without notice.

INTERNATIONAL HARVESTER COMPANY
OF CANADA, LIMITED

HAMILTON

ONTARIO