

L 531. L 541. New Wheel Loaders With A Big Difference.



LIEBHERR

The better machine.

Liebherr's new wheel loaders set new standards in the wheel loader industry.

With their technologically advanced drive systems, the new loaders meet even the toughest demands of the everyday work world.

The sum of all the technological innovations on the new loaders means more output, greater efficiency, better operator comfort and longer life expectancy. It also means noise and fuel emissions that are more in tune with the environment - an important consideration in today's work world.

The newly developed Power-Balance-System on the loaders ensures that optimum smooth, stepless and continuous output is directed where it is most needed - from 0% to 100%. This produces maximum efficiency in all situations, including better fuel efficiency, a standard consistently set by Liebherr in all its machines.



**An Exciting New Standard In Wheel Loaders
From Liebherr.**

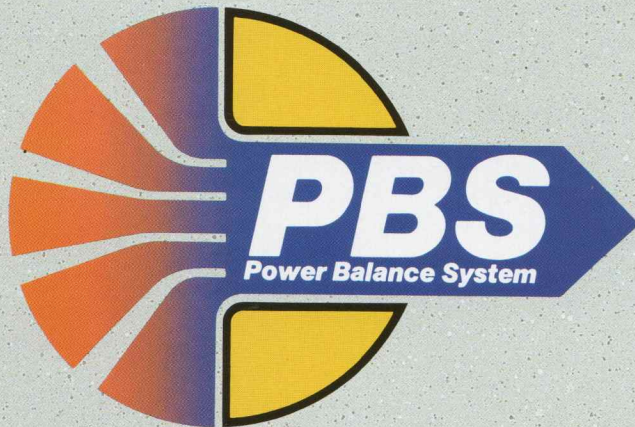


Wheel Loader Technology –

The travel drive on the wheel loader is the deciding factor in just how efficient the machine will be.

The advantages of this drive system, available only from Liebherr, are: optimum utilization of available horsepower by means of a horsepower limiter and the Power-Balance-System; hydrostatic travel drive which provides automatic gear shifting according to the manually pre-selected speed range; and wear-resistant braking through the hydrostatic travel drive system and wet-type multi-disc brakes integrated in the planetary hubs. And, the unique axle design of the wheel loaders gives the machines exceptionally high ground clearance, a big advantage when working in rough terrain.

Operators compartment with integrated ROPS, - Resiliently mounted on front frame, - Built to ISO standards.



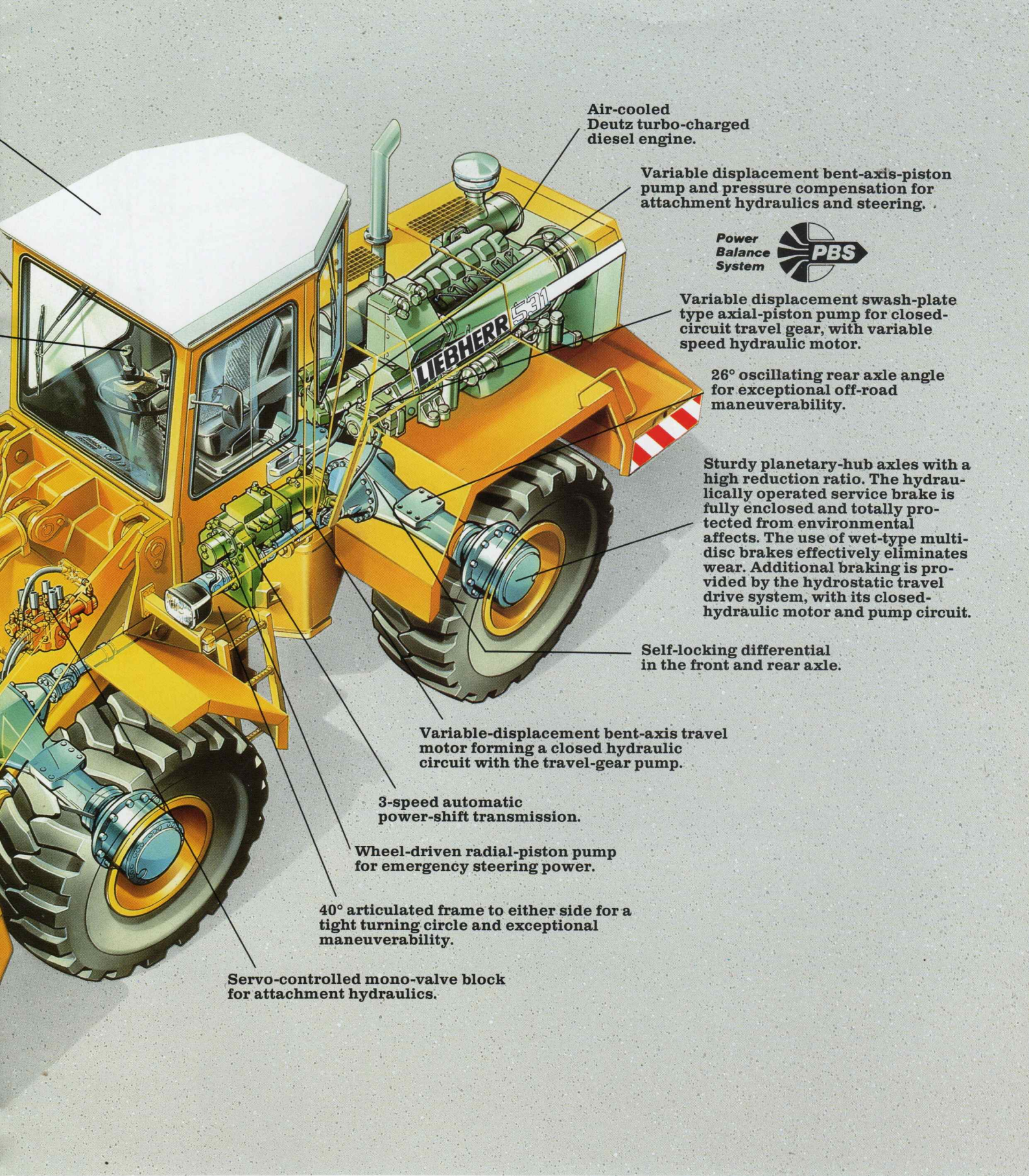
Servo-actuated "joystick" lever integrated into arm-rest for the following function:

- lifting/lowering
- filling/dumping
- manual speed-range selection
- direction control (forward/reverse)
- automatic bucket return.

Sealed pivots for extended maintenance intervals.

Z-bar loader linkage for a powerful working stroke and rapid dumping. Automatic shovel positioning and lift kick-out.

Power-Balance-System : Modern Drive Technology At Its Best



Air-cooled Deutz turbo-charged diesel engine.

Variable displacement bent-axis-piston pump and pressure compensation for attachment hydraulics and steering.



Variable displacement swash-plate type axial-piston pump for closed-circuit travel gear, with variable speed hydraulic motor.

26° oscillating rear axle angle for exceptional off-road maneuverability.

Sturdy planetary-hub axles with a high reduction ratio. The hydraulically operated service brake is fully enclosed and totally protected from environmental affects. The use of wet-type multi-disc brakes effectively eliminates wear. Additional braking is provided by the hydrostatic travel drive system, with its closed-hydraulic motor and pump circuit.

Self-locking differential in the front and rear axle.

Variable-displacement bent-axis travel motor forming a closed hydraulic circuit with the travel-gear pump.

3-speed automatic power-shift transmission.

Wheel-driven radial-piston pump for emergency steering power.

40° articulated frame to either side for a tight turning circle and exceptional maneuverability.

Servo-controlled mono-valve block for attachment hydraulics.

Best.

A modern, well-designed operator's cab on the new wheel loaders allows 360-degree, all around visibility.

The cab, mounted onto the front frame and sound-proofed to the most stringent noise level standards, meets all the requirements for an effortless and productive work cycle. Large, handy steps contribute to both the safety and easy access of the loaders. The cab is built to ISO guidelines and comes standard with built-in ROPS and FOPS.



Cab Design With A Difference.



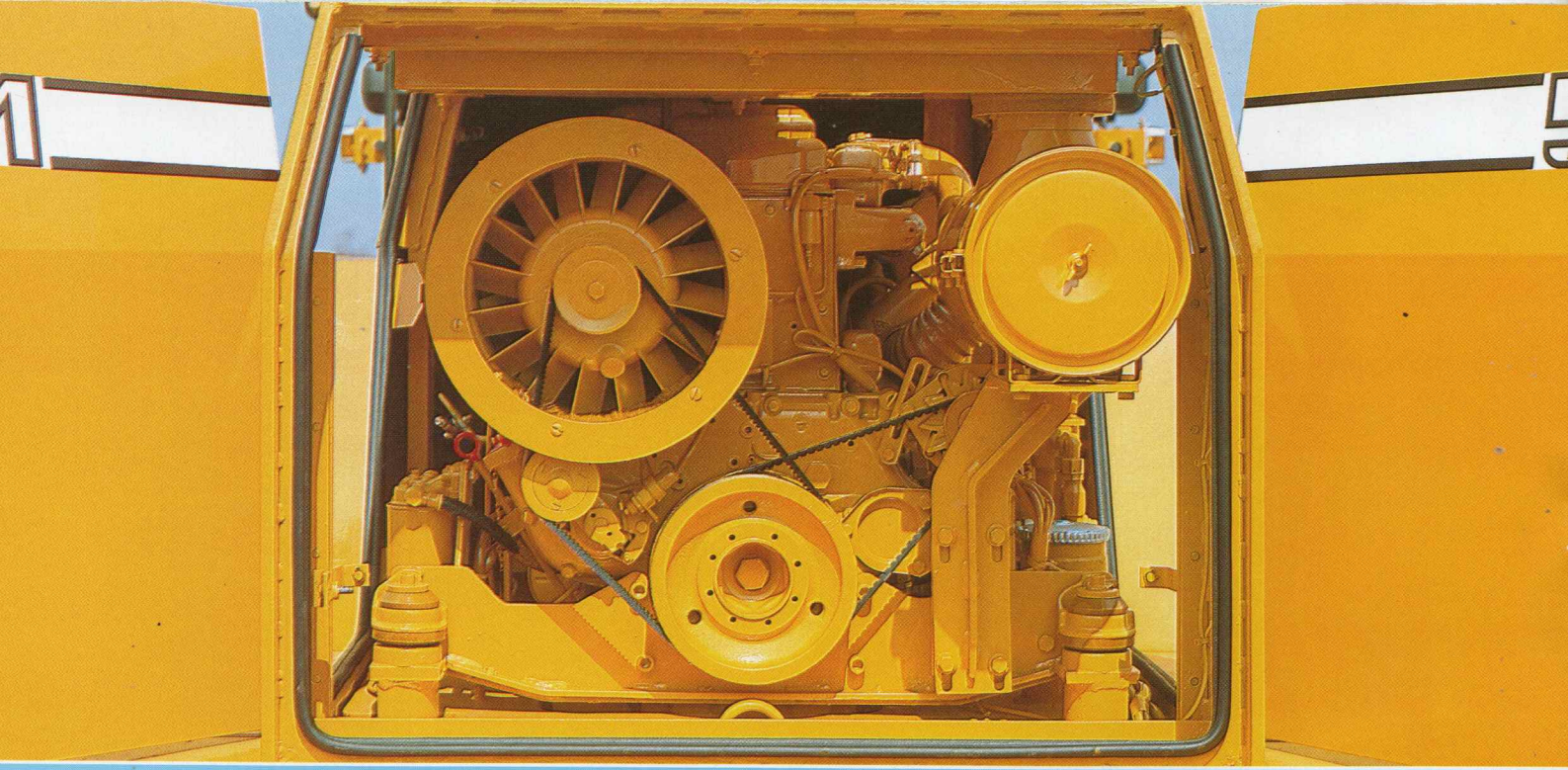
The cab's modern and functional instrument panel is located directly in front of the operator and has easy-to-read symbols and gauges that conform to ISO standards.

A control light panel and audible warning device provide complete and instant monitoring of all functions and gauges.

A unique, multi-function lever, found only on the Liebherr wheel loader, is integrated into the armrest. It controls the attachments, gear selection and travel direction with one hand, leaving the other hand free for steering.

The body-contoured driver's seat is designed to conform to the needs of the human body. It can be adjusted to suit the driver's weight and personal preference. In order for the ROPS integrated cab to be functional, a seat belt is included.



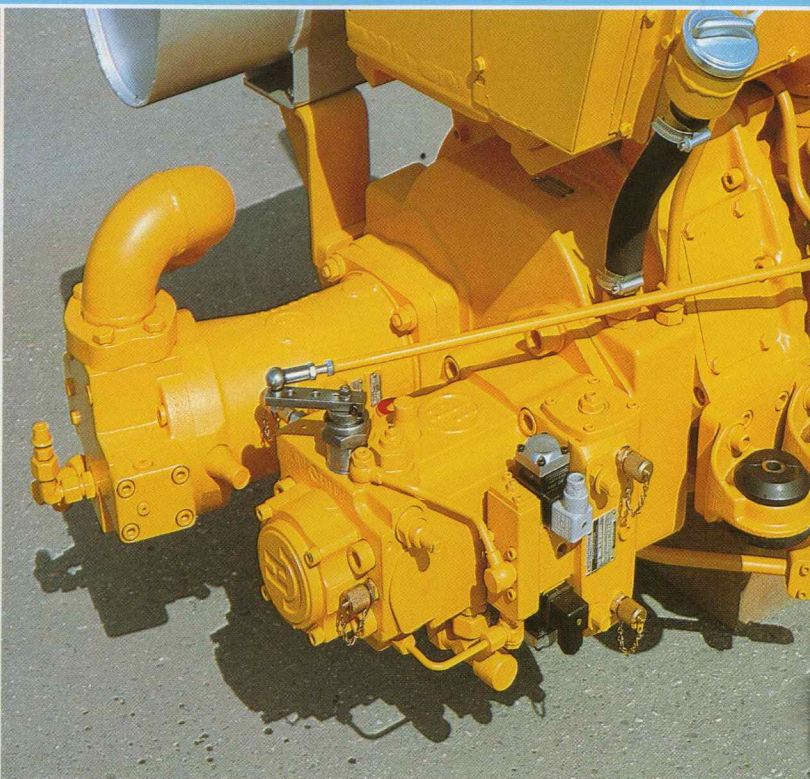
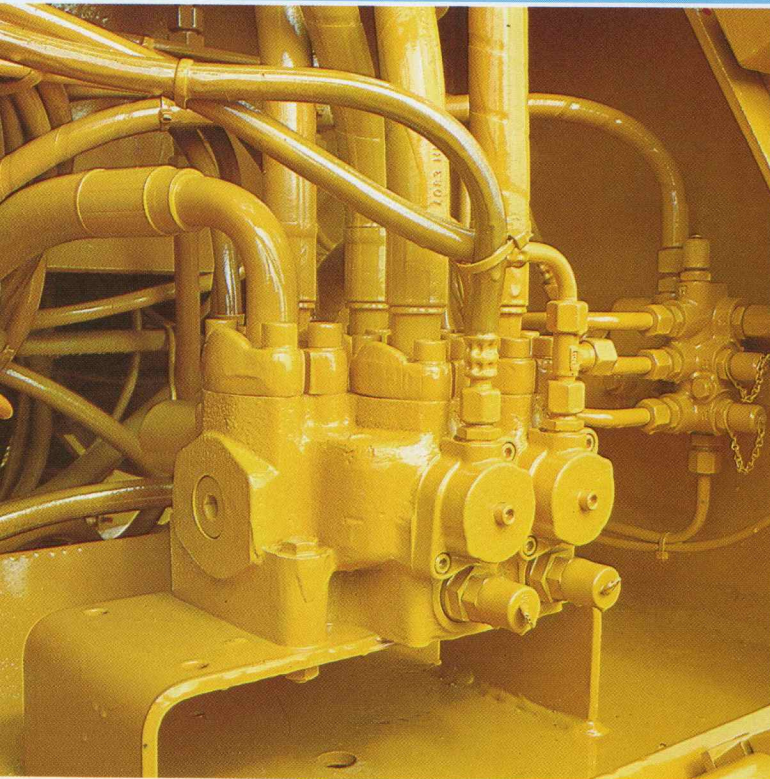


The L 531 is equipped with a powerful turbo-charged 87 kw (118 Bhp) engine and the L 541 with a 104 kw (142 Bhp) engine. Both engines assure maximum output and power

reserves, enough to meet the toughest demands. The resiliently mounted engine is accessible from all sides for easy maintenance and repair.

The servo-controlled mono-valve block, with integrated primary and secondary relief valves, operates the attachment hydraulics.

The travel pump and the combination attachment-steering pump are driven by the engine through a distributor gear and an elastic coupling. The constant and automatic engine load limit control for the travel pump assures maximum utilization of available horsepower for push-power or travel speed.



Maximum Efficiency From A Rev

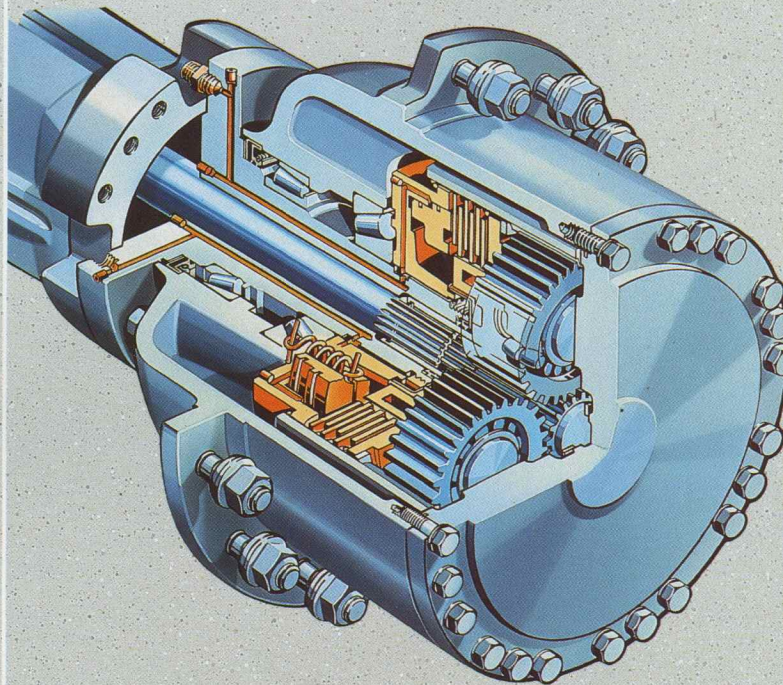
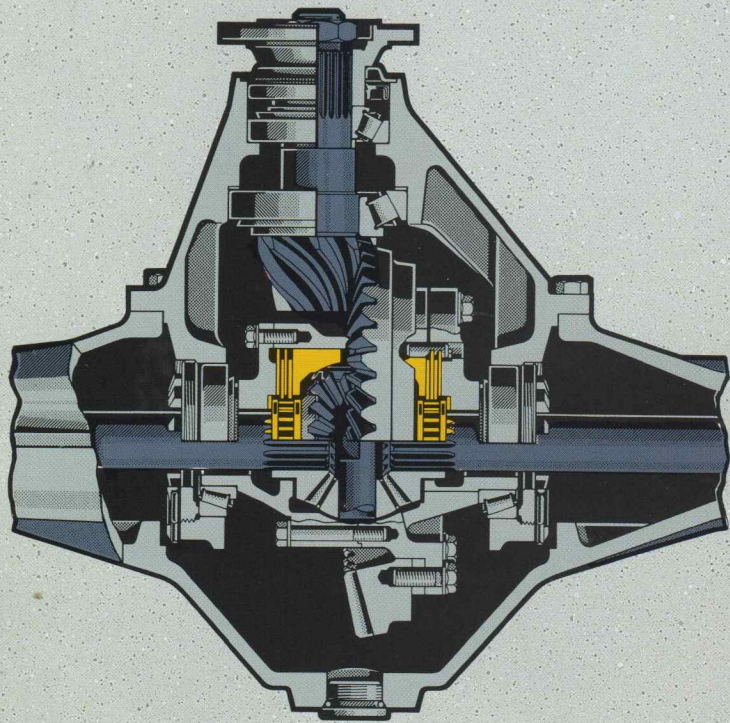


Sturdy planetary hub axles with a high reduction ratio result in a compact differential and exceptionally high

ground clearance. This and the total rear axle oscillation of 26° provides exceptional off-road mobility.

Both axles come equipped with self-locking differentials as standard items.

The maintenance free wet-type multi-disc brakes are integrated into the hubs and provide excellent protection from outside contamination. The service brake is hydraulically operated. Both axles come equipped with self-locking differentials as standard items.



olutionary Travel Drive System.



The superior geometry of the Z-bar loader linkage design of Liebherr's new wheel loaders results in increased break-out forces and faster fill and dump cycles. Automatic

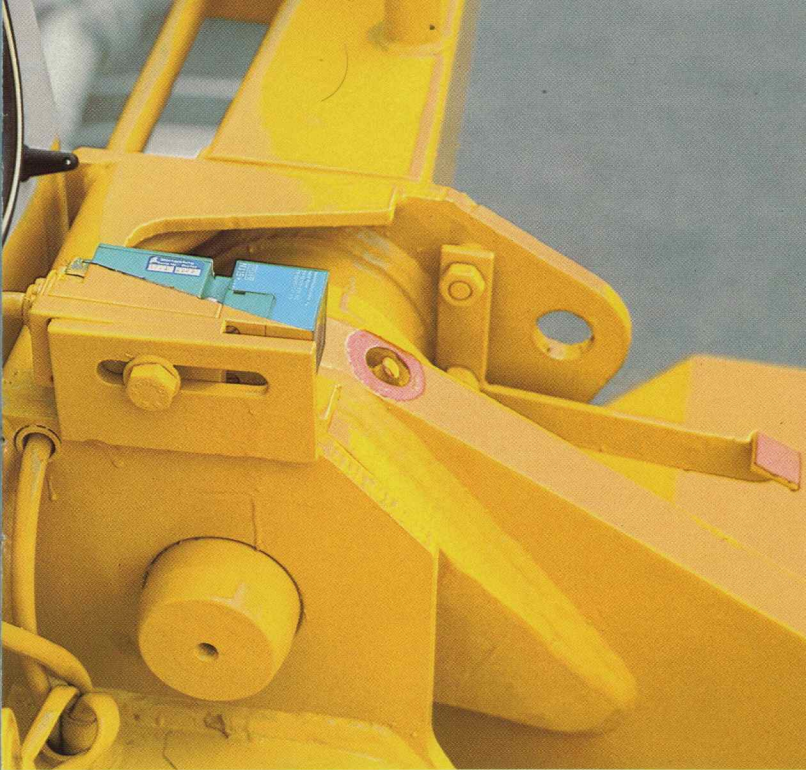
bucket positioner and lift kick-out, along with sealed pivots, assure higher output and longer life expectancy in all applications.

All hydraulic cylinders are equipped with step seals and all hydraulic lines have SAE split lunge connections to prevent hydraulic leaks.

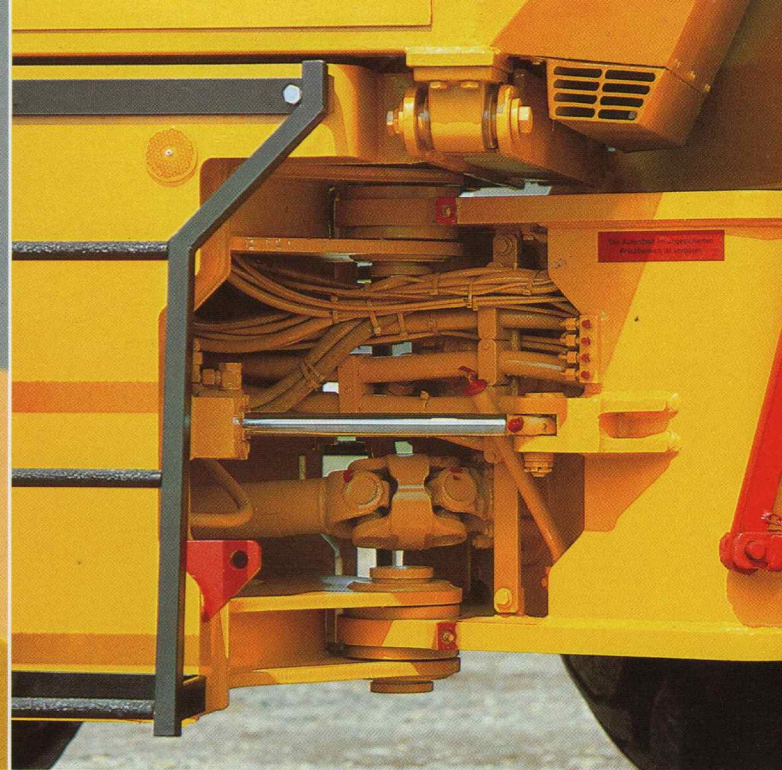
The lift arms are of a solid, steel plate construction, providing maximum strength with minimum buck. All pivots are sealed for protection against dust for extended intervals between lubrication.



More Output, Less Maintenance -

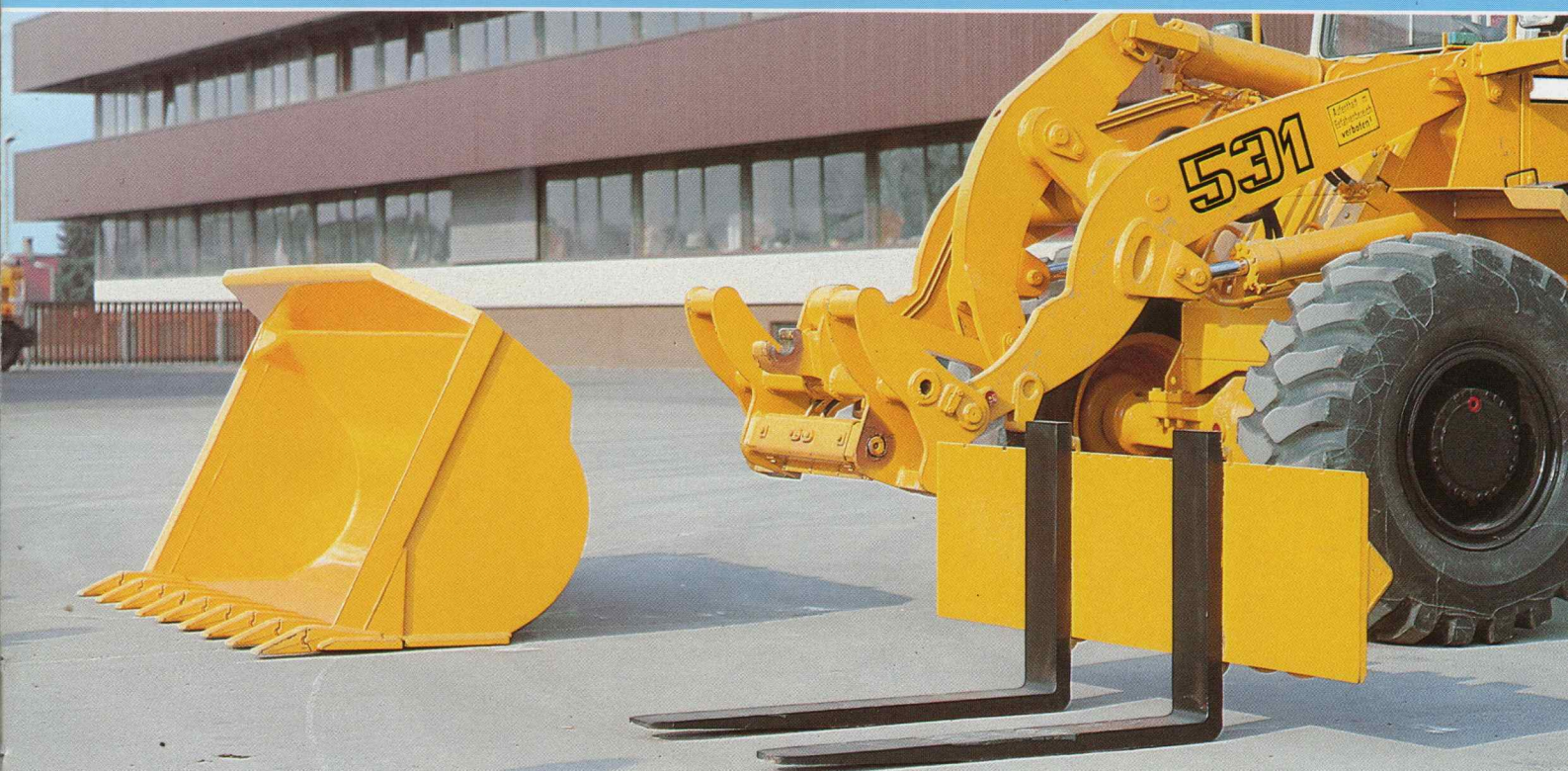


An electric lift kick-out switch prevents the hoist cylinder's piston from bottoming out.



Steering: Frame articulation of 40° to either side assures a tight turning circle and exceptional maneuverability.

Liebherr's quick change attachment coupling feature makes it easier and faster to change from bucket to forklift.



Liebherr Technology At Work.



Liebherr's new L 531 and L 541 wheel loaders are efficient and fast on the road from one job site to the next.



Printed in W.-Germany by

LHB-

Subject to change without notice.

**LIEBHERR-AMERICA, INC. · 4100 Chestnut Ave. · P.O. Box Drawer O
Parkview Station, Newport News · VA. 23605 · USA**

Phone (8 04) 2 45-52 51 · Telex 823-496

LIEBHERR-CANADA LTD. · 2222 Drew Road · Mississauga, Ontario · L5S 1B1 · Canada

Phone (4 16) 6 77-55 55 · Telex 06-968871