

**The 922.
A successful
machine —
now even
better.**



LIEBHERR

The better machine.



Superior know-how in crawler and

The R 922 is part of the "worldwide line" of Liebherr excavators - a totally new generation. Working conditions complicated by tropical heat, arctic cold, hard digging or soft ground are situations easily handled with completely new techniques of the R 922. New larger pivot arcs in the attachment enable vertical digging in a wider range, additionally avoiding bucket spillage. The 922 has increased breakout and digging forces and larger bucket capacities. Also, the machine performs faster working cycles because of its high torque, faster swing acceleration. Efficiency of the hydraulic circuits in the 922 was

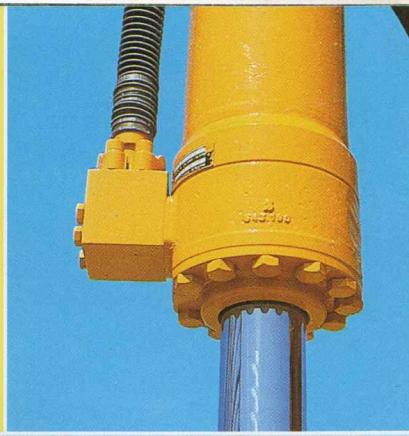
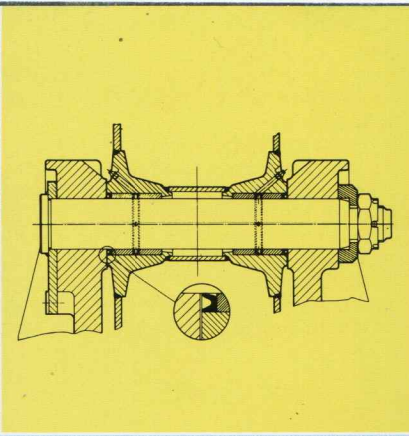
increased, and engine HP utilization has been further improved.

Low fuel consumption levels are still maintained in spite of the fact that the machine will produce more and has higher production reserves. Maintenance requirements were even lowered.

The 922 features a comfortable, operator oriented cab with new machine controls designed to save time and increase productivity. This excavator is also easier to transport because of more advantageous dimensions; in short, a machine you can't afford to overlook.



d rubber tire excavators.



Built-in long life.

The larger diameter pins of the attachment are hardened and chromed, and mounted in low-wear brass or steel bushings.

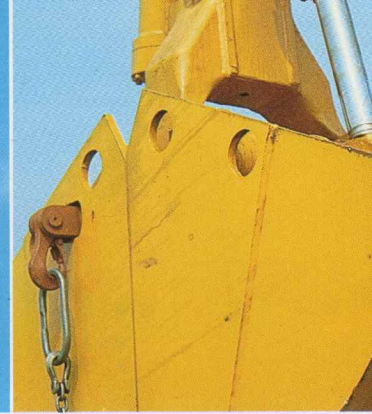
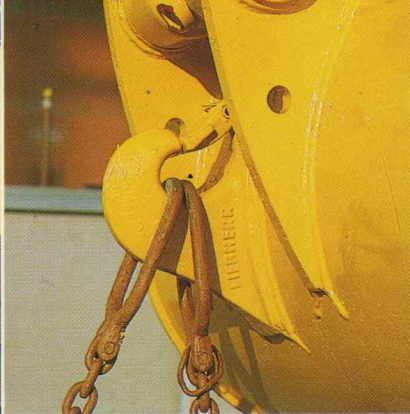
Sealed pivot points protect bearings from dirt and extend the lubrication intervals.

All cylinders are equipped as standard with stroke-end cushioning on both ends, and highly efficient step seals.

Attachment geometry has been improved considerably by increasing pivot arcs, which, for example, make vertical digging possible.



Up-to-date attachment for longer increased lifting capacity and high



Optional overload warning device with cam disc allows optimum safe utilization of lifting capacities at varying radii.

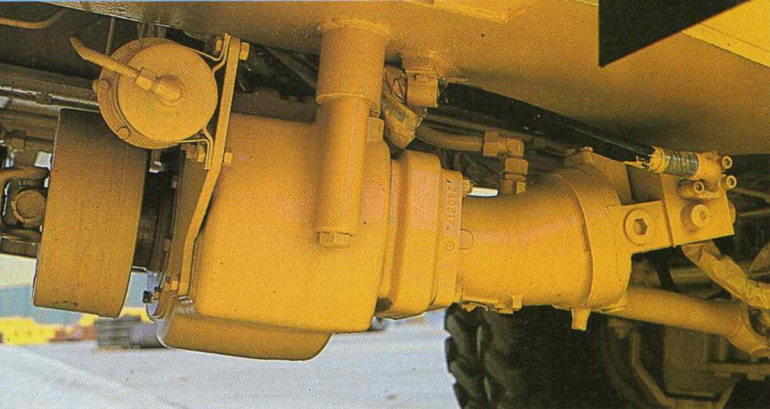
The backhoe buckets, with high wear-resistant bottom plate, are equipped with a built-in 12 ton safety hook.

As standard, the attachment is equipped with all required backhoe and clamshell hydraulic lines. This avoids adding or changing hydraulic lines if the attachments are switched.

The hydraulic clamshell has an independent cylinder for each shell for simultaneous closing of both shells, and is equipped with patented lift hook.



**reach,
her digging forces.**



Four-wheel drive with variable flow hydraulic motor, provides a wide speed range without sacrificing drawbar pull, by the flip of a switch from on-road speed range to cross-country. Automatic brake valve incorporated in the travel circuit enables downhill travel without using the foot brake or over-speeding the hydraulic motor.



The 33 ton planetary drive axles were designed especially for this machine by Liebherr. The short turning radius (internal 13'9"/4.18 m; external 24'3"/7.4 m) makes this excavator extremely maneuverable and ideal for "tight" work areas.



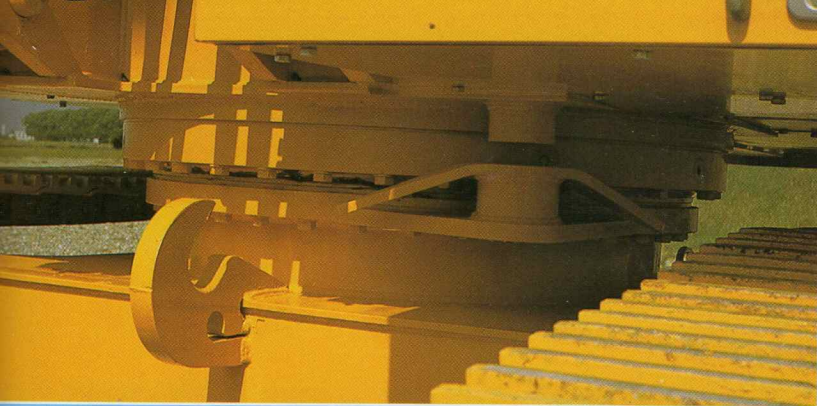
Two or four outriggers with separate cylinder for each. Pilot operated check valves securely lock each cylinder. Pivoting floor plates allow the outriggers to adjust to ground conditions.



The dozer blade with wide bottom plate reduces ground pressure, if used as an outrigger. If the blade is used for dozing, it can be raised and lowered while traveling.



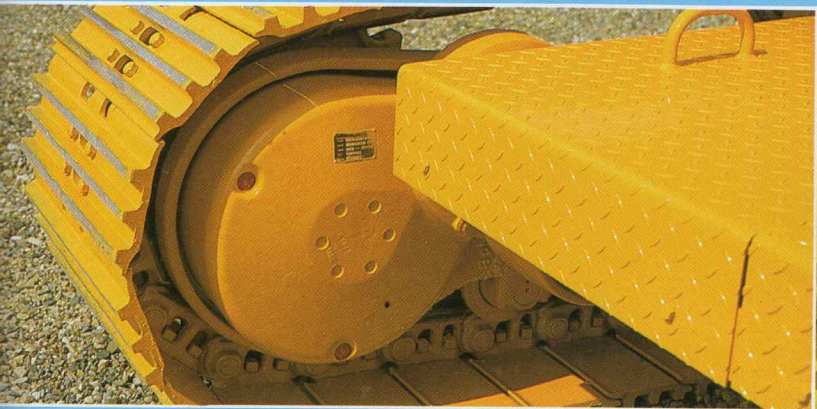
The undercarriages – solid basis
The A 922 rubber tire excavator.



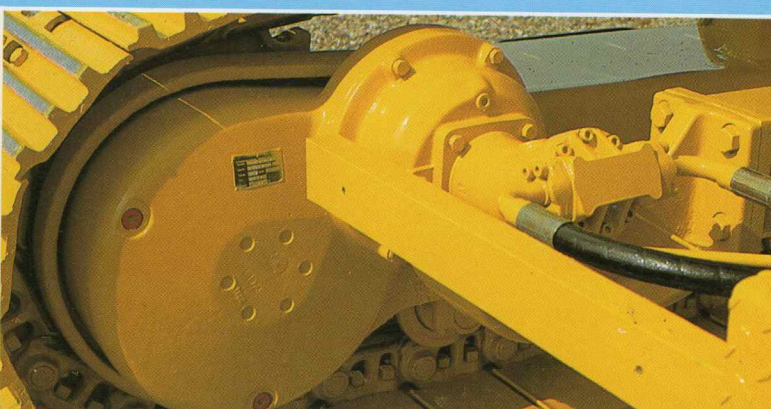
The large size swing ring has internal teeth that are protected from dirt and damage. Strong teeth and high load capacity ball-bearing ring provide a long life expectancy.



High drawbar pull for all applications. The 922 has 80% gradeability which means safe travel in soft or rough ground conditions.



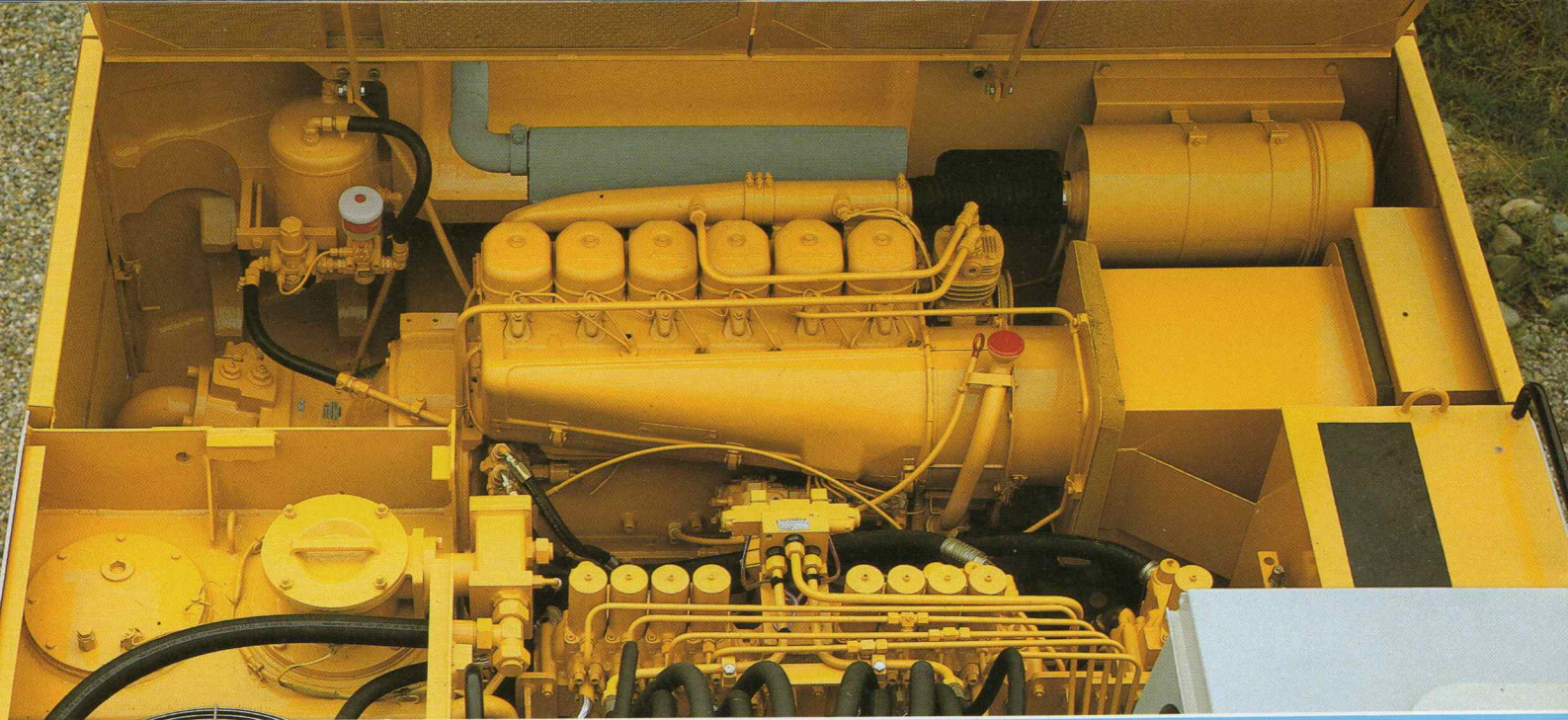
Travel drive covers and protection are standard equipment, and greatly help to reduce accidental damage to hydraulic motors and lines. Additional bottom protection plate is optional.



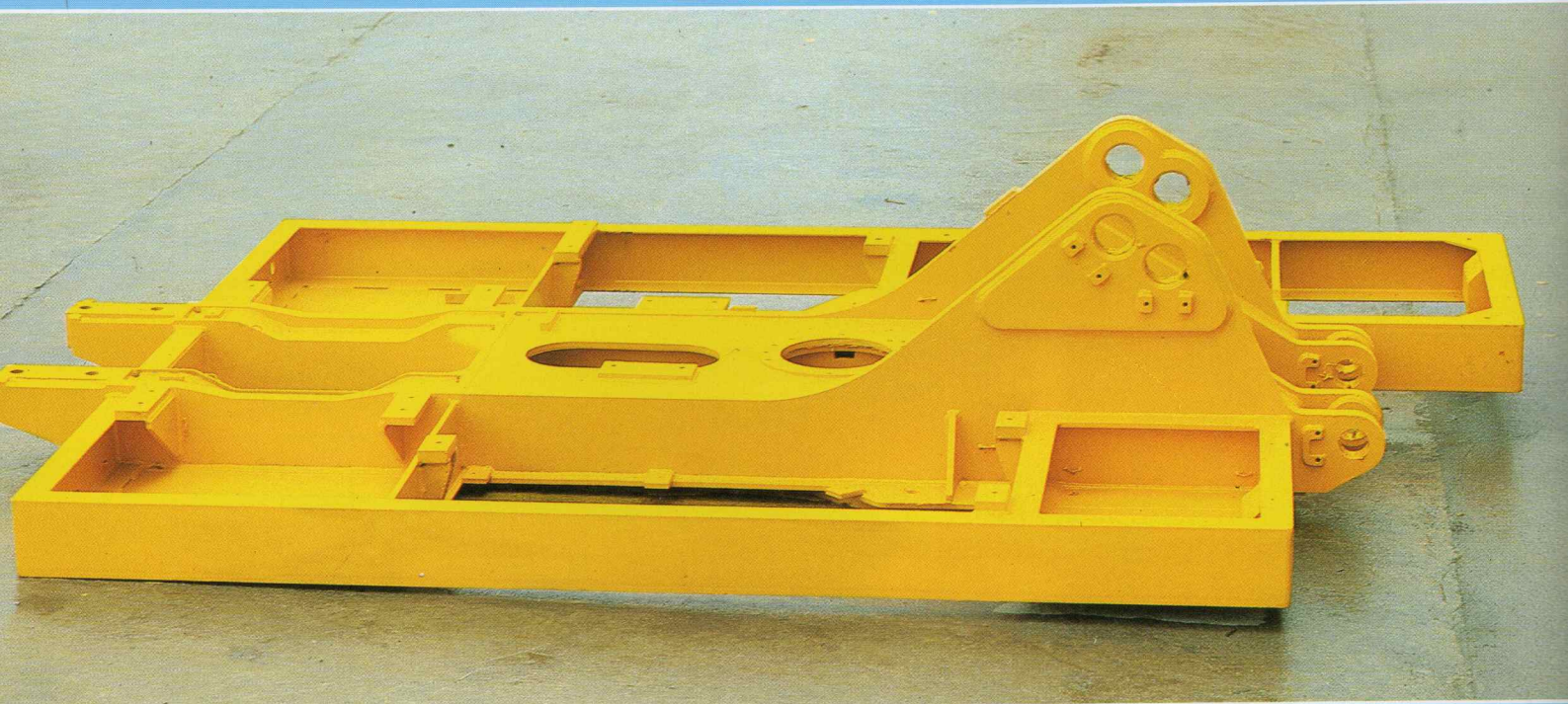
New on the 922: The combining of travel brake valves and travel brakes. The result: Much simpler control and additional safety in extreme applications. This arrangement also serves as an automatic digging lock during work, which, in turn, protects the hydraulic motors from digging reaction forces.



**or efficient work.
The R 922 crawler excavator.**

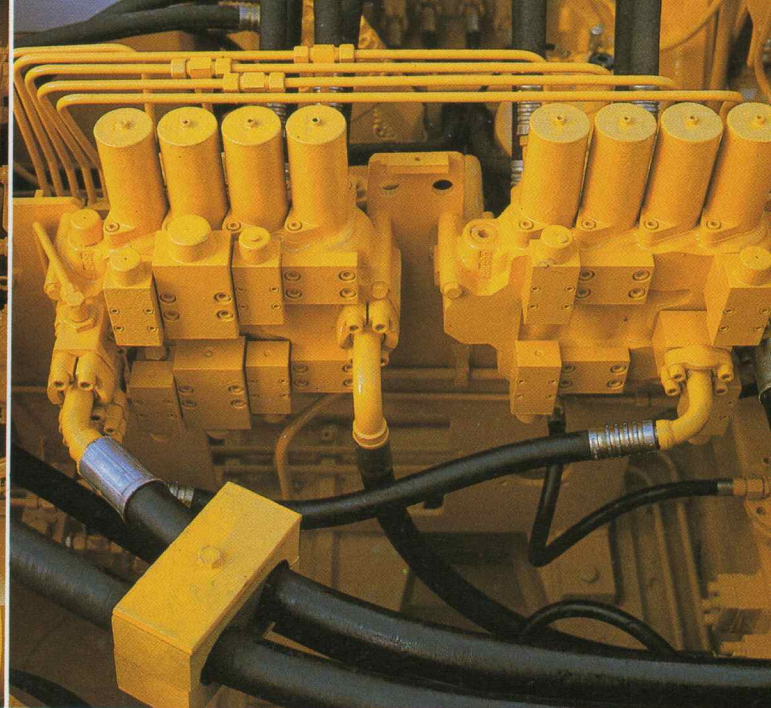
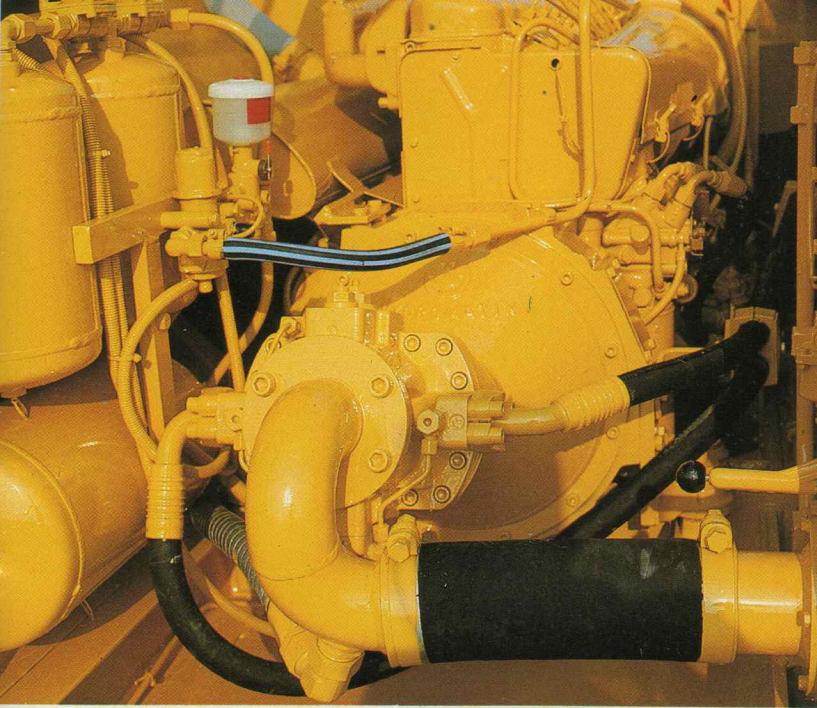


Superior performance with the air-cooled Deutz diesel engine supplying 106 BHP. The cooling air is used exclusively to cool the diesel engine. A dry air filter with pre-cleaner and safety element protects the engine from excessive wear. A visual and audible warning signal indicates fan belt failure.



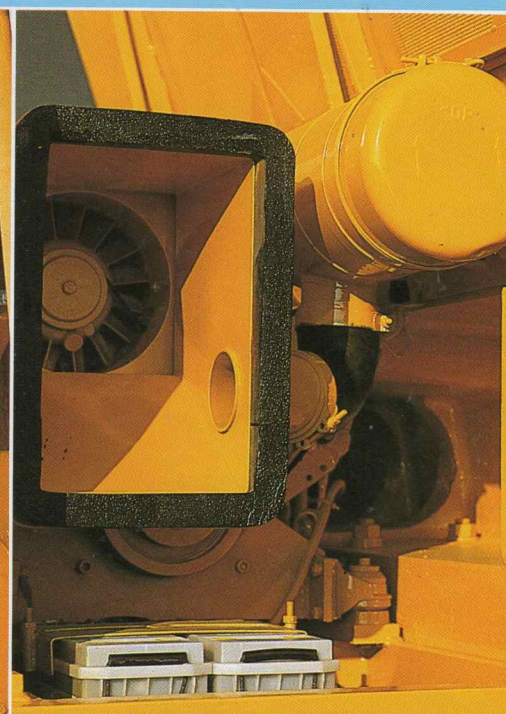
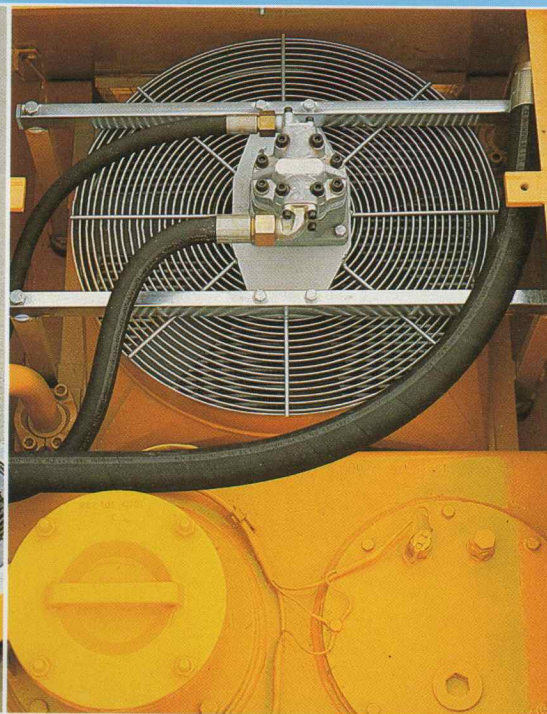
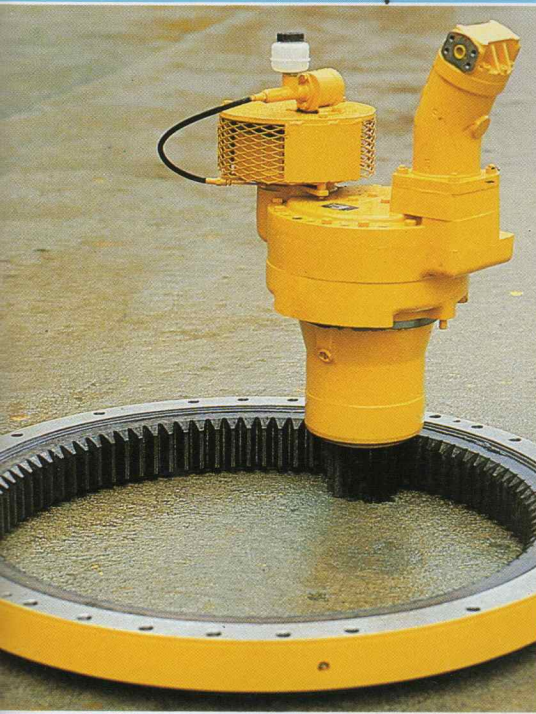
The upper frame steel structure features straight and parallel hollow-box main girders for optimum stress distribution and long life.

The upper works-optimum utilization of the electrical circuit and energy system.



Main features of the 922 hydraulic system: optimum adjustment of machine speed and power is accomplished by a wide range of flow regulation. The hydraulic tank pressurization lowers the suction resistance and increases the pump efficiency. The double pump does not need a separate gearbox, resulting in a more compact installation.

The new "hydro-tandem" control of the 922 provides full power use of all attachment motions, plus swing, independent from travel. The swing circuit, which has priority over other motions, can be used simultaneously with any attachment motion.



The swing drive: Forceful swing acceleration with the newly-developed high torque swing drive results in faster cycle times.

The hydraulic oil cooling circuit: Highly efficient, constant cooling even overcomes adversities found at peak loads in tropical heat. The large size hydraulically driven cooling fan is thermostatically controlled and guarantees optimum temperatures for the hydraulic system in all temperatures.

Noise insulation: Extensive and highly effective noise insulation results in low decibel output to operator's cab and surrounding work area.

tion of hydraulic



Instruments, warning lights and auxiliary controls are located within easy sight of the operator. All symbols and warning lights conform to SAE standards.



The body-contoured operator's seat features three-way directional adjustments. It is also adjustable to the weight of the operator, and with comfortable armrest controls, contributes to a fatigue-free work day. Headrest and safety belt are optional.



The left armrest tilts to facilitate easier entry and exit of the cab. With the armrest in the upper position, all machine controls are automatically shut off for safety.



Forward or reverse travel are electrically selected with a switch and speed in either direction is controlled by a foot pedal. Fully hydraulic and power assisted front wheel steering is proportional to the motions of the steering wheel.



The crawler machine travel is controlled by two heel-toe foot pedals in the center of the cab, directly in front of the operator. This provides better maneuverability in difficult applications as the hands are free to operate swing and attachment functions simultaneously. To the left of the travel pedals, is the occasionally used swing brake control pedal.

A trend setting workplace.

The 3' (94.5 cm) wide and 5'7" (170 cm) long roomy and comfortable operator's cab is designed in accordance with the latest regulations and recommendations.

The noise level in the cab is below 80 dBA. The front window can be opened easily (retracted overhead into the roof in North American cab).



The comfortable operator performs better.



Movement from job to job is easily accomplished with either the crawler or rubber tire mounted machine. The rubber tire unit does not have any problem since it travels on its own undercarriage, while transportation of the crawler machine has been simplified considerably by reductions in its overall height.



Printed in W.-Germany by Wolf
LHB-0219-A-10/81-4.5. e.

Specifications and dimensions are subject to change without notice by Liebherr-America, Inc. Liebherr-America, Inc. is not responsible for printing or publication errors.

LIEBHERR-AMERICA, INC. 4100 Chestnut Avenue, Newport News, VA 23 605, Phone (8 04) 2 45-52 51, Telex 823-496
LIEBHERR-CANADA, LTD. LIEBHERR SALES & SERVICE, 2222 Drew Road, Mississauga, Ontario L5 S1 B1,
Phone (4 16) 6 77-55 55, Telex 0 69 68 871
LIEBHERR-FRANCE S.A. 2, rue de l'Industrie, F-68005 Colmar Cédex, Phone (89) 23 99 13, Telex 880 986
LIEBHERR-HYDRAULIKBAGGER GMBH, D-7951 KIRCHDORF/ILLER, Phone (0 73 54) 8 00, Telex 0719600-0
LIEBHERR-EXPORT AG, Postfach, CH-5415 Nussbaumen/AG, Phone (0 56) 82 02 11, Telex 53 578