

R932



LIEBHERR

The better machine.

Introducing Liebherr's R 932: part of the worldwide line of versatile Liebherr excavators enabling the owner to match machine size and job requirements.

The R 932 is unusually strong for its size. With its tremendous breakout and digging forces, high lift capacities and high torque swing acceleration, the R 932 is a powerhouse in the toughest job applications. And although the machine rates high on performance, it's low on fuel consumption.

Versatility is another strength of the R 932. The hydraulic pump system is automatically regulated to guarantee maximum use of engine horsepower when and where it is needed, depending on the job requirements. So, more types of jobs can be handled by the most efficient means.

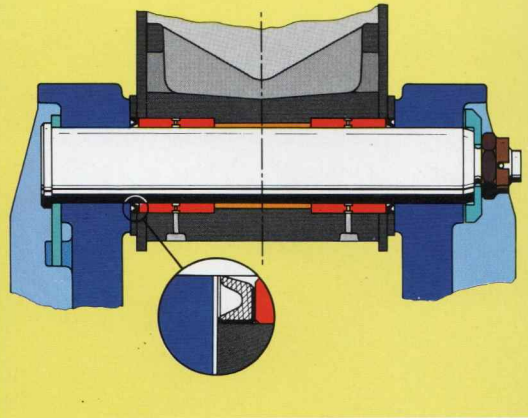
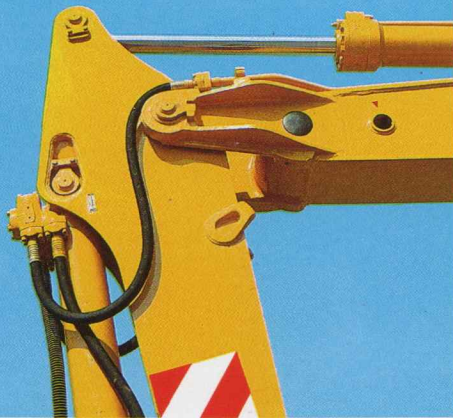
The R 932's oversized, sturdy undercarriage provides an ideal base for work. And the trend-setting, comfortable operator-oriented cab provides an ideal place to work from.

Strength, versatility, efficiency and more are all rolled into the R 932 - a powerhouse of production.



A powerhouse of production.





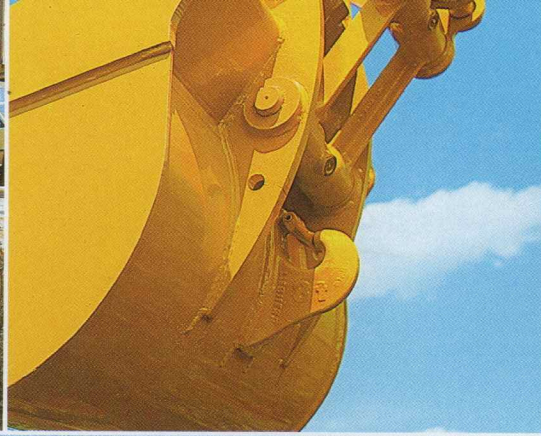
All hydraulic lines have SAE flange connections which greatly reduce hydraulic leaks, therefore increasing machine reliability. Attachment pins are hardened, chromed and mounted in wear-resistant bronze or steel alloy bushings for long attachment life.

All pivot points have special seals to protect bearings from dirt and water, extending lubrication intervals.

All cylinders are equipped with highly efficient step seals and stroke cushioning at full extension to guard against shock.



**The attachment:
long on performance.**



Improved attachment geometry and considerably increased pivot arcs enable proficient vertical digging.

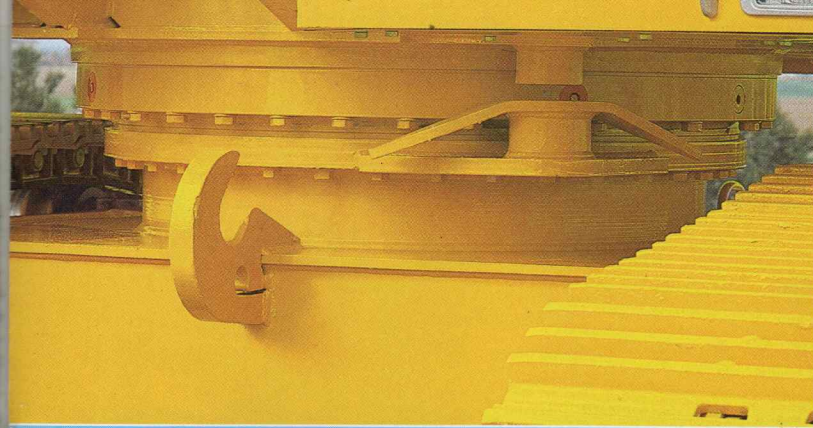
Backhoe buckets are built with a 12-ton safety hook. Precise attachment control allows accurate positioning of heavy loads such as pipes, manholes and culverts.

A backhoe/clamshell switch valve and all required backhoe/clamshell hydraulic lines are standard equipment, allowing quick and easy attachment changes. Time associated with attachment switches is substantially reduced.

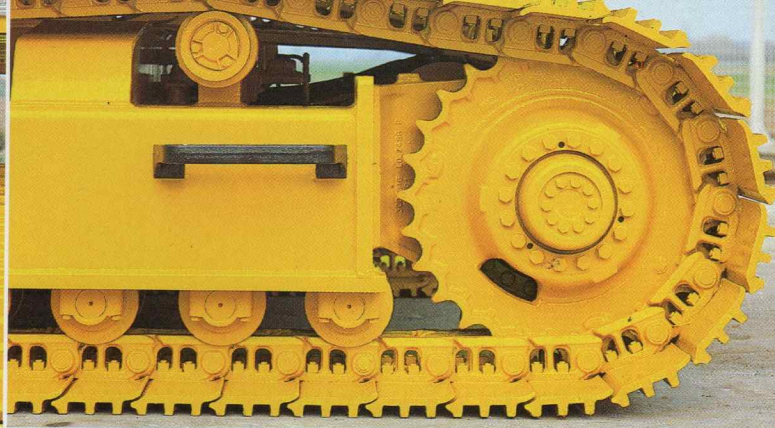




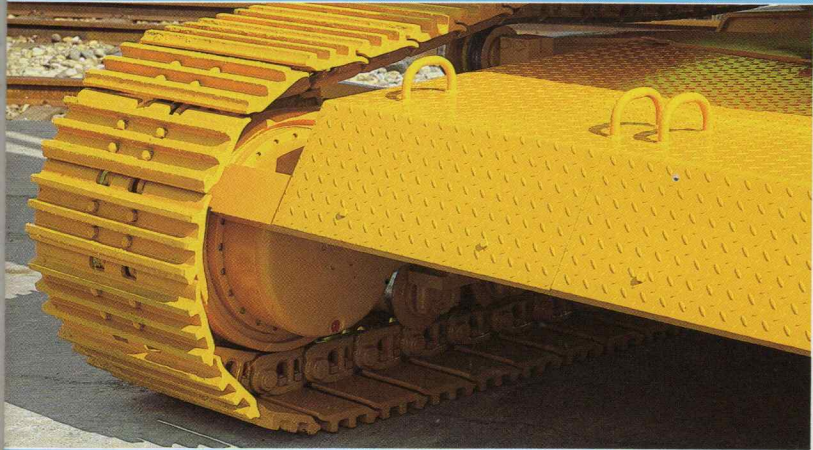
**Top performance starts
at the bottom.**



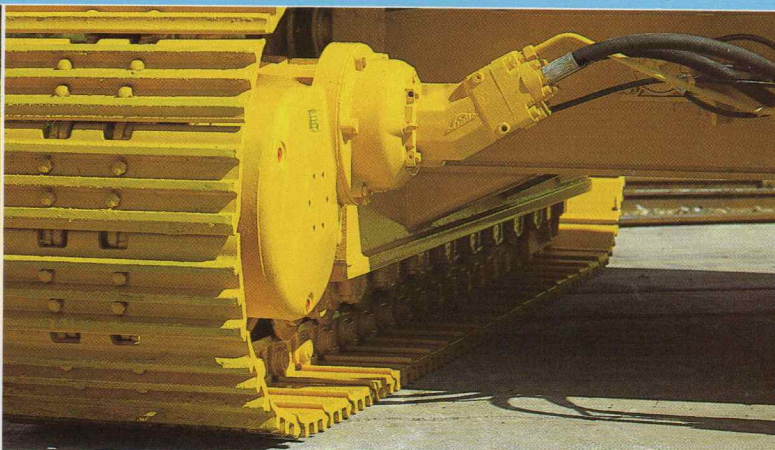
The large diameter swing ring features a high load capacity ball bearing, and strong, internal teeth for long life expectancy. The internal teeth are well protected from dirt and damage.



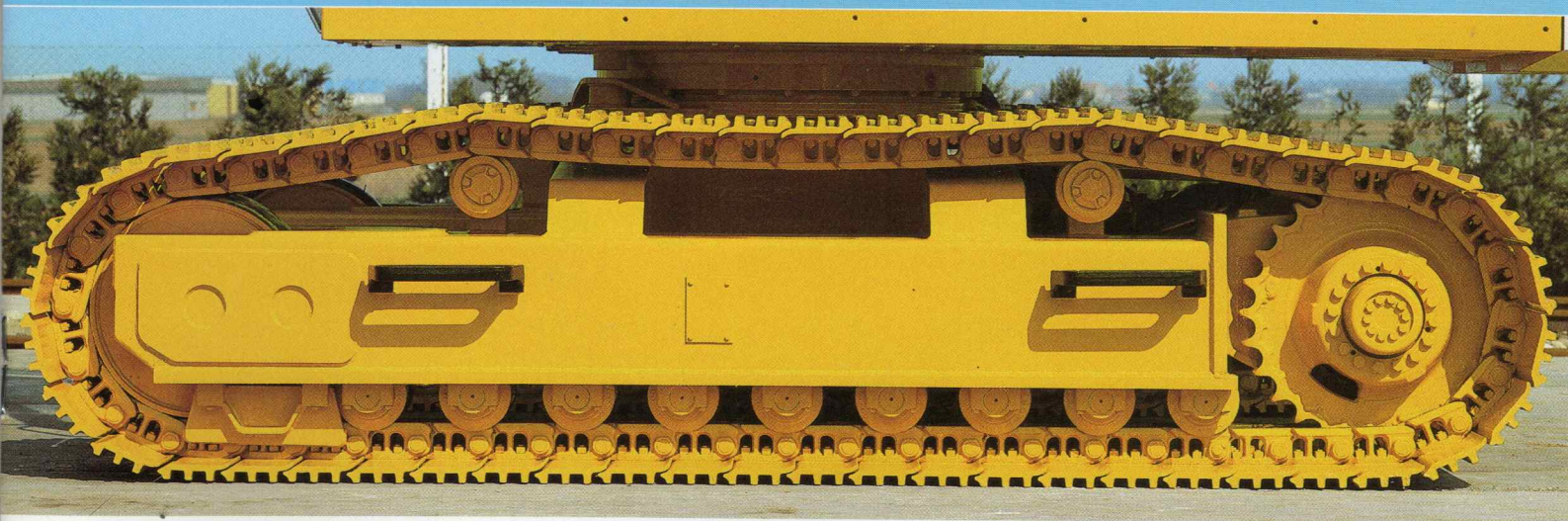
Having a choice of two undercarriages enables you to match the machine to job conditions. Designed for long life and stability, the undercarriage is built from durable, wear-resistant steel components. High drawbar pull and 80 percent gradeability give the R 932 good traction in all ground conditions.

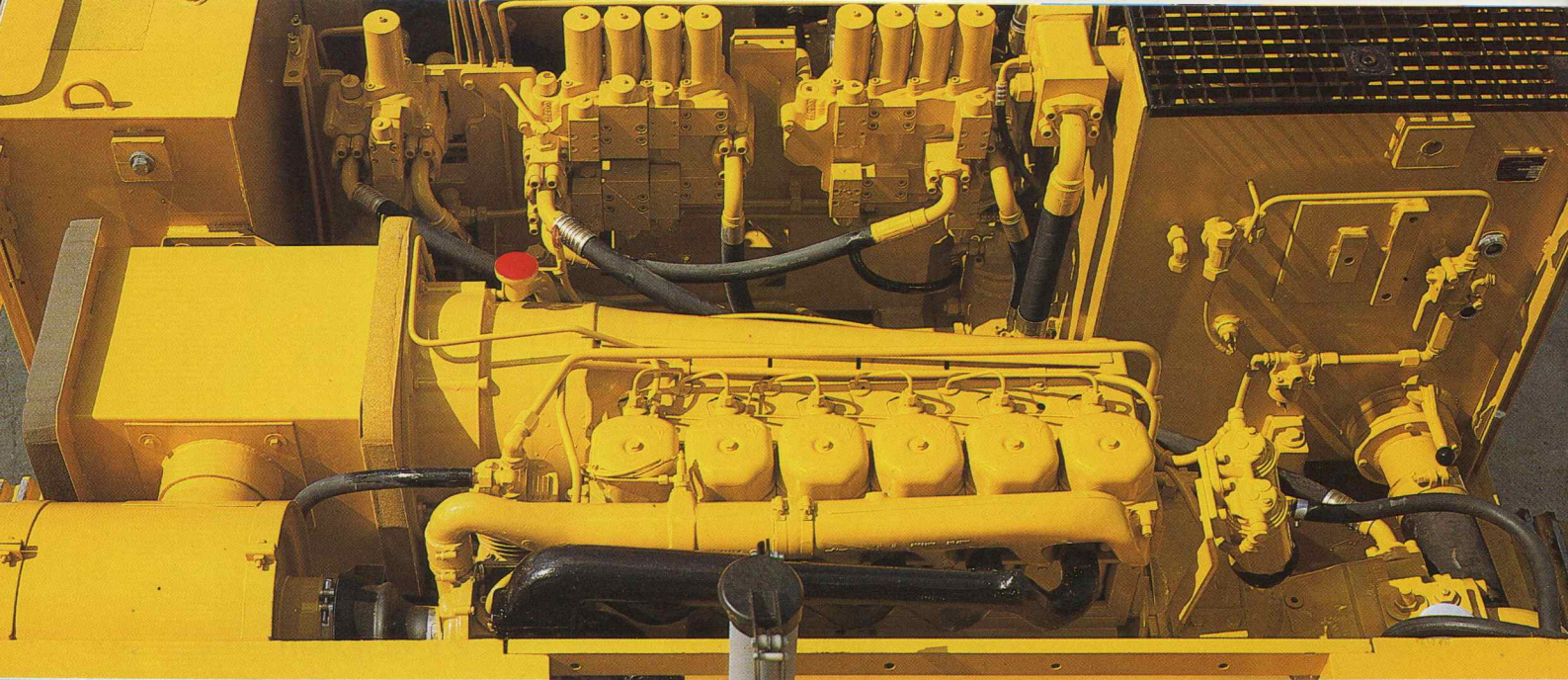


A travel drive cover over the full width of the carbody protects hydraulic lines and motors from accidental damage. Additional bottom plate protection is optional.

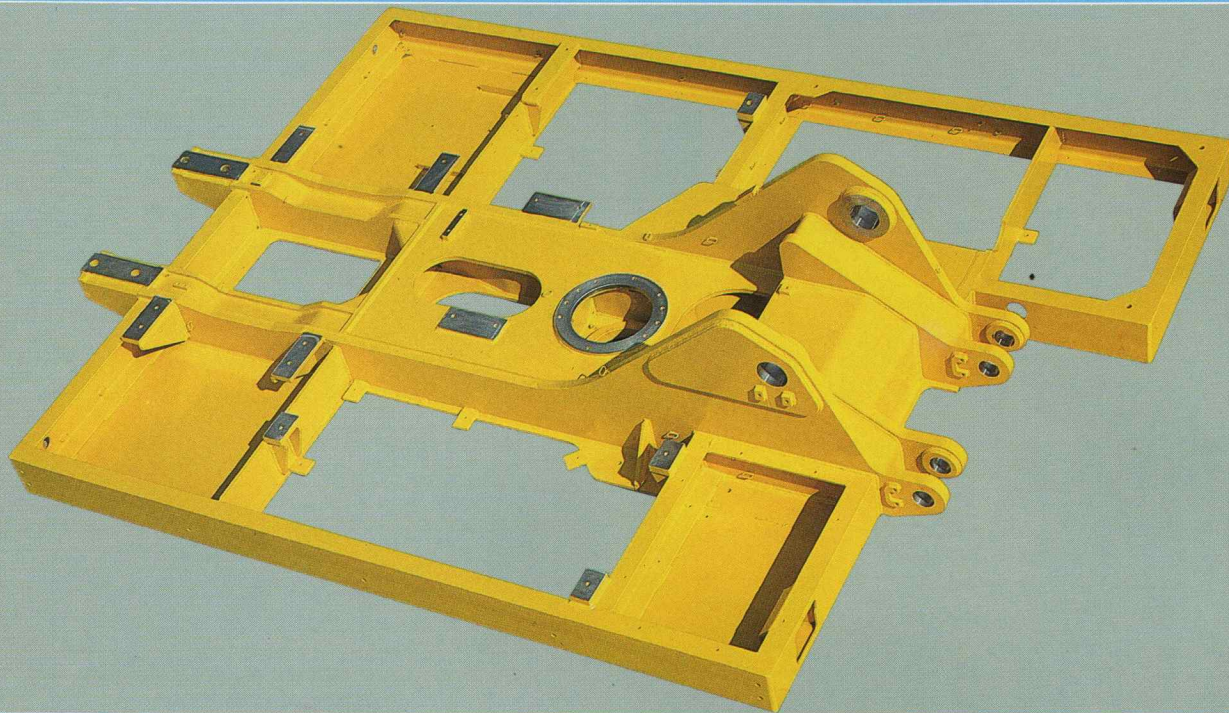


Travel brake valves automatically control speed on downhill travel and lock the machine during the working cycle. The R 932 is also equipped with air-over-hydraulic drum brakes as an additional safety feature.





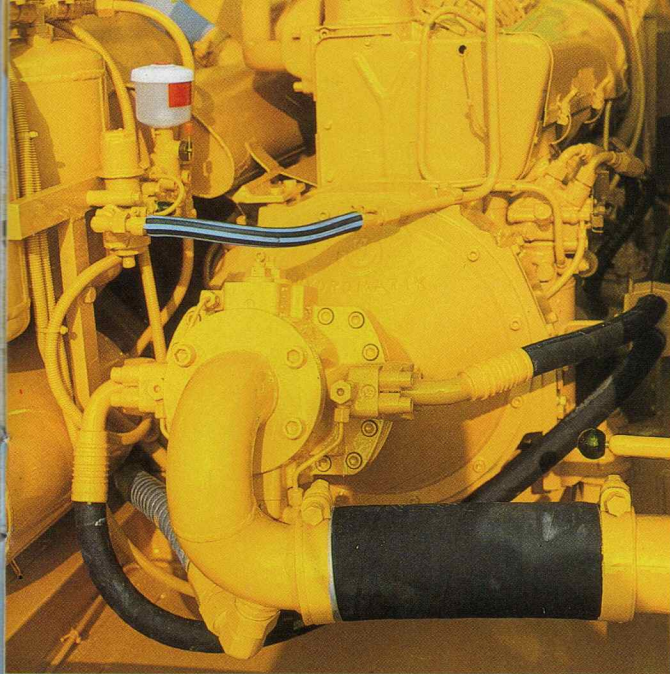
The fuel efficient Deutz air-cooled, diesel, six-cylinder engine produces 152 BHP (112 kW). The 932 has a high power reserve for high altitude operation and additional engine driven accessories.



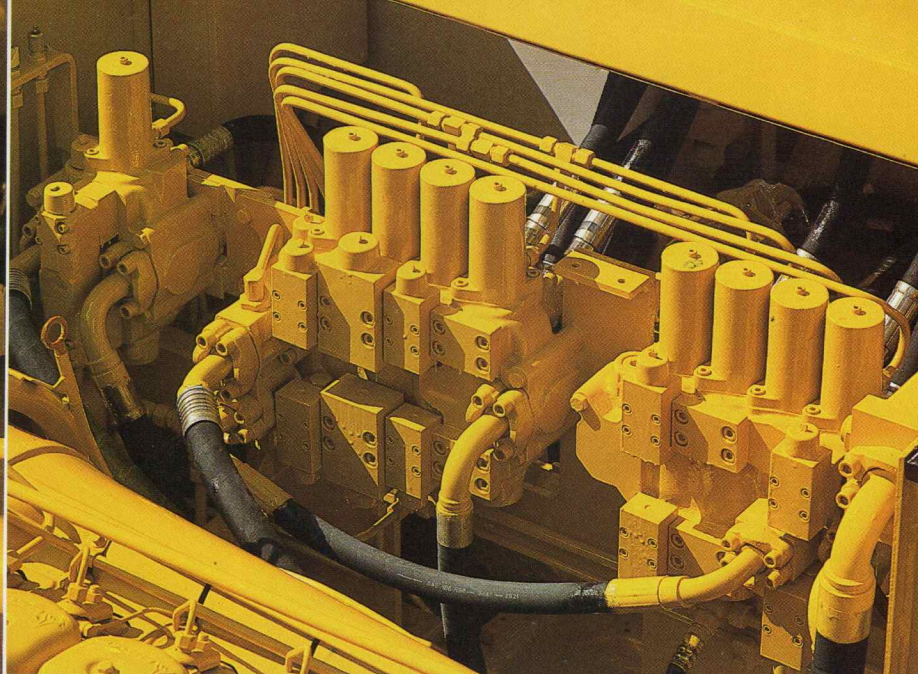
Parallel, hollow-box section main frame is torque-resistant for optimum stress flow and maximum strength. This well-proven design provides a solid base for the swing ring connection, swing

drive, diesel engine, counterweight and attachment. All resulting forces and stresses from the attachment are safely distributed throughout this wide mounting base.

**The upper: modular, efficient,
easily accessible.**



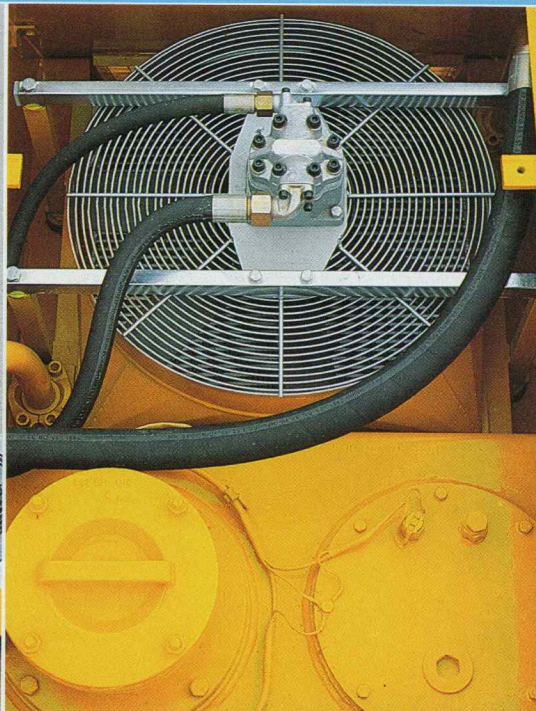
Optimum adjustment of machine speed and power to constantly changing digging conditions is accomplished by wide range pump flow regulation with automatic flow summation and working pressures up to 4350 PSI (300 bar). This system offers maximum utilization of engine horsepower.



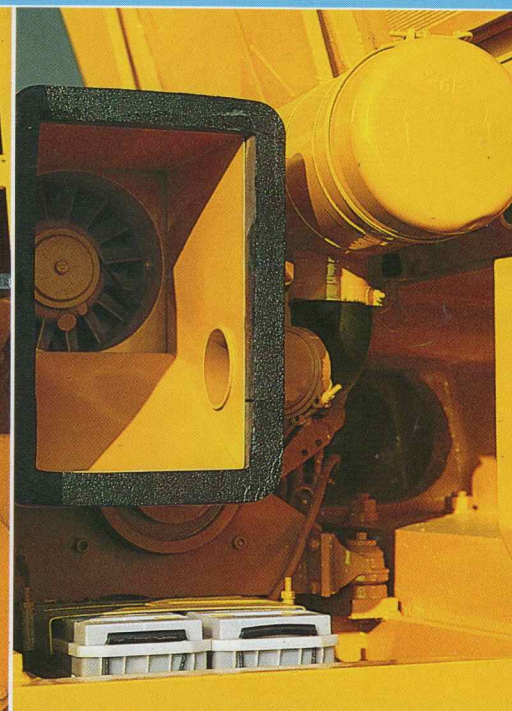
Hydro-tandem control provides full use of all attachment motions, plus swing, independently from travel. Short, straight hydraulic lines result in fewer oil direction changes, reduced internal friction and improved hydraulic efficiency.



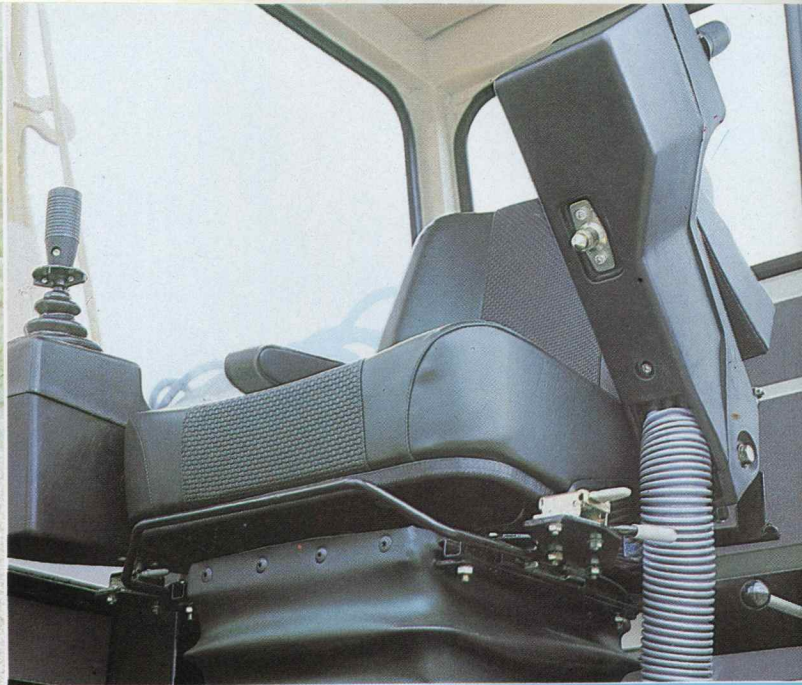
The swing drive: powerful swing acceleration with the new swing ring, which has absolute priority and is supplied with maximum hydraulic power whenever required. This results in faster work cycles and more production.



Hydraulic oil cooling: constant performance even in peak load applications or extreme climatical conditions with the machine's thermostatically controlled hydraulic oil cooling system.



Extensive and effective noise insulation in the engine compartment reduces noise levels in the operator's cab and surrounding work area.



The comfortable operator's seat with body-contoured cushioning is completely adjustable and offers plenty of room. Machine control consoles are incorporated into the seat for fatigue-free, efficient work. Armrests are standard.

When the left console is tilted up for cab entry and exit, all hydraulic controls automatically deactivate, preventing accidental movement of the machine.



The instrument console, located within easy reach and sight of the operator, contains all necessary controls and gauges for engine, hydraulic, and air circuits. All symbols and warning lights conform to international standards.

Travel is controlled by two toe-heel foot pedals, located directly in front of the operator at the cab's center. With foot-controlled travel, the operator's hands are free to control swing and attachment functions, making the machine highly maneuverable in difficult applications.

The cab: comfort and efficiency for the operator.

The operator's cab meets the most stringent European and North American standards for size and design. Among the trend-setting design features are: the extra wide door, full 360° visibility, adjustable windshield and spacious control area. Special sound absorbing material inside the cab keeps noise well below legal levels.



LIEBHERR-FRANCE S.A.



LIEBHERR-HYDRAULIKBAGGER GMBH.



LIEBHERR-AMERICA, INC.



Printed in W.-Germany by Eberl

LHB-0249-A-05/82-6.e

Specifications and dimensions are subject to change without notice by Liebherr-America, Inc. Liebherr-America, Inc. is not responsible for printing or publication errors.

LIEBHERR-AMERICA, INC., 4100 Chestnut Ave., P.O. Box Drawer O, Parkview Station, Newport News, VA. 23605, USA,

Phone (804) 245-5251, Telex 823-496

LIEBHERR-CANADA LTD., 2222 Drew Road, Mississauga, Ontario L5S 1B1 Canada,

Phone (416) 677-5555, Telex 06-968871

LIEBHERR-FRANCE S.A., 2, rue de l'Industrie, P.O. Box 287, F-68005 Colmar-Cédex, Phone (89) 23 99 13, Telex 880986

LIEBHERR-HYDRAULIKBAGGER GMBH, D-7951 Kirchdorf/Iller, Phone (07354) 80-0, Telex 0719600-0

LIEBHERR-EXPORT AG, Kirchweg 46, P.O. Box, CH-5415 Nussbaumen/AG, Phone (056) 82 02 11-16