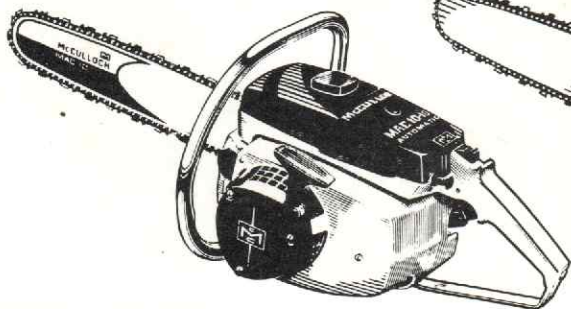
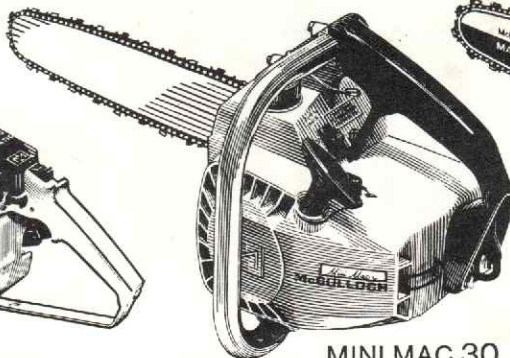


McCULLOCH SUPER LIGHTWEIGHT CHAINSaws

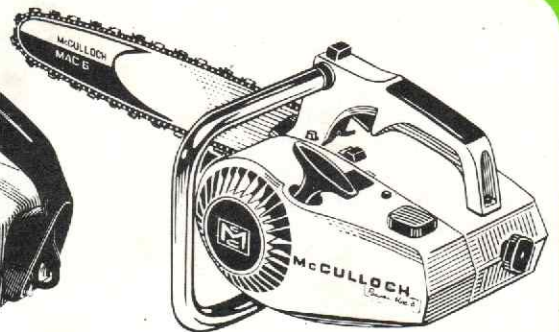
Power Mac 6A
Mini Mac 30
Mac 10-10 A



MAC 10-10 A



MINI MAC 30



POWER MAC 6 AUTO

POWER MAC 6 AUTOMATIC
High power-to-weight ratio.
Safe and easy one-hand control.
16" narrow profile bar.

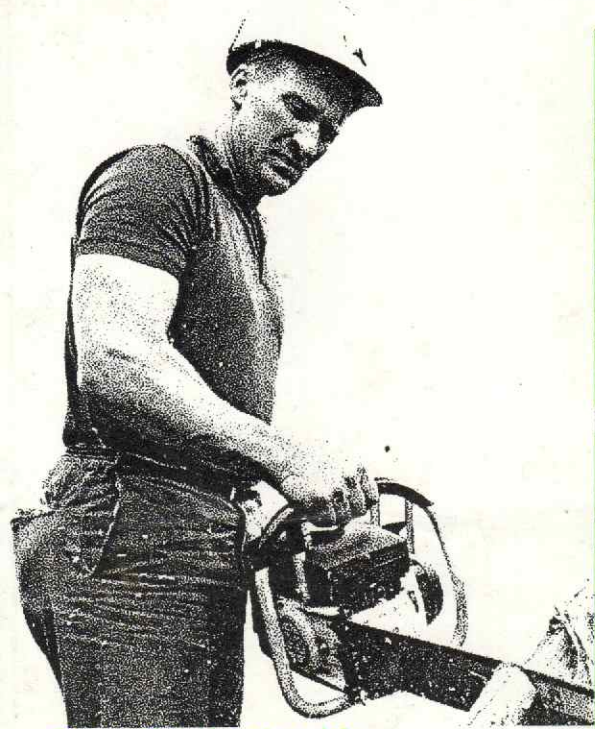
A tough, super-lightweight that handles like a carving knife yet gets through a ton of work. Rugged 35 cc engine puts out enough power to cut through an 8-inch log in only six seconds. Features: 7-lb power unit; master grip positioned directly over saw's centre of gravity for safe and easy one-hand control; vertical air filter traps dirt more effectively; all controls grouped at fingertips.

MINI MAC 30
World's lightest chainsaw.
Easy one-hand control.
12" narrow profile bar.
Choke-type carburettor for easy all-weather starting.

The world's lightest chainsaw (6½ lb) at the world's lightest price. With real "big saw" features, the Mini Mac 6 outperforms saws twice its size, yet makes wood cutting just a light chore. Features: 6½-lb power unit; 12" bar cuts up to 24" diameter; master grip for easy one-hand control; clover-leaf sprocket is self-cleaning, drives chain more smoothly.

MAC 10-10 AUTOMATIC
Powerful 55 cc engine.
Left-hand start.
16" bar factory installed.

The MAC 10-10A provides big 55 cc power in a lightweight saw made to sell at a low price. Left-hand start lets you cut closer to the ground. Features: 11¾-lb power unit; 16" bar cuts up to 32" diameter; adjustable throttle latch advances throttle for safe and easy starting.



Doug Youd cuts with McCulloch

World Champion axeman and top pro cutter says: "No sense having a big, heavy saw for all the regular jobs around the place when a McCulloch super-lightweight handles so easy and packs so much punch. They're a must for anyone on the land who's serious about saving money."



ONLY McCULLOCH MATCHES EVERY PART OF THE CHAINSAW McCulloch match-design chain, bars and sprockets to turn McCulloch engine power into maximum cutting power. ∴ genuine McCulloch replacement parts keep your McCulloch cutting at peak performance, the way it was designed! And specially formulated McCulloch premium-grade oils give maximum performance and longer saw life. McCulloch Chain, Bar & Sprocket Oil with special "MOLY" additive, and McCulloch 40:1 Fuel Oil match the precise tolerances of McCulloch saws.

McCULLOCH CONVENIENCE FEATURES	MINI MAC 30	POWER MAC 6 AUTOMATIC DIRECT DRIVE	MAC 10-10 AUTOMATIC
Weight	6½ lb (2.95 kg)	7 lb. (3.17 kg)	11 lb. (5.32 kg)
Guide Bar	12" Factory installed	16" Factory installed	16" Factory installed
Overall Dimensions	7⅞" H x 8½" L x 9" W (200 x 216 x 228 mm)	7" H x 9½" L x 7" W (178 x 261 x 178 mm)	10" H x 15" L x 9½" W (254 x 381 x 240 mm)
Muffler	Stack Spark Arrester ("Sound Silencer" optional at extra cost)	Spark Arrester ("Sound Silencer" optional at extra cost)	"Sound Silencer"
Easy Starting	Automatic rewind with nylon rope	Automatic rewind with nylon rope	Automatic rewind with nylon rope
Bar/Chain Oiling	Manual	Automatic plus manual	Automatic plus manual
Handle Frame	"Master Grip" with grouped controls	"Master Grip" with grouped controls	Flush cut design
ENGINE SPECIFICATIONS			
Power Unit	Single cylinder, two-cycle, high-performance, air-cooled, loop scavenged engine	Single cylinder, two-cycle, high-performance, air-cooled, loop scavenged engine	Single cylinder, two-cycle, high-performance, air-cooled, loop scavenged engine
Displacement	1.8 cu. in. (30 cc)	2.00 cu. in. (32 cc)	3.3 cu. in. (55 cc)
Bore & Stroke	1.375" x 1.201" (35 x 30.6 mm)	1.438" x 1.201" (36.5 x 30.6 mm)	1.75" x 1.375" (44.4 x 35 mm)
Cylinder	Chrome	Chrome	Reborable
Bearings	Needle anti-friction type	Needle anti-friction type	Heavy-duty ball Con Rod: needle roller
Piston Rings	2 cast iron taper face compression rings	2 cast iron taper face compression rings	2 cast iron compression rings
Carburettor	Diaphragm type with choke. Fully enclosed, external adjustments	Diaphragm type with choke. Fully enclosed, external adjustments	Diaphragm type with choke. Fully enclosed internal adjustments
Filtering System	Felt fuel filter; rubber edged flocked screen air filter	Felt fuel filter; felt air filter	Felt fuel filter; rubber edged flocked air filter
Fuel-Oil Mixture	Standard petrol mixed 40:1 with McCulloch Oil	Standard petrol mixed 40:1 with McCulloch Oil	Standard petrol mixed 40:1 with McCulloch Oil
Fuel Tank Capacity	.61 pints (.345 L)	.45 pints (.256 L)	1.2 pints (.710 L)
Intake Valve	3rd port, piston timed	3rd port, piston timed	3rd port, piston timed
Clutch	Automatic centrifugal	Automatic centrifugal	Automatic centrifugal
Clutch Engaging Speed	2,600 RPM	2,600 RPM	3,000 RPM
Chain Oiler Capacity	.17 pints (.10 L)	.16 pints (.09 L)	.5 pints (.284 L)
Ignition	McCulloch waterproof high tension magneto	McCulloch waterproof high tension magneto	McCulloch waterproof high tension magneto
Breaker Point Gap	.018" (.5 mm)	.018" (.5 mm)	.019"-.020" (.5 mm)
Coil Location	Outside flywheel, fan cooled	Outside flywheel, fan cooled	Outside flywheel, fan cooled
Timing	26° BTC	26° BTC	26° BTC
Spark Plug	AC-CS 45T (miniaturized) Gap .025" (.63 mm)	AC-CS 45T (miniaturized) Gap .025" (.63 mm)	Champion CJ8 Gap .025" (.63 mm)
Chain	McCulloch PM250 .050" gauge (1.25 mm)	McCulloch PM250 .050" gauge (1.25 mm)	McCulloch PM358 .058" gauge (1.47 mm)
Sprocket	8 tooth .25" pitch (6.25 mm)	8 tooth .25" pitch (6.25 mm) rim type	7 tooth .354" pitch (9.12 mm) rim type

 **McCulloch** McCulloch of Australia Pty. Ltd., 110-112 Station Road, Seven Hills 2147.