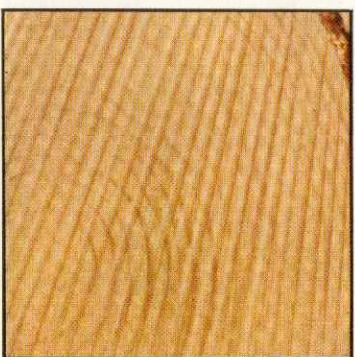
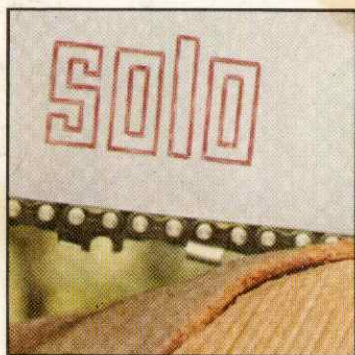


SOLO



**POWER
CHAIN SAWS**

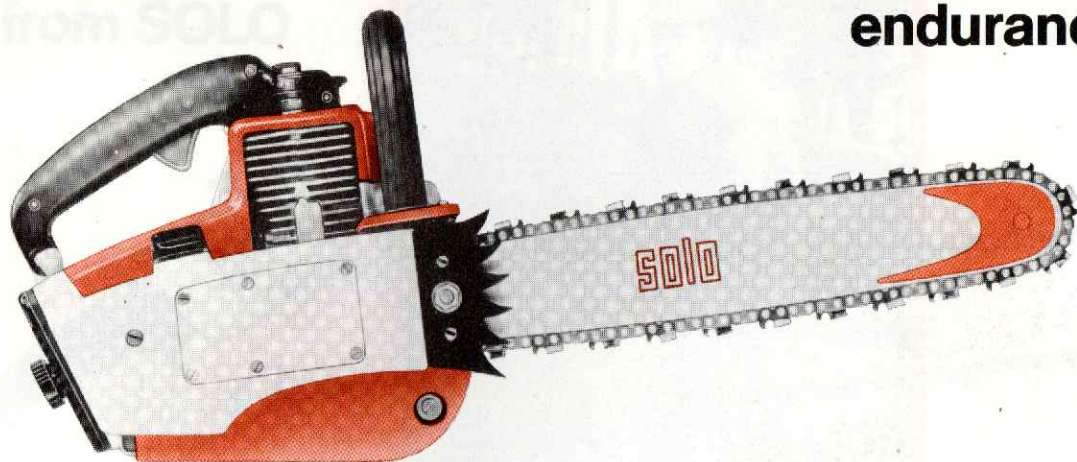


solo



**A midget in size – a brute for performance,
endurance**

**SOLO
610^V_A**



3 hp

Specifications:

Displacement:	35 cc.
Power (SAE):	3 hp
Cylinder:	die-cast aluminum with steel sleeve
Carburetor:	Tillotson HU 11 A
Air Filter:	new 14 sq. in./90 qcm felt screen with rubber rim; cleanse in gasoline
Fuel Tank:	1 pint/.54 l, HD plastic
Oil Reservoir:	1/2 pint/.25 l
Chain Oiler:	fully automatic, gear-activated piston pump inside chain guard; adjustable
Saw Chains:	SOLO-315 or SOLO-616 (.315" or 1/4" pitch)
Guide Bar:	14"/35 cm
Sprockets:	spur-type, 7-tooth
Weight:	10,5 lbs/4,7 kg

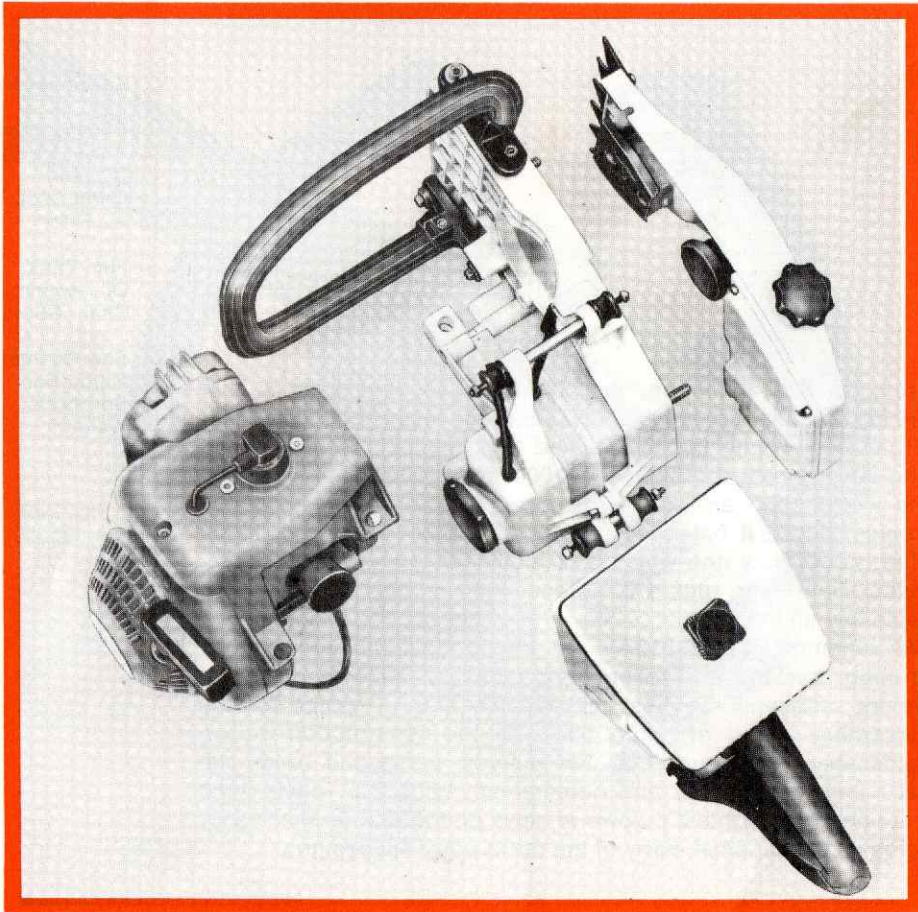
From its first inception, the SOLO-610 AV has been a surprising combination of big-saw features in a "mini" package. Organized around the time-tested SOLO 3-hp, 35-cc. "Junior" engine of which more than 100,000 are in steady use around the world. With an extra-large cooling system for use in the tropics, but well balanced for Arctic winter use. Over-size air filter, heavy-duty anti-vibe shock blocks on both handles, automatic chain oiler, plus a large cast-alloy muffler that keeps its voice low all the time.

We recommend the 610 AV for all light to medium cutting, pruning, bucking and felling operations. Its perfect power-to-weight ratio and low cost make it the natural choice for the discerning casual or hobby user, for the construction trades, landscapers, tree surgeons, the utilities, parks and roads departments, orchardists and nurserymen. With .315"-pitch chain it is one of the lightest pulpwood saws on the market that easily holds its own against many of the more powerful designs.

solo

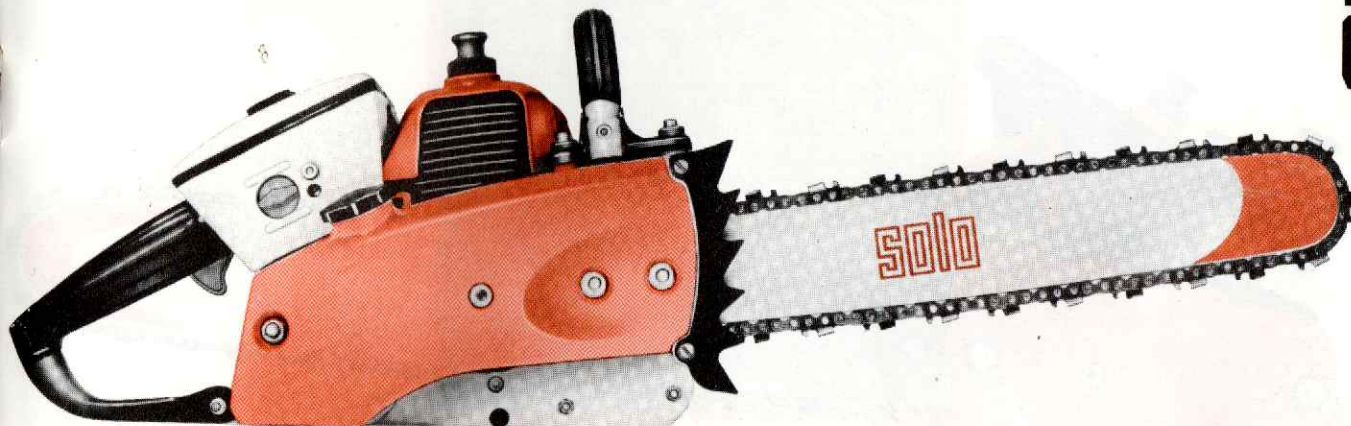


Faster maintenance at lower cost — thanks to SOLO's revolutionary new modular design concept. All components are easily accessible for service or replacement. Remove complete modules or if you wish, service like other saws.



The all-around production chain saws from SOLO

SOLO 650A



The modular concept of chain saw engineering was born with this outstanding SOLO model. Its immediate success in the market place and the steady strong demand in all timber-producing areas, are ample proof for the soundness of our idea: make the best chain saw that modern design practices permit, then break it down into functionally separated component groups, or modules, which are easily serviced or replaced. The result for the SOLO customer: faster maintenance at lower cost. Both handles mounted in big safety rubber shocks. Large 23 sq. in. air filter. Fully automatic chain lubrication system inside chain guard for easy maintenance. Heavy-duty recoil starter, cooling system dimensioned for all climatic conditions, large cast-alloy muffler, seamless translucent fuel tank of topgrade heat-insulating plastic.

6 hp

Specifications:	650 AV
Displacement:	62 cc.
Power (SAE):	6 hp
Cylinders:	hard-chromed walls in die-cast aluminum
Carburetor:	Tillotson all-position diaphragm
Air Filter:	23 sq. in./150 qcm felt screen with rubber rim; cleanse in gasoline
Fuel Tank:	1½ pints/.65 l, HD plastic
Oil Reservoir:	¾ pint/.3 l
Chain Oiler:	fully automatic, gear-activated piston pump inside chain guard
Saw chain:	SOLO-638 (¾" pitch, .050" gauge)
Guide Bars:	16"/40 cm or 20"/50 cm
Sprockets:	spur-type, 7-tooth
Weight, net:	15½ lbs/7 kg

SOLO 660X

The biggest of the lightweights – or the smallest of the giants



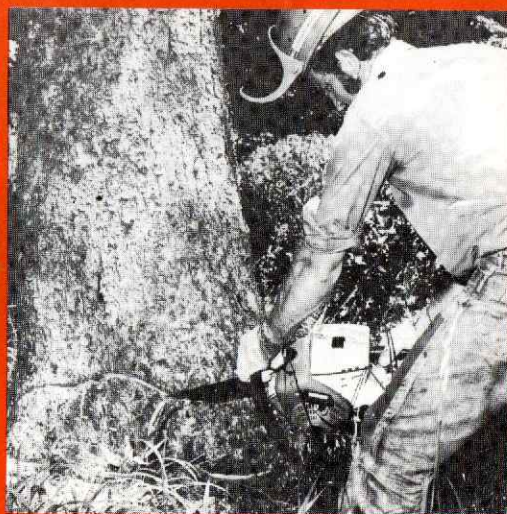
For all types of wood, including tropical hardwoods and even some of the heavier species with extra stringy fibres, the new 660AV offers all its wieldy, versatile power in an amazingly lightweight package.

Basically it is our well-proven modular frame design as used on the 650AV model, but fitted with a bigger power plant and heavier by just a few ounces. Again, individual modules (frame with tank and handlebar; pistol grip and carburetor group; engine with starter and muffler; chain guard with chain oiling system) may be removed for maintenance or exchange, or the entire unit may be serviced in conventional fashion.

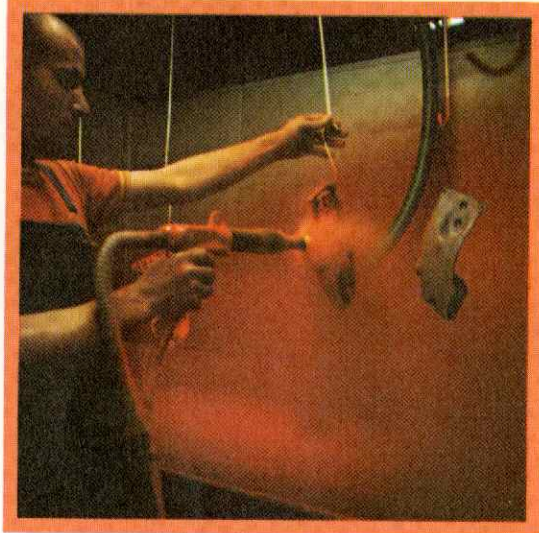
7 hp

Specifications:

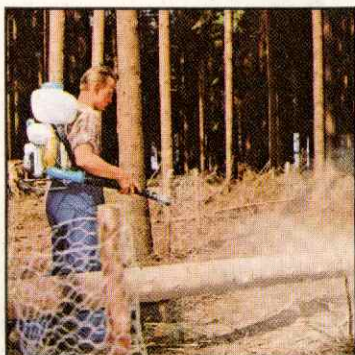
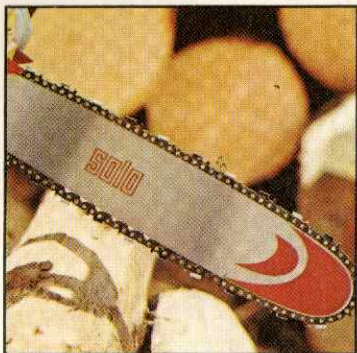
Displacement:	81 cc.
Power (SAE):	7 hp
Cylinder:	die-cast aluminum with hard-chromed walls
Carburetor:	Tillotson HS 126 A
Air Filter:	new felt-screen with rubber rim; cleanse in gasoline
Fuel Tank:	1½ pints/.65 l, HD plastic
Oil Reservoir:	¾ pint/.3 l
Chain Oiler:	fully automatic, adjustable; gear-activated piston pump inside chain guard
Saw chain:	SOLO-638 (¾" pitch, .050" gauge)
Guide Bars:	20"/50 cm or 24"/60 cm
Sprockets:	spur-type, 7-tooth
Weight, net:	16½ lbs/7,5 kg



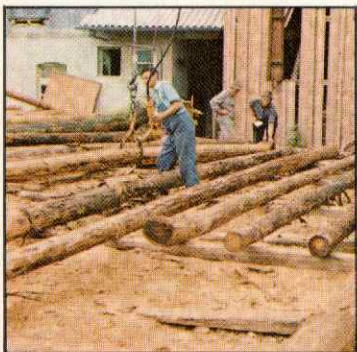
SOLO



Some 1,500,000 SOLO engines ago we started, learning all about modern two-cycle design. We have pioneered many innovations since, and we are sometimes copied by others. The experience we have gathered in these years did not come easy or cheap. But it comes to you at no extra charge as an invisible bonus with every SOLO chain saw or power unit.

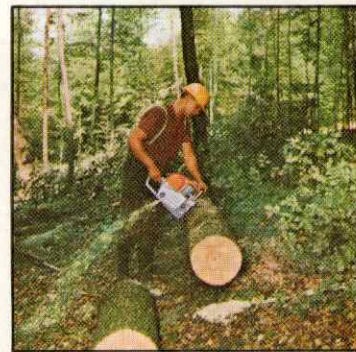


SOLO's contributions in the field of plant protection equipment design are internationally recognized. The tunnel spray guard used in conjunction with a SOLO JETPAK-425 manual knapsack sprayer permits safe application of herbicides around saplings in a forest tree nursery. — Ask for our special folder.



SOLO portable high-concentrate mist blowers were the first ones ever made. After twenty years and in the face of international competition, SOLO has remained the No. 1 name in quality and quantity world-wide. Mist blowers are the ideal applicators for insecticides and fungicides. Ask for our special folders.

SOLO



SOLO Kleinmotoren GmbH

D-7032 Sindelfingen 6, Box 20 (W. Germany)

Frank M. Winstone (Merchants) Ltd.

71-77 Customs Street East
Auckland, 1 — New Zealand
C.P.O. Box 2195
Telephone 33-409, Telegrams "Fleetwing"